

***THE PROVINCE OF  
GAUTENG***



***DIE PROVINSIE VAN  
GAUTENG***

# **Provincial Gazette Provinsiale Koerant**

**EXTRAORDINARY • BUITENGEWOON**

Selling price • Verkoopprys: **R2.50**  
Other countries • Buitelands: **R3.25**

**Vol. 23**

**PRETORIA**  
17 OCTOBER 2017  
17 OKTOBER 2017

**No. 257**

**We all have the power to prevent AIDS**



**Prevention is the cure**

**AIDS  
HELPLINE**

**0800 012 322**

DEPARTMENT OF HEALTH

**N.B. The Government Printing Works will not be held responsible for the quality of "Hard Copies" or "Electronic Files" submitted for publication purposes**

ISSN 1682-4525



9 771682 452005

00257



**IMPORTANT NOTICE:**

THE GOVERNMENT PRINTING WORKS WILL NOT BE HELD RESPONSIBLE FOR ANY ERRORS THAT MIGHT OCCUR DUE TO THE SUBMISSION OF INCOMPLETE / INCORRECT / ILLEGIBLE COPY.

**No** FUTURE QUERIES WILL BE HANDLED IN CONNECTION WITH THE ABOVE.

**CONTENTS**

*Gazette*    *Page*  
*No.*        *No.*

**PROCLAMATION • PROKLAMASIE**

155	Gauteng Transport Infrastructure Act, 2001: Gautrain Rapid Rail Link: Proclamation of the increase in width of portions of the railway line for the Gautrain Rapid Rail Link in the Muckleneuk area: District Pretoria .....	257	3
-----	--	-----	---

---

**PROCLAMATION • PROKLAMASIE**

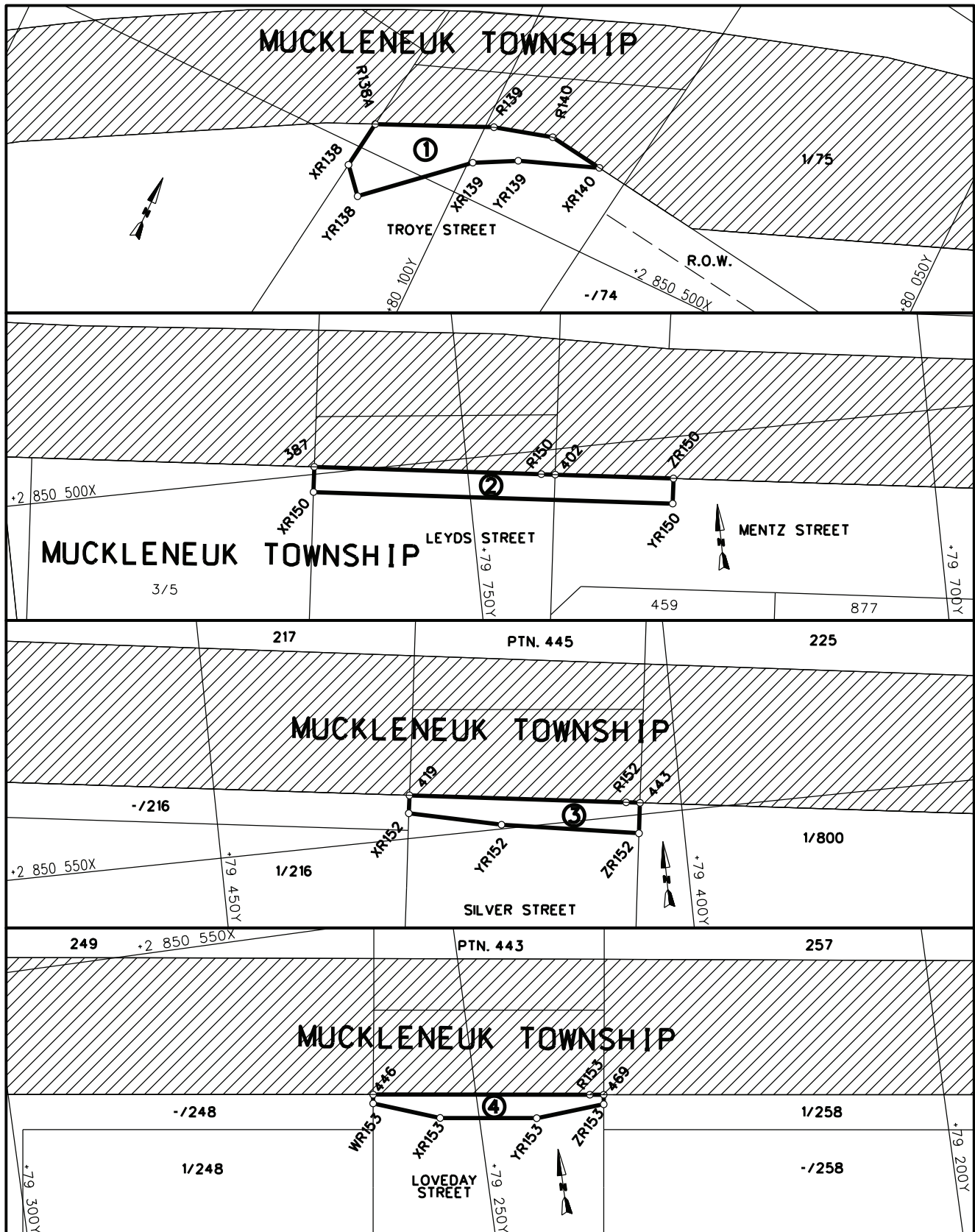
---

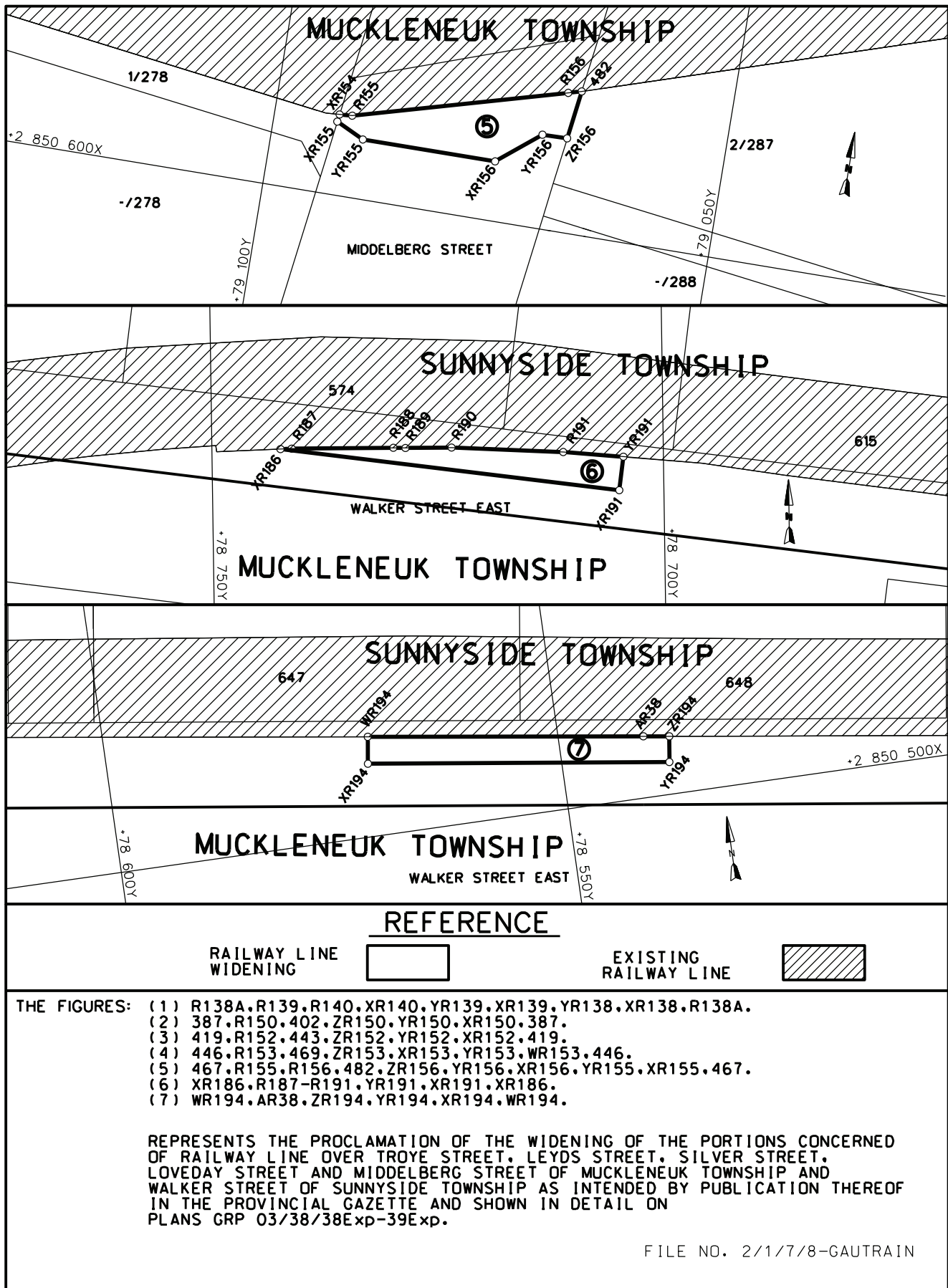
**PROCLAMATION 155 OF 2017****GAUTRAIN RAPID RAIL LINK: PROCLAMATION OF THE INCREASE IN WIDTH OF PORTIONS OF THE RAILWAY LINE FOR THE GAUTRAIN RAPID RAIL LINK IN THE MUCKLENEUK AREA: DISTRICT PRETORIA**

In terms of section 11(2) of the Gauteng Transport Infrastructure Act, 2001, the MEC responsible for provincial roads and railway lines in Gauteng, hereby proclaims the increase in width of the Gautrain Rapid Rail link rail reserve over the land as described and indicated by the figures on the accompanying sketch plans.

In terms of section 23 (6) of the abovementioned Act it is hereby stated that plans GRP03/38/37 Exp – 40 which indicated the land affected by the provincial railway line in detail, are available for inspection at the plan room, Department of Roads and Transport, 41 Simmond Street, First floor, Sage Life Building, Johannesburg during office hours.

**Reference number: 2/1/7/1 Muckleneuk  
MEC Resolution 006 dated 6 September 2017**





CO-ORDINATE LIST WG 29°			CONST. Y= 35/64 0.00 X= +2 000 000.00					
AR38	+78 540.626	+850 493.216	R153	+79 237.835	+850 571.551	R189	+78 728.558	+850 469.075
R138A	+80 110.833	+850 497.070	WR153	+79 261.173	+850 569.317	R190	+78 723.449	+850 469.101
XR138	+80 111.543	+850 502.278	XR153	+79 254.221	+850 571.847	R191	+78 711.092	+850 469.777
YR138	+80 109.197	+850 504.906	YR153	+79 243.907	+850 573.278	XR191	+78 705.175	+850 474.095
R139	+80 099.131	+850 491.853	ZR153	+79 236.541	+850 572.774	YR191	+78 704.671	+850 470.387
XR139	+80 099.543	+850 496.291	XR154	+79 092.924	+850 591.090	WR194	+78 570.978	+850 488.968
YR139	+80 095.214	+850 493.993	R155	+79 091.452	+850 590.992	XR194	+78 571.381	+850 491.915
R140	+80 092.948	+850 490.091	XR155	+79 093.042	+850 591.914	YR194	+78 538.290	+850 496.445
XR140	+80 086.993	+850 490.906	YR155	+79 090.409	+850 593.411	ZR194	+78 537.904	+850 493.623
R150	+79 742.120	+850 502.522	R156	+79 068.254	+850 584.594			
XR150	+79 766.737	+850 501.896	XR156	+79 075.085	+850 593.408	387	+79 766.369	+850 499.203
YR150	+79 728.335	+850 507.153	YR156	+79 070.383	+850 589.637	419	+79 429.112	+850 545.369
ZR150	+79 727.967	+850 504.460	ZR156	+79 067.622	+850 589.592	443	+79 404.472	+850 548.741
R152	+79 405.930	+850 548.542	XR186	+78 742.643	+850 469.004	446	+79 261.040	+850 568.373
XR152	+79 429.382	+850 547.283	R187	+78 741.156	+850 468.968	469	+79 236.401	+850 571.748
YR152	+79 420.520	+850 549.389	R188	+78 729.885	+850 469.037	482	+79 066.879	+850 584.172
ZR152	+79 404.919	+850 552.001						



Printed by the Government Printer, Bosman Street, Private Bag X85, Pretoria, 0001,  
for the **Gauteng Provincial Administration**, Johannesburg.

Contact Centre Tel: 012-748 6200. eMail: [info.egazette@gpw.gov.za](mailto:info.egazette@gpw.gov.za)  
Publications: Tel: (012) 748 6053, 748 6061, 748 6065