



THE PROVINCE OF MPUMALANGA
DIE PROVINSIE MPUMALANGA

Provincial Gazette Provinsiale Koerant

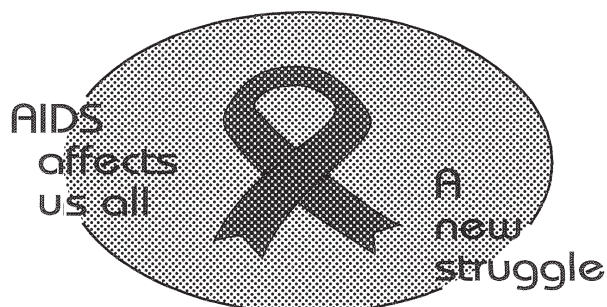
(Registered as a newspaper) • (As 'n nuusblad geregistreer)

Vol. 27

NELSPRUIT
13 MARCH 2020
13 MAART 2020

No. 3141

We all have the power to prevent AIDS



Prevention is the cure

**AIDS
HELPLINE**

0800 012 322

DEPARTMENT OF HEALTH

N.B. The Government Printing Works will not be held responsible for the quality of "Hard Copies" or "Electronic Files" submitted for publication purposes

ISSN 1682-4518



03141



IMPORTANT NOTICE OF OFFICE RELOCATION**government
printing**Department:
Government Printing Works
REPUBLIC OF SOUTH AFRICAPrivate Bag X85, PRETORIA, 0001 149 Bosman Street, PRETORIA
Tel: 012 748 6197, Website: www.gpwonline.co.za**URGENT NOTICE TO OUR VALUED CUSTOMERS: PUBLICATIONS
OFFICE'S RELOCATION HAS BEEN TEMPORARILY SUSPENDED.**

Please be advised that the GPW Publications office will no longer move to 88 Visagie Street as indicated in the previous notices.

The move has been suspended due to the fact that the new building in 88 Visagie Street is not ready for occupation yet.

We will later on issue another notice informing you of the new date of relocation.

We are doing everything possible to ensure that our service to you is not disrupted.

As things stand, we will continue providing you with our normal service from the current location at 196 Paul Kruger Street, Masada building.

Customers who seek further information and or have any questions or concerns are free to contact us through telephone 012 748 6066 or email Ms Maureen Toka at Maureen.Toka@gpw.gov.za or cell phone at 082 859 4910.

Please note that you will still be able to download gazettes free of charge from our website www.gpwonline.co.za.

We apologise for any inconvenience this might have caused.

Issued by GPW Communications

IMPORTANT NOTICE:

THE GOVERNMENT PRINTING WORKS WILL NOT BE HELD RESPONSIBLE FOR ANY ERRORS THAT MIGHT OCCUR DUE TO THE SUBMISSION OF INCOMPLETE / INCORRECT / ILLEGIBLE COPY.

No FUTURE QUERIES WILL BE HANDLED IN CONNECTION WITH THE ABOVE.

CONTENTS

Gazette *Page*
No. *No.*

GENERAL NOTICES • ALGEMENE KENNISGEWINGS

14	Spatial Planning and Land use Management Act of 2013 (SPLUMA): Compilation of an all-inclusive Land Use Management Scheme (LUMS) for the Dipaleseng Municipality.....	3141	14
14	Wet op Ruimtelike Beplanning en Grondgebruikbestuur van 2013 (SPLUMA): Samestelling van 'n alle Inklusiewe Grondgebruikbestuurskema (LUMS) vir die Dipaleseng Munisipaliteit.....	3141	14

PROCLAMATION • PROKLAMASIE

17	Town Planning and Townships Ordinance, 1986 (Ordinance 15 of 1986): Piet Retief Extension 23.....	3141	15
18	Town-planning and Townships Ordinance (15/1986): Thandekile Extension 4.....	3141	18
19	Town-planning and Townships Ordinance (15/1986): Thandekile Extension 3.....	3141	22
20	Emalahleni Spatial Planning and Land Use Management By-Law, 2016: Erf 573, Emalahleni Extension 3	3141	24

PROVINCIAL NOTICES • PROVINSIALE KENNISGEWINGS

41	Mbombela By-Law on Spatial Planning and Land Use Management By-Law, 2015: Rezoning Erf 2579, Nelspruit Extension 14 Township	3141	25
41	Mbombela By-Wet op Ruimtelike Beplanning en Grondgebruiksbeheer, 2015: Hersonerig van Erf 2579, Nelspruit-uitbreiding 10-dorpsgebied.....	3141	26
44	Steve Tshwete Spatial Planning and Land Use Management By-law, 2016: Portion 19 of Erf 1102, Middelburg.....	3141	27
44	Steve Tshwete Ruimtelike Beplanning en Grondgebruiksbestuursverordening, 2016: Gedeelte 19 van Erf 1102, Middelburg.....	3141	27
45	Steve Tshwete Spatial Planning and Land Use Management Bylaw, 2016: Rezoning of Portion 1 of Erf 76, Middelburg.....	3141	28
45	Steve Tshwete Ruimtelike Beplanning en Grondgebruiksbestuursverordening, 2016: Hersonerig van Gedeelte 1 van Erf 76, Middelburg.....	3141	28
46	Roads Ordinance (22/1957): Deviation, declaration and closure of Provincial Road D253	3141	29
47	Mpumalanga Gambling Act (5/1995), as amended: Application for Site Operator Licence: Various applications.....	3141	31

LOCAL AUTHORITY NOTICES • PLAASLIKE OWERHEIDS KENNISGEWINGS

14	Msukaligwa Local Municipality Spatial Planning and Land Use Management By-law, 2016: Erf2973, Kwazanele Extension 6	3141	32
14	Msukaligwa Plaaslike Munisipaliteit se Ruimtelike Beplanning en Grondgebruiksbestuur By-wet, 2016: Erf 2973, Kwazanele Uitbreiding 6.....	3141	32



government
printing

Department:
Government Printing Works
REPUBLIC OF SOUTH AFRICA

HIGH ALERT: SCAM WARNING!!!

TO ALL SUPPLIERS AND SERVICE PROVIDERS OF THE GOVERNMENT PRINTING WORKS

It has come to the attention of the *GOVERNMENT PRINTING WORKS* that there are certain unscrupulous companies and individuals who are defrauding unsuspecting businesses disguised as representatives of the *Government Printing Works (GPW)*.

The scam involves the fraudsters using the letterhead of *GPW* to send out fake tender bids to companies and requests to supply equipment and goods.

Although the contact person's name on the letter may be of an existing official, the contact details on the letter are not the same as the *Government Printing Works*. When searching on the Internet for the address of the company that has sent the fake tender document, the address does not exist.

The banking details are in a private name and not company name. Government will never ask you to deposit any funds for any business transaction. *GPW* has alerted the relevant law enforcement authorities to investigate this scam to protect legitimate businesses as well as the name of the organisation.

Example of e-mails these fraudsters are using:

PROCUREMENT@GPW-GOV.ORG

Should you suspect that you are a victim of a scam, you must urgently contact the police and inform the *GPW*.

GPW has an official email with the domain as @gpw.gov.za

Government e-mails DO NOT have org in their e-mail addresses. All of these fraudsters also use the same or very similar telephone numbers. Although such number with an area code 012 looks like a landline, it is not fixed to any property.

GPW will never send you an e-mail asking you to supply equipment and goods without a purchase/order number. *GPW* does not procure goods for another level of Government. The organisation will not be liable for actions that result in companies or individuals being resultant victims of such a scam.

Government Printing Works gives businesses the opportunity to supply goods and services through RFQ / Tendering process. In order to be eligible to bid to provide goods and services, suppliers must be registered on the National Treasury's Central Supplier Database (CSD). To be registered, they must meet all current legislative requirements (e.g. have a valid tax clearance certificate and be in good standing with the South African Revenue Services - SARS).

The tender process is managed through the Supply Chain Management (SCM) system of the department. SCM is highly regulated to minimise the risk of fraud, and to meet objectives which include value for money, open and effective competition, equitability, accountability, fair dealing, transparency and an ethical approach. Relevant legislation, regulations, policies, guidelines and instructions can be found on the tender's website.

Fake Tenders

National Treasury's CSD has launched the Government Order Scam campaign to combat fraudulent requests for quotes (RFQs). Such fraudulent requests have resulted in innocent companies losing money. We work hard at preventing and fighting fraud, but criminal activity is always a risk.

How tender scams work

There are many types of tender scams. Here are some of the more frequent scenarios:

Fraudsters use what appears to be government department stationery with fictitious logos and contact details to send a fake RFQ to a company to invite it to urgently supply goods. Shortly after the company has submitted its quote, it receives notification that it has won the tender. The company delivers the goods to someone who poses as an official or at a fake site. The Department has no idea of this transaction made in its name. The company is then never paid and suffers a loss.

OR

Fraudsters use what appears to be government department stationery with fictitious logos and contact details to send a fake RFQ to Company A to invite it to urgently supply goods. Typically, the tender specification is so unique that only Company B (a fictitious company created by the fraudster) can supply the goods in question.

Shortly after Company A has submitted its quote it receives notification that it has won the tender. Company A orders the goods and pays a deposit to the fictitious Company B. Once Company B receives the money, it disappears. Company A's money is stolen in the process.

Protect yourself from being scammed

- If you are registered on the supplier databases and you receive a request to tender or quote that seems to be from a government department, contact the department to confirm that the request is legitimate. Do not use the contact details on the tender document as these might be fraudulent.
- Compare tender details with those that appear in the Tender Bulletin, available online at www.gpwonline.co.za
- Make sure you familiarise yourself with how government procures goods and services. Visit the tender website for more information on how to tender.
- If you are uncomfortable about the request received, consider visiting the government department and/or the place of delivery and/or the service provider from whom you will be sourcing the goods.
- In the unlikely event that you are asked for a deposit to make a bid, contact the SCM unit of the department in question to ask whether this is in fact correct.

Any incidents of corruption, fraud, theft and misuse of government property in the *Government Printing Works* can be reported to:

Supply Chain Management: Ms. Anna Marie Du Toit, Tel. (012) 748 6292.
Email: Annamarie.DuToit@gpw.gov.za

Marketing and Stakeholder Relations: Ms Bonakele Mbhele, at Tel. (012) 748 6193.
Email: Bonakele.Mbhele@gpw.gov.za

Security Services: Mr Daniel Legoabe, at tel. (012) 748 6176.
Email: Daniel.Legoabe@gpw.gov.za

Closing times for **ORDINARY WEEKLY** 2020

MPUMALANGA PROVINCIAL GAZETTE

*The closing time is **15:00** sharp on the following days:*

- **24 December 2019**, Tuesday for the issue of Friday **03 January 2020**
- **03 January**, Friday for the issue of Friday **10 January 2020**
- **10 January**, Friday for the issue of Friday **17 January 2020**
- **17 January**, Friday for the issue of Friday **24 January 2020**
- **24 January**, Friday for the issue of Friday **31 January 2020**
- **31 January**, Friday for the issue of Friday **07 February 2020**
- **07 February**, Friday for the issue of Friday **14 February 2020**
- **14 February**, Friday for the issue of Friday **21 February 2020**
- **21 February**, Friday for the issue of Friday **28 February 2020**
- **28 February**, Friday for the issue of Friday **06 March 2020**
- **06 March**, Friday for the issue of Friday **13 March 2020**
- **13 March**, Friday for the issue of Friday **20 March 2020**
- **20 March**, Friday for the issue of Friday **27 March 2020**
- **27 March**, Friday for the issue of Friday **03 April 2020**
- **03 April**, Friday for the issue of Friday **10 April 2020**
- **08 April**, Friday for the issue of Friday **17 April 2020**
- **17 April**, Friday for the issue of Friday **24 April 2020**
- **23 April**, Thursday for the issue of Friday **01 May 2020**
- **30 April**, Friday for the issue of Friday **08 May 2020**
- **08 May**, Friday for the issue of Friday **15 May 2020**
- **15 May**, Friday for the issue of Friday **22 May 2020**
- **22 May**, Friday for the issue of Friday **29 May 2020**
- **29 May**, Friday for the issue of Friday **05 June 2020**
- **05 June**, Friday for the issue of Friday **12 June 2020**
- **11 June**, Thursday for the issue of Friday **19 June 2020**
- **19 June**, Friday for the issue of Friday **26 June 2020**
- **26 June**, Friday for the issue of Friday **03 July 2020**
- **03 July**, Friday for the issue of Friday **10 July 2020**
- **10 July**, Friday for the issue of Friday **17 July 2020**
- **17 July**, Friday for the issue of Friday **24 July 2020**
- **24 July**, Friday for the issue of Friday **31 July 2020**
- **31 July**, Friday for the issue of Friday **07 August 2020**
- **06 August**, Thursday for the issue of Friday **14 August 2020**
- **14 August**, Friday for the issue of Friday **21 August 2020**
- **21 August**, Friday for the issue of Friday **28 August 2020**
- **28 August**, Friday for the issue of Friday **04 September 2020**
- **04 September**, Friday for the issue of Friday **11 September 2020**
- **11 September**, Friday for the issue of Friday **18 September 2020**
- **17 September**, Thursday for the issue of Friday **25 September 2020**
- **25 September**, Friday for the issue of Friday **02 October 2020**
- **02 October**, Friday for the issue of Friday **09 October 2020**
- **09 October**, Friday for the issue of Friday **16 October 2020**
- **16 October**, Friday for the issue of Friday **23 October 2020**
- **23 October**, Friday for the issue of Friday **30 October 2020**
- **30 October**, Friday for the issue of Friday **06 November 2020**
- **06 November**, Friday for the issue of Friday **13 November 2020**
- **13 November**, Friday for the issue of Friday **20 November 2020**
- **20 November**, Friday for the issue of Friday **27 November 2020**
- **27 November**, Friday for the issue of Friday **04 December 2020**
- **04 December**, Friday for the issue of Friday **11 December 2020**
- **10 December**, Thursday for the issue of Friday **18 December 2020**
- **18 December**, Friday for the issue of Friday **25 December 2020**
- **23 December**, Wednesday for the issue of Friday **01 January 2021**

LIST OF TARIFF RATES

FOR PUBLICATION OF NOTICES

COMMENCEMENT: 1 APRIL 2018

NATIONAL AND PROVINCIAL

Notice sizes for National, Provincial & Tender gazettes 1/4, 2/4, 3/4, 4/4 per page. Notices submitted will be charged at R1008.80 per full page, pro-rated based on the above categories.

Pricing for National, Provincial - Variable Priced Notices		
Notice Type	Page Space	New Price (R)
Ordinary National, Provincial	1/4 - Quarter Page	252.20
Ordinary National, Provincial	2/4 - Half Page	504.40
Ordinary National, Provincial	3/4 - Three Quarter Page	756.60
Ordinary National, Provincial	4/4 - Full Page	1008.80

EXTRA-ORDINARY

All Extra-ordinary National and Provincial gazette notices are non-standard notices and attract a variable price based on the number of pages submitted.

The pricing structure for National and Provincial notices which are submitted as **Extra ordinary submissions** will be charged at **R3026.32** per page.

GOVERNMENT PRINTING WORKS - BUSINESS RULES

The **Government Printing Works (GPW)** has established rules for submitting notices in line with its electronic notice processing system, which requires the use of electronic *Adobe Forms*. Please ensure that you adhere to these guidelines when completing and submitting your notice submission.

CLOSING TIMES FOR ACCEPTANCE OF NOTICES

1. The *Government Gazette* and *Government Tender Bulletin* are weekly publications that are published on Fridays and the closing time for the acceptance of notices is strictly applied according to the scheduled time for each gazette.
2. Please refer to the Submission Notice Deadline schedule in the table below. This schedule is also published online on the Government Printing works website www.gpwnonline.co.za

All re-submissions will be subject to the standard cut-off times.

All notices received after the closing time will be rejected.

Government Gazette Type	Publication Frequency	Publication Date	Submission Deadline	Cancellations Deadline
National Gazette	Weekly	Friday	Friday 15h00 for next Friday	Tuesday, 15h00 - 3 working days prior to publication
Regulation Gazette	Weekly	Friday	Friday 15h00 for next Friday	Tuesday, 15h00 - 3 working days prior to publication
Petrol Price Gazette	Monthly	Tuesday before 1st Wednesday of the month	One day before publication	1 working day prior to publication
Road Carrier Permits	Weekly	Friday	Thursday 15h00 for next Friday	3 working days prior to publication
Unclaimed Monies (Justice, Labour or Lawyers)	January / September 2 per year	Last Friday	One week before publication	3 working days prior to publication
Parliament (Acts, White Paper, Green Paper)	As required	Any day of the week	None	3 working days prior to publication
Manuals	Bi- Monthly	2nd and last Thursday of the month	One week before publication	3 working days prior to publication
State of Budget (National Treasury)	Monthly	30th or last Friday of the month	One week before publication	3 working days prior to publication
<i>Extraordinary Gazettes</i>	As required	Any day of the week	<i>Before 10h00 on publication date</i>	<i>Before 10h00 on publication date</i>
Legal Gazettes A, B and C	Weekly	Friday	One week before publication	Tuesday, 15h00 - 3 working days prior to publication
Tender Bulletin	Weekly	Friday	Friday 15h00 for next Friday	Tuesday, 15h00 - 3 working days prior to publication
Gauteng	Weekly	Wednesday	Two weeks before publication	3 days after submission deadline
Eastern Cape	Weekly	Monday	One week before publication	3 working days prior to publication
Northern Cape	Weekly	Monday	One week before publication	3 working days prior to publication
North West	Weekly	Tuesday	One week before publication	3 working days prior to publication
KwaZulu-Natal	Weekly	Thursday	One week before publication	3 working days prior to publication
Limpopo	Weekly	Friday	One week before publication	3 working days prior to publication
Mpumalanga	Weekly	Friday	One week before publication	3 working days prior to publication

GOVERNMENT PRINTING WORKS - BUSINESS RULES

Government Gazette Type	Publication Frequency	Publication Date	Submission Deadline	Cancellations Deadline
Gauteng Liquor License Gazette	Monthly	Wednesday before the First Friday of the month	Two weeks before publication	3 working days after submission deadline
Northern Cape Liquor License Gazette	Monthly	First Friday of the month	Two weeks before publication	3 working days after submission deadline
National Liquor License Gazette	Monthly	First Friday of the month	Two weeks before publication	3 working days after submission deadline
Mpumalanga Liquor License Gazette	Bi-Monthly	Second & Fourth Friday	One week before publication	3 working days prior to publication

EXTRAORDINARY GAZETTES

3. *Extraordinary Gazettes* can have only one publication date. If multiple publications of an *Extraordinary Gazette* are required, a separate Z95/Z95Prov *Adobe* Forms for each publication date must be submitted.

NOTICE SUBMISSION PROCESS

4. Download the latest *Adobe* form, for the relevant notice to be placed, from the **Government Printing Works** website www.gpwonline.co.za.
5. The *Adobe* form needs to be completed electronically using *Adobe Acrobat / Acrobat Reader*. Only electronically completed *Adobe* forms will be accepted. No printed, handwritten and/or scanned *Adobe* forms will be accepted.
6. The completed electronic *Adobe* form has to be submitted via email to submit.egazette@gpw.gov.za. The form needs to be submitted in its original electronic *Adobe* format to enable the system to extract the completed information from the form for placement in the publication.
7. Every notice submitted **must** be accompanied by an official **GPW** quotation. This must be obtained from the *eGazette* Contact Centre.
8. Each notice submission should be sent as a single email. The email **must** contain **all documentation relating to a particular notice submission**.
 - 8.1. Each of the following documents must be attached to the email as a separate attachment:
 - 8.1.1. An electronically completed *Adobe* form, specific to the type of notice that is to be placed.
 - 8.1.1.1. For National *Government Gazette* or *Provincial Gazette* notices, the notices must be accompanied by an electronic Z95 or Z95Prov *Adobe* form
 - 8.1.1.2. The notice content (body copy) **MUST** be a separate attachment.
 - 8.1.2. A copy of the official **Government Printing Works** quotation you received for your notice. (*Please see Quotation section below for further details*)
 - 8.1.3. A valid and legible Proof of Payment / Purchase Order: **Government Printing Works** account customer must include a copy of their Purchase Order. **Non-Government Printing Works** account customer needs to submit the proof of payment for the notice
 - 8.1.4. Where separate notice content is applicable (Z95, Z95 Prov and TForm 3, it should **also** be attached as a separate attachment. (*Please see the Copy Section below, for the specifications*).
 - 8.1.5. Any additional notice information if applicable.

GOVERNMENT PRINTING WORKS - BUSINESS RULES

9. The electronic *Adobe* form will be taken as the primary source for the notice information to be published. Instructions that are on the email body or covering letter that contradicts the notice form content will not be considered. The information submitted on the electronic *Adobe* form will be published as-is.
10. To avoid duplicated publication of the same notice and double billing, Please submit your notice **ONLY ONCE**.
11. Notices brought to **GPW** by “walk-in” customers on electronic media can only be submitted in *Adobe* electronic form format. All “walk-in” customers with notices that are not on electronic *Adobe* forms will be routed to the Contact Centre where they will be assisted to complete the forms in the required format.
12. Should a customer submit a bulk submission of hard copy notices delivered by a messenger on behalf of any organisation e.g. newspaper publisher, the messenger will be referred back to the sender as the submission does not adhere to the submission rules.

QUOTATIONS

13. Quotations are valid until the next tariff change.
 - 13.1. **Take note:** **GPW**'s annual tariff increase takes place on **1 April** therefore any quotations issued, accepted and submitted for publication up to **31 March** will keep the old tariff. For notices to be published from 1 April, a quotation must be obtained from **GPW** with the new tariffs. Where a tariff increase is implemented during the year, **GPW** endeavours to provide customers with 30 days' notice of such changes.
14. Each quotation has a unique number.
15. Form Content notices must be emailed to the e*Gazette* Contact Centre for a quotation.
 - 15.1. The *Adobe* form supplied is uploaded by the Contact Centre Agent and the system automatically calculates the cost of your notice based on the layout/format of the content supplied.
 - 15.2. It is critical that these *Adobe* Forms are completed correctly and adhere to the guidelines as stipulated by **GPW**.
16. **APPLICABLE ONLY TO GPW ACCOUNT HOLDERS:**
 - 16.1. **GPW** Account Customers must provide a valid **GPW** account number to obtain a quotation.
 - 16.2. Accounts for **GPW** account customers **must** be active with sufficient credit to transact with **GPW** to submit notices.
 - 16.2.1. If you are unsure about or need to resolve the status of your account, please contact the **GPW** Finance Department prior to submitting your notices. (If the account status is not resolved prior to submission of your notice, the notice will be failed during the process).
17. **APPLICABLE ONLY TO CASH CUSTOMERS:**
 - 17.1. Cash customers doing **bulk payments** must use a **single email address** in order to use the **same proof of payment** for submitting multiple notices.
18. The responsibility lies with you, the customer, to ensure that the payment made for your notice(s) to be published is sufficient to cover the cost of the notice(s).
19. Each quotation will be associated with one proof of payment / purchase order / cash receipt.
 - 19.1. This means that the quotation number can only be used once to make a payment.

GOVERNMENT PRINTING WORKS - BUSINESS RULES**COPY (SEPARATE NOTICE CONTENT DOCUMENT)**

20. Where the copy is part of a separate attachment document for Z95, Z95Prov and TForm03
- 20.1. Copy of notices must be supplied in a separate document and may not constitute part of any covering letter, purchase order, proof of payment or other attached documents.
- The content document should contain only one notice. (You may include the different translations of the same notice in the same document).
- 20.2. The notice should be set on an A4 page, with margins and fonts set as follows:
- Page size = A4 Portrait with page margins: Top = 40mm, LH/RH = 16mm, Bottom = 40mm;
Use font size: Arial or Helvetica 10pt with 11pt line spacing;
- Page size = A4 Landscape with page margins: Top = 16mm, LH/RH = 40mm, Bottom = 16mm;
Use font size: Arial or Helvetica 10pt with 11pt line spacing;

CANCELLATIONS

21. Cancellation of notice submissions are accepted by **GPW** according to the deadlines stated in the table above in point 2. Non-compliance to these deadlines will result in your request being failed. Please pay special attention to the different deadlines for each gazette. Please note that any notices cancelled after the cancellation deadline will be published and charged at full cost.
22. Requests for cancellation must be sent by the original sender of the notice and must be accompanied by the relevant notice reference number (N-) in the email body.

AMENDMENTS TO NOTICES

23. With effect from 01 October 2015, **GPW** will not longer accept amendments to notices. The cancellation process will need to be followed according to the deadline and a new notice submitted thereafter for the next available publication date.

REJECTIONS

24. All notices not meeting the submission rules will be rejected to the customer to be corrected and resubmitted. Assistance will be available through the Contact Centre should help be required when completing the forms. (012-748 6200 or email info.egazette@gpw.gov.za). Reasons for rejections include the following:
- 24.1. Incorrectly completed forms and notices submitted in the wrong format, will be rejected.
- 24.2. Any notice submissions not on the correct *Adobe* electronic form, will be rejected.
- 24.3. Any notice submissions not accompanied by the proof of payment / purchase order will be rejected and the notice will not be processed.
- 24.4. Any submissions or re-submissions that miss the submission cut-off times will be rejected to the customer. The Notice needs to be re-submitted with a new publication date.

GOVERNMENT PRINTING WORKS - BUSINESS RULES**APPROVAL OF NOTICES**

25. Any notices other than legal notices are subject to the approval of the Government Printer, who may refuse acceptance or further publication of any notice.
26. No amendments will be accepted in respect to separate notice content that was sent with a Z95 or Z95Prov notice submissions. The copy of notice in layout format (previously known as proof-out) is only provided where requested, for Advertiser to see the notice in final Gazette layout. Should they find that the information submitted was incorrect, they should request for a notice cancellation and resubmit the corrected notice, subject to standard submission deadlines. The cancellation is also subject to the stages in the publishing process, i.e. If cancellation is received when production (printing process) has commenced, then the notice cannot be cancelled.

GOVERNMENT PRINTER INDEMNIFIED AGAINST LIABILITY

27. The Government Printer will assume no liability in respect of—
 - 27.1. any delay in the publication of a notice or publication of such notice on any date other than that stipulated by the advertiser;
 - 27.2. erroneous classification of a notice, or the placement of such notice in any section or under any heading other than the section or heading stipulated by the advertiser;
 - 27.3. any editing, revision, omission, typographical errors or errors resulting from faint or indistinct copy.

LIABILITY OF ADVERTISER

28. Advertisers will be held liable for any compensation and costs arising from any action which may be instituted against the Government Printer in consequence of the publication of any notice.

CUSTOMER INQUIRIES

Many of our customers request immediate feedback/confirmation of notice placement in the gazette from our Contact Centre once they have submitted their notice – While **GPW** deems it one of their highest priorities and responsibilities to provide customers with this requested feedback and the best service at all times, we are only able to do so once we have started processing your notice submission.

GPW has a 2-working day turnaround time for processing notices received according to the business rules and deadline submissions.

Please keep this in mind when making inquiries about your notice submission at the Contact Centre.

29. Requests for information, quotations and inquiries must be sent to the Contact Centre ONLY.
30. Requests for Quotations (RFQs) should be received by the Contact Centre at least **2 working days** before the submission deadline for that specific publication.

GOVERNMENT PRINTING WORKS - BUSINESS RULES

PAYMENT OF COST

31. The Request for Quotation for placement of the notice should be sent to the Gazette Contact Centre as indicated above, prior to submission of notice for advertising.
32. Payment should then be made, or Purchase Order prepared based on the received quotation, prior to the submission of the notice for advertising as these documents i.e. proof of payment or Purchase order will be required as part of the notice submission, as indicated earlier.
33. Every proof of payment must have a valid **GPW** quotation number as a reference on the proof of payment document.
34. Where there is any doubt about the cost of publication of a notice, and in the case of copy, an enquiry, accompanied by the relevant copy, should be addressed to the Gazette Contact Centre, **Government Printing Works**, Private Bag X85, Pretoria, 0001 email: info.egazette@gpw.gov.za before publication.
35. Overpayment resulting from miscalculation on the part of the advertiser of the cost of publication of a notice will not be refunded, unless the advertiser furnishes adequate reasons why such miscalculation occurred. In the event of underpayments, the difference will be recovered from the advertiser, and future notice(s) will not be published until such time as the full cost of such publication has been duly paid in cash or electronic funds transfer into the **Government Printing Works** banking account.
36. In the event of a notice being cancelled, a refund will be made only if no cost regarding the placing of the notice has been incurred by the **Government Printing Works**.
37. The **Government Printing Works** reserves the right to levy an additional charge in cases where notices, the cost of which has been calculated in accordance with the List of Fixed Tariff Rates, are subsequently found to be excessively lengthy or to contain overmuch or complicated tabulation.

PROOF OF PUBLICATION

38. Copies of any of the *Government Gazette* or *Provincial Gazette* can be downloaded from the **Government Printing Works** website www.gpwonline.co.za free of charge, should a proof of publication be required.
39. Printed copies may be ordered from the Publications department at the ruling price. The **Government Printing Works** will assume no liability for any failure to post or for any delay in despatching of such *Government Gazette(s)*

GOVERNMENT PRINTING WORKS CONTACT INFORMATION

Physical Address:

Government Printing Works
149 Bosman Street
Pretoria

Postal Address:

Private Bag X85
Pretoria
0001

GPW Banking Details:

Bank: ABSA Bosman Street
Account No.: 405 7114 016
Branch Code: 632-005

For Gazette and Notice submissions: Gazette Submissions:

For queries and quotations, contact: Gazette Contact Centre:

E-mail: submit.egazette@gpw.gov.za

E-mail: info.egazette@gpw.gov.za

Tel: 012-748 6200

Contact person for subscribers: Mrs M. Toka:

E-mail: subscriptions@gpw.gov.za

Tel: 012-748-6066 / 6060 / 6058

Fax: 012-323-9574

GENERAL NOTICES • ALGEMENE KENNISGEWINGS

NOTICE 14 OF 2020**COMPILATION OF AN ALL-INCLUSIVE LAND USE MANAGEMENT SCHEME (LUMS) FOR THE DIPALESENG MUNICIPALITY**

Dipaleseng Local Municipality hereby gives notice, that in terms of Chapter 4 Section 20 of the Spatial Planning and Land use Management Act of 2013 (SPLUMA) read in conjunction with Section 21 of the Dipaleseng LM Spatial Planning and Land use Management By-Law of 2016 that the Draft Land Use Management Scheme for Dipaleseng Local Municipality will be available for public inspection, from the 13th of March 2020, at the following venues:

- Balfour
- Siyathemba
- Greylingstad
- Grootlvei

The purpose of the Land Use Management Scheme is to regulate, handle and standardise general land uses and associated applications for the total municipal area.

Comments, objections or representations, if any, regarding the draft LUMS document must be submitted in writing before or on the 13th of May 2020 to the Dipaleseng Municipal Main office.

Further details regarding the draft LUMS document may be obtained from the Dipaleseng Municipality, Mr Jonas Nkutha, 087 527 0539, during normal office hours.

The Municipal Manager
Dipaleseng Local Municipality
Private Bag X1005
Balfour
2410

KENNISGEWING 14 VAN 2020**SAMESTELLING VAN 'N ALLE INKLUSIEWE GRONDGEBRUIKSBESTUURSKEMA (LUMS) VIR DIE DIPALESENG MUNISIPALITEIT**

Dipaleseng Plaaslike Munisipaliteit gee hiermee kennis dat ingevolge Hoofstuk 4, artikel 20 van die Wet op Ruimtelike Beplanning en Grondgebruikbestuur van 2013 (SPLUMA) saamgelees met Artikel 21 van die Dipaleseng LM Ruimtelike Beplanning en Grondgebruikbestuur By- Wet van 2016 dat die Konsep Grondgebruikbestuurskema vir die Dipaleseng Plaaslike Munisipaliteit vanaf 13 Maart 2020, ter insae beskikbaar sal wees by die volgende lokale:

- Balfour
- Siyathemba
- Greylingstad
- Grootlvei

Die doel van die Grondgebruikbestuurskema is om algemene grondgebruik en gepaardgaande toepassings vir die totale munisipale gebied te reguleer, te hanteer en te standaardiseer.

Kommentaar, besware of verhoë, indien enige, rakende die ontwerp van die LUMS-dokument moet skriftelik voor of op 13 Mei 2020 by die Dipaleseng Munisipale Hoofkantoor ingedien word.

Verdere besonderhede van die proses kan by mnr. Jonas Nkutha, 087 527 0539, van die Dipaleseng Munisipaliteit, gedurende normale kantoorure verkry word.

Die Munisipale Bestuurder
Dipaleseng Plaaslike Munisipaliteit
Posbus X 1005
Balfour
2410

PROCLAMATION • PROKLAMASIE

PROCLAMATION 17 OF 2020**MKHONDO LOCAL MUNICIPALITY****DECLARATION OF PIET RETIEF EXTENSION 23 AS AN APPROVED TOWNSHIP**

In terms of section 103 of the Town Planning and Townships Ordinance, 1986 (Ordinance 15 of 1986), the Mkhondo Local Municipality hereby declares the township Piet Retief Extension 23 to be an approved Township, subject to the conditions set out in the Schedule hereto:

SCHEDULE

STATEMENT OF THE CONDITIONS UNDER WHICH THE APPLICATION MADE BY YANKEE BLUE INVESTMENTS (PTY) LTD (HEREINAFTER REFERRED TO AS THE APPLICANT/TOWNSHIP OWNER) UNDER THE PROVISIONS OF CHAPTER 3 (PART C) OF THE TOWN-PLANNING AND TOWNSHIPS ORDINANCE, 1986 (ORDINANCE 15 OF 1986), FOR PERMISSION TO ESTABLISH A TOWNSHIP ON PORTION 137 OF THE FARM WELGEKOZEN 514, REGISTRATION DIVISION IT, MPUMALANGA PROVINCE HAS BEEN GRANTED BY THE MKHONDO LOCAL MUNICIPALITY

1. CONDITIONS OF ESTABLISHMENT (CONDITIONS WHICH WILL BE APPLICABLE TO THE APPROVED TOWNSHIP IN TERMS OF SECTION 103 OF ORDINANCE 15 OF 1986)

1.1 Name

The name of the township shall be *Piet Retief Extension 23*.

1.2 Design and Layout

The township shall consist of erven and streets indicated on the General Plan 7/2019.

1.3 Access

The township shall gain access via a right of way servitude (vide SG 726/2016) over the adjacent township of Thandekile Extension 4 which, in turn, will link with the N2 national road to the satisfaction of the municipality.

1.4 Removal, Repositioning, Modification or Replacement of Existing Post Office/Telkom plant

If, by reason of the establishment of the township, it should become necessary to remove, reposition, modify or replace any existing Post Office/Telkom plant, the cost thereof shall be borne by the township applicant/owner.

1.5 Obligations with regard to services and restrictions regarding alienation of erven

The township owner shall within such period as the municipality may determine, fulfil its obligations in respect of the provision of water, electricity and sanitary services as well as the construction of roads and stormwater drainage and the installation of systems therefore, as previously agreed upon between the township owner and the municipality. The erven may not be alienated or be transferred into the name of a purchaser prior to the municipality certifying that sufficient guarantees in respect of the supply of services by the township owner have been submitted to the municipality.

1.6 Registration of Notarial Tie

The applicant shall when and if required by the Municipality, arrange for the registration of a notarial tie between Erf 2687 Piet Retief Extension 23 and Erf 32 in the township Thandekile Extension 2 and Erf 5 Thandekile Extension 1 and Erf 49 Thandekile Extension 4 and Erf 46 Thandekile Extension 3, such that the said erven may function as a single site assembly and for such purposes the common boundary separating the erven shall not be deemed to exist and shall not preclude the siting of buildings in a manner as to straddle the common boundary as aforesaid.

2. CONDITIONS TO BE COMPLIED WITH BEFORE ERVEN IN THE TOWNSHIP BECOME REGISTRABLE

2.1 Installation and provision of services

- 3.1.1 The township applicant/owner shall install and provide internal engineering services in the township as provided for in the services agreement.
- 3.1.2 The municipality shall install and provide external engineering services for the township as provided for in the services agreement.

3. DISPOSAL OF EXISTING CONDITIONS OF TITLE.

All erven shall be made subject to existing conditions and servitudes, if any:

- 3.1 Including the condition reserving the right to fell and remove Gum Trees which affects all erven in the township and which reads as follows:

"A. The Remaining extent of the said farm WELGEKOZEN No 504, Registration Division I.T., district Piet Retief, measuring as such 96,1015 Hectares (of which the property transferred hereunder forms a Portion) is:

(a) Subject to the right to fell and remove Gum Trees with certain ancillary rights as is more fully set out in Notarial Deed No 256 /1932 – S, registered on the 28th day of June, 1932".

- 3.2 Excluding the servitude, 5 metres wide in favour of Portion 63, Welgekozen 514 IT which only affects Erf 2688 in the township and which reads as follows:

"C. Die eiendom hiermee getranspoteer is verder onderhewig aan 'n Serwituut van Reg van Weg 5 meter wyd ten gunste van Gedeelte 63 ('n Gedeelte van Gedeelte 52) van die plaas WELGEKOZEN 514, Registrasie Afdeling IT, Transvaal, Groot 1108 vierkante meter, welke serwituut se suidelike grens aangedui word deur die lyn de en die lyn efc die suidwestelike grens aangedui op kaart LG No 725/2016 en soos sal blyk uit akte van Transport T34567/1979."

- 3.3 Excluding the 1 meter wide servitude in favour of the Remaining Extent of Portion 52 of the farm Wegekozen 514, IT, which only affects Erf 2687 in the township and which reads as follows:

"D. ONDERHEWIG aan n Waterleidingserwituut 1 meter wyd, die westelike grens van Gedeelte 137, parallel en ewewydig vir die volle lengte van die lyn EF op die aangehegte kaart LG No 725/2016 ten gunste van:

Die Resterende Gedeelte van Gedeelte 52 van die Plaas Welgekozen 514
Registrasie Afdeling I.T., Provinsie van Mpumalanga
Groot: 7,5107 (SEWE KOMMA VYF EEN NUL SEWE) HEKTAAR
GEHOU KRAGTENS AKTE VAN TRANSPORT T82301/1991."

- 3.4 Excluding a right of way servitude in favour of Portion 65 of the farm Welgekozen 514, Registration Division IT, which only affects Erf 2687 in the township and which reads as follows:

"E. Binnegemelde eiendom is onderhewig aan n Reg van Weg ten gunste van Gedeelte 64 van die Plaas Welgekozen 514, Registrasie Afdeling I.T., Provinsie van Mpumalang3a, welke serwituut aangedui word deur die figuur bcFb op Kaart S.G. Nommer 725/2016.

4. CONDITIONS OF TITLE

- 4.1 Conditions of title imposed in terms of the Town Planning and Townships Ordinance, 1986 (Ordinance 15 of 1986)

- 4.1.1 All erven

- (a) The erf is subject to a servitude, 2 metres wide along any two boundaries in favour of the municipality for sewerage and other municipal purposes and, in the case of a panhandle erf, an additional servitude for municipal purposes 2 metres wide across the access portion of the erf, if and

when required by the municipality: Provided that the municipality may relax or grant exemption from the required servitudes.

- (b) No building or other structures shall be erected within the aforesaid servitude area and no large rooted trees shall be planted within the area of such servitude or within the 2 metres thereof.
- (c) The municipality shall be entitled to deposit temporarily on the land adjoining the aforesaid servitude such material as may be excavated by it during the course of the construction, maintenance or removal of such sewerage mains and other works, as it, in its discretion, may deem necessary and shall further be entitled to reasonable access to the said land for the aforesaid purpose, subject to any damage done during the process of the construction, maintenance or removal of such sewerage mains and other works being made good by the municipality.

MR. M KUNENE
MUNICIPAL MANAGER

February 2020

LOCAL AUTHORITY NOTICE
..... OF 2020

MKHONDO LOCAL MUNICIPALITY

PIET RETIEF AMENDMENT SCHEME 420

It is hereby notified in terms of the provisions of section 125(1) of the Town Planning and Townships Ordinance, 1986 (Ordinance 15 of 1986), that the Mkhondo Local Municipality has approved an amendment scheme with regard to the land in the township **Piet Retief Extension 23** being an amendment of the Piet Retief Town Planning Scheme, 1980.

The Map 3 documents and the scheme clauses of the amendment scheme are filed with the Municipal Manager of the Mkhondo Local Municipality and are open for inspection during normal office hours.

This amendment scheme is known as Krugersdorp **Amendment Scheme 420**.

MR. M KUNENE
MUNICIPAL MANAGER

February 2020

PROCLAMATION 18 OF 2020
MKHONDO LOCAL MUNICIPALITY

DECLARATION OF THANDEKILE EXTENSION 4 AS AN APPROVED TOWNSHIP

In terms of section 103 of the Town Planning and Townships Ordinance, 1986 (Ordinance 15 of 1986), the Mkhondo Local Municipality hereby declares the township Thandekile Extension 4 to be an approved Township, subject to the conditions set out in the Schedule hereto:

SCHEDULE

STATEMENT OF THE CONDITIONS UNDER WHICH THE APPLICATION MADE BY RED KITE INVESTMENTS (PTY) LTD HEREINAFTER REFERRED TO AS THE APPLICANT/TOWNSHIP OWNER) UNDER THE PROVISIONS OF CHAPTER 3 (PART C) OF THE TOWN-PLANNING AND TOWNSHIPS ORDINANCE, 1986 (ORDINANCE 15 OF 1986), FOR PERMISSION TO ESTABLISH A TOWNSHIP ON PORTION 14 OF THE FARM WELGEKOZEN 514 REGISTRATION DIVISION IT, MPUMALANGA PROVINCE HAS BEEN GRANTED BY THE MKHONDO LOCAL MUNICIPALITY

1. CONDITIONS OF ESTABLISHMENT (CONDITIONS WHICH WILL BE APPLICABLE TO THE APPROVED TOWNSHIP IN TERMS OF SECTION 103 OF ORDINANCE 15 OF 1986)

1.1 NAME

The name of the township shall be *Thandekile Extension 4*.

1.2 DESIGN

The township shall consist of erven and streets as indicated General Plan 9/2019.

1.3 STORM WATER DRAINAGE AND STREET CONSTRUCTION

- 1.3.1 The township owner shall, on request by the Municipality submit to such Municipality for its approval a detailed scheme, complete with plans, sections and specifications, prepared by a civil engineer approved by the Municipality, for the collection and disposal of storm water throughout the township by means of properly constructed works and for the construction, tar macadamising, kerbing and channelling of the streets therein together with the provision of such retaining walls as may be considered necessary by the Municipality.
- 1.3.2 The scheme shall provide for the catchment of storm water in catch pits whence it shall be drained off in watertight pipes of durable material, approved by the Municipality, in such manner that water will in no way dam up or infiltrate on or near the surface of the ground.
- 1.3.3 Furthermore, the scheme shall, indicate the route and gradient by which each erf gains access to the street on which it abuts.
- 1.3.4 The township owner shall, when required by the Municipality to do so, carry out the approved scheme at its own expense on behalf of and to the satisfaction of the Municipality under supervision of a civil engineer approved by the Municipality.

1.3.5 The township owner shall be responsible for the maintenance of the streets to the satisfaction of the Municipality until the streets have been constructed as set out above.

1.3.6 If the township owner fails to comply with the provisions of paragraphs 2.3.1 to 2.3.5 hereof the Municipality shall be entitled to do the work at the cost of the township owner.

1.3.7 The drainage scheme shall be to the satisfaction of the Municipality.

1.4 ACCESS

1.4.1 No direct access shall be allowed from the N2 National Road to the erven in the township.

1.4.2 Access to the township shall only be allowed from the road along the northern boundary of the township.

1.5 ENGINEERING SERVICES

1.5.1 The Township Owner shall make the necessary arrangements with the Municipality for the provision and installation / construction of the internal and external water, electricity, sewerage, roads and storm water drainage engineering services in and for the township in terms of Chapter V of the Ordinance.

1.5.2 The applicant shall be responsible for the installation and provision of internal engineering services to the satisfaction of the relevant department.

1.5.3 The township owner shall within such period as the Municipality may determine, fulfill its obligations in respect of the provision and installation of engineering services as previously agreed upon between the township owner and the Municipality.

1.5.4 Once water, sewer and electrical networks have been installed, same will be transferred to the Municipality, free of cost, who shall maintain these networks.

1.6 DEMOLITION OF BUILDINGS AND STRUCTURES

The township owner shall, where applicable, and at its own expense cause all existing buildings and structures situated within the building line reserves, side spaces or over common boundaries to be demolished to the satisfaction of the Municipality, within a period of six months from the date of publication of the notice declaring the township to be an approved township.

1.7 REMOVAL OR REPLACEMENT OF MUNICIPAL SERVICES

If, by reason of the establishment of the township, it becomes necessary to remove or replace any existing municipal services, the cost thereof shall be borne by the township owner.

1.8 MITIGATIONS

No building, structure or other thing (including anything which is attached to the land on which it stands even though it does not form part of that land) shall be erected, laid or established without the written approval of the South African National Roads Agency Limited within a distance of 20 metres measured from the N2 national road reserve boundary.

1.9 ACCEPTANCE AND DISPOSAL OF STORMWATER

The township owner shall arrange for the drainage of the township to fit in with that of the N2 National Road and for all storm water running off or being diverted from the road to be received and disposed of.

1.10 REGISTRATION OF NOTARIAL TIE

The applicant shall when and if required by the Municipality, register a notarial tie of Erf 49 Thandekile Extension 4 with Erf 32 in the township Thandekile Extension 2 and Erf 5 Thandekile Extension 1 and Erf 46 Thandekile Extension 4 and Erf 2687 Piet Retief Extension 24, such that the said erven may function as a single site assembly and for such purposes the common boundary separating the erven

shall not be deemed to exist and shall not preclude the siting of buildings in a manner as to straddle the common boundary as aforesaid.

2 DISPOSAL OF EXISTING CONDITIONS OF TITLE

All erven shall be made subject to, and where relevant entitled to, existing conditions and servitudes, if any;

2.1 Including the following, which affects all erven in the Township:

The unnumbered condition on page 2 of Deed of Transfer T4452/2013 which reads as follows:

"Specially subject to certain deed of servitude no. 235/1893 entered into by Jacobus Paulus Engelbrecht, Senior, and the Government of the Late South African Republic to the effect that the said Government shall have the right in perpetuity to make a good and substantial furrow across the property from the spruit to the north east of the town of Piet Retief and shall be subject to all town regulations".

2.2 Excluding the following servitude which only affects Erf 49 in the township:

By virtue of Notarial Deed of Servitude, K 516/2019S the within mentioned property is subject to a Servitude of right of way in favour of the General Public, as will more fully appear from the aforesaid Notarial Deed and Diagram 726/2016 annexed thereto.

3. CONDITIONS OF TITLE

The erven mentioned hereunder shall be subject to the conditions as indicated, imposed by the Municipality in terms of the Town Planning and Townships Ordinance, 1986.

3.1 ALL ERVEN

3.1.1 The erf is subject to a servitude, 2m wide, in favour of the Municipality, for sewerage and other municipal purposes, along any two boundaries other than a street boundary and in the case of a panhandle erf, an additional servitude for municipal purposes 2m wide across the access portion of the erf, if and when required by the Municipality: Provided that the Municipality may dispense with any such servitude.

3.1.2 No building or other structure shall be erected within the aforesaid servitude area and no large rooted trees shall be planted within the area of such servitude or within 2m thereof.

3.1.3 The Municipality shall be entitled to deposit temporarily on the land adjoining the aforesaid servitude such material as may be excavated by it during the course of the construction, maintenance or removal of such sewerage mains and other works as it, in its discretion may deem necessary and shall further be entitled to reasonable access to the said land for the aforesaid purpose subject to any damage done during the process of the construction, maintenance or removal of such sewerage mains and other works being made good by the Municipality.

3.2 ERF 48

The Erf is subject to a Servitude of Right of Way over the whole of the erf for Road purposes and conveyance of engineering services, in favour of the Municipality, as indicated on the General Plan.

**MR. M KUNENE
MUNICIPAL MANAGER**

February 2020

MKHONDO LOCAL MUNICIPALITY**PIET RETIEF AMENDMENT SCHEME 418**

It is hereby notified in terms of the provisions of section 125(1) of the Town Planning and Townships Ordinance, 1986 (Ordinance 15 of 1986), that the Mkhondo Local Municipality has approved an amendment scheme with regard to the land in the township **Thandekile Extension 4** being an amendment of the Piet Retief Town Planning Scheme, 1980.

The Map 3 documents and the scheme clauses of the amendment scheme are filed with the Municipal Manager of the Mkhondo Local Municipality and are open for inspection during normal office hours.

This amendment scheme is known as Krugersdorp **Amendment Scheme 418**.

MR. M KUNENE
MUNICIPAL MANAGER

February 2020

PROCLAMATION 19 OF 2020
MKHONDO LOCAL MUNICIPALITY

DECLARATION OF THANDEKILE EXTENSION 3 AS AN APPROVED TOWNSHIP

In terms of section 103 of the Town Planning and Townships Ordinance, 1986 (Ordinance 15 of 1986), the Mkhondo Local Municipality hereby declares the township Thandekile Extension 3 to be an approved Township, subject to the conditions set out in the Schedule hereto:

SCHEDULE

STATEMENT OF THE CONDITIONS UNDER WHICH THE APPLICATION MADE BY YANKEE BLUE INVESTMENTS (PTY) LTD (HEREINAFTER REFERRED TO AS THE APPLICANT/TOWNSHIP OWNER) UNDER THE PROVISIONS OF CHAPTER 3 (PART C) OF THE TOWN-PLANNING AND TOWNSHIPS ORDINANCE, 1986 (ORDINANCE 15 OF 1986), FOR PERMISSION TO ESTABLISH A TOWNSHIP ON PORTION 15 OF THE FARM WELGEOZEN 514, REGISTRATION DIVISION IT, MPUMALANGA PROVINCE HAS BEEN GRANTED BY THE MKHONDO LOCAL MUNICIPALITY

1. CONDITIONS OF ESTABLISHMENT (CONDITIONS WHICH WILL BE APPLICABLE TO THE APPROVED TOWNSHIP IN TERMS OF SECTION 103 OF ORDINANCE 15 OF 1986)

(a) NAME

The name of the township shall be *Thandekile Extension 3*.

(b) DESIGN

The township shall consist of erven as indicated on General Plan 8/2019.

(c) DEMOLITION OF BUILDINGS AND STRUCTURES

The Applicant shall at own expense cause all existing buildings and structures situated within the building line reserves, side spaces or over common boundaries to be demolished to the satisfaction of the local authority, when required by the local authority to do so.

(d) OBLIGATIONS WITH REGARD TO ESSENTIAL SERVICES

The Applicant shall within such period as the local authority may determine, fulfill his obligations in respect of the provision of water, electricity and sanitary services and the installation of systems therefore, as previously agreed upon between the township owner and the local authority.

(e) REGISTRATION OF NOTARIAL TIE

The applicant shall when and if required by the Municipality, register a notarial tie of Erf 46 Thandekile Extension 3 with Erf 32 in the township Thandekile Extension 2 and Erf 5 Thandekile Extension 1 and Erf 49 Thandekile Extension 4 and Erf 2687 Piet Retief Extension 23, such that the said erven may function as a single site assembly and for such purposes the common boundary separating the erven shall not be deemed to exist and shall not preclude the siting of buildings in a manner as to straddle the common boundary as aforesaid.

2. DISPOSAL OF EXISTING CONDITIONS OF TITLE

All erven shall be made subject to existing conditions and servitudes if any, including the following, which affects all erven in the Township:

Condition A(a) as more fully set out in paragraph 1 on page 2 of Deed of Transfer T2131/2013 which reads as follows:

"Specially subject to certain Deed of Servitude No. 235/1893 entered into by Jacobus Paulus Engelbrecht, Senior, and the State of the Late South African Republic to the effect that the said State shall have the right in perpetuity to make a good and substantial furrow across the property from the spruit to the North East of the Town of Piet Retief: that the State shall have the right to fence in such furrow and further that the said furrow shall become the property of the said Town of Piet Retief and shall be subject to all town regulations".

3. CONDITIONS OF TITLE

Conditions imposed by the local authority in terms of the provisions of the Town Planning and Townships Ordinance, 1986 (Ordinance 15 of 1986)

The erven mentioned hereunder shall be subject to the conditions as indicated:

3.1 ALL ERVEN

- (i) The erf is subject to a servitude, 2m wide, in favour of the local authority, for sewerage and other municipal purposes, along any two boundaries other than a street boundary and in the case of a panhandle erf, an additional servitude for municipal purposes 2m wide across the access portion of the erf, if and when required by the local authority: provided that the local authority may dispense with any such servitude.
- (ii) No building or other structure shall be erected within the aforesaid servitude area and no large rooted trees shall be planted within the area of such servitude or within 2m thereof.
- (iii) The local authority shall be entitled to deposit temporarily on the land adjoining the aforesaid servitude area such material as may be excavated by them during the course of the construction, maintenance or removal of such works as it in its discretion may deem necessary and shall further be entitled to reasonable access to the said land for the aforesaid purpose subject to any damage done during the process of the construction, maintenance or removal of such works being made good by the local authority.

3.2 ERF 47

The erf is subject to a servitude of Right of Way over the whole of the erf for Road purposes, and for the conveyance of engineering services in favour of the Municipality, as indicated on the general plan.

MR. M KUNENE
MUNICIPAL MANAGER

February 2020

MKHONDO LOCAL MUNICIPALITY**PIET RETIEF AMENDMENT SCHEME 419**

It is hereby notified in terms of the provisions of section 125(1) of the Town Planning and Townships Ordinance, 1986 (Ordinance 15 of 1986), that the Mkhondo Local Municipality has approved an amendment scheme with regard to the land in the township **Thandekile Extension 3** being an amendment of the Piet Retief Town Planning Scheme, 1980.

The Map 3 documents and the scheme clauses of the amendment scheme are filed with the Municipal Manager of the Mkhondo Local Municipality and are open for inspection during normal office hours.

This amendment scheme is known as Krugersdorp **Amendment Scheme 419**.

MR. M KUNENE
MUNICIPAL MANAGER

February 2020

PROCLAMATION 20 OF 2020

EMALAHLENI LOCAL MUNICIPALITY
NOTICE OF REMOVAL OF RESTRICTIVE TITLE DEED CONDITIONS -
ERF 573, EMALAHLENI EXTENSION 3

The Local Municipality of Emalahleni declares hereby in terms of the provisions of Section 67(1) of the Emalahleni Spatial Planning and Land Use Management By-Law, 2016, read with the provisions of the Spatial Planning and Land Use Management Act, that it has approved an application for the removal of restrictive title condition (i) of Title Deed T8882/2016, pertaining to Erf 573, eMalahleni (Witbank) Extension 3 under resolution S.LDO.016/19 dated 8 February 2019.

HS MAYISELA
MUNICIPAL MANAGER

Civic Centre, Mandela Street P.O. Box 3, eMalahleni, 1035

Publication date: Provincial Gazette of Mpumalanga: 13 March 2020

PROVINCIAL NOTICES • PROVINSIALE KENNISGEWINGS

PROVINCIAL NOTICE 41 OF 2020

NOTICE IN TERMS OF SECTION 81(1)(A) OF THE MBOMBELA BY-LAW ON SPATIAL PLANNING AND LAND USE MANAGEMENT, 2015, READ WITH SECTION 50 OF THE MBOMBELA BY-LAW ON SPATIAL PLANNING AND LAND USE MANAGEMENT, 2015, READ WITH THE WHITE RIVER TOWN PLANNING SCHEME, 1984.

Notice is hereby given that we, Smit & Fisher Planning (Pty) Ltd intend applying to the Mbombela Local Municipality in terms of Section 50 of the Mbombela By-Law on Spatial Planning and Land Use Management By-Law, 2015, read with the White River Town Planning Scheme, 1984 in order to rezone **Erf 2579, Nelspruit Extension 14 Township (Old Apostolic Church - Steiltes Community)** from “Special” to “Special” with an annexure to include a Telecommunication Tower and Base Station.

Plans and/or particulars relating to the application may be inspected during office hours at the **Mbombela Local Municipal Offices, Directorate: Technical Services, Urban and Rural Management, 1 Nel Street, Nelspruit, 1200** and the applicant. Any person having any objection to the granting of this application must lodge the objection in writing with both the **Municipal Manager, P O Box 45, Mbombela, 1200**, and the **undersigned** not later than **30 days after the 1st newspaper advertisement on 06 March 2020**. Please use Municipal Reference: **AS/18/02155**. Any person who cannot write, may during normal office hours at the offices of the Mbombela Local Municipality, request **Luxolo Sikonde (013 759 2373)** or any town planner employed at the municipality, to assist to transcribe that person's objections or comments.

A person claiming to be an interested person in a land development application has the burden of establishing his or her status as an interested person. An interested person has to provide contact details in order to be heard. Information has to be provided with regard to the grounds of an objection and how rights and interests are affected. If an interested party has not demonstrated an interest in all of the issues presented in a particular land development application or an appeal, the Municipal Planning Tribunal or appeal authority may limit the interested person's participation to only those issues in which an interest has been established.

Date of first placement: **06 March 2020**
Date of second placement: **13 March 2020**
Objection expiry date: **07 April 2020**

Site ref: **Enterprise**

Smit & Fisher Planning (Pty) Ltd
371 Melk Street, Nieuw Muckleneuk, 0181
P.O. Box 908, Groenkloof, 0027
Tel: (012) 346 2340
E-mail: rohanv@sfplan.co.za

6-13

PROVINSIALE KENNISGEWING 41 VAN 2020

KENNISGEWING IN TERME VAN ARTIKEL 81(1)(A) VAN DIE MBOMBELA BY-WET OP RUIMTELIKE BEPLANNING EN GRONDGEBRUIKSBEHEER, 2015, LEES SAAM MET ARTIKEL 50 VAN DIE MBOMBELA BY-WET OP RUIMTELIKE BEPLANNING EN GRONDGEBRUIKSBEHEER, 2015, LEES SAAM MET DIE WITRIVIER DORPSBEPLANNINGSKEMA, 1984

Kennis geskied hiermee dat ons, Smit & Fisher Beplanning (Edms) Bpk, van voornemens is om by die Mbombela Plaaslike Munisipaliteit aansoek te doen in terme van Artikel 50 van die Mbombela By-Wet op Ruimtelike Beplanning en Grondgebruiksbeheer, 2015, lees saam met die Witrivier Dorpsbeplanningskema, 1984 vir die hersonering van **Erf 2579, Nelspruit Uitbreiding 10 Dorpsgebied (Ou Apostoliese Kerk – Steiltes Gemeenskap)** van “**Spesiaal**” na “**Spesiaal**” met ‘n bylaag vir die insluiting van ‘n telekommunikasie toring en basisstasie daarin.

Planne en/of besonderhede aangaande hierdie aansoek lê ter insae gedurende gewone kantoorure te **Mbombela Plaaslike Munisipale Kantore: Direktoraat: Tegniese dienste, Stads-en Streeksbeplanning afdeling, Nelstraat 1, Nelspruit, 1200** en die applikant. Enige persoon wat beswaar het teen die goedkeuring van hierdie aansoek, moet die beswaar skriftelik indien by beide die **Munisipale Bestuurder, Posbus 45, Mbombela, 1200** en die ondergetekende nie later as **30 dae vanaf die 1ste koerantadvertensie op 06 Maart 2020** nie. Gebruik Munisipale Verwyssing: **AS/18/02155**. Enige persoon wat nie kan skryf nie, kan gedurende gewone kantoor ure by die Mbombela Plaaslike Munisipaliteit, by **Luxolo Sikonde (013 759 2373)** of enige ander stadsbeplanner in diens van die munisipaliteit vra om te help met die skrywe van sulke beswaar of kommentaar.

‘n Persoon wat beweer dat hy of sy ‘n belanghebbende persoon in ‘n grondontwikkelingsaansoek of ‘n appèl is, het die onus om sy of haar status as ‘n belangstellende persoon te bevestig. ‘n Belanghebbende persoon moet kontakbesonderhede verskaf om aangehoor te word. Die inligting wat verskaf moet word met betrekking tot die gronde van ‘n beswaar, is hoe die belanghebbende se regte en belange geraak word. Indien ‘n belanghebbende persoon nie ‘n belang in al die kwessies voorgelê in ‘n bepaalde grondontwikkelingsaansoek of appèl gedemonstreer het nie, kan die Munisipale Beplanningstribunaal of appèlowerheid die belanghebbende persoon se deelname beperk tot slegs dié aangeleenthede waarin ‘n belang gestaaft is.

Datum van eerste plasing: **06 Maart 2020**

Datum van tweede plasing: **13 Maart 2020**

Verstryking van beswaar tydperk: **07 April 2020**

Ons verwysing: **Enterprise**

Smit & Fisher Planning (Edms) Bpk
371 Melk Straat, Nieuw Muckleneuk, 0181
Posbus 908, Groenkloof, 0027
Tel.: (012) 346 2340
Epos: rohanv@sfplan.co.za

PROVINCIAL NOTICE 44 OF 2020

STEVE TSHWETE AMENDMENT SCHEME 809

NOTICE OF APPLICATION FOR THE AMENDMENT OF THE STEVE TSHWETE TOWN PLANNING SCHEME, 2004, IN TERMS OF SECTIONS 62(1) AND 94(1) (A) OF THE STEVE TSHWETE SPATIAL PLANNING AND LAND USE MANAGEMENT BYLAW, 2016.

I, Jaco Peter le Roux, of Afriplan CC being the authorized agent of the owner of **Portion 19 of Erf 1102, Middelburg** hereby give notice in terms of Section 94(1)(a) of the Steve Tshwete Spatial Planning and Land Use Management Bylaw, 2016, that I have applied to the Steve Tshwete Local Municipality for the amendment of the town planning scheme known as the Steve Tshwete Town Planning Scheme, 2004, for the rezoning of Portion 19 of Erf 1102, Middelburg situated at 46 Blackmore Street, from **“Residential 1”** to **“Residential 1” with amended coverage**.

Full particulars and plans may be inspected during normal office hours at the office of the Municipal Manager, Steve Tshwete Local Municipality, Cnr. Walter Sisulu and Wanderers Avenue, Middelburg, 1050, Tel: 013 2497000, for a period of 30 days from **13 March 2020** (last day for comments being 13 April 2020). Any person who cannot write may during office hours attend the Office of the Municipal Manager, where an official will assist that person to lodge comment.

Any objection/s or comments including the grounds for such objection/s or comments with full contact details, shall be made in writing to the Municipal Manager, PO Box 14, Middelburg 1050 within 30 days from **13 March 2020**.

Details of agent: Afriplan CC, 14 John Magagula Street, Middelburg 1050. Tel: 013 282 8035 Fax: 013 243 1706. E-mail: jaco@afriplan.com/vicky@afriplan.com

13–20

PROVINSIALE KENNISGEWING 44 VAN 2020

STEVE TSHWETE WYSIGINGSKEMA 809

KENNISGEWING VAN DIE AANSOEK OM DIE WYSIGING VAN DIE STEVE TSHWETE DORPSBEPLANNINGSKEMA, 2004, INGEVOLGE ARTIKELS 62(1) EN 94(1)(A) VAN DIE STEVE TSHWETE RUIMTELIKE BEPLANNING EN GRONDGEBRUIKSBESTUURSVERORDENING, 2016

Ek, Jaco Peter le Roux, van Afriplan CC synde die gemagtigde agent van die eienaar van **Gedeelte 19 van Erf 1102, Middelburg** gee hiermee ingevolge Artikel 94(1) van die Steve Tshwete Ruimtelike Beplanning en Grondgebruiksbestuursverordening, 2016, kennis dat ons by Steve Tshwete Plaaslike Munisipaliteit aansoek gedoen het vir die wysiging van die Steve Tshwete Dorpsbeplanningskema, 2004, deur die hersonering van Gedeelte 19 van Erf 1102, Middelburg, geleë te Blackmorestraat 46 vanaf **“Residensiël 1”** na **“Residensiël 1” met gewysigde dekking**.

Besonderhede van die aansoek lê ter insae gedurende gewone kantoorure by die kantoor van die Munisipale Bestuurder, Steve Tshwete Plaaslike Munisipaliteit, Munisipale gebou, Wandererslaan, Middelburg, 1050, vir 'n tydperk van 30 dae vanaf **13 Maart 2020** (laaste datum vir kommentare 13 April 2020). Enige persoon wat nie kan skryf nie sal tydens kantoor-ure deur 'n amptenaar by die Kantoor van die Munisipale Bestuurder bygestaan word om kommentaar in te dien.

Besware of vertoë ten opsigte van die aansoek moet binne 'n tydperk van 30 dae vanaf **13 Maart 2020**, skriftelik by of tot die Munisipale Bestuurder by bovermelde adres of by Posbus 14, Middelburg, 1050, ingedien of gerig word.

Besonderhede van die agent: Afriplan CC, John Magagulastraat 14, Middelburg 1050. Tel: 013 282 8035 Faks: 013 243 1706. E-pos

13–20

PROVINCIAL NOTICE 45 OF 2020

STEVE TSHWETE AMENDMENT SCHEME 806

NOTICE OF APPLICATION FOR THE AMENDMENT OF THE STEVE TSHWETE TOWN PLANNING SCHEME, 2004, IN TERMS OF SECTIONS 62(1) AND 94(1) (A) OF THE STEVE TSHWETE SPATIAL PLANNING AND LAND USE MANAGEMENT BYLAW, 2016.

I, Jaco Peter le Roux, of Afriplan CC being the authorized agent of the owner of **Portion 1 of Erf 76, Middelburg** hereby give notice in terms of Section 94(1)(a) of the Steve Tshwete Spatial Planning and Land Use Management Bylaw, 2016, that I have applied to the Steve Tshwete Local Municipality for the amendment of the town planning scheme known as the Steve Tshwete Town Planning Scheme, 2004, for the rezoning of Portion 1 of Erf 76, Middelburg situated at 12 SADC Street, from “**Business 4**” to “**Institutional**”.

Full particulars and plans may be inspected during normal office hours at the office of the Municipal Manager, Steve Tshwete Local Municipality, Cnr. Walter Sisulu and Wanderers Avenue, Middelburg, 1050, Tel: 013 2497000, for a period of 30 days from **13 March 2020** (last day for comments being 13 April 2020). Any person who cannot write may during office hours attend the Office of the Municipal Manager, where an official will assist that person to lodge comment.

Any objection/s or comments including the grounds for such objection/s or comments with full contact details, shall be made in writing to the Municipal Manager, PO Box 14, Middelburg 1050 within 30 days from **13 March 2020**.

Details of agent: Afriplan CC, 14 John Magagula Street, Middelburg 1050. Tel: 013 282 8035 Fax: 013 243 1706. E-mail: jaco@afriplan.com/vicky@afriplan.com

13-20

PROVINSIALE KENNISGEWING 45 VAN 2020

STEVE TSHWETE WYSIGINGSKEMA 806

KENNISGEWING VAN DIE AANSOEK OM DIE WYSIGING VAN DIE STEVE TSHWETE DORPSBEPLANNINGSKEMA, 2004, INGEVOLGE ARTIKELS 62(1) EN 94(1)(A) VAN DIE STEVE TSHWETE RUIMTELIKE BEPLANNING EN GRONDGEBRUIKSBESTUURSVERORDENING, 2016

Ek, Jaco Peter le Roux, van Afriplan CC synde die gemagtigde agent van die eienaar van **Gedeelte 1 van Erf 76, Middelburg** gee hiermee ingevolge Artikel 94(1) van die Steve Tshwete Ruimtelike Beplanning en Grondgebruiksbestuursverordening, 2016, kennis dat ons by Steve Tshwete Plaaslike Munisipaliteit aansoek gedoen het vir die wysiging van die Steve Tshwete Dorpsbeplanningskema, 2004, deur die hersonering van Gedeelte 1 van Erf 76, Middelburg, geleë te SADC-straat 12 vanaf “**Besigheid 4**” na “**Inrigting**”.

Besonderhede van die aansoek lê ter insae gedurende gewone kantoorure by die kantoor van die Munisipale Bestuurder, Steve Tshwete Plaaslike Munisipaliteit, Munisipale gebou, Wandererslaan, Middelburg, 1050, vir 'n tydperk van 30 dae vanaf **13 Maart 2020** (laaste datum vir kommentare 13 April 2020). Enige persoon wat nie kan skryf nie sal tydens kantoor-ure deur 'n amptenaar by die Kantoor van die Munisipale Bestuurder bygestaan word om kommentaar in te dien.

Besware of verhoë ten opsigte van die aansoek moet binne 'n tydperk van 30 dae vanaf **13 Maart 2020**, skriftelik by of tot die Munisipale Bestuurder by bovermelde adres of by Posbus 14, Middelburg, 1050, ingedien of gerig word.

Besonderhede van die agent: Afriplan CC, John Magagulastraat 14, Middelburg 1050. Tel: 013 282 8035 Faks: 013 243 1706. E-pos: : jaco@afriplan.com/vicky@afriplan.com

13-20

PROVINCIAL NOTICE 46 OF 2020
MPUMALANGA PROVINCIAL GOVERNMENT
DEPARTMENT OF PUBLIC WORKS, ROADS AND TRANSPORT
ROADS ORDINANCE, 1957 (NO 22 OF 1957)

DEVIATION, DECLARATION AND CLOSURE OF PROVINCIAL ROAD D253.

I, Gillion Pudumo Mashego, in my capacity as Member of the Executive Council responsible for Public Works, Roads and Transport, Mpumalanga Provincial Government, hereby, in terms of Sections 5 and 29 of the Roads Ordinance, 1957 (Ordinance NO. 22 of 1957) read with Section 4 of the Promotion of Administrative Justice Act, 2000 (Act NO. 3 of 2000) and Regulation 18 of the Regulations on Fair Administrative Procedures issued in terms of the Promotion of Administrative Justice Act, deviate, declare and close portions of Provincial roads D253, as indicated in the Schedule hereto.

This Notice shall come into effect on completion of the portion of Provincial Road D253.

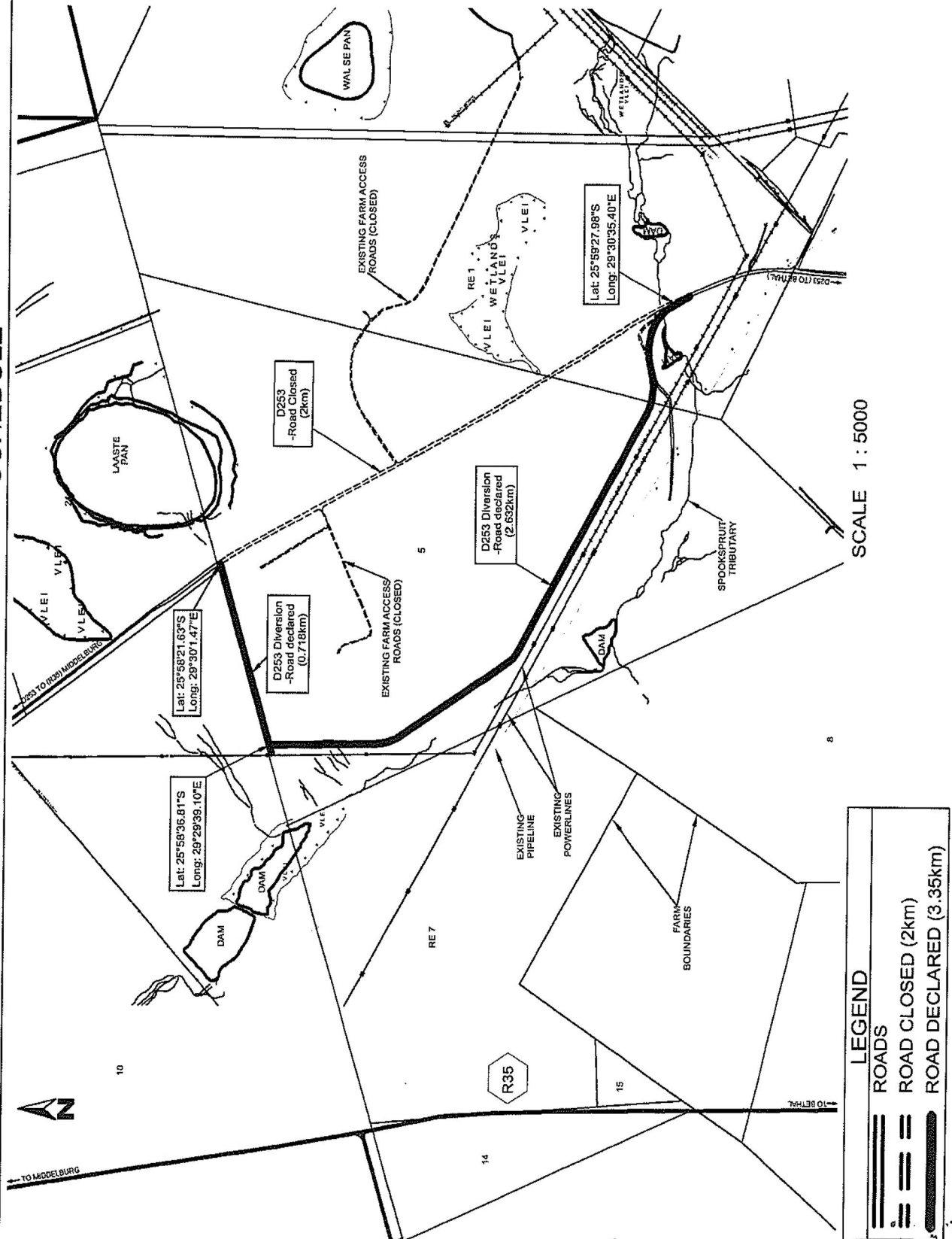


GP Mashego.

Member of the Executive Council

Public Works, Roads and Transport: Mpumalanga

SCHEDULE



PROVINCIAL NOTICE 47 OF 2020**MPUMALANGA GAMBLING ACT, 1995 (ACT NO.5 OF 1995) AS AMENDED
APPLICATION FOR SITE OPERATOR LICENCE**

Notice is hereby given that the following Applicant intends on submitting application(s) to the Mpumalanga Economic Regulator (MER) for Site Operators Licences:

1. Hoofkantoor Middelburg (Pty) Ltd trading as Hoofkantoor at Shop 1904, Marenata Centre, Corner of Church and Cowen Ntuli Streets, Middelburg, Steve Tshwete, Nkangala, 1050.
2. K2019224183 (Pty) Ltd trading as G Bets Ermelo at 13 Murray Street, Ermelo, Mpumalanga.
3. K2019224183 (Pty) Ltd trading as G Bets Elukwatini at Stand No 2319, Main Road, Elukwatini, Mpumalanga.
4. K2019224183 (Pty) Ltd trading as G Bets Bethal at 48 Mafrayi Dlodlu Street, Bethal, Mpumalanga.
5. Dumisani Mokoena trading as Rock City Bar Lounge at Stand 287, Marite Bushbuckridge, Ehlanzeni, 1242.
6. Lakeside Complex (Pty) Ltd, Registration Number:2018/258449/07 trading as Lakeside Pub and Restaurant at 7778 Section G, Tweefontein, Kwamhlanga, Mpumalanga, 1022.

Notice is hereby given that the following Applicant intends on amending the transfer application(s) to the Mpumalanga Economic Regulator (MER) for Site Operators Licences

1. Amendment of the transfer application for site operator license for Arezki Messaoudi trading as Bafana Bafana Tavern at Portion 1 of Erf 114, 57 Jabulani Selepe Street, Bethal, Govan Mbeki Municipality, Gert Sibande. The application is being re-submitted as a new application.

These applications will be open for public inspection and objection at the offices of the MER from 13 March 2020

Attention is directed to the provisions of Section 26 of the Mpumalanga Gambling Act, 1995 that makes provision for the lodging of written objections or representations in respect of the applications. Such objections or representations should be lodged with the Chief Executive Officer, Mpumalanga Economic Regular, Private Bag X9908, White River, Mpumalanga, 1240, within one month from 13 March 2020.

LOCAL AUTHORITY NOTICES • PLAASLIKE OWERHEIDS KENNISGEWINGS

LOCAL AUTHORITY NOTICE 14 OF 2020

MSUKALIGWA LOCAL MUNICIPALITY NOTICE OF REZONING APPLICATION IN TERMS OF SECTION 66(1) OF THE SPATIAL PLANNING AND LAND USE MANAGEMENT (SPLUM) BY-LAW FOR MSUKALIGWA LOCAL MUNICIPALITY, 2016

We, **The Town Planning Hub cc**, being the authorised agent/applicant of the owners of **Erf 2973, Kwazanele Extension 6** hereby give notice in terms of Section 98 of the Msukaligwa Local Municipality Spatial Planning and Land Use Management By-law, 2016 that we have applied to the Municipality for the amendment of the Ermelo Town Planning Scheme, 1982 in operation, for the rezoning in terms of Section 66(1) of the Msukaligwa Local Municipality Spatial Planning and Land Use Management By-law, 2016 for a portion of the property described above. The property is situated on the eastern side of the R36, approximately 3,5km south of Breyten.

1. The Rezoning of PART abcdUVa of the above-mentioned erf is from "Special" to "Business 1".
2. The rezoning of PART PQRSTdcbP of the above-mentioned erf from "Special" to "Residential 3" with a density of 80 units per hectare including offices and industrial buildings as primary rights.

Any objection(s) and/or comment(s), including the grounds for such objection(s) and/or comment(s) with full contact details, without which the Municipality cannot correspond with the person or body submitting the objection(s) and/or comment(s), shall be lodged with, or made in writing to: The Municipal Manager, Civic Centre, Taute Street, Ermelo, PO Box 48, Ermelo 2350 within a period of 28 days from 6 March 2020.

Full particulars and plans (if any) may be inspected during normal office hours at the Municipal offices as set out above, for a period of 28 days from the date of first publication of the notice in the Provincial Gazette, Highvelder and Tribune newspapers.

Address of Municipal offices: The Municipal Manager, Civic Centre, Taute Street, Ermelo.

Closing date of any objection(s) and/or comment(s): 3 April 2020

Address of authorised agent: The Town Planning Hub cc; PO Box 11437, Silver Lakes, 0054; Lombardy Corporate Park, Block B, Unit M, Cole Road, Shere, 0084. Tel: (012) 809 2229. Ref: TPH19327 and TPH19329

Dates on which notice will be published: 6 and 13 March 2020.

6-13

PLAASLIKE OWERHEID KENNISGEWING 14 VAN 2020

MSUKALIGWA PLAASLIKE MUNISIPALITEIT KENNISGEWING VIR DIE AANSOEK OM HERSONERING IN TERME VAN ARTIKEL 66(1) VAN DIE MSUKALIGWA PLAASLIKE MUNISIPALITEIT SE RUIMTELIKE BEPLANNING EN GRONDGEBRUIKSBESTUUR BY-WET, 2016

Ons, **The Town Planning Hub cc**, synde die gemagtigde agent/aansoeker van die eienaars van die **Erf 2973, Kwazanele Uitbreiding 6** gee hiermee ingevolge Artikel 98 van die Msukaligwa Plaaslike Munisipaliteit se Ruimtelike Beplanning en Grondgebruiksbestuur By-wet, 2016 kennis dat ons by die Msukaligwa Plaaslike Munisipaliteit aansoek gedoen het om die wysiging van die Ermelo Dorpsbeplanningskema, 1982, in werking, deur die hersonering in terme van Artikel 66(1) van die Msukaligwa Plaaslike Munisipaliteit se Ruimtelike Beplanning en Grondgebruiksbestuur By-wet, 2016 van 'n gedeelte van die eiendom hier bo beskryf. Die eiendom is aan die oostekant van die R36, ongeveer 3,5 km suid van Breyten, geleë.

1. Die hersonering van DEEL abcdUVa van bogenoemde erf is van "Spesiaal" na "Besigheid 1".
2. Die hersonering van DEEL PQRSTdcbP van bogenoemde erf van "Spesiaal" na "Residensieel 3" met 'n digtheid van 80 eenhede per hektaar, insluitend kantore en nywerheidsgeboue as primêre reg.

Enige besware en/of kommentare wat duidelik die gronde van die beswaar en die persoon(ne) se regte uiteensit en aandui hoe hulle belange deur die aansoek(e) geaffekteer gaan word, asook die persoon(ne) se volle kontakbesonderhede, waar sonder die Munisipaliteit nie met die persoon(ne) kan korrespondeer nie, moet binne 'n tydperk van 28 dae vanaf **6 Maart 2020**, skriftelik by of tot die Munisipale Bestuurder, Burgersentrum, Tautestraat, Ermelo, Posbus 48, Ermelo 2350, ingedien word.

Volledige besonderhede en planne (as daar is) kan gedurende gewone kantoorure geïnspekteer word by die Munisipale kantore soos hierbo uiteengesit, vir 'n tydperk van 28 dae vanaf die datum van eerste publikasie van die kennisgewing in die Provinsiale Koerant, Hoevelder en Tribune koerante.

Adres van Munisipale Kantore: Munisipale Bestuurder, Burgersentrum, Tautestraat, Ermelo

Sluitingsdatum vir enige besware en/of kommentaar: 3 April 2020

Adres van agent : The Town Planning Hub cc; Posbus 11437, Silver Lakes, 0054; Lombardy Corporate Park, Blok B, Eenheid 13, Colestraat, Shere, 0084. Tel: (012) 809 2229. Verw: TPH19327 en TPH19329

Datums waarop die advertensie geplaas word: 6 en 13 Maart 2020

6-13

Printed by and obtainable from the Government Printer, Bosman Street, Private Bag X85, Pretoria, 0001.
Contact Centre Tel: 012-748 6200. eMail: info.egazette@gpw.gov.za
Publications: Tel: (012) 748 6053, 748 6061, 748 6065

Also available at the **Provincial Legislature: Mpumalanga**, Private Bag X11289, Room 114, Civic Centre Building,
Nel Street, Nelspruit, 1200. Tel. (01311) 5-2133.