



Government Gazette Staatskoerant

REPUBLIC OF SOUTH AFRICA
REPUBLIEK VAN SUID AFRIKA

Vol. 694

21

April
April

2023

No. 48453



N.B. The Government Printing Works will not be held responsible for the quality of "Hard Copies" or "Electronic Files" submitted for publication purposes

ISSN 1682-5845



9 771682 584003

AIDS HELPLINE: 0800-0123-22 Prevention is the cure

IMPORTANT NOTICE:

THE GOVERNMENT PRINTING WORKS WILL NOT BE HELD RESPONSIBLE FOR ANY ERRORS THAT MIGHT OCCUR DUE TO THE SUBMISSION OF INCOMPLETE / INCORRECT / ILLEGIBLE COPY.

No FUTURE QUERIES WILL BE HANDLED IN CONNECTION WITH THE ABOVE.

Contents

<i>No.</i>	<i>Gazette No.</i>	<i>Page No.</i>
------------	------------------------	---------------------

GOVERNMENT NOTICES • GOEWERMENTSKENNISGEWINGS**Transport, Department of/ Vervoer, Departement van**

3332	South African National Roads Agency Limited and the National Roads Act (7/1998): Declaration Amendment of National Road R24 Section 1: Amendment of Declaration No. 979 of 2021	48453	3
3332	Suid-Afrikaanse Nasionale Padagentskap Beperk en Nasionale Paaie Wet (7/1998): Verklaring Wysiging van Nasionale Pad R24 Seksie 1: Wysiging van Verklaring No. 979 van 2021.....	48453	4

GOVERNMENT NOTICES • GOEWERMENTSKENNISGEWINGS

DEPARTMENT OF TRANSPORT

NO. 3332


21 April 2023

**THE SOUTH AFRICAN NATIONAL ROADS
AGENCY SOC LIMITED**Registration No: 1998/009584/30

DECLARATION AMENDMENT OF NATIONAL ROAD R24 SECTION 1

AMENDMENT OF DECLARATION No. 979 OF 2021.

By virtue of section 40(1)(b) of The South African National Roads Agency Limited and National Roads Act 1998 (Act No. 7 of 1998), I hereby amend Declaration No. 979 of 2021 by substituting it in its entirety with the accompanying sheets 1 to 22 of Plan No. P1224/22.

(National Road R24 Section 1: Rustenburg – North West / Gauteng Provincial Border)

MINISTER OF TRANSPORT

DEPARTEMENT VAN VERVOER

NO. 3332

21 April 2023

**DIE SUID-AFRIKAANSE NASIONALE
PADAGENTSKAP MSB BEPERK**

Registrasie No: 1998/009584/30

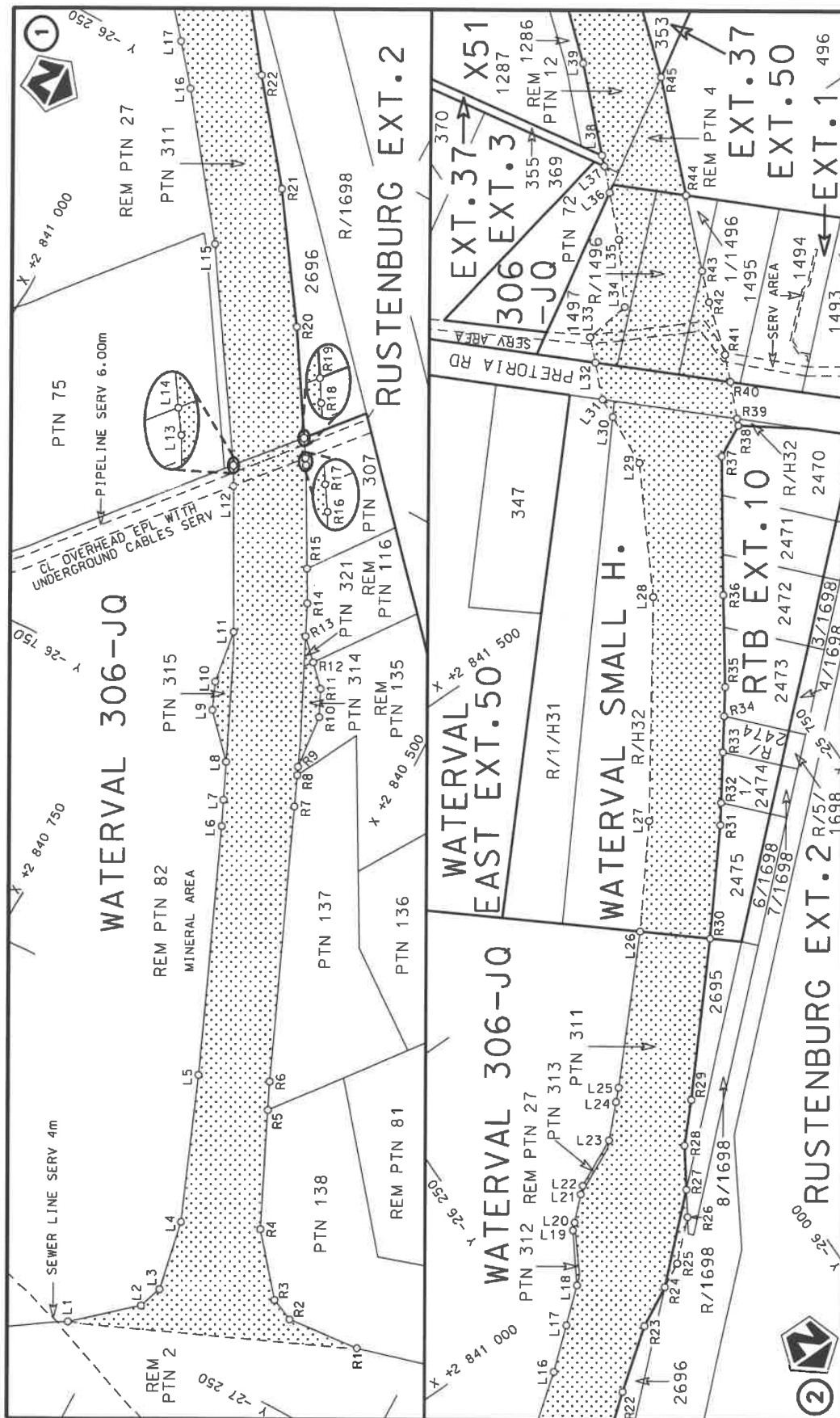
VERKLARING WYSIGING VAN NASIONALE PAD R24 SEKSIE 1

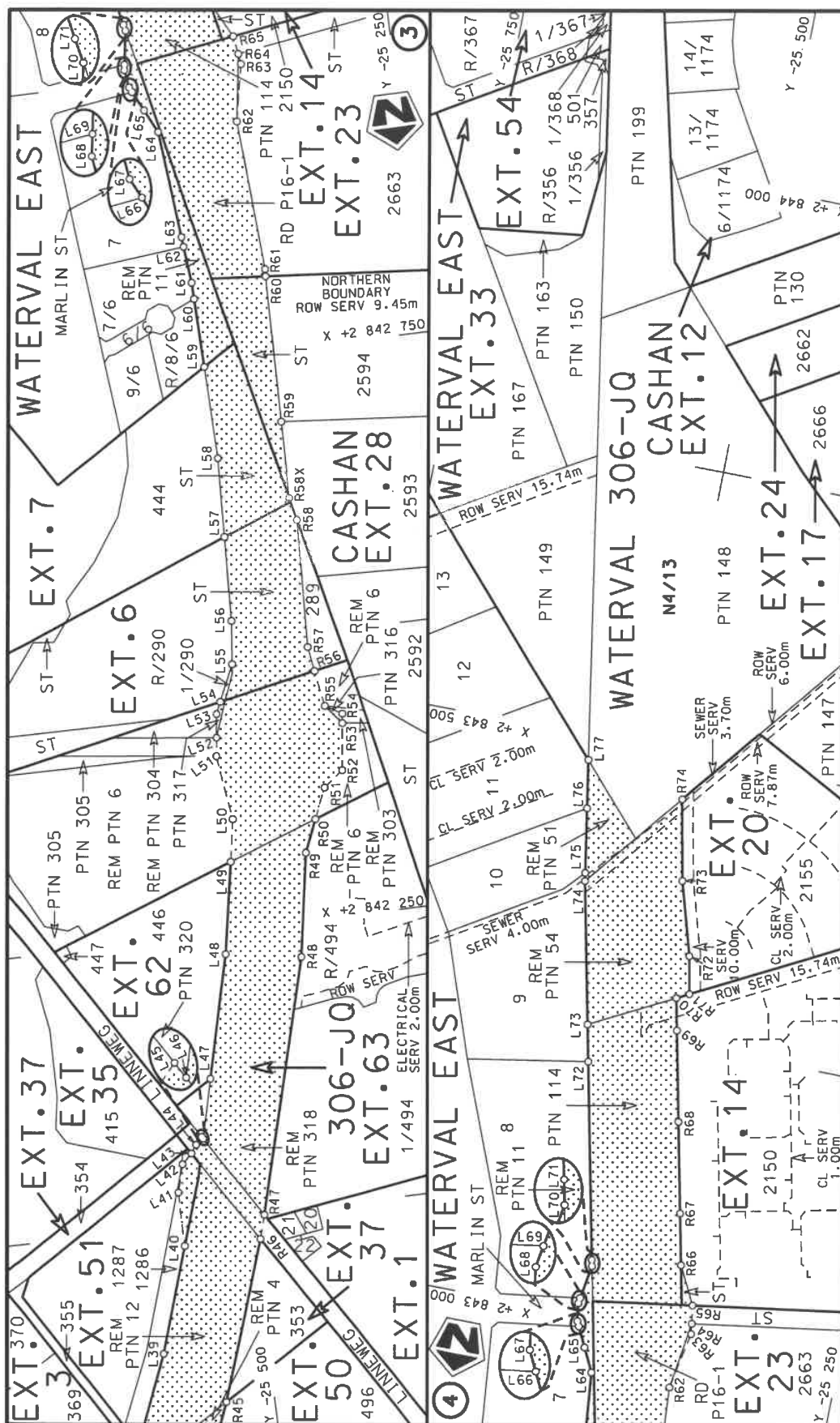
WYSIGING VAN VERKLARING No. 979 VAN 2021.

Kragtens Artikel 40(1)(b) van die Suid Afrikaanse Nasionale Padagentskap Beperk en Nasionale Paaie Wet 1998 (Wet No.7 van 1998), wysig ek hiermee Verklaring No. 979 van 2021 deur dit in sy geheel te vervang met bygaande velle 1 tot 22 van Plan No. P1224/22.

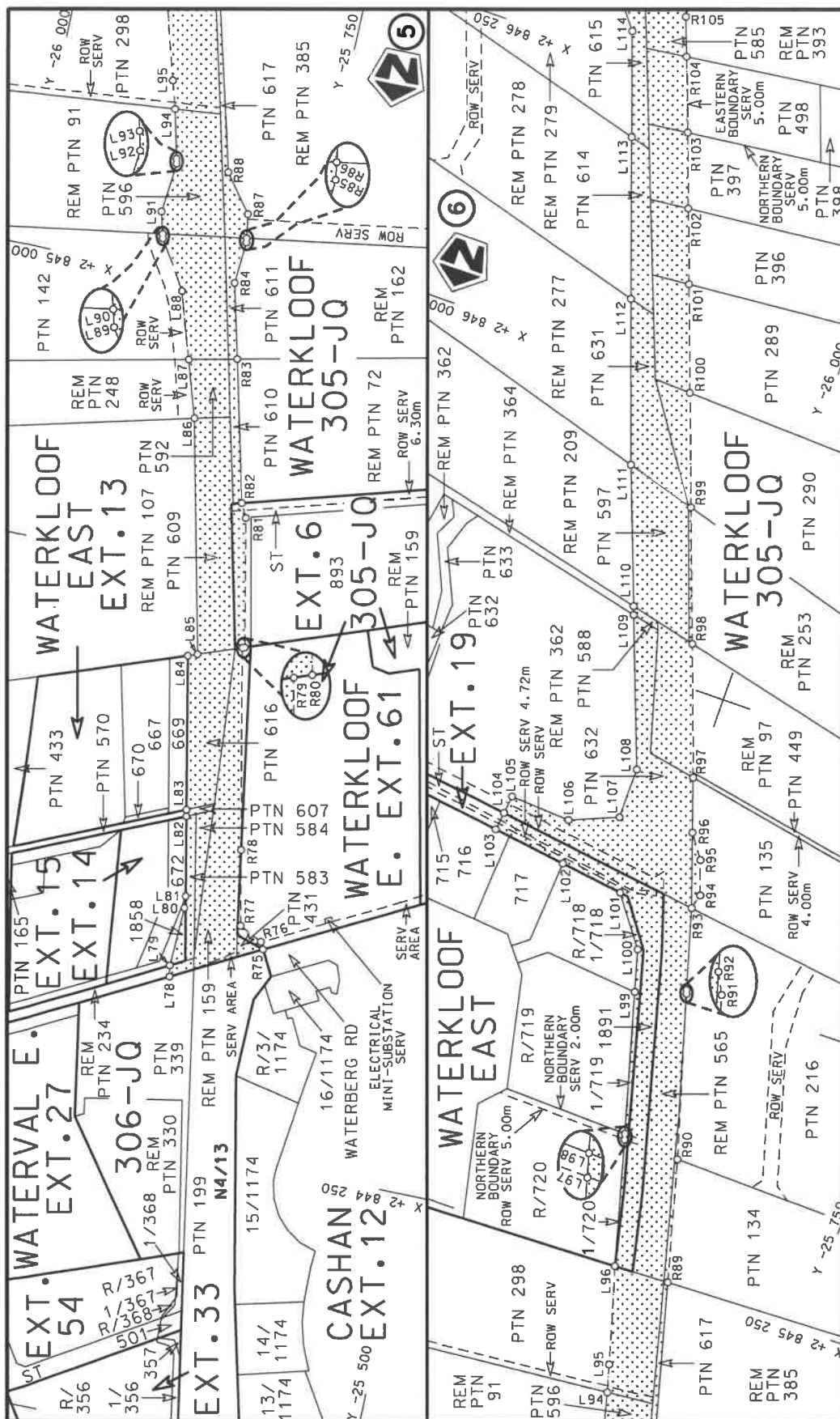
(Nasionale Pad R24 Seksie 1: Rustenburg – Noordwes / Gauteng Provinsiale Grens)


MINISTER VAN VERVOER

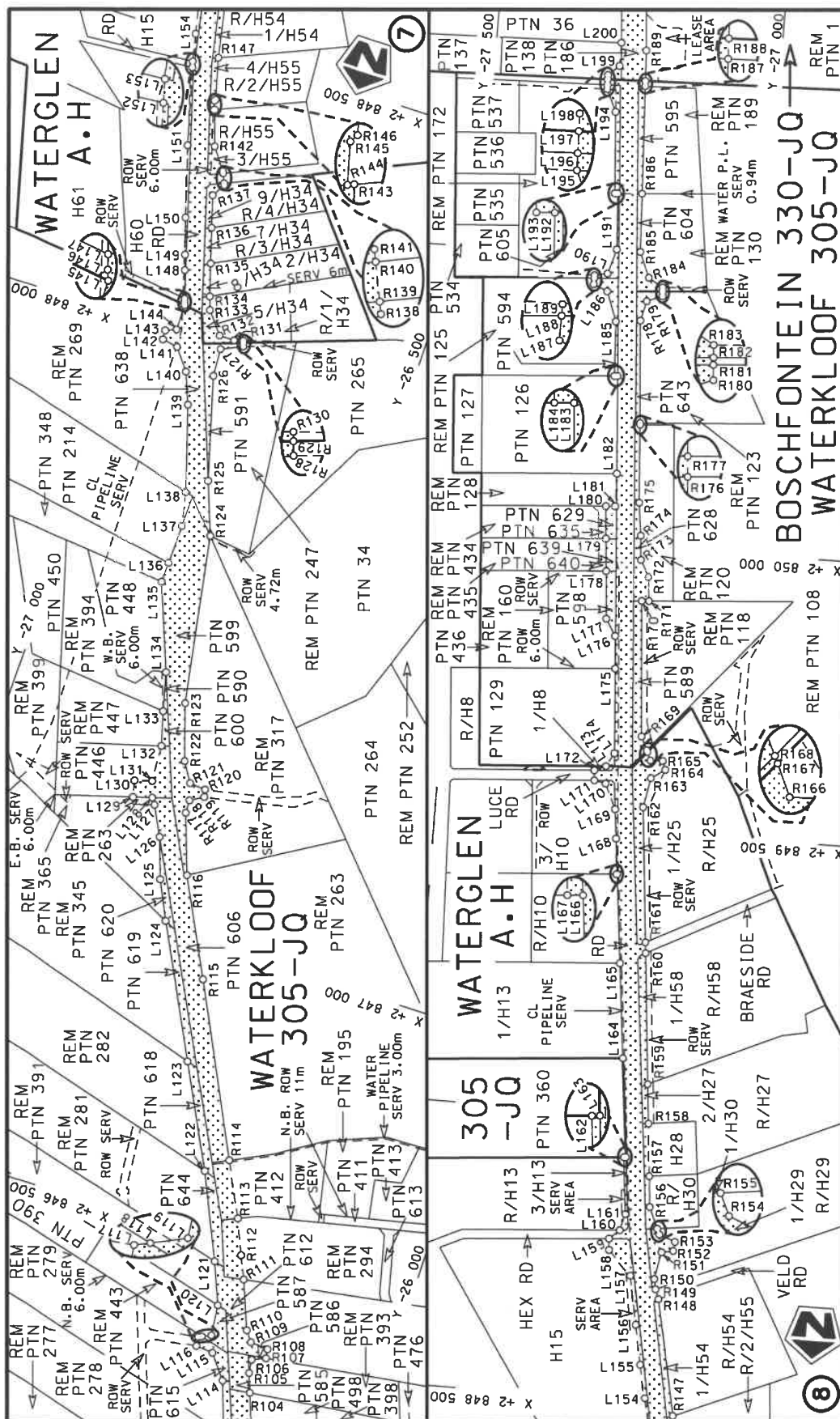




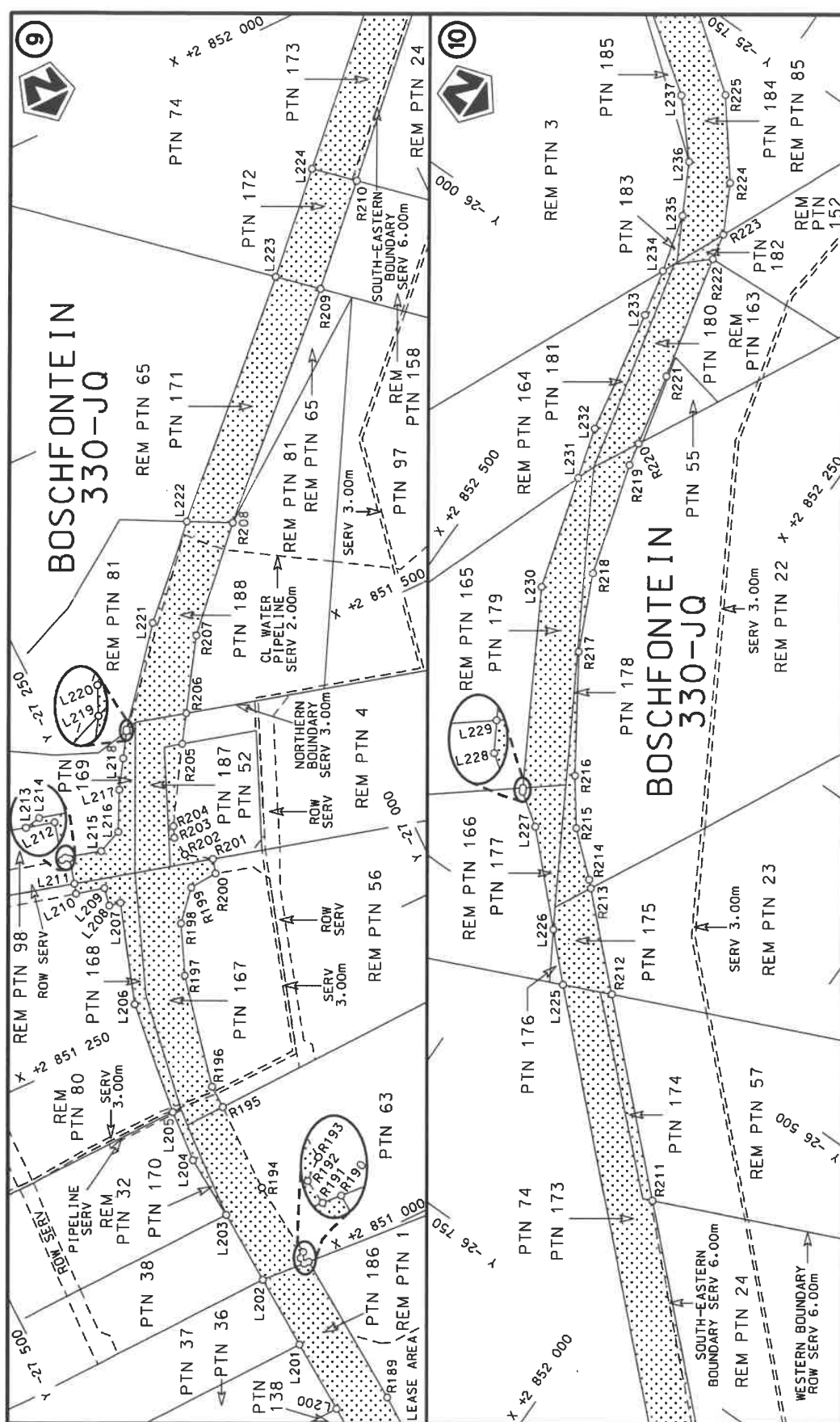
Die Suid Afrikaanse Nasionale Padagentskap MSB Bpk The South African National Roads Agency SOC Ltd	Die figuur getoon The figure shown	steldie padreserwe voor van 'n gedeelte represents the road reserve of a portion van Nasionale Roete R24 of National Route	Vel Sheet 2 of 22 Plan P1224/22
---	---------------------------------------	---	---------------------------------------




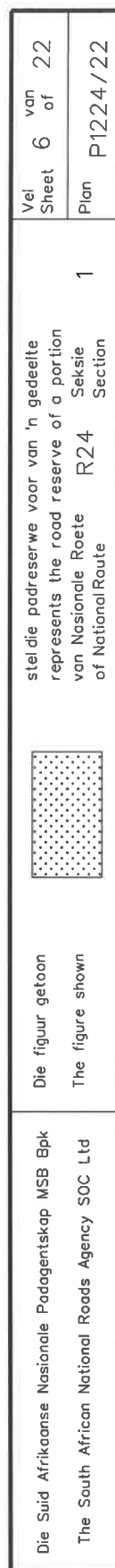
Die Suid Afrikaanse Nasionale Padagentskap MSB Bpk The South African National Roads Agency SOC Ltd	Die figuur getoon The figure shown	stel die padreserwe voor van 'n gedeelte represents the road reserve of a portion van Nasionale Roete R24 Seksie 1 of National Route	Vel Sheet 3 of 22 Plan P1224/22
---	---------------------------------------	---	---------------------------------------

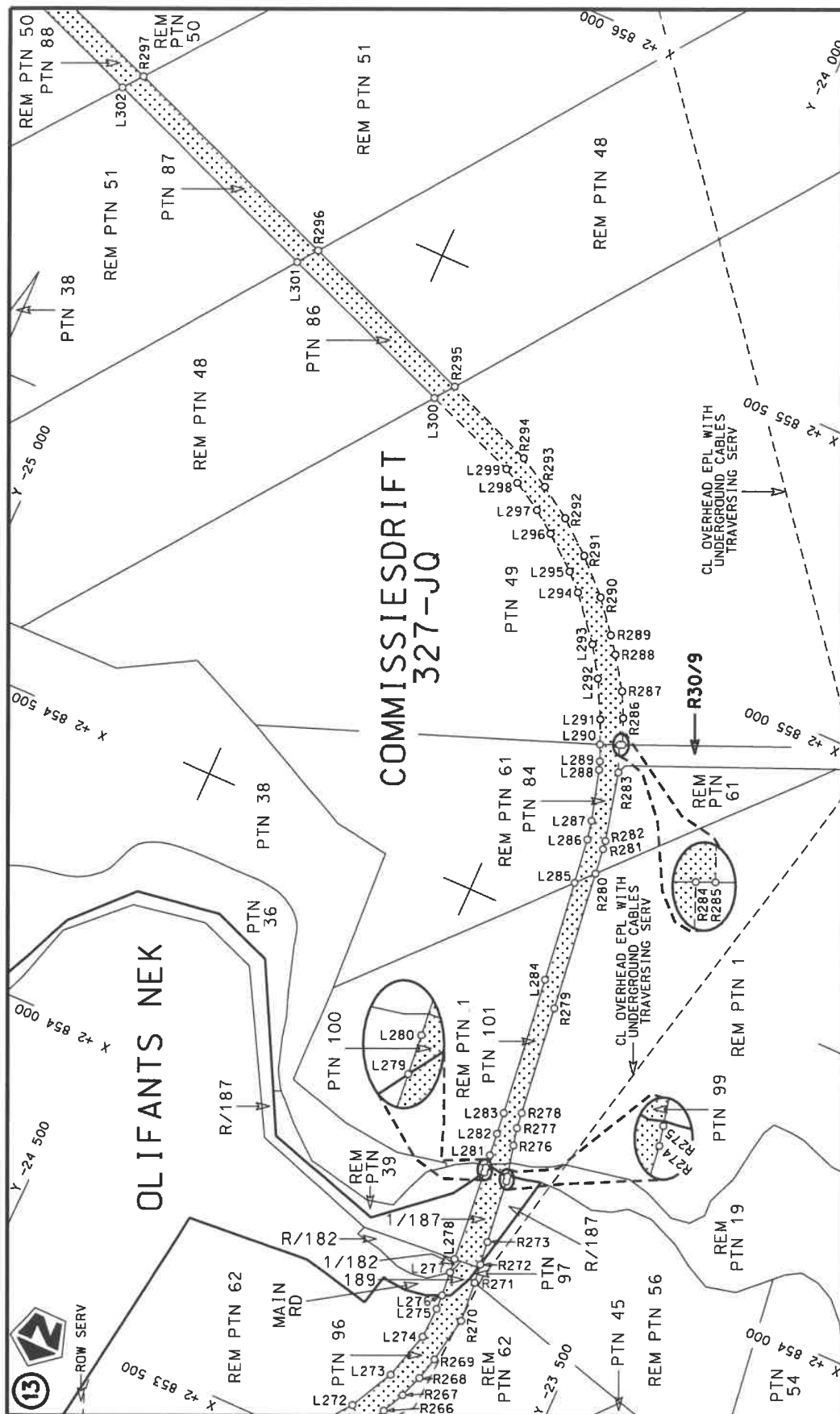


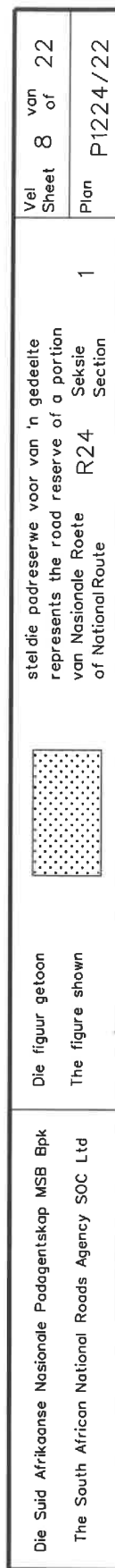
Die Suid Afrikaanse Nasionale Padagentskap MSB Bpk The South African National Roads Agency SOC Ltd	Die figuur getoon The figure shown	steldie padreserwe voor van 'n gedeelte represents the road reserve of a portion van Nasionale Raete of National Route	1 R24 Section	Vel Sheet 4 of 22	Plan P1224/22
---	---------------------------------------	---	---------------------	-------------------------	------------------

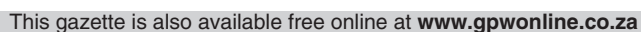



Die Suid Afrikaanse Nasionale Padagentskap MSB Bpk	Die figuur getoon		steldie padreserwe voor van 'n gedeelte represents the road reserve of a portion van Nasionale Roete R24 of National Route	1	Vel Sheet	5 of	22 22
The South African National Roads Agency SOC Ltd	The figure shown				Plan	P1224/22	

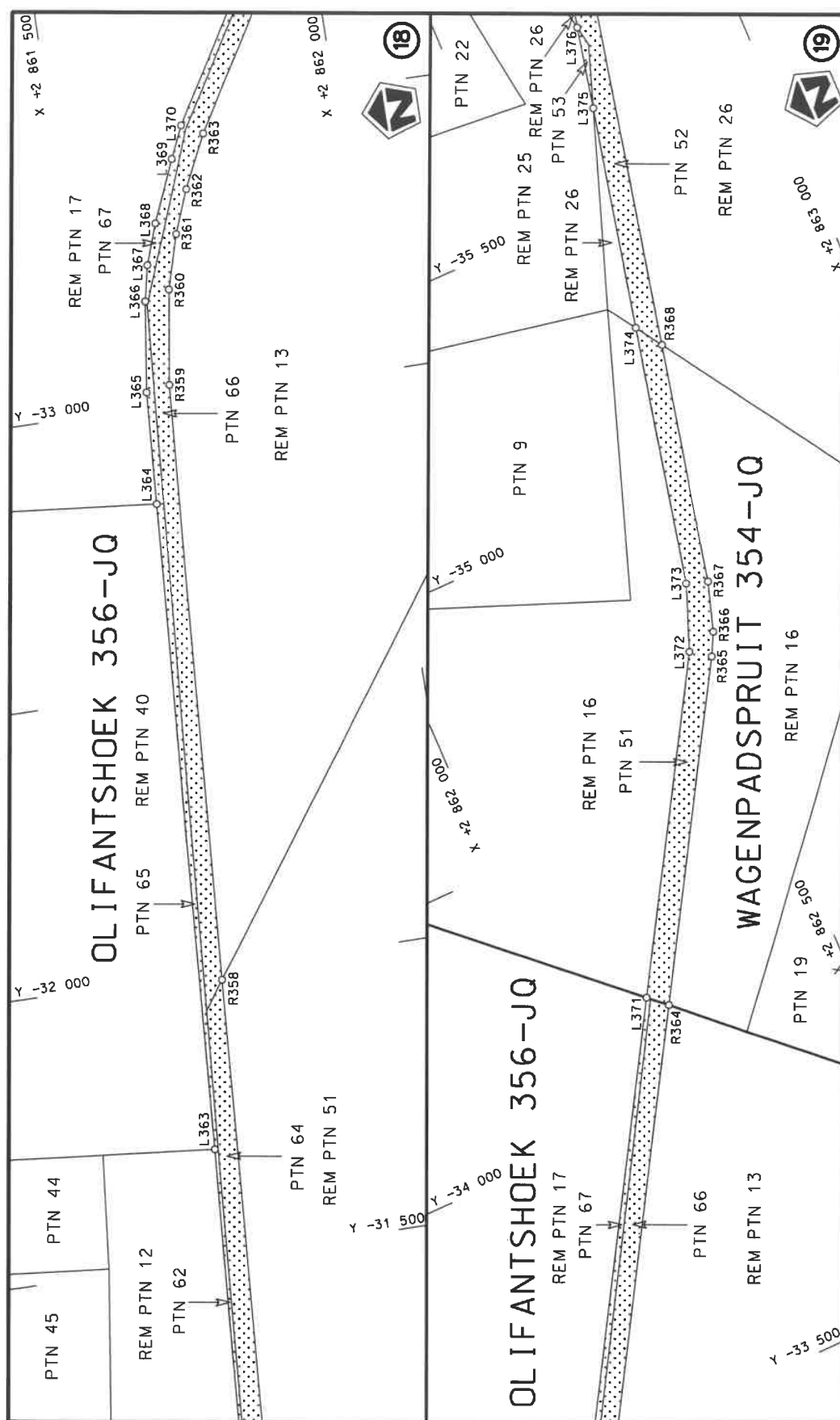




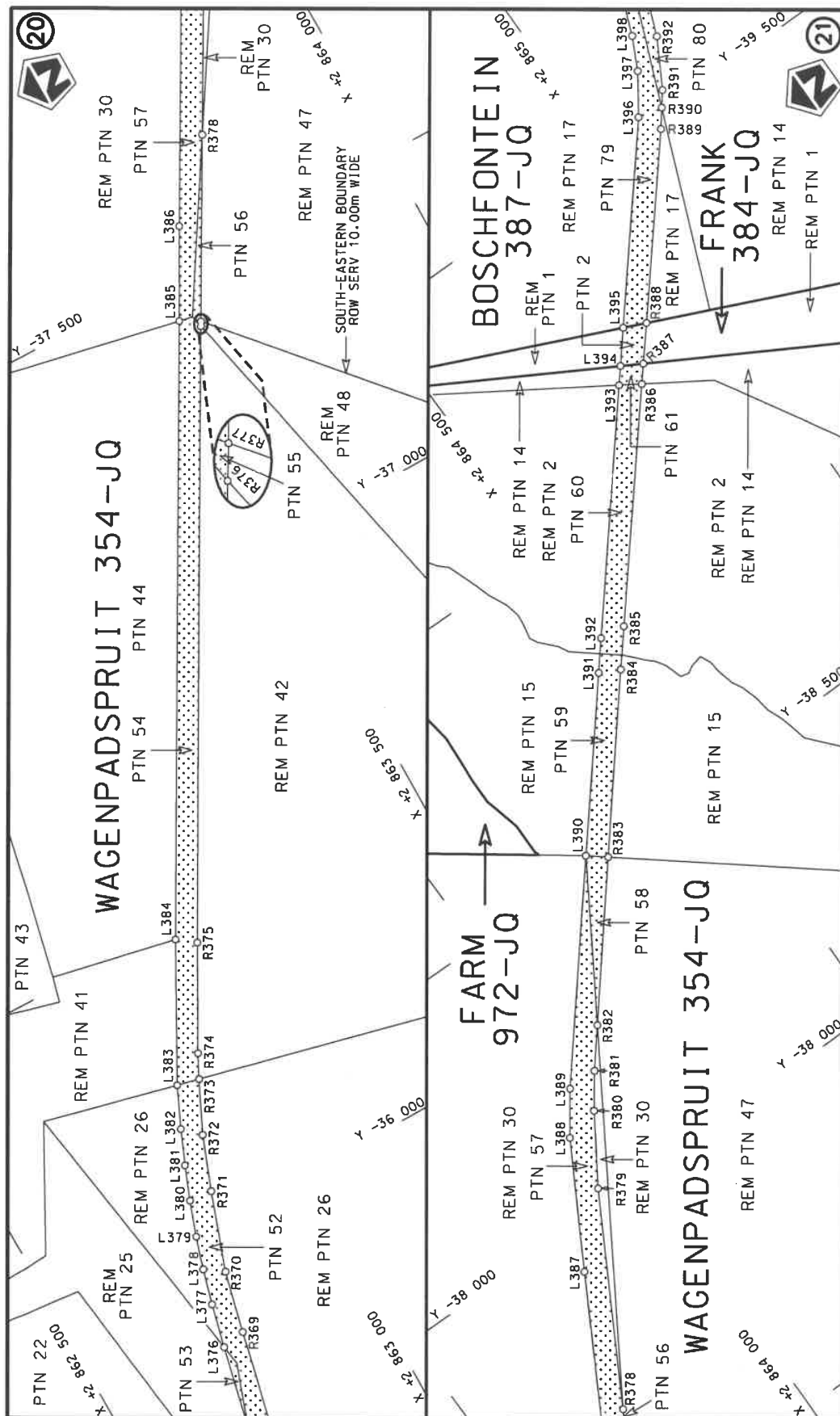





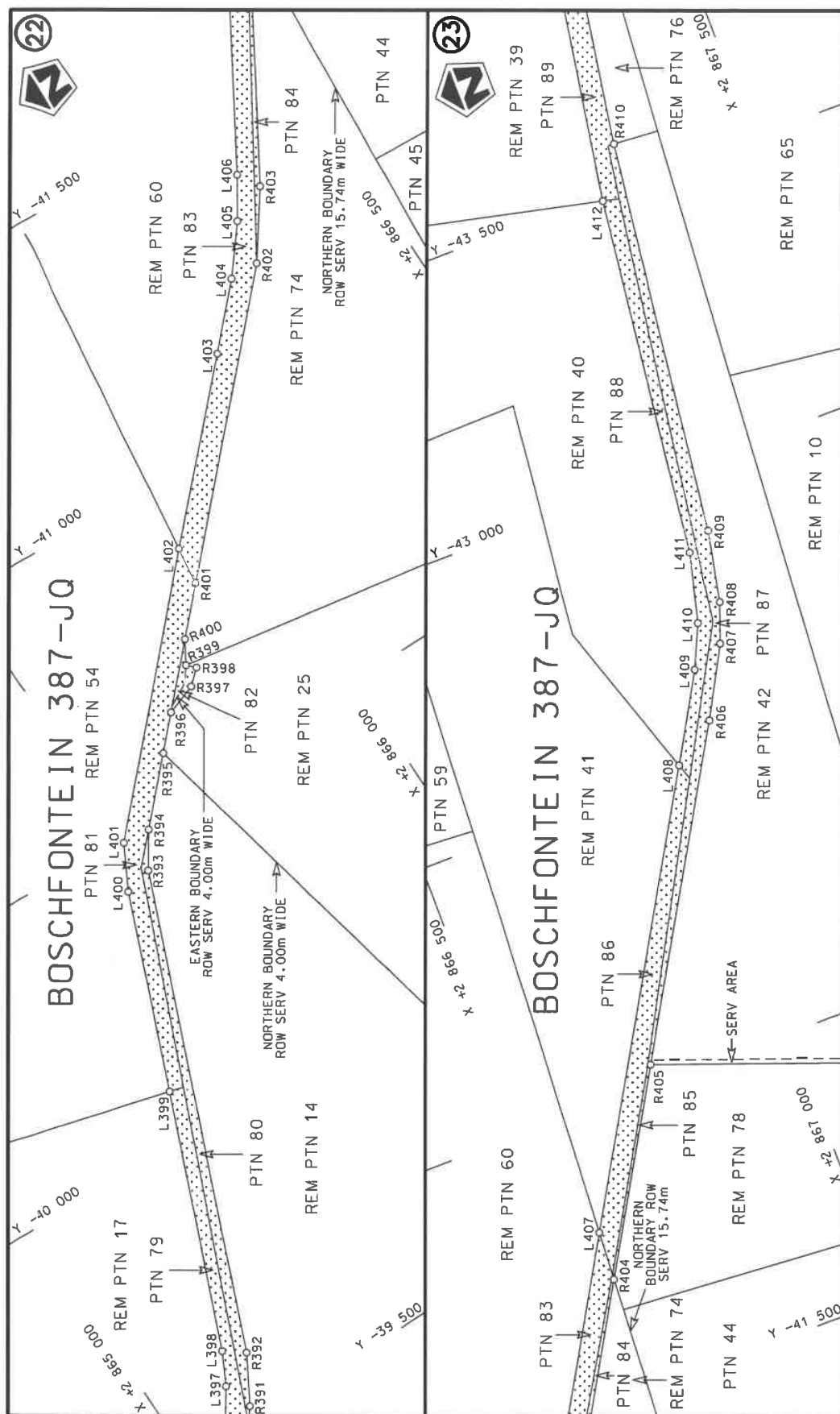
Die Suid Afrikaanse Nasionale Padagentskap MSB Bpk	Die figuur getoon		steldie padreserwe voor van 'n gedeelte represents the road reserve of a portion van Nasionale Roete R24 of National Route	1	Vel Sheet	van of	22
The South African National Roads Agency SOC Ltd	The figure shown				Plan	P1224/22	



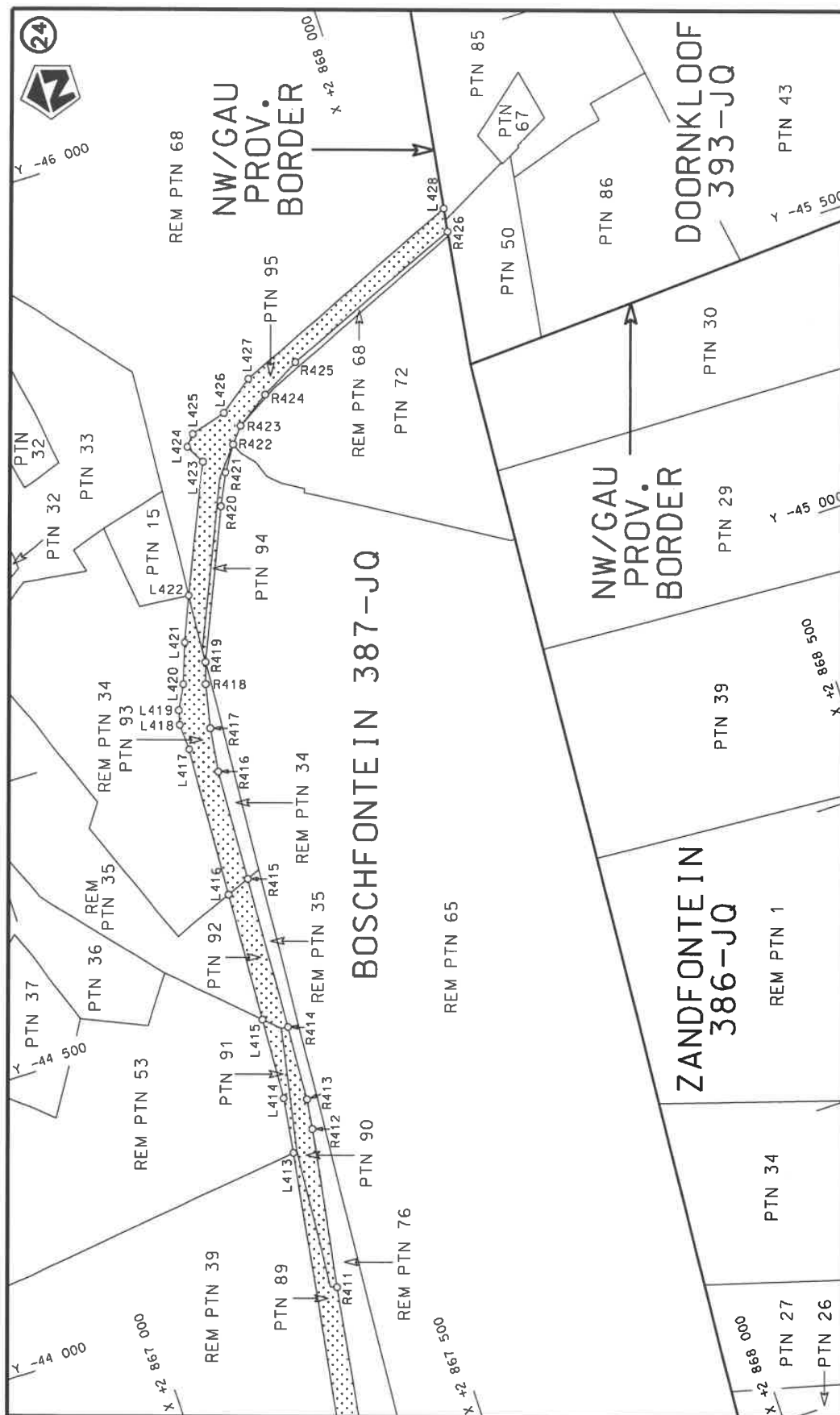
Die Suid Afrikaanse Nasionale Padagentskap MSB Bpk The South African National Roads Agency SOC Ltd	Die figuur getoon The figure shown	<div data-bbox="1289 1084 1375 1227" data-label="Image"> </div>	stel die padreserwe voor van 'n gedeelte represents the road reserve of a portion van Nasionale Roete R24 Seksie of National Route 1	Vel Sheet 10 of 22 Plan P1224/22
---	---------------------------------------	---	--	--



Die Suid Afrikaanse Nasionale Padagentskap MSB Bpk The South African National Roads Agency SOC Ltd	Die figuur getoon The figure shown		steldie padreserwe voor van 'n gedeelte represents the road reserve of a portion van Nasionale Roete R24 Sekse of National Route Section	1	Plan P1224/22	Vel Sheet 11 of 22	van of 22
---	---------------------------------------	---	---	---	---------------	--------------------------------	-----------------



Die Suid Afrikaanse Nasionale Padagentskap MSB Bpk The South African National Roads Agency SOC Ltd	Die figuur getoon The figure shown	<div data-bbox="1289 1079 1372 1227" data-label="Image"> </div>	steldie padreserwe voor van 'n gedeelte represents the road reserve of a portion von Nasionale Roete R24 Seksie of National Route Section	Vel Sheet 12 of 22 Plan P1224/22
---	---------------------------------------	---	--	--



Die Suid Afrikaanse Nasionale Padagentskap MSB Bpk The South African National Roads Agency SOC Ltd	Die figuur getoon The figure shown	stelt die padreserwe voor van 'n gedeelte represents the road reserve of a portion van Nasionale Roete R24 Seksie 1 of National Route Section	1	Val Sheet 13 of 22 Plan P1224/22
---	---------------------------------------	--	---	--

PADRESERWE KOÖRDINATE / ROAD RESERVE CO-ORDINATES									
LINKERKANT/LEFT HAND SIDE					REGTERKANT/RIGHT HAND SIDE				
	Y		X	WG 27°		Y		X	
L1	-27 269.11	2	840	535.35	R1	-27 169.13	2	840	300.98
L2	-27 226.12	2	840	485.15	R2	-27 174.90	2	840	364.85
L3	-27 205.67	2	840	477.43	R3	-27 166.32	2	840	384.73
L4	-27 144.77	2	840	489.11	R4	-27 117.27	2	840	424.88
L5	-27 023.66	2	840	536.51	R5	-27 022.05	2	840	468.98
L6	-26 821.37	2	840	622.97	R6	-26 999.35	2	840	479.49
L7	-26 800.32	2	840	632.65	R7	-26 775.98	2	840	575.58
L8	-26 769.75	2	840	646.69	R8	-26 750.56	2	840	586.52
L9	-26 735.16	2	840	678.97	R9	-26 743.78	2	840	589.45
L10	-26 712.07	2	840	688.60	R10	-26 696.60	2	840	594.40
L11	-26 666.01	2	840	695.33	R11	-26 674.06	2	840	605.22
L12	-26 553.20	2	840	756.74	R12	-26 656.66	2	840	621.99
L13	-26 537.66	2	840	765.30	R13	-26 639.53	2	840	638.50
L14	-26 537.04	2	840	765.73	R14	-26 613.35	2	840	651.09
L15	-26 374.06	2	840	872.38	R15	-26 586.59	2	840	665.93
L16	-26 264.50	2	840	956.39	R16	-26 506.98	2	840	710.08
L17	-26 232.19	2	840	983.86	R17	-26 501.94	2	840	713.41
L18	-26 204.45	2	841	007.45	R18	-26 487.19	2	840	722.70
L19	-26 180.01	2	841	049.20	R19	-26 486.60	2	840	723.06
L20	-26 174.84	2	841	054.02	R20	-26 403.93	2	840	775.07
L21	-26 156.21	2	841	071.38	R21	-26 303.93	2	840	844.42
L22	-26 150.65	2	841	076.56	R22	-26 224.72	2	840	907.63
L23	-26 108.92	2	841	096.27	R23	-26 176.13	2	840	944.46
L24	-26 084.70	2	841	120.58	R24	-26 141.82	2	840	962.46
L25	-26 075.65	2	841	129.67	R25	-26 120.37	2	840	973.74
L26	-25 982.17	2	841	232.07	R26	-26 090.30	2	841	001.57
L27	-25 920.00	2	841	307.87	R27	-26 077.42	2	841	022.05
L28	-25 805.29	2	841	468.27	R28	-26 056.82	2	841	054.82
L29	-25 748.50	2	841	572.15	R29	-26 029.03	2	841	084.47
L30	-25 745.11	2	841	618.94	R30	-25 934.86	2	841	191.97
L31	-25 743.83	2	841	636.64	R31	-25 870.49	2	841	268.96
L32	-25 730.64	2	841	667.01	R32	-25 858.77	2	841	284.75
L33	-25 721.64	2	841	687.70	R33	-25 832.22	2	841	320.54
L34	-25 681.69	2	841	692.56	R34	-25 813.29	2	841	346.03
L35	-25 652.44	2	841	744.10	R35	-25 797.96	2	841	366.68
L36	-25 636.05	2	841	783.00	R36	-25 753.37	2	841	434.43
L37	-25 626.82	2	841	804.51	R37	-25 685.56	2	841	535.74
L38	-25 623.15	2	841	813.63	R38	-25 658.21	2	841	549.81
L39	-25 591.06	2	841	889.53	R39	-25 655.64	2	841	555.53
L40	-25 560.45	2	841	980.89	R40	-25 642.19	2	841	585.39
L41	-25 560.13	2	842	027.92	R41	-25 632.35	2	841	607.53
L42	-25 553.28	2	842	051.99	R42	-25 618.12	2	841	653.74
L43	-25 544.33	2	842	060.56	R43	-25 607.91	2	841	680.07
L44	-25 539.34	2	842	067.47	R44	-25 581.92	2	841	742.80
L45	-25 533.69	2	842	073.74	R45	-25 541.76	2	841	840.73
L46	-25 532.61	2	842	071.97	R46	-25 494.30	2	841	978.78
L47	-25 519.58	2	842	123.35	R47	-25 488.25	2	841	999.30
L48	-25 492.29	2	842	230.15	R48	-25 427.64	2	842	219.42
L49	-25 477.80	2	842	309.98	R49	-25 412.04	2	842	309.55
L50	-25 471.12	2	842	346.99	R50	-25 400.29	2	842	337.84
L51	-25 478.09	2	842	403.76	R51	-25 388.50	2	842	364.65
					Vel 14 Van 22 P1224/22 Sheet of				

PADRESERWE KOÖRDINATE / ROAD RESERVE CO-ORDINATES									
LINKERKANT/LEFT HAND SIDE					REGTERKANT/RIGHT HAND SIDE				
	Y		X	WG 27°		Y		X	
L52	-25 476.24	2	842	419.65	R52	-25 371.56	2	842	377.84
L53	-25 473.53	2	842	440.30	R53	-25 366.41	2	842	418.61
L54	-25 468.93	2	842	450.51	R54	-25 365.44	2	842	426.82
L55	-25 454.72	2	842	482.01	R55	-25 379.61	2	842	435.60
L56	-25 450.45	2	842	519.76	R56	-25 384.63	2	842	467.09
L57	-25 447.18	2	842	593.68	R57	-25 387.76	2	842	488.72
L58	-25 444.11	2	842	662.90	R58	-25 382.80	2	842	600.81
L59	-25 446.17	2	842	743.72	R58x	-25 387.09	2	842	620.67
L60	-25 447.51	2	842	803.91	R59	-25 385.82	2	842	687.68
L61	-25 447.84	2	842	818.25	R60	-25 383.38	2	842	815.67
L62	-25 450.95	2	842	850.31	R61	-25 382.96	2	842	822.09
L63	-25 451.78	2	842	858.83	R62	-25 391.39	2	842	953.05
L64	-25 460.89	2	842	952.70	R63	-25 381.64	2	843	002.55
L65	-25 470.90	2	842	973.08	R64	-25 382.78	2	843	011.63
L66	-25 479.31	2	842	990.20	R65	-25 385.20	2	843	027.51
L67	-25 481.47	2	842	994.60	R66	-25 402.05	2	843	060.05
L68	-25 483.71	2	843	010.11	R67	-25 411.55	2	843	104.38
L69	-25 482.95	2	843	014.93	R68	-25 428.36	2	843	182.77
L70	-25 478.32	2	843	044.12	R69	-25 445.16	2	843	261.16
L71	-25 479.49	2	843	049.56	R70	-25 451.16	2	843	289.02
L72	-25 515.99	2	843	219.44	R71	-25 440.51	2	843	294.62
L73	-25 522.84	2	843	251.31	R72	-25 447.02	2	843	327.40
L74	-25 549.32	2	843	374.44	R73	-25 465.76	2	843	390.95
L75	-25 550.50	2	843	381.46	R74	-25 479.74	2	843	461.25
L76	-25 559.91	2	843	437.47	R75	-25 666.53	2	844	435.76
L77	-25 566.97	2	843	479.44	R76	-25 669.76	2	844	441.95
L78	-25 743.16	2	844	395.42	R77	-25 689.98	2	844	452.10
L79	-25 744.87	2	844	405.21	R78	-25 703.11	2	844	517.52
L80	-25 742.34	2	844	457.39	R79	-25 738.09	2	844	691.82
L81	-25 743.11	2	844	467.63	R80	-25 736.19	2	844	692.52
L82	-25 756.82	2	844	536.62	R81	-25 758.38	2	844	804.13
L83	-25 757.95	2	844	542.28	R82	-25 764.55	2	844	816.26
L84	-25 784.26	2	844	675.23	R83	-25 794.42	2	844	939.10
L85	-25 775.79	2	844	678.27	R84	-25 810.39	2	845	003.86
L86	-25 820.81	2	844	880.66	R85	-25 807.38	2	845	040.60
L87	-25 836.46	2	844	930.06	R86	-25 807.97	2	845	044.44
L88	-25 854.66	2	844	987.74	R87	-25 811.18	2	845	065.31
L89	-25 880.89	2	845	029.31	R88	-25 835.74	2	845	097.59
L90	-25 881.88	2	845	033.12	R89	-25 875.98	2	845	250.72
L91	-25 886.77	2	845	052.04	R90	-25 903.56	2	845	355.41
L92	-25 882.52	2	845	095.63	R91	-25 944.19	2	845	495.03
L93	-25 883.52	2	845	099.78	R92	-25 945.28	2	845	498.49
L94	-25 893.70	2	845	142.16	R93	-25 964.89	2	845	567.68
L95	-25 900.66	2	845	166.40	R94	-25 961.87	2	845	581.02
L96	-25 924.33	2	845	248.86	R95	-25 972.01	2	845	610.52
L97	-25 952.80	2	845	356.33	R96	-25 986.20	2	845	630.53
L98	-25 954.24	2	845	361.54	R97	-26 001.75	2	845	676.41
L99	-25 987.42	2	845	481.75	R98	-26 041.40	2	845	787.24
L100	-25 997.38	2	845	517.81	R99	-26 082.43	2	845	899.93
L101	-26 028.37	2	845	559.89	R100	-26 116.88	2	845	994.52
L102	-26 084.18	2	845	567.35	R101	-26 149.36	2	846	083.92
					<div> <div>Vel</div> <div>15</div> <div>Van</div> <div>22</div> <div>Sheet</div> <div>of</div> <div>P1224/22</div> </div>				

PADRESERWE KOÖRDINATE / ROAD RESERVE CO-ORDINATES									
LINKERKANT/LEFT HAND SIDE					REGTERKANT/RIGHT HAND SIDE				
	Y	X	WG 27°			Y	X		
L103	-26 149.87	2 845 576.12		R102	-26 172.01	2 846 146.28			
L104	-26 147.83	2 845 592.13		R103	-26 194.67	2 846 208.68			
L105	-26 145.81	2 845 608.15		R104	-26 217.88	2 846 270.93			
L106	-26 092.25	2 845 605.07		R105	-26 230.08	2 846 303.66			
L107	-26 050.81	2 845 622.30		R106	-26 232.76	2 846 327.29			
L108	-26 050.55	2 845 666.89		R107	-26 209.33	2 846 337.80			
L109	-26 098.13	2 845 794.27		R108	-26 211.63	2 846 353.60			
L110	-26 100.84	2 845 801.49		R109	-26 243.74	2 846 356.01			
L111	-26 144.27	2 845 917.87		R110	-26 257.42	2 846 373.67			
L112	-26 192.78	2 846 055.12		R111	-26 290.25	2 846 456.58			
L113	-26 239.43	2 846 188.81		R112	-26 307.65	2 846 496.87			
L114	-26 269.93	2 846 276.43		R113	-26 333.11	2 846 555.39			
L115	-26 302.32	2 846 317.19		R114	-26 379.08	2 846 647.49			
L116	-26 332.82	2 846 319.84		R115	-26 522.40	2 846 934.67			
L117	-26 335.12	2 846 335.67		R116	-26 606.41	2 847 099.82			
L118	-26 328.74	2 846 338.63		R117	-26 642.65	2 847 203.57			
L119	-26 313.74	2 846 345.84		R118	-26 643.29	2 847 226.40			
L120	-26 319.01	2 846 399.39		R119	-26 620.55	2 847 240.16			
L121	-26 348.49	2 846 470.93		R120	-26 623.28	2 847 252.91			
L122	-26 414.50	2 846 615.83		R121	-26 651.54	2 847 255.36			
L123	-26 503.22	2 846 789.30		R122	-26 673.08	2 847 289.22			
L124	-26 616.90	2 847 012.02		R123	-26 703.91	2 847 386.40			
L125	-26 648.51	2 847 078.50		R124	-26 754.34	2 847 679.58			
L126	-26 672.76	2 847 149.10		R125	-26 788.23	2 847 770.34			
L127	-26 698.87	2 847 199.78		R126	-26 837.44	2 847 948.07			
L128	-26 706.72	2 847 210.50		R127	-26 839.64	2 847 996.59			
L129	-26 738.67	2 847 201.16		R128	-26 803.40	2 848 013.35			
L130	-26 745.20	2 847 230.53		R129	-26 805.47	2 848 019.39			
L131	-26 715.88	2 847 239.18		R130	-26 806.79	2 848 023.25			
L132	-26 719.86	2 847 301.99		R131	-26 822.14	2 848 018.64			
L133	-26 736.43	2 847 360.90		R132	-26 848.86	2 848 018.78			
L134	-26 753.19	2 847 427.56		R133	-26 879.33	2 848 055.67			
L135	-26 810.16	2 847 576.40		R134	-26 887.19	2 848 078.30			
L136	-26 809.16	2 847 611.65		R135	-26 903.85	2 848 133.32			
L137	-26 807.17	2 847 680.85		R136	-26 922.05	2 848 193.46			
L138	-26 819.35	2 847 739.50		R137	-26 938.13	2 848 247.97			
L139	-26 863.90	2 847 885.97		R138	-26 923.76	2 848 270.84			
L140	-26 885.49	2 847 940.07		R139	-26 925.28	2 848 274.30			
L141	-26 914.30	2 847 976.16		R140	-26 932.41	2 848 290.21			
L142	-26 941.63	2 847 981.15		R141	-26 933.91	2 848 293.59			
L143	-26 942.78	2 847 997.25		R142	-26 961.55	2 848 330.39			
L144	-26 924.63	2 848 005.03		R143	-26 981.44	2 848 391.39			
L145	-26 924.39	2 848 049.51		R144	-26 983.30	2 848 390.60			
L146	-26 926.10	2 848 054.17		R145	-26 987.26	2 848 405.99			
L147	-26 928.09	2 848 060.67		R146	-26 985.82	2 848 408.42			
L148	-26 943.25	2 848 108.29		R147	-27 004.08	2 848 479.52			
L149	-26 951.39	2 848 133.95		R148	-27 044.48	2 848 682.46			
L150	-26 971.02	2 848 195.87		R149	-27 050.97	2 848 699.16			
L151	-27 007.40	2 848 317.22		R150	-27 054.50	2 848 716.92			
L152	-27 042.46	2 848 449.20		R151	-27 045.60	2 848 764.60			
L153	-27 045.15	2 848 459.35		R152	-27 025.57	2 848 768.62			
					Vel Sheet	16	Van of	22	P1224/22

PADRESERWE KOÖRDINATE / ROAD RESERVE CO-ORDINATES									
LINKERKANT/LEFT HAND SIDE					REGTERKANT/RIGHT HAND SIDE				
	Y	X	WG 27°			Y	X		
L154	-27 055.53	2 848 506.91		R153	-27 023.73	2 848 784.62			
L155	-27 068.22	2 848 565.02		R154	-27 051.72	2 848 795.49			
L156	-27 081.34	2 848 634.42		R155	-27 056.06	2 848 805.32			
L157	-27 097.44	2 848 719.57		R156	-27 072.16	2 848 842.14			
L158	-27 137.72	2 848 761.63		R157	-27 077.26	2 848 896.13			
L159	-27 139.22	2 848 781.53		R158	-27 085.68	2 848 988.13			
L160	-27 122.03	2 848 797.54		R159	-27 092.53	2 849 056.89			
L161	-27 114.48	2 848 826.34		R160	-27 113.95	2 849 286.18			
L162	-27 124.42	2 848 925.86		R161	-27 115.90	2 849 305.09			
L163	-27 120.91	2 848 926.14		R162	-27 138.26	2 849 541.75			
L164	-27 139.64	2 849 099.02		R163	-27 128.31	2 849 593.80			
L165	-27 157.62	2 849 265.04		R164	-27 104.29	2 849 610.34			
L166	-27 174.51	2 849 420.55		R165	-27 109.89	2 849 625.35			
L167	-27 175.65	2 849 420.47		R166	-27 131.53	2 849 624.71			
L168	-27 181.29	2 849 483.01		R167	-27 137.97	2 849 639.08			
L169	-27 186.88	2 849 534.46		R168	-27 139.52	2 849 642.33			
L170	-27 206.74	2 849 578.16		R169	-27 150.58	2 849 665.62			
L171	-27 227.19	2 849 582.29		R170	-27 168.93	2 849 903.32			
L172	-27 228.44	2 849 599.76		R171	-27 156.15	2 849 904.23			
L173	-27 208.60	2 849 608.78		R172	-27 160.02	2 849 946.34			
L174	-27 195.65	2 849 632.35		R173	-27 176.05	2 849 975.26			
L175	-27 205.98	2 849 781.08		R174	-27 179.73	2 850 017.66			
L176	-27 210.68	2 849 838.27		R175	-27 187.19	2 850 075.09			
L177	-27 228.16	2 849 867.39		R176	-27 196.33	2 850 211.83			
L178	-27 235.07	2 849 950.79		R177	-27 196.59	2 850 214.77			
L179	-27 239.78	2 850 007.71		R178	-27 210.26	2 850 393.84			
L180	-27 244.49	2 850 064.63		R179	-27 201.58	2 850 428.60			
L181	-27 228.48	2 850 065.77		R180	-27 174.65	2 850 439.49			
L182	-27 230.18	2 850 122.91		R181	-27 175.18	2 850 447.12			
L183	-27 242.23	2 850 293.82		R182	-27 175.29	2 850 448.67			
L184	-27 247.94	2 850 293.40		R183	-27 175.70	2 850 454.92			
L185	-27 253.06	2 850 388.83		R184	-27 201.33	2 850 469.89			
L186	-27 271.95	2 850 440.46		R185	-27 219.93	2 850 513.71			
L187	-27 296.75	2 850 450.83		R186	-27 225.11	2 850 615.63			
L188	-27 296.66	2 850 461.69		R187	-27 234.62	2 850 803.58			
L189	-27 296.67	2 850 466.80		R188	-27 235.07	2 850 812.57			
L190	-27 273.84	2 850 471.37		R189	-27 237.77	2 850 865.93			
L191	-27 261.46	2 850 514.83		R190	-27 248.87	2 851 003.29			
L192	-27 267.45	2 850 612.67		R191	-27 253.23	2 851 003.60			
L193	-27 272.79	2 850 612.31		R192	-27 254.13	2 851 009.33			
L194	-27 282.75	2 850 754.62		R193	-27 249.61	2 851 013.13			
L195	-27 300.32	2 850 793.38		R194	-27 257.80	2 851 080.05			
L196	-27 300.56	2 850 800.90		R195	-27 258.79	2 851 158.33			
L197	-27 300.88	2 850 810.47		R196	-27 259.40	2 851 178.40			
L198	-27 301.12	2 850 818.22		R197	-27 239.11	2 851 277.01			
L199	-27 282.57	2 850 835.59		R198	-27 222.57	2 851 320.10			
L200	-27 282.46	2 850 876.01		R199	-27 200.52	2 851 344.48			
L201	-27 287.64	2 850 941.22		R200	-27 176.05	2 851 346.72			
L202	-27 292.29	2 851 006.37		R201	-27 172.61	2 851 359.16			
L203	-27 296.97	2 851 071.54		R202	-27 192.73	2 851 373.54			
L204	-27 302.26	2 851 127.26		R203	-27 195.44	2 851 390.69			
					Vel Sheet	17	Van of	22	P1224/22

PADRESERWE KOÖRDINATE / ROAD RESERVE CO-ORDINATES									
LINKERKANT/LEFT HAND SIDE					REGTERKANT/RIGHT HAND SIDE				
	Y	X	WG 27°			Y	X		
L205	-27 300.42	2 851 173.23		R204	-27 191.82	2 851 400.12			
L206	-27 289.64	2 851 273.02		R205	-27 153.57	2 851 462.35			
L207	-27 262.19	2 851 358.89		R206	-27 138.79	2 851 485.16			
L208	-27 272.25	2 851 360.97		R207	-27 101.10	2 851 543.20			
L209	-27 269.58	2 851 376.74		R208	-27 030.10	2 851 619.36			
L210	-27 293.94	2 851 382.87		R209	-26 872.41	2 851 771.99			
L211	-27 291.43	2 851 391.46		R210	-26 803.13	2 851 844.06			
L212	-27 285.97	2 851 413.24		R211	-26 635.56	2 852 018.34			
L213	-27 292.32	2 851 414.91		R212	-26 507.50	2 852 151.54			
L214	-27 288.78	2 851 415.63		R213	-26 441.51	2 852 219.99			
L215	-27 258.05	2 851 407.46		R214	-26 436.05	2 852 225.45			
L216	-27 237.16	2 851 416.12		R215	-26 405.50	2 852 260.94			
L217	-27 220.38	2 851 449.30		R216	-26 368.37	2 852 288.52			
L218	-27 205.43	2 851 472.84		R217	-26 277.14	2 852 348.67			
L219	-27 192.67	2 851 493.18		R218	-26 213.43	2 852 378.11			
L220	-27 191.99	2 851 494.74		R219	-26 117.27	2 852 407.07			
L221	-27 131.09	2 851 569.67		R220	-26 097.48	2 852 411.52			
L222	-27 065.95	2 851 637.50		R221	-26 035.20	2 852 425.93			
L223	-26 903.51	2 851 798.45		R222	-25 927.82	2 852 451.97			
L224	-26 834.16	2 851 870.37		R223	-25 904.82	2 852 456.59			
L225	-26 524.96	2 852 191.02		R224	-25 864.45	2 852 477.92			
L226	-26 489.96	2 852 225.85		R225	-25 803.85	2 852 525.87			
L227	-26 425.05	2 852 290.95		R226	-25 758.18	2 852 587.47			
L228	-26 406.36	2 852 317.55		R227	-25 746.34	2 852 599.77			
L229	-26 403.25	2 852 319.42		R228	-25 724.41	2 852 629.36			
L230	-26 249.17	2 852 408.12		R229	-25 712.28	2 852 643.66			
L231	-26 152.34	2 852 437.15		R230	-25 665.39	2 852 704.82			
L232	-26 108.54	2 852 450.30		R231	-25 648.68	2 852 723.16			
L233	-26 002.03	2 852 472.20		R232	-25 620.41	2 852 740.05			
L234	-25 961.51	2 852 481.79		R233	-25 587.65	2 852 751.34			
L235	-25 911.98	2 852 495.64		R234	-25 560.73	2 852 756.26			
L236	-25 870.12	2 852 518.29		R235	-25 538.32	2 852 758.03			
L237	-25 826.54	2 852 557.47		R236	-25 455.12	2 852 729.02			
L238	-25 750.40	2 852 665.57		R237	-25 384.52	2 852 709.30			
L239	-25 680.14	2 852 753.28		R238	-25 339.87	2 852 705.31			
L240	-25 635.96	2 852 789.19		R239	-25 295.96	2 852 709.25			
L241	-25 614.96	2 852 800.83		R240	-25 254.63	2 852 721.28			
L242	-25 600.03	2 852 803.90		R241	-25 215.65	2 852 741.30			
L243	-25 576.99	2 852 809.08		R242	-25 190.88	2 852 762.88			
L244	-25 531.93	2 852 801.52		R243	-25 162.74	2 852 787.23			
L245	-25 456.98	2 852 777.58		R244	-25 070.03	2 852 864.40			
L246	-25 382.03	2 852 753.63		R245	-25 023.90	2 852 902.79			
L247	-25 351.95	2 852 750.54		R246	-24 965.84	2 852 945.05			
L248	-25 308.00	2 852 753.14		R247	-24 899.84	2 852 979.06			
L249	-25 258.65	2 852 768.77		R248	-24 735.43	2 853 053.42			
L250	-25 223.90	2 852 788.62		R249	-24 348.36	2 853 229.93			
L251	-25 193.32	2 852 808.64		R250	-24 291.85	2 853 254.76			
L252	-25 151.29	2 852 845.98		R251	-24 241.13	2 853 261.58			
L253	-25 139.29	2 852 855.87		R252	-24 222.66	2 853 238.92			
L254	-25 095.71	2 852 891.82		R253	-24 192.33	2 853 263.50			
L255	-25 029.74	2 852 946.22		R254	-24 169.60	2 853 307.78			
Vel Sheet 18					Van of 22		P1224/22		

PADRESERWE KOÖRDINATE / ROAD RESERVE CO-ORDINATES									
LINKERKANT/LEFT HAND SIDE					REGTERKANT/RIGHT HAND SIDE				
	Y	X	WG 27°			Y	X		
L256	-24 907.47	2 853 020.46		R255	-24 143.62	2 853 318.95			
L257	-24 847.74	2 853 047.46		R256	-24 080.26	2 853 343.05			
L258	-24 747.78	2 853 092.64		R257	-24 058.91	2 853 353.15			
L259	-24 597.97	2 853 160.40		R258	-24 009.00	2 853 376.80			
L260	-24 449.85	2 853 227.39		R259	-23 963.14	2 853 398.83			
L261	-24 404.48	2 853 249.06		R260	-23 934.02	2 853 415.30			
L262	-24 356.36	2 853 271.11		R261	-23 898.12	2 853 440.44			
L263	-24 343.47	2 853 280.26		R262	-23 866.15	2 853 467.28			
L264	-24 303.30	2 853 306.01		R263	-23 836.23	2 853 496.63			
L265	-24 282.41	2 853 317.20		R264	-23 809.76	2 853 527.97			
L266	-24 280.80	2 853 327.84		R265	-23 785.27	2 853 562.64			
L267	-24 229.47	2 853 338.28		R266	-23 764.47	2 853 598.38			
L268	-24 176.29	2 853 345.77		R267	-23 745.67	2 853 636.85			
L269	-24 006.35	2 853 422.40		R268	-23 731.23	2 853 676.08			
L270	-23 926.42	2 853 470.01		R269	-23 720.46	2 853 716.78			
L271	-23 863.02	2 853 526.87		R270	-23 705.61	2 853 797.78			
L272	-23 818.47	2 853 585.03		R271	-23 710.98	2 853 868.90			
L273	-23 779.19	2 853 661.20		R272	-23 714.66	2 853 902.27			
L274	-23 755.69	2 853 744.68		R273	-23 719.44	2 853 943.65			
L275	-23 753.05	2 853 799.88		R274	-23 732.20	2 854 054.88			
L276	-23 753.87	2 853 825.55		R275	-23 734.18	2 854 063.66			
L277	-23 757.70	2 853 868.27		R276	-23 746.44	2 854 118.01			
L278	-23 759.90	2 853 892.73		R277	-23 753.25	2 854 148.25			
L279	-23 774.30	2 854 053.29		R278	-23 756.30	2 854 175.95			
L280	-23 775.21	2 854 062.25		R279	-23 778.06	2 854 368.46			
L281	-23 777.54	2 854 085.07		R280	-23 807.86	2 854 615.48			
L282	-23 781.60	2 854 124.87		R281	-23 813.26	2 854 660.28			
L283	-23 785.46	2 854 163.09		R282	-23 815.20	2 854 675.04			
L284	-23 813.38	2 854 407.96		R283	-23 843.70	2 854 795.11			
L285	-23 835.37	2 854 585.35		R284	-23 862.43	2 854 840.21			
L286	-23 845.19	2 854 664.54		R285	-23 857.00	2 854 842.54			
L287	-23 851.93	2 854 697.77		R286	-23 875.33	2 854 886.05			
L288	-23 876.71	2 854 785.36		R287	-23 896.26	2 854 928.45			
L289	-23 881.46	2 854 799.67		R288	-23 933.70	2 854 982.91			
L290	-23 893.34	2 854 827.05		R289	-23 954.77	2 855 011.04			
L291	-23 911.03	2 854 867.83		R290	-23 998.57	2 855 064.55			
L292	-23 944.51	2 854 931.92		R291	-24 054.91	2 855 119.90			
L293	-23 977.57	2 854 983.21		R292	-24 112.94	2 855 166.29			
L294	-24 038.72	2 855 056.04		R293	-24 168.19	2 855 202.43			
L295	-24 067.52	2 855 083.90		R294	-24 223.64	2 855 233.29			
L296	-24 125.46	2 855 131.14		R295	-24 385.97	2 855 298.85			
L297	-24 164.64	2 855 159.09		R296	-24 702.12	2 855 420.08			
L298	-24 216.24	2 855 188.87		R297	-25 108.15	2 855 574.04			
L299	-24 243.79	2 855 203.24		R298	-25 463.32	2 855 707.70			
L300	-24 410.54	2 855 266.06		R299	-25 537.83	2 855 740.39			
L301	-24 726.86	2 855 386.88		R300	-25 595.78	2 855 782.92			
L302	-25 133.72	2 855 541.48		R301	-25 656.51	2 855 860.96			
L303	-25 488.64	2 855 676.04		R302	-26 002.45	2 856 586.21			
L304	-25 557.41	2 855 706.45		R303	-26 082.31	2 856 771.92			
L305	-25 626.86	2 855 757.84		R304	-26 219.19	2 857 231.01			
L306	-25 693.11	2 855 844.82		R305	-26 367.50	2 857 734.23			
					Vel Sheet	19	Van of	22	P1224/22

PADRESERWE KOÖRDINATE / ROAD RESERVE CO-ORDINATES									
LINKERKANT/LEFT HAND SIDE					REGTERKANT/RIGHT HAND SIDE				
	Y	X	WG 27°			Y	X		
L307	-26 047.54	2 856 588.63		R306	-26 426.70	2 857 895.66			
L308	-26 113.94	2 856 735.64		R307	-26 673.34	2 858 328.48			
L309	-26 268.99	2 857 259.02		R308	-26 738.74	2 858 442.51			
L310	-26 378.06	2 857 632.03		R309	-26 769.70	2 858 491.77			
L311	-26 418.72	2 857 768.02		R310	-26 835.35	2 858 577.03			
L312	-26 478.11	2 857 909.27		R311	-26 917.13	2 858 659.20			
L313	-26 654.16	2 858 215.08		R312	-26 945.91	2 858 682.98			
L314	-26 782.03	2 858 437.61		R313	-26 988.81	2 858 718.41			
L315	-26 826.47	2 858 503.40		R314	-27 002.59	2 858 729.79			
L316	-26 877.09	2 858 563.95		R315	-27 089.04	2 858 823.44			
L317	-27 024.68	2 858 700.39		R316	-27 124.14	2 858 886.60			
L318	-27 069.62	2 858 741.94		R317	-27 141.78	2 858 935.51			
L319	-27 114.35	2 858 789.54		R318	-27 145.75	2 859 037.84			
L320	-27 161.28	2 858 871.41		R319	-27 145.23	2 859 269.84			
L321	-27 180.80	2 858 945.52		R320	-27 142.21	2 859 274.72			
L322	-27 185.77	2 859 036.07		R321	-27 148.47	2 859 292.87			
L323	-27 188.10	2 859 200.65		R322	-27 169.23	2 859 373.23			
L324	-27 188.63	2 859 236.41		R323	-27 235.31	2 859 470.30			
L325	-27 197.17	2 859 323.34		R324	-27 266.65	2 859 510.14			
L326	-27 219.35	2 859 378.92		R325	-27 387.48	2 859 644.63			
L327	-27 280.84	2 859 465.47		R326	-27 392.89	2 859 651.12			
L328	-27 412.87	2 859 613.71		R327	-27 607.22	2 859 888.21			
L329	-27 561.30	2 859 777.09		R328	-27 648.53	2 859 928.78			
L330	-27 668.16	2 859 892.57		R329	-27 727.40	2 860 010.12			
L331	-27 741.54	2 859 965.89		R330	-27 778.82	2 860 055.02			
L332	-27 790.27	2 860 011.96		R331	-28 034.22	2 860 264.02			
L333	-27 903.58	2 860 109.92		R332	-28 120.94	2 860 335.09			
L334	-28 056.12	2 860 229.41		R333	-28 270.49	2 860 456.37			
L335	-28 139.64	2 860 295.96		R334	-28 486.03	2 860 686.60			
L336	-28 196.35	2 860 339.81		R335	-28 541.34	2 860 752.27			
L337	-28 288.99	2 860 417.69		R336	-28 645.98	2 860 852.40			
L338	-28 359.42	2 860 488.54		R337	-28 901.04	2 861 060.87			
L339	-28 504.27	2 860 652.46		R338	-28 963.55	2 861 108.87			
L340	-28 569.51	2 860 724.01		R339	-29 045.73	2 861 160.53			
L341	-28 673.70	2 860 823.56		R340	-29 168.68	2 861 217.50			
L342	-28 910.86	2 861 018.00		R341	-29 248.82	2 861 239.08			
L343	-28 940.75	2 861 041.75		R342	-29 285.85	2 861 249.05			
L344	-28 979.10	2 861 070.41		R343	-29 322.30	2 861 258.63			
L345	-29 005.03	2 861 087.21		R344	-29 391.88	2 861 266.59			
L346	-29 061.61	2 861 123.74		R345	-29 543.09	2 861 272.77			
L347	-29 115.44	2 861 149.49		R346	-29 672.00	2 861 274.28			
L348	-29 174.52	2 861 177.54		R347	-29 792.54	2 861 274.57			
L349	-29 225.93	2 861 190.42		R348	-29 863.98	2 861 276.51			
L350	-29 270.93	2 861 201.69		R349	-29 910.49	2 861 280.22			
L351	-29 335.01	2 861 219.86		R350	-30 200.11	2 861 332.15			
L352	-29 390.82	2 861 225.93		R351	-30 583.21	2 861 407.09			
L353	-29 423.15	2 861 229.87		R352	-30 636.50	2 861 425.02			
L354	-29 454.29	2 861 231.17		R353	-30 662.73	2 861 430.30			
L355	-29 509.19	2 861 233.33		R354	-30 667.08	2 861 430.94			
L356	-29 698.81	2 861 234.17		R355	-30 788.78	2 861 446.67			
L357	-29 809.52	2 861 234.48		R356	-31 082.37	2 861 503.01			
					Vel Sheet	20	Van of	22	P1224/22

PADRESERWE KOÖRDINATE / ROAD RESERVE CO-ORDINATES									
LINKERKANT/LEFT HAND SIDE					REGTERKANT/RIGHT HAND SIDE				
	Y		X	WG 27°		Y		X	
L358	-29 832.75	2 861	234.49		R357	-31 180.68	2 861	517.31	
L359	-29 912.99	2 861	240.23		R358	-31 981.37	2 861	569.35	
L360	-30 032.50	2 861	259.04		R359	-33 031.37	2 861	637.55	
L361	-31 056.63	2 861	457.74		R360	-33 197.21	2 861	662.00	
L362	-31 173.67	2 861	475.88		R361	-33 291.45	2 861	689.45	
L363	-31 688.57	2 861	510.89		R362	-33 366.52	2 861	719.18	
L364	-32 827.56	2 861	583.99		R363	-33 458.77	2 861	762.74	
L365	-33 024.20	2 861	596.25		R364	-34 164.67	2 862	183.47	
L366	-33 182.73	2 861	618.15		R365	-34 696.06	2 862	501.17	
L367	-33 245.05	2 861	631.49		R366	-34 734.75	2 862	521.25	
L368	-33 315.46	2 861	656.31		R367	-34 819.59	2 862	548.69	
L369	-33 422.98	2 861	701.62		R368	-35 233.04	2 862	642.84	
L370	-33 478.46	2 861	726.99		R369	-35 810.57	2 862	772.81	
L371	-34 192.22	2 862	153.13		R370	-35 917.92	2 862	797.94	
L372	-34 719.38	2 862	468.56		R371	-36 053.75	2 862	844.51	
L373	-34 831.72	2 862	512.01		R372	-36 147.45	2 862	880.02	
L374	-35 279.09	2 862	613.00		R373	-36 236.25	2 862	922.09	
L375	-35 662.04	2 862	700.10		R374	-36 276.74	2 862	942.60	
L376	-35 802.99	2 862	731.30		R375	-36 447.59	2 863	036.29	
L377	-35 879.15	2 862	749.05		R376	-37 393.91	2 863	567.58	
L378	-35 940.39	2 862	765.86		R377	-37 401.05	2 863	571.75	
L379	-35 996.62	2 862	783.16		R378	-37 686.89	2 863	731.90	
L380	-36 057.35	2 862	803.98		R379	-38 027.37	2 863	923.25	
L381	-36 115.93	2 862	826.00		R380	-38 142.38	2 863	997.50	
L382	-36 175.44	2 862	850.49		R381	-38 198.98	2 864	039.11	
L383	-36 245.92	2 862	882.29		R382	-38 261.21	2 864	090.25	
L384	-36 471.68	2 863	004.31		R383	-38 490.13	2 864	279.05	
L385	-37 420.92	2 863	537.89		R384	-38 745.55	2 864	490.00	
L386	-37 566.71	2 863	618.28		R385	-38 804.33	2 864	539.03	
L387	-37 922.40	2 863	818.49		R386	-39 132.48	2 864	812.74	
L388	-38 128.28	2 863	935.54		R387	-39 160.06	2 864	835.69	
L389	-38 198.30	2 863	986.29		R388	-39 214.84	2 864	881.87	
L390	-38 514.91	2 864	248.55		R389	-39 476.81	2 865	100.42	
L391	-38 763.51	2 864	454.72		R390	-39 506.32	2 865	123.26	
L392	-38 810.82	2 864	493.97		R391	-39 530.73	2 865	142.20	
L393	-39 153.87	2 864	779.55		R392	-39 613.21	2 865	189.09	
L394	-39 179.86	2 864	801.17		R393	-40 419.37	2 865	509.35	
L395	-39 231.70	2 864	844.26		R394	-40 479.45	2 865	549.40	
L396	-39 516.18	2 865	080.64		R395	-40 578.54	2 865	644.74	
L397	-39 582.97	2 865	126.42		R396	-40 631.64	2 865	695.73	
L398	-39 638.65	2 865	154.80		R397	-40 650.40	2 865	750.55	
L399	-40 072.26	2 865	327.33		R398	-40 673.60	2 865	776.51	
L400	-40 406.32	2 865	459.95		R399	-40 686.91	2 865	763.26	
L401	-40 483.35	2 865	500.93		R400	-40 726.58	2 865	787.06	
L402	-40 866.27	2 865	865.37		R401	-40 799.46	2 865	857.30	
L403	-41 117.14	2 866	109.98		R402	-41 212.69	2 866	254.70	
L404	-41 214.28	2 866	202.59		R403	-41 322.90	2 866	333.46	
L405	-41 293.57	2 866	266.14		R404	-41 703.47	2 866	557.54	
L406	-41 362.23	2 866	310.39		R405	-42 034.31	2 866	752.67	
L407	-41 789.72	2 866	562.61		R406	-42 566.05	2 867	065.43	
L408	-42 510.61	2 866	987.43		R407	-42 686.26	2 867	131.22	
					<div> <div>Vel Sheet</div> <div>21</div> <div>Van of</div> <div>22</div> <div>P1224/22</div> </div>				

PADRESERWE KOÖRDINATE / ROAD RESERVE CO-ORDINATES									
LINKERKANT/LEFT HAND SIDE					REGTERKANT/RIGHT HAND SIDE				
	Y		X	WG 27°		Y		X	
L409	-42 659.08	2	867 072.96		R408	-42 755.24	2	867 156.56	
L410	-42 733.98	2	867 107.26		R409	-42 880.33	2	867 181.96	
L411	-42 855.73	2	867 137.97		R410	-43 576.37	2	867 267.05	
L412	-43 489.45	2	867 213.44		R411	-43 971.79	2	867 329.27	
L413	-44 220.58	2	867 330.85		R412	-44 249.90	2	867 375.58	
L414	-44 317.34	2	867 344.43		R413	-44 302.57	2	867 383.36	
L415	-44 460.60	2	867 353.53		R414	-44 433.92	2	867 391.63	
L416	-44 688.42	2	867 366.99		R415	-44 704.23	2	867 407.51	
L417	-44 953.63	2	867 382.77		R416	-44 900.23	2	867 418.46	
L418	-45 000.03	2	867 379.80		R417	-44 976.99	2	867 429.60	
L419	-45 025.07	2	867 386.34		R418	-45 053.69	2	867 446.80	
L420	-45 066.19	2	867 408.64		R419	-45 090.71	2	867 458.85	
L421	-45 135.35	2	867 434.29		R420	-45 343.11	2	867 570.78	
L422	-45 211.43	2	867 467.70		R421	-45 397.12	2	867 597.48	
L423	-45 427.50	2	867 566.14		R422	-45 440.01	2	867 625.40	
L424	-45 461.24	2	867 547.72		R423	-45 467.14	2	867 648.12	
L425	-45 479.43	2	867 564.54		R424	-45 505.67	2	867 706.47	
L426	-45 497.68	2	867 627.51		R425	-45 542.91	2	867 774.79	
L427	-45 541.27	2	867 687.17		R426	-45 676.12	2	868 102.19	
L428	-45 716.70	2	868 108.37						

Printed by and obtainable from the Government Printer, Bosman Street, Private Bag X85, Pretoria, 0001
Contact Centre Tel: 012-748 6200. eMail: info.egazette@gpw.gov.za
Publications: Tel: (012) 748 6053, 748 6061, 748 6065