



# Government Gazette Staatskoerant

REPUBLIC OF SOUTH AFRICA  
REPUBLIEK VAN SUID AFRIKA

Vol. 694

21

April  
April

2023

No. 48454



N.B. The Government Printing Works will not be held responsible for the quality of "Hard Copies" or "Electronic Files" submitted for publication purposes

ISSN 1682-5845



9 771682 584003

**AIDS HELPLINE: 0800-0123-22 Prevention is the cure**

**IMPORTANT NOTICE:**

**THE GOVERNMENT PRINTING WORKS WILL NOT BE HELD RESPONSIBLE FOR ANY ERRORS THAT MIGHT OCCUR DUE TO THE SUBMISSION OF INCOMPLETE / INCORRECT / ILLEGIBLE COPY.**

**No FUTURE QUERIES WILL BE HANDLED IN CONNECTION WITH THE ABOVE.**

**Contents**

<i>No.</i>	<i>Gazette No.</i>	<i>Page No.</i>
------------	------------------------	---------------------

**GOVERNMENT NOTICES • GOEWERMENTSKENNISGEWINGS****Transport, Department of/ Vervoer, Departement van**

3333	South African National Roads Agency Limited and the National Roads Act (7/1998): Declaration Amendment of National Road R63 Section 9: Amendment of Declaration No. 305 of 2012.....	48454	3
3333	Suid-Afrikaanse Nasionale Padagentskap Beperk en Nasionale Paaie Wet (7/1998): Verklaring Wysiging van Nasionale Pad R63 Seksie 9: Wysiging van Verklaring No. 305 van 2012 .....	48454	4

---

**GOVERNMENT NOTICES • GOEWERMENTSKENNISGEWINGS**

---

**DEPARTMENT OF TRANSPORT**

NO. 3333

21 April 2023

**THE SOUTH AFRICAN NATIONAL ROADS  
AGENCY SOC LIMITED**Registration No: 1998/009584/30

---

**DECLARATION AMENDMENT OF NATIONAL ROAD R63 SECTION 9**

AMENDMENT OF DECLARATION No. 305 OF 2012.

By virtue of section 40(1)(b) of the South African National Roads Agency Limited and the National Roads Act 1998 (Act No. 7 of 1998), I hereby amend Declaration No. 305 of 2012 by substituting paragraph D(III) of the Schedule, being the descriptive declaration of the route from its junction with National Road R75 Section 4 up to Pearston, with the accompanying sheets 1 to 11 of Plan No. P1221/22.

In the town of Pearston the R63 Section 9 enters the town from the west and continues in an easterly direction along the street known as Voortrekker Street, at time of declaration, up to its intersection with the street known as Hoof Street, at the time of declaration.

**(National Road R63 Section 9: R75 Junction – Pearston)**

---

**MINISTER OF TRANSPORT**

## DEPARTEMENT VAN VERVOER

NO. 3333

21 April 2023

**DIE SUID-AFRIKAANSE NASIONALE  
PADAGENTSKAP MSB BEPERK**

Registrasie No: 1998/009584/30

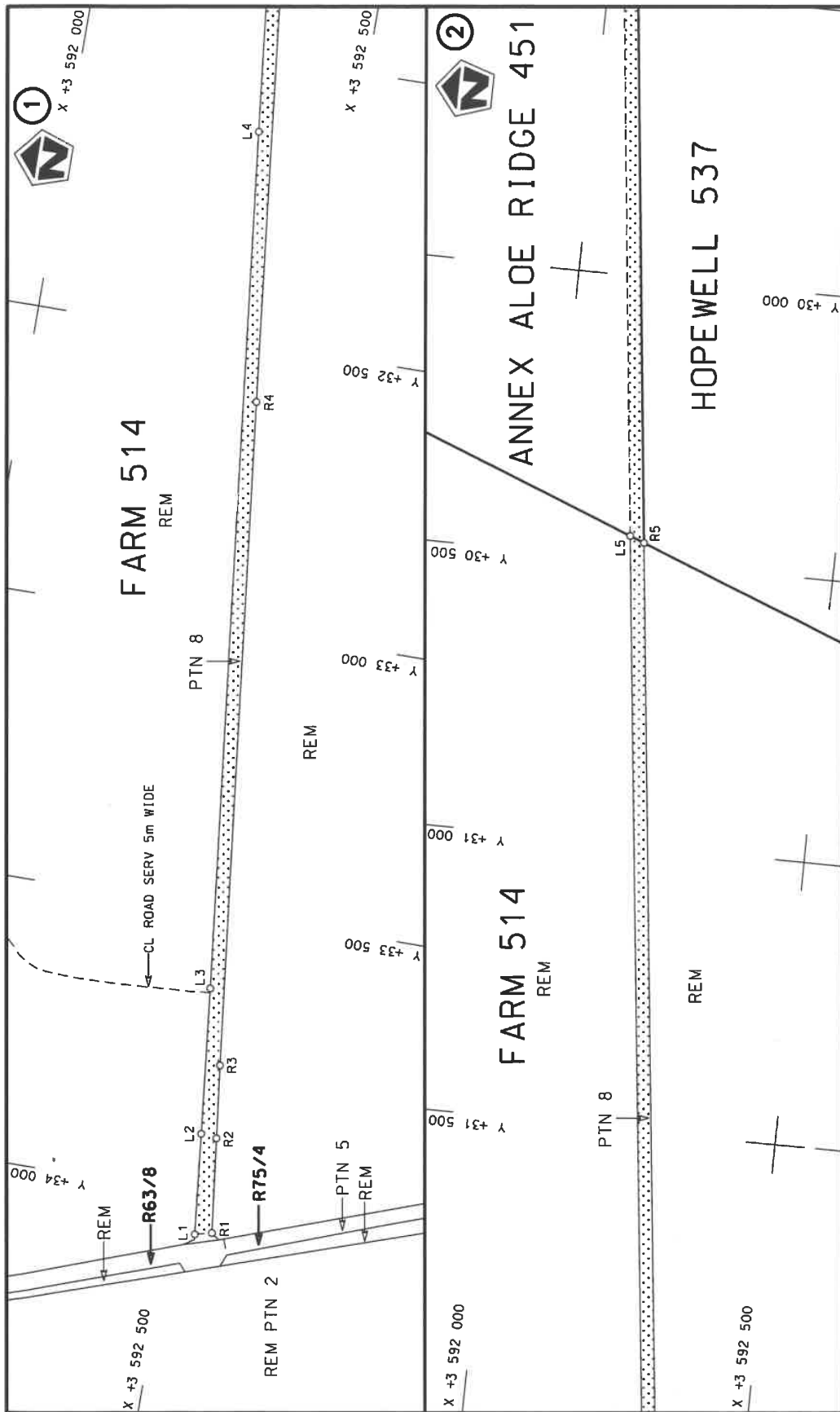
**VERKLARING WYSIGING VAN NASIONALE PAD R63 SEKSIE 9**


WYSIGING VAN VERKLARING No. 305 VAN 2012.

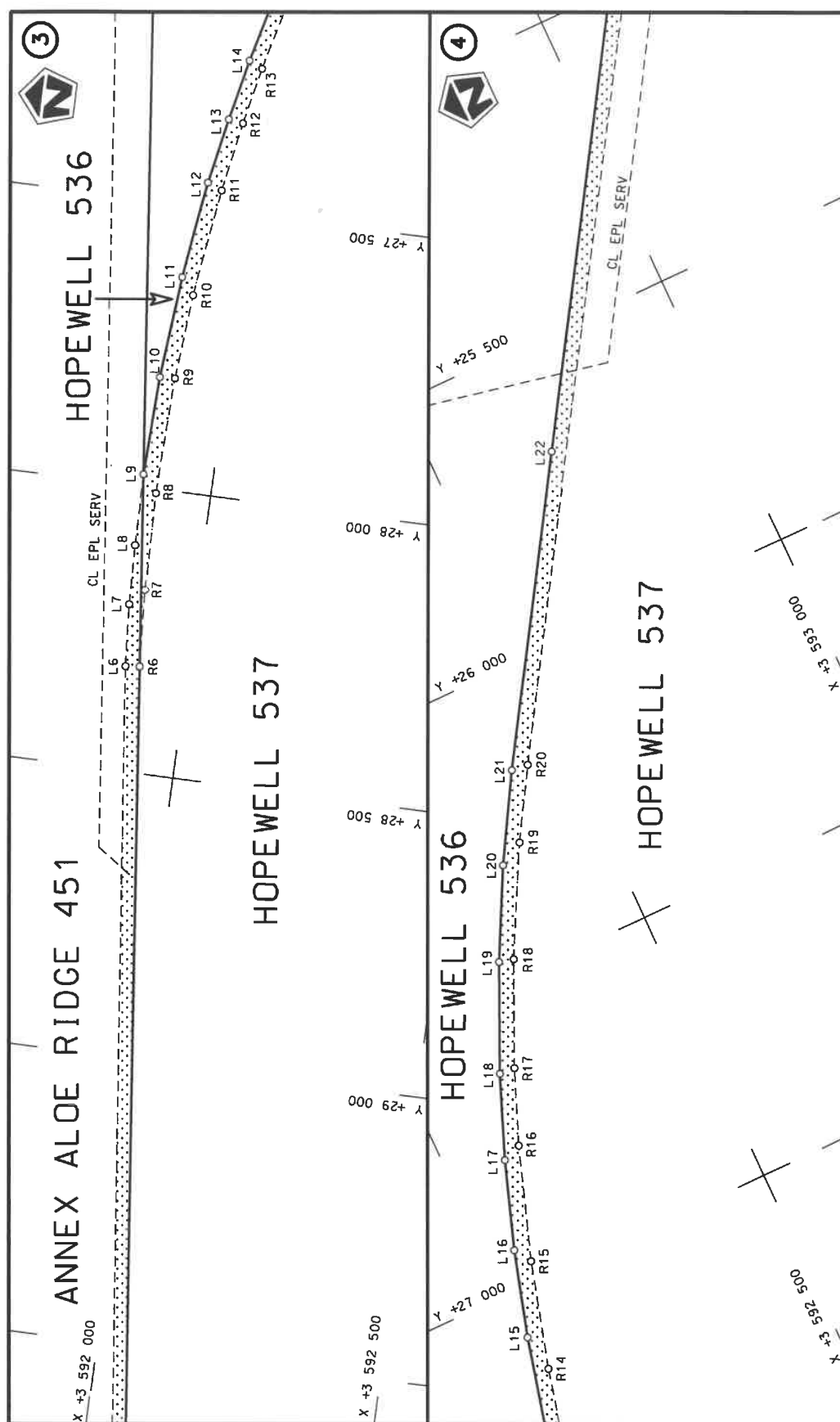
Kragtens Artikel 40(1)(b) van die Suid-Afrikaanse Nasionale Padagentskap Beperk en Nasionale Paaie Wet 1998 (Wet No. 7 van 1998), wysig ek hiermee Verklaring No. 305 van 2012 deur paragraaf D(III) van die Skedule te vervang, synde die gedeelte van die beskrywende verklaring van die pad vanaf die aansluiting met Nasionale Pad R75 Seksie 4 tot by Pearston, met bygaande velle 1 tot 11 van Plan No. P1221/22.


In die dorp Pearston kom die R63 Seksie 9 die dorp binne vanuit die weste en volg dan die straat bekend as Voorstrekkerstraat, tydens datum van verklaring, in 'n oostelike rigting to by die interseksie met die straat bekend as Hoofstraat, tydens datum van verklaring.

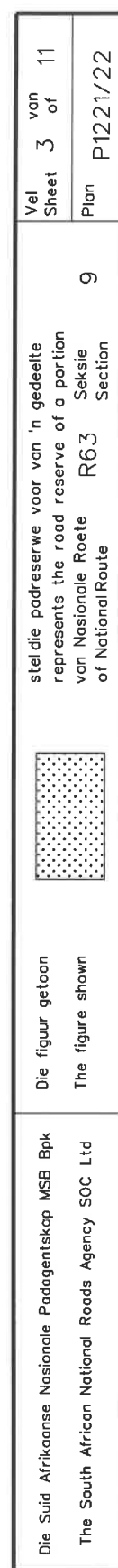
**(Nasionale Pad R63 Seksie 9: R75 Aansluiting – Pearston)****MINISTER VAN VERVOER**

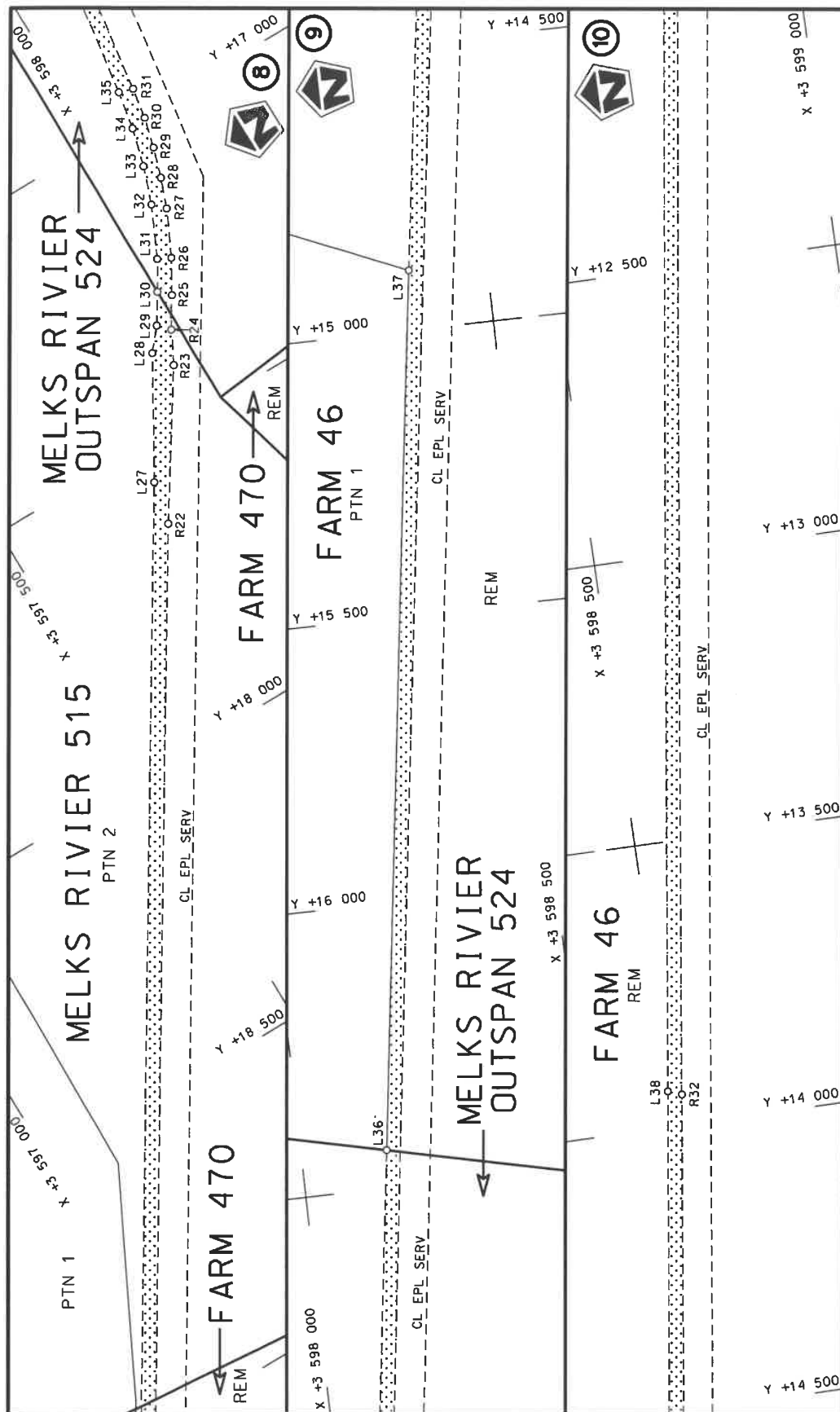



Die Suid Afrikaanse Nasionale Padagentskap MSB Bpk The South African National Roads Agency SOC Ltd	Die figuur getoon The figure shown		stel die padreserwe voor van 'n gedeelte represents the road reserve of a portion van Nasionale Roete R63 of National Route	Vel Sheet 1 of 11 Plan P1221/22
---	---------------------------------------	---	--	---------------------------------------



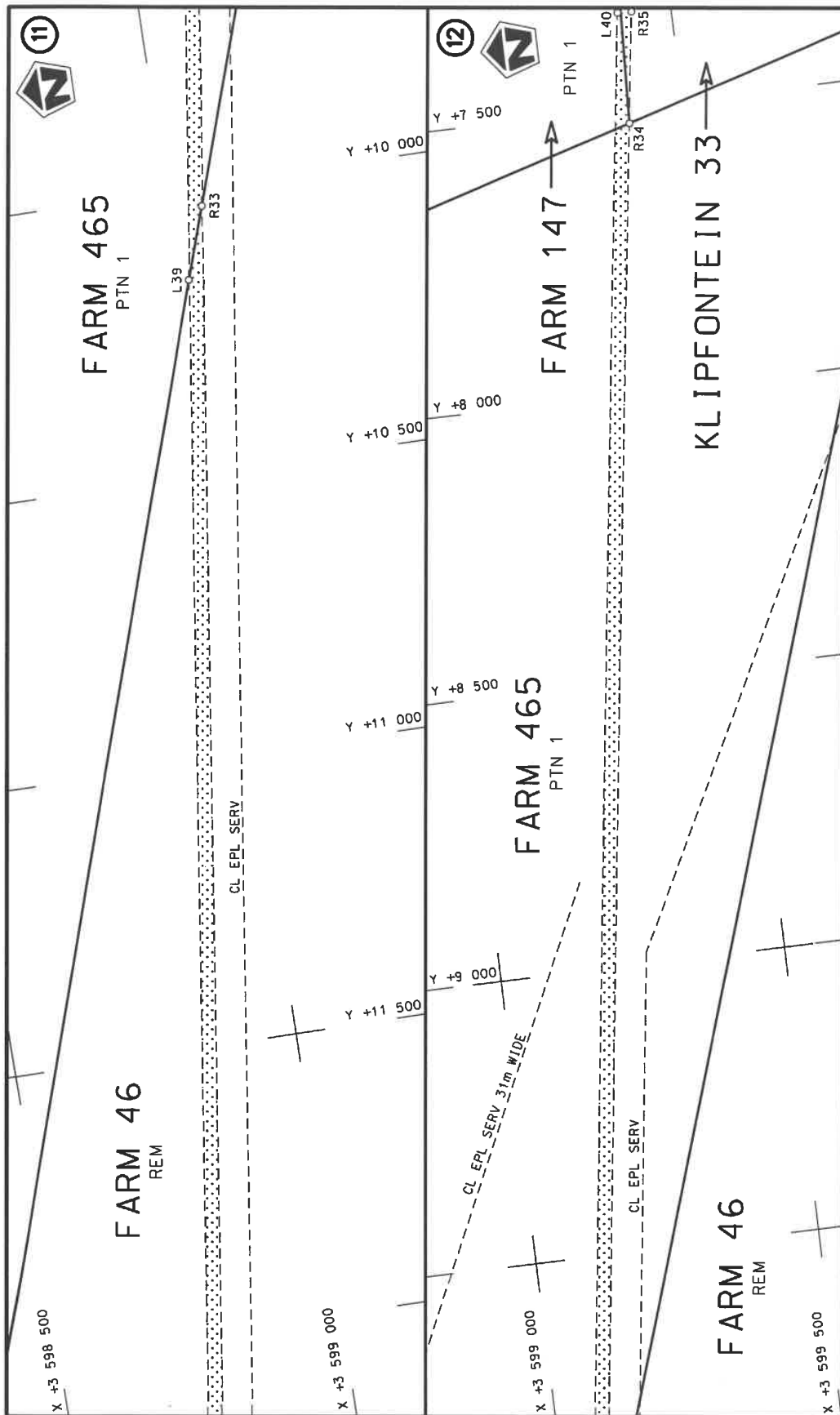
Die Suid Afrikaanse Nasionale Padagentskap MSB Bpk The South African National Roads Agency SOC Ltd	Die figuur getoon The figure shown		steldie padreserwe voor van 'n gedeelte represents the road reserve of a portion van Nasionale Roete of National Route	9	Vel Sheet 2 of 11
					Plan P1221/22



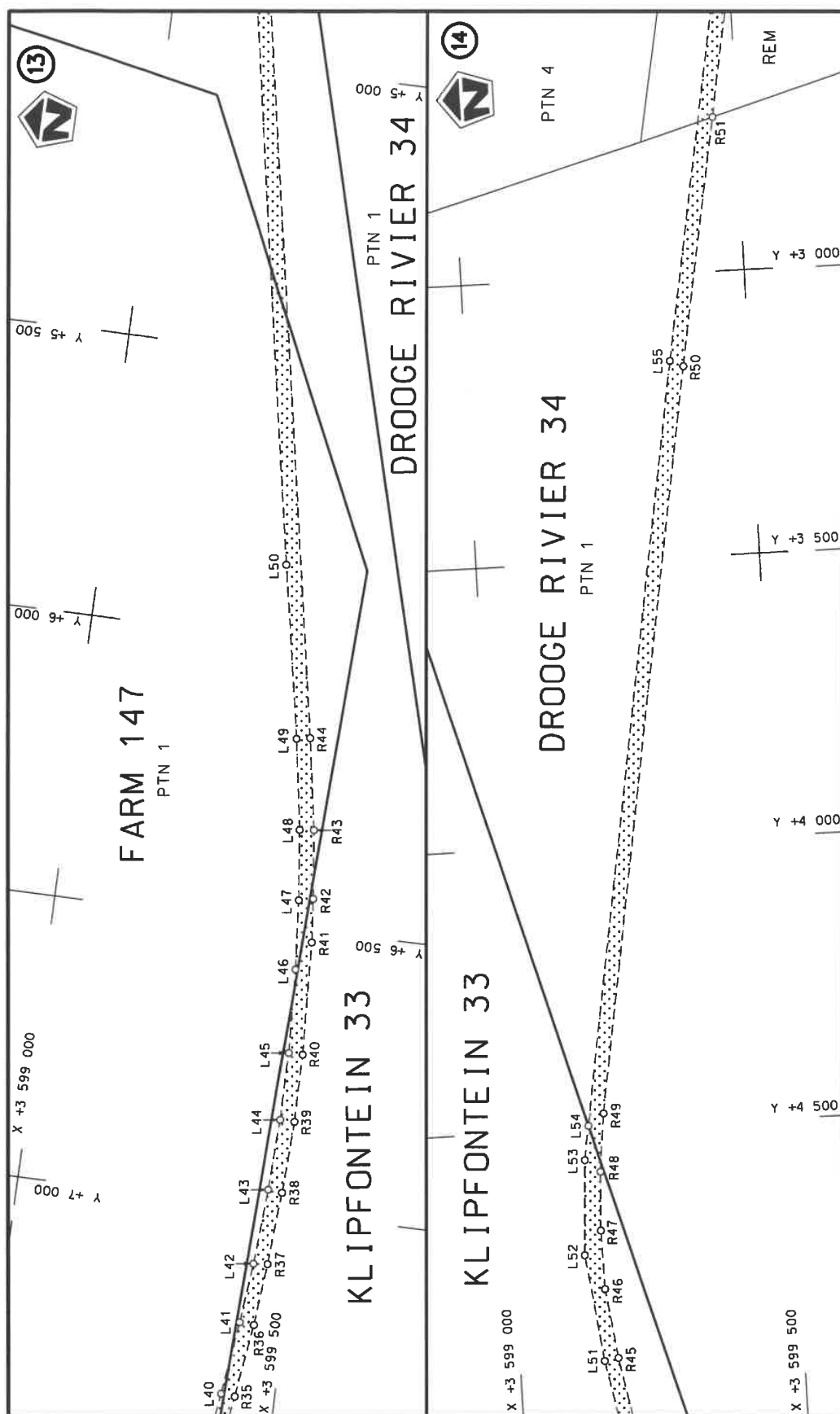



Die Suid Afrikaanse Nasionale Padagentskap MSB Bpk The South African National Roads Agency SOC Ltd	Die figuur getoon The figure shown	 steldie podreserwe voor van 'n gedeelte represents the road reserve of a portion van Nasionale Roete R63 Seksie of National Route Section	Vel Sheet 4 of 11 Plan P1221/22
---	---------------------------------------	--	---------------------------------------

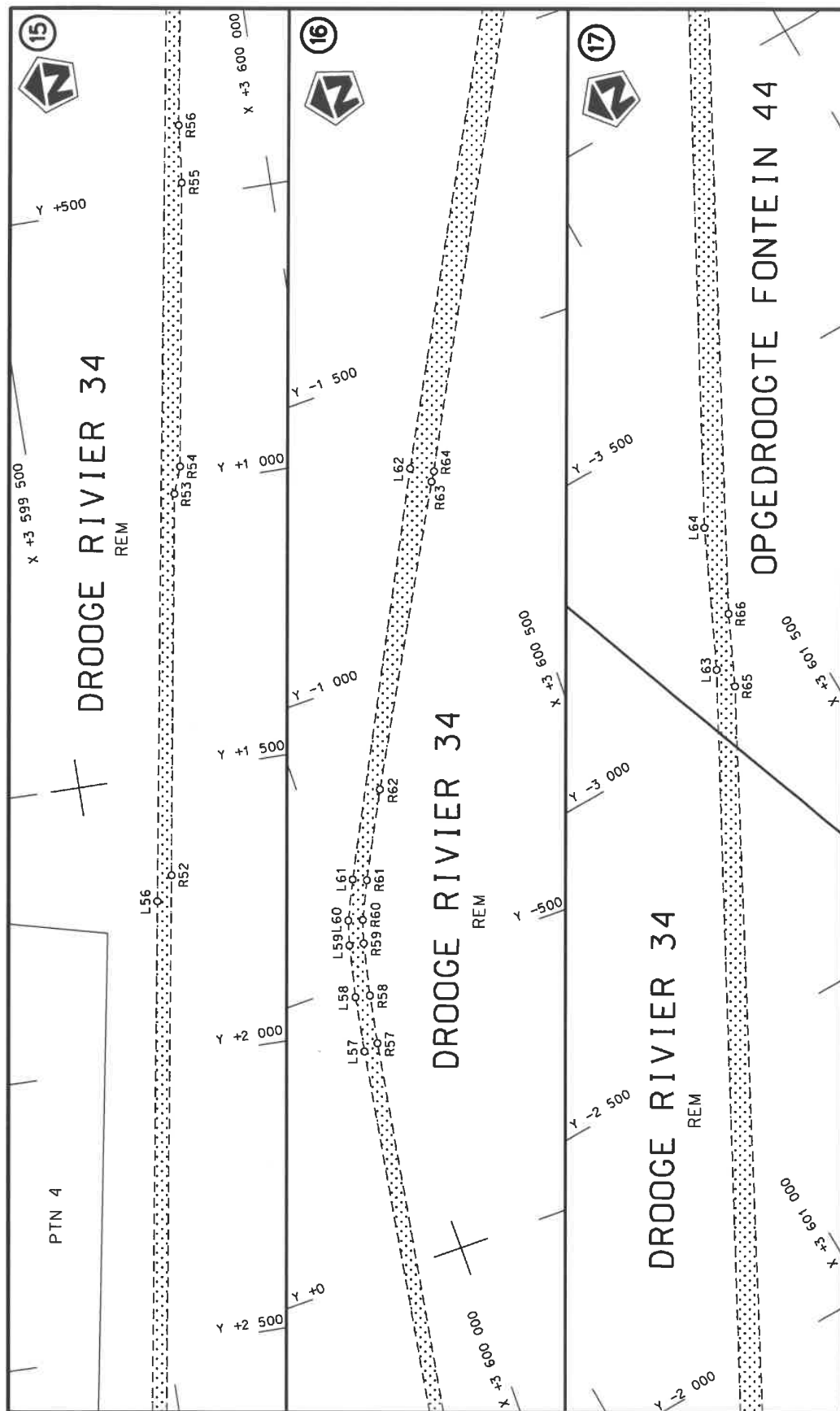




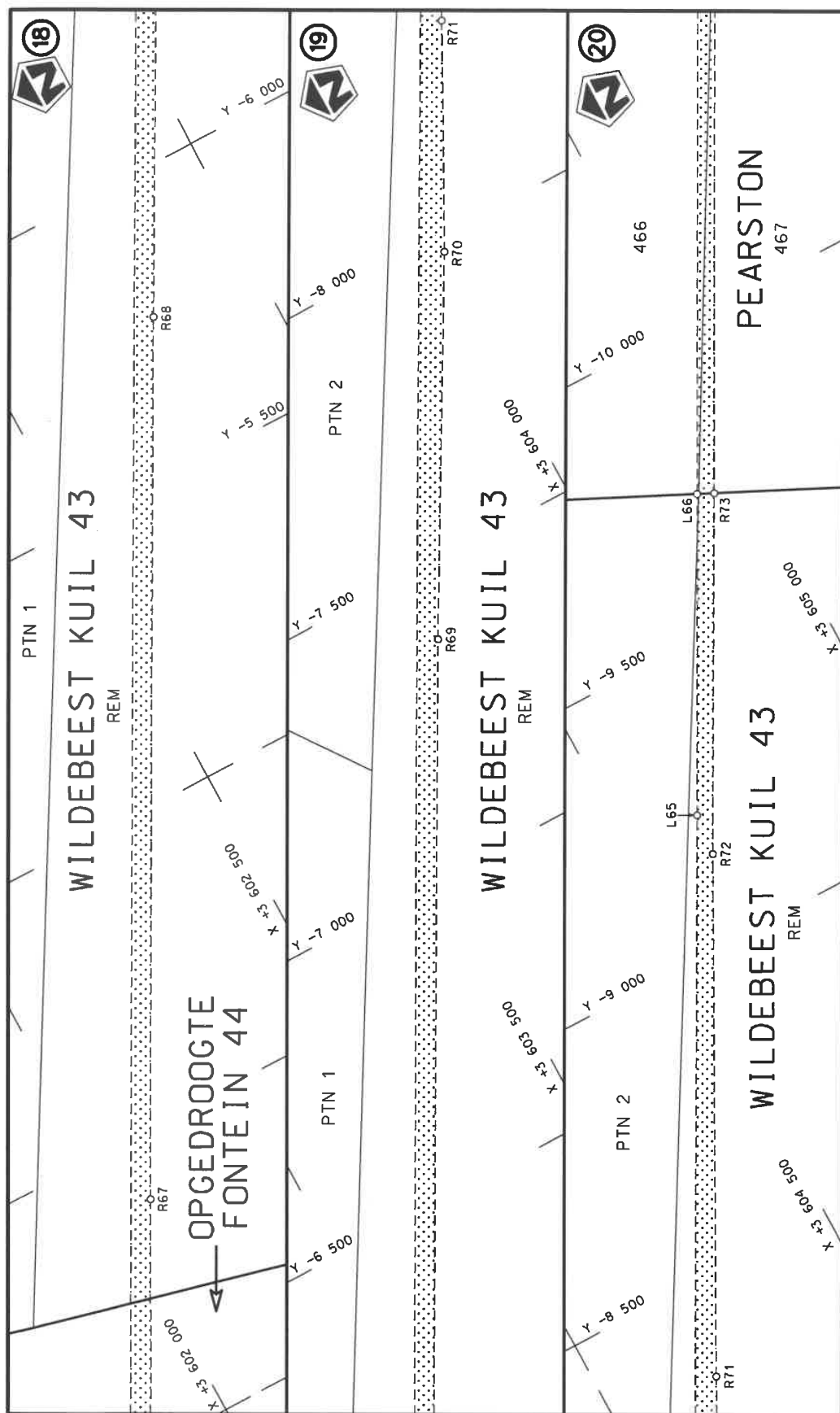
Die Suid Afrikaanse Nasionale Padagentskap MSB Bpk The South African National Roads Agency SOC Ltd	Die figuur getoon The figure shown	steldie padreserwe voor van 'n gedeelte represents the road reserve of a portion of Nasionale Roete of National Route	Vel Sheet 5 of 11 Plan P1221/22
---	---------------------------------------	--	---------------------------------------

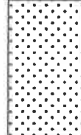


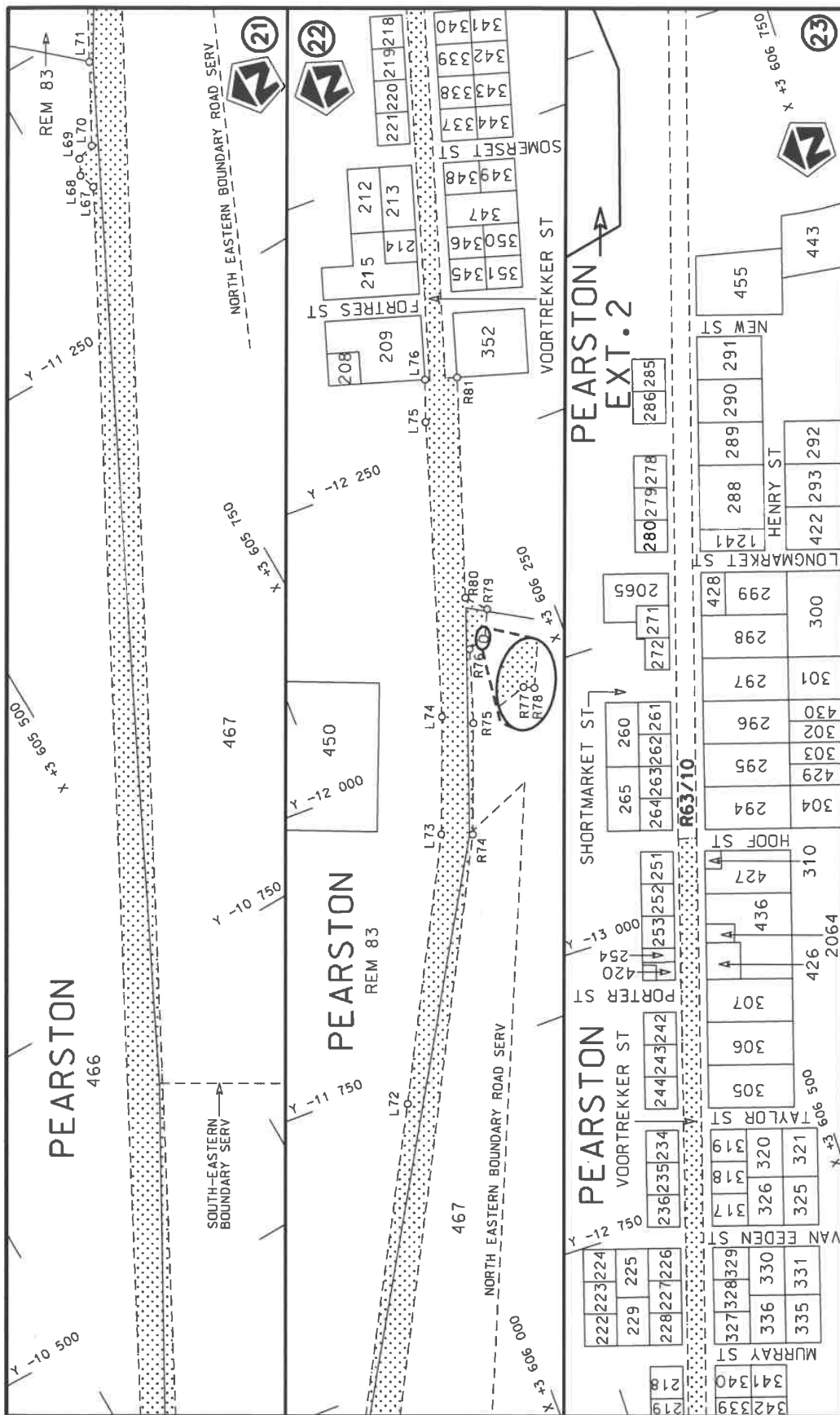
Die Suid Afrikaanse Nasionale Padagentskap MSB Bpk The South African National Roads Agency SOC Ltd	Die figuur getoon The figure shown	 stel die padreserwe voor van 'n gedeelte represents the road reserve of a portion van Nasionale Roete R63 of National Route Sektie Section	Vel Sheet 6 van of 11 Plan P1221/22
---	---------------------------------------	--	--



Die Suid Afrikaanse Nasionale Padagentskap MSB Bpk The South African National Roads Agency SOC Ltd	Die figuur getoon The figure shown	stel die padreserwe voor van 'n gedeelte represents the road reserve of a portion van Nasionale Roete R63 of National Route	Vel Sheet	7 of	11 Plan
					P1221/22



Die Suid Afrikaanse Nasionale Padagentskap MSB Bpk The South African National Roads Agency SOC Ltd	Die figuur getoon The figure shown	 steldie padreserwe voor van 'n gedeelte represents the road reserve of a portion van Nasionale Roete R63 Sektie of National Route R63 Section	Vel Sheet 8 van of 11  Plan P1221/22
---	---------------------------------------	---	--



Die Suid Afrikaanse Nasionale Padagentskap MSB Bpk The South African National Roads Agency SOC Ltd	Die figuur getoon The figure shown	steldie podreserwe voor van 'n gedeelte represents the road reserve of a portion van Nasionale Roete R63 of National Route	Vel Sheet 9 of 11 Plan P1221/22
---	---------------------------------------	---	---------------------------------------

PADRESERWE KOÖRDINATE / ROAD RESERVE CO-ORDINATES									
LINKERKANT/LEFT HAND SIDE					REGTERKANT/RIGHT HAND SIDE				
	Y		X	WG 25°		Y		X	
L1	34 065.66	3	592	545.60	R1	34 061.49	3	592	575.04
L2	33 892.04	3	592	527.74	R2	33 895.63	3	592	554.85
L3	33 636.70	3	592	500.37	R3	33 767.80	3	592	539.65
L4	32 133.03	3	592	329.83	R4	32 602.32	3	592	406.42
L5	30 456.66	3	592	138.48	R5	30 466.57	3	592	164.08
L6	28 315.55	3	591	893.37	R6	28 313.36	3	591	918.11
L7	28 206.79	3	591	885.20	R7	28 178.55	3	591	909.10
L8	28 102.84	3	591	881.26	R8	28 007.49	3	591	904.95
L9	27 977.45	3	591	879.74	R9	27 803.54	3	591	910.57
L10	27 804.75	3	591	885.59	R10	27 654.92	3	591	923.09
L11	27 625.83	3	591	900.55	R11	27 466.72	3	591	947.34
L12	27 455.91	3	591	923.14	R12	27 345.65	3	591	968.38
L13	27 341.51	3	591	943.74	R13	27 246.70	3	591	989.06
L14	27 234.59	3	591	965.93	R14	27 146.43	3	592	013.12
L15	27 082.97	3	592	003.66	R15	26 962.60	3	592	065.44
L16	26 934.56	3	592	047.56	R16	26 770.23	3	592	132.03
L17	26 784.38	3	592	099.83	R17	26 643.96	3	592	182.81
L18	26 643.37	3	592	156.04	R18	26 470.23	3	592	262.65
L19	26 464.84	3	592	237.64	R19	26 288.72	3	592	358.53
L20	26 313.90	3	592	316.09	R20	26 170.44	3	592	429.00
L21	26 168.58	3	592	400.81	R21	20 890.86	3	595	729.56
L22	25 689.87	3	592	699.94	R22	17 640.31	3	597	762.01
L23	23 629.52	3	593	987.34	R23	17 406.14	3	597	914.64
L24	23 373.27	3	594	147.45	R24	17 350.55	3	597	943.12
L25	21 885.06	3	595	078.12	R25	17 299.13	3	597	975.59
L26	20 881.91	3	595	705.60	R26	17 242.35	3	598	008.43
L27	17 565.07	3	597	779.01	R27	17 163.82	3	598	046.37
L28	17 368.73	3	597	893.33	R28	17 112.51	3	598	065.63
L29	17 331.23	3	597	925.10	R29	17 060.17	3	598	081.79
L30	17 280.87	3	597	957.05	R30	17 007.47	3	598	095.31
L31	17 231.30	3	597	986.32	R31	16 953.46	3	598	104.66
L32	17 144.10	3	598	027.00	R32	13 945.23	3	598	520.43
L33	17 079.13	3	598	049.79	R33	10 034.77	3	599	058.24
L34	17 012.69	3	598	068.09	R34	7 527.81	3	599	404.05
L35	16 945.62	3	598	080.27	R35	7 333.77	3	599	430.69
L36	16 433.28	3	598	151.59	R36	7 204.26	3	599	446.94
L37	14 895.11	3	598	362.97	R37	7 094.84	3	599	457.39
L38	13 936.48	3	598	496.68	R38	6 966.67	3	599	466.09
L39	10 159.62	3	599	016.67	R39	6 840.09	3	599	470.87
L40	7 332.59	3	599	406.21	R40	6 720.71	3	599	469.89
L41	7 203.13	3	599	422.22	R41	6 522.23	3	599	459.97
L42	7 097.70	3	599	432.54	R42	6 445.47	3	599	452.38
L43	6 965.08	3	599	441.52	R43	6 325.03	3	599	437.79
L44	6 839.90	3	599	446.33	R44	6 164.59	3	599	410.45
L45	6 720.99	3	599	445.16	R45	4 905.04	3	599	174.09
L46	6 573.46	3	599	437.60	R46	4 782.59	3	599	157.73
L47	6 451.22	3	599	427.77	R47	4 679.24	3	599	156.21
L48	6 327.82	3	599	412.86	R48	4 576.00	3	599	161.10
L49	6 169.11	3	599	386.67	R49	4 473.26	3	599	172.37
L50	5 866.45	3	599	328.97	R50	3 163.83	3	599	383.83
L51	4 909.20	3	599	150.06	R51	2 727.96	3	599	458.21
					<div> <div>Vel</div> <div>10</div> <div>Van</div> <div>of</div> <div>11</div> </div> <div>P1221/22</div>				



This gazette is also available free online at [www.gpwonline.co.za](http://www.gpwonline.co.za)







Printed by and obtainable from the Government Printer, Bosman Street, Private Bag X85, Pretoria, 0001  
Contact Centre Tel: 012-748 6200. eMail: [info.egazette@gpw.gov.za](mailto:info.egazette@gpw.gov.za)  
Publications: Tel: (012) 748 6053, 748 6061, 748 6065