



Government Gazette Staatskoerant

REPUBLIC OF SOUTH AFRICA
REPUBLIEK VAN SUID AFRIKA

Vol. 701

10

November
November 2023

No. 49656



N.B. The Government Printing Works will not be held responsible for the quality of "Hard Copies" or "Electronic Files" submitted for publication purposes

ISSN 1682-5845



9 771682 584003

AIDS HELPLINE: 0800-0123-22 Prevention is the cure

IMPORTANT NOTICE:

THE GOVERNMENT PRINTING WORKS WILL NOT BE HELD RESPONSIBLE FOR ANY ERRORS THAT MIGHT OCCUR DUE TO THE SUBMISSION OF INCOMPLETE / INCORRECT / ILLEGIBLE COPY.

No FUTURE QUERIES WILL BE HANDLED IN CONNECTION WITH THE ABOVE.

Contents

<i>No.</i>	<i>Gazette No.</i>	<i>Page No.</i>
------------	------------------------	---------------------

GOVERNMENT NOTICES • GOEWERMENTSKENNISGEWINGS**Transport, Department of / Vervoer, Departement van**

4055	South African National Roads Agency Limited and National Roads Act (7/1998): Declaration Amendment of National Road R23 Section 1, and declaration of existing road through the Towns of Volksrust and Standerton as part of National Road R23 Section	49656	3
4055	Suid-Afrikaanse Nasionale Padagentskap Beperk en Nasionale Paaie Wet (7/1998): Verklaring Wysiging van Nasionale Pad R23 Seksie 1, en verklaring van bestaande pad deur die Dorpsgebied van Volksrust en Standerton as deel van Nasionale Pad R23 Seksie 1	49656	4
4056	South African National Roads Agency Limited and National Roads Act (7/1998): Declaration Amendment of National Road R730 Section 3	49656	28
4056	Suid-Afrikaanse Nasionale Padagentskap Beperk en Nasionale Paaie Wet (7/1998): Verklaring Wysiging van Nasionale Pad R730 Seksie 3	49656	29

GOVERNMENT NOTICES • GOEWERMENTSKENNISGEWINGS

DEPARTMENT OF TRANSPORT**NO. 4055****10 November 2023****DECLARATION AMENDMENT OF NATIONAL ROAD R23 SECTION 1 AND DECLARATION OF EXISTING ROAD THROUGH THE TOWNS OF VOLKSRUST AND STANDERTON AS PART OF NATIONAL ROAD R23 SECTION 1**

- i) By virtue of Section 40 (1)(a) of The South African National Road Agency Limited and National Roads Act 1998 (Act No. 7 of 1998), I hereby declare the section of the road, commencing from its junction with National Road N11 Section 5 in Volksrust, and from there following the streets known as Adelaide Tambo Street and Govan Mbeki Drive at the time of declaration, up to points L1 and R1 on sheet 1 of Plan No. P700/08 of Declaration No. 1349 of 2008, as a National Road.
- ii) By virtue of Section 40 (1)(a) of The South African National Road Agency Limited and National Roads Act 1998 (Act No. 7 of 1998), I hereby declare the section of the road, commencing from the intersection with streets known as Dr Nelson Mandela Road and Leask Street, at time of declaration, from there continuing in a general north westerly direction along the street known as Dr Nelson Mandela Road and Handel Street at time of declaration, and therefrom continuing in a general northern direction along the street known as Walter Sisulu Drive at time of declaration up to the junction with National Road R23 Section 2, also known as the intersection between the streets known as Walter Sisulu Drive and Krogh Street at time of declaration, in Standerton, as a National Road.
- iii) By virtue of section 40(1)(b) of the South African National Road's Agency Limited and the National Roads Act 1998 (Act No. 7 of 1998), I hereby amend Declaration No. 1349 of 2008 by substituting it in its entirety with the accompanying sheets 1 to 23 of Plan No. P1194/20.

(National Road R23 Section 1: Volksrust – Standerton)**MINISTER OF TRANSPORT**

DEPARTEMENT VAN VERVOER

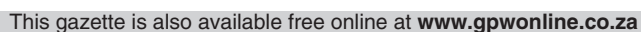
NO. 4055

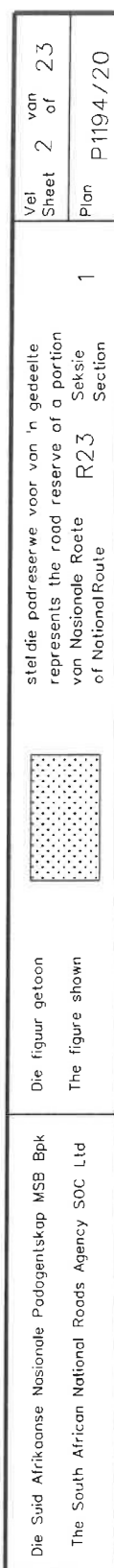
10 November 2023

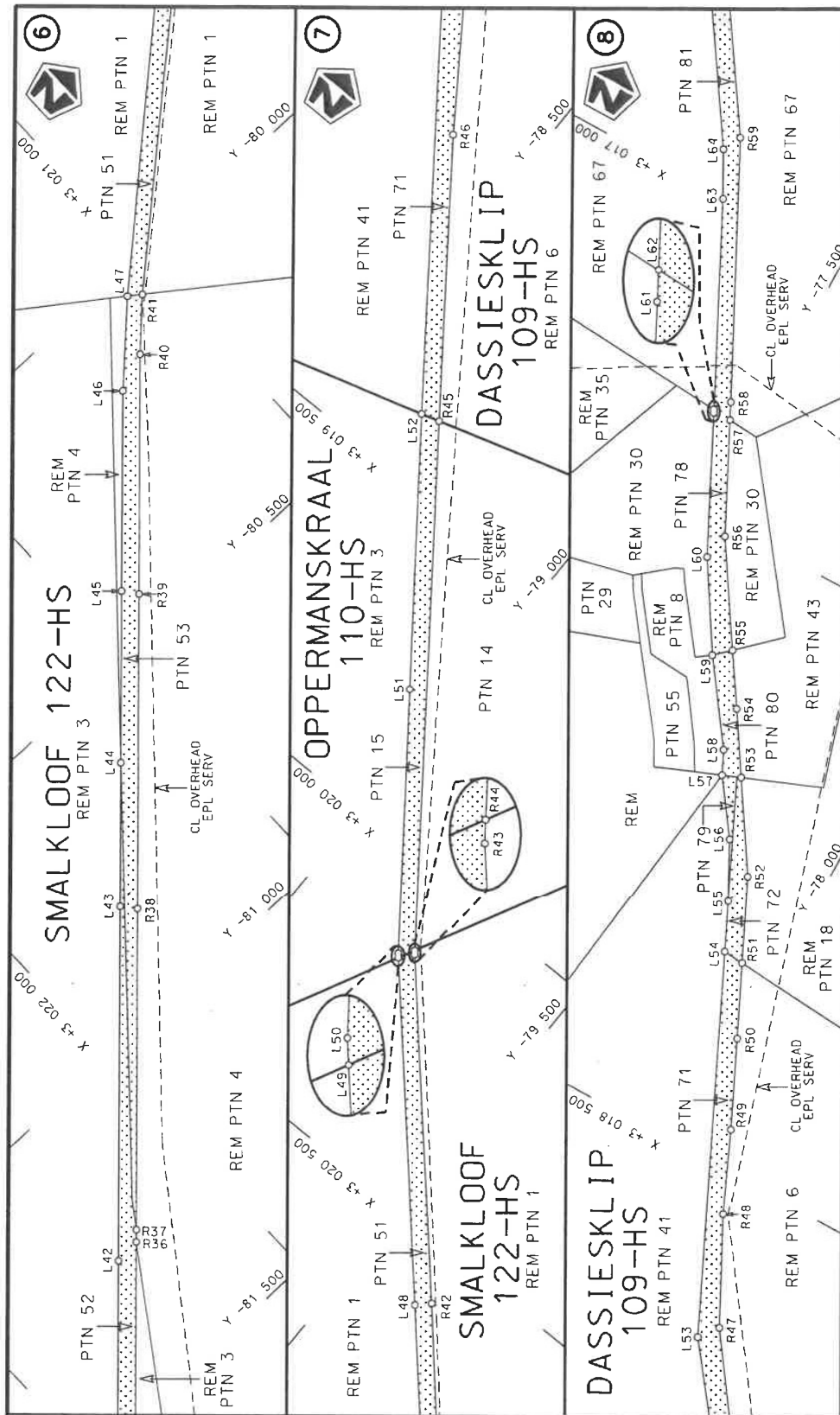
**VERKLARING WYSIGING VAN NASIONALE PAD R23 SEKSIE 1 EN VERKLARING VAN
BESTAANDE PAD DEUR DIE DORPSGEBIED VAN VOLKSRUST EN STANDERTONAS DEEL VAN
NASIONALE PAD R23 SEKSIE 1**

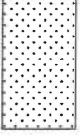
- i) Kragtens Artikel 40(1)(a) van die Suid-Afrikaanse Nasionale Padagentskap Beperk en Nasionale Paaie Wet 1998 (Wet No. 7 van 1998), verklaar ek hiermee die gedeelte van die pad, beginnende vanaf die aansluiting met Nasionale Pad N11 Seksie 5 in Volksrust, en daarvaandaan volg die strate bekend as Adelaide Tambo straat en Govan Mbeki Rylaan tydens datum van verklaring, tot by punte L1 en R1 op vel 1 van Plan No. P700/08 van Verklaring No. 1349 van 2008, as 'n Nasionale Pad.
- ii) Kragtens Artikel 40(1)(a) van die Suid-Afrikaanse Nasionale Padagentskap Beperk en Nasionale Paaie Wet 1998 (Wet No. 7 van 1998), verklaar ek hiermee die gedeelte van die pad, beginnende vanaf die interseksie met strate bekend as Dr Neslon Mandelapad en Leaskstraat, daarvandaan in 'n algemene noord westelike rigting langs die strate bekend as Dr Nelson Mandelapad en Handelstraat tydens datum van verklaring, en daarvandaan verder in 'n algemene noordelike rigting langs die straat bekend as Walter Sisuluweg tydens datum van verklaring tot by die aansluiting met Nasionale Pad R23 Seksie 2, ook bekend as die kruising tussen strate bekend as Walter Sisuluweg en Kroghstraat tydens datum van verklaring, tot 'n Nasionale Pad.
- iii) Kragtens Artikel 40(1)(b) van die Suid-Afrikaanse Nasionale Padagentskap Beperk en Nasionale Paaie Wet 1998 (Wet No. 7 van 1998), wysig ek hiermee Verklaring No. 1349 van 2008 deur dit in sy geheel te vervang met bygaande velle 1 tot 23 van Plan No. P1194/20.

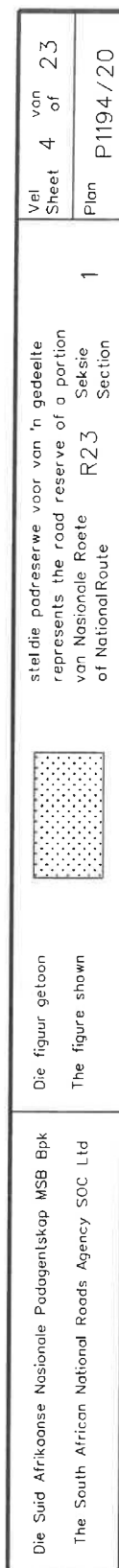
(Nasionale Pad R23 Seksie 1: Volksrust – Standerton)
MINISTER VAN VERVOER

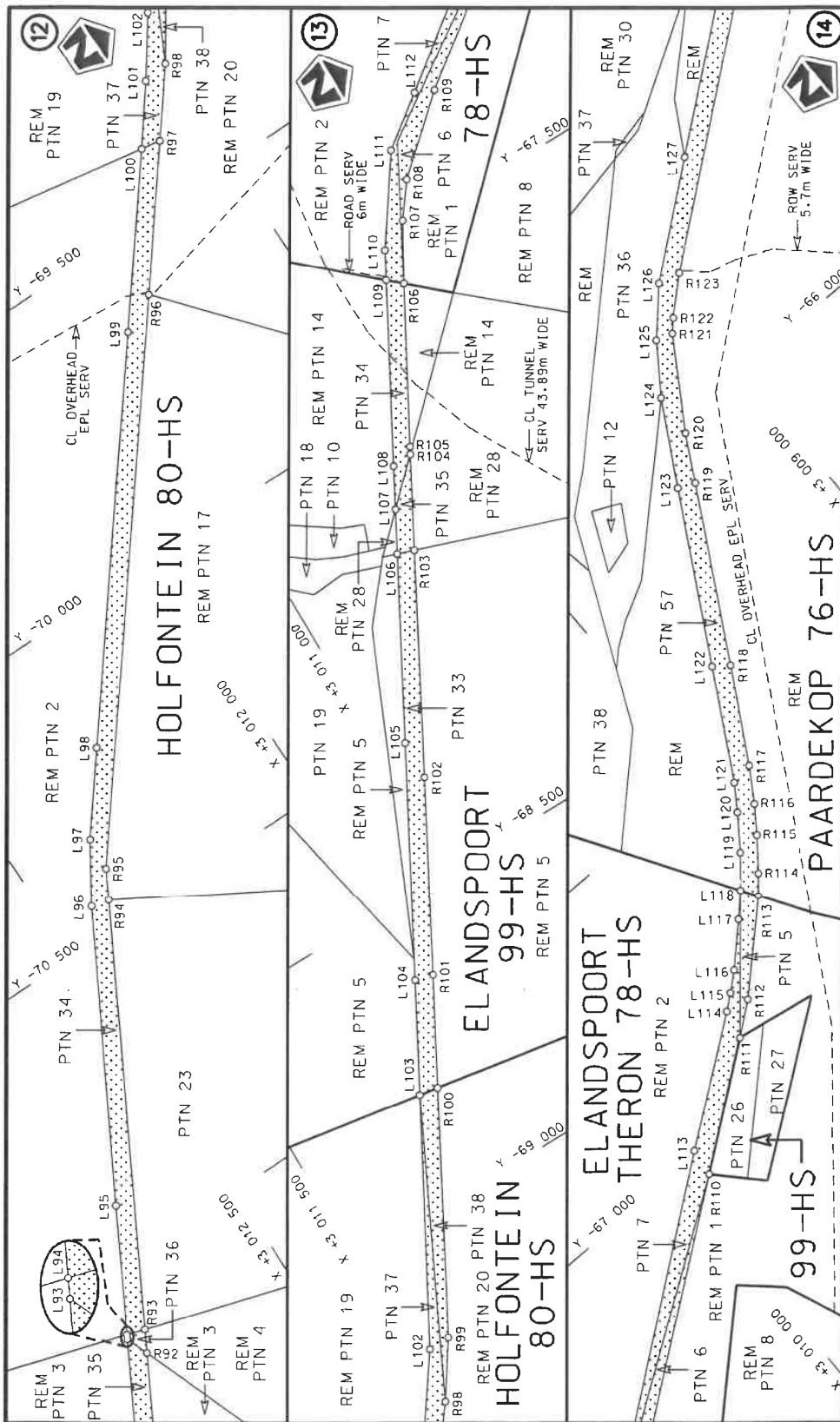




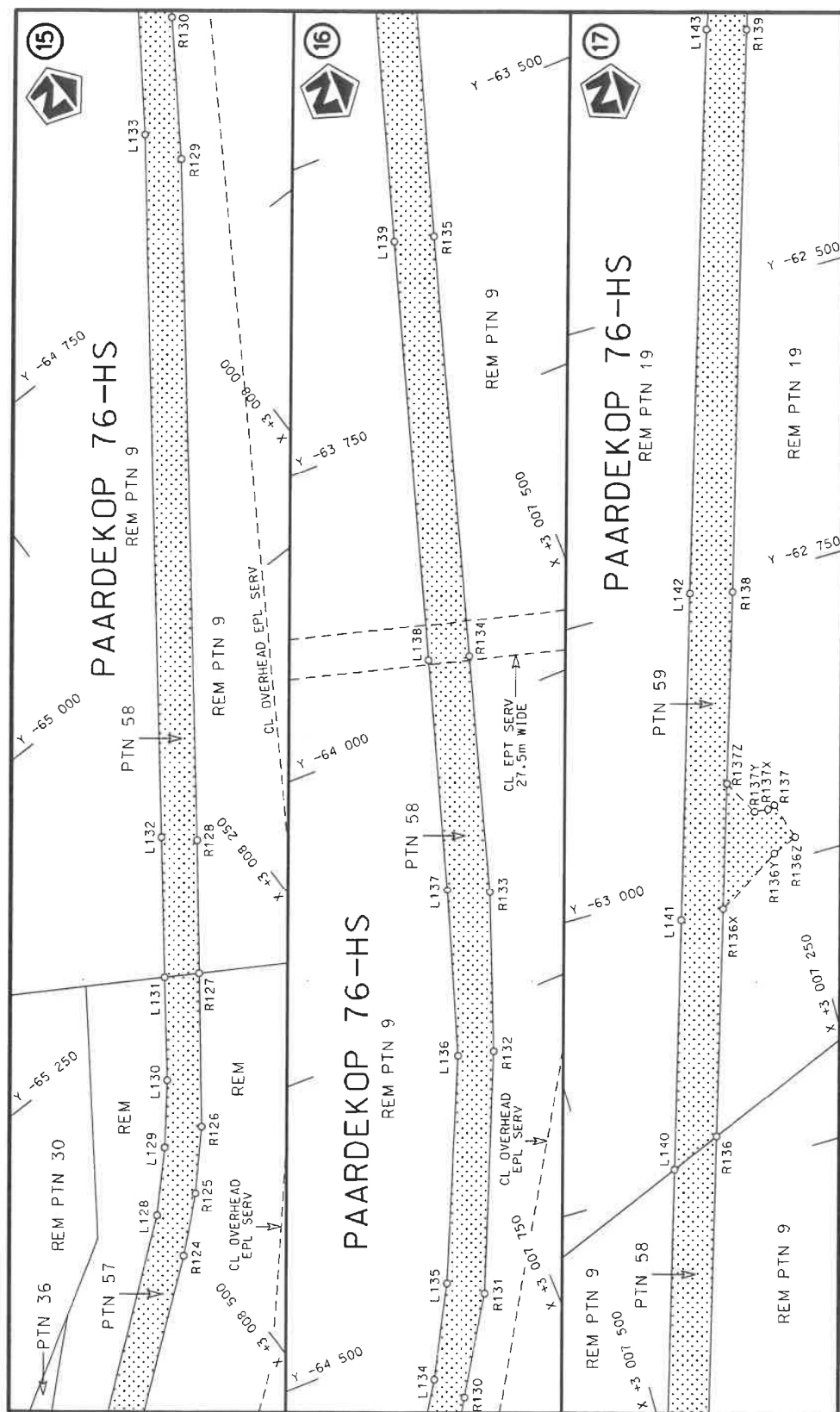


Die Suid Afrikaanse Nasionale Padagentskap MSB Bpk The South African National Roads Agency SOC Ltd	Die figuur getoon The figure shown		steldie padreserwe voor van 'n gedeelte represents the road reserve of a portion van Nasionale Roete R23 of National Route	1 Seksie Section	Vel Sheet 3 of 23	Plan P1194/20
---	---------------------------------------	---	---	------------------------	-------------------------	------------------



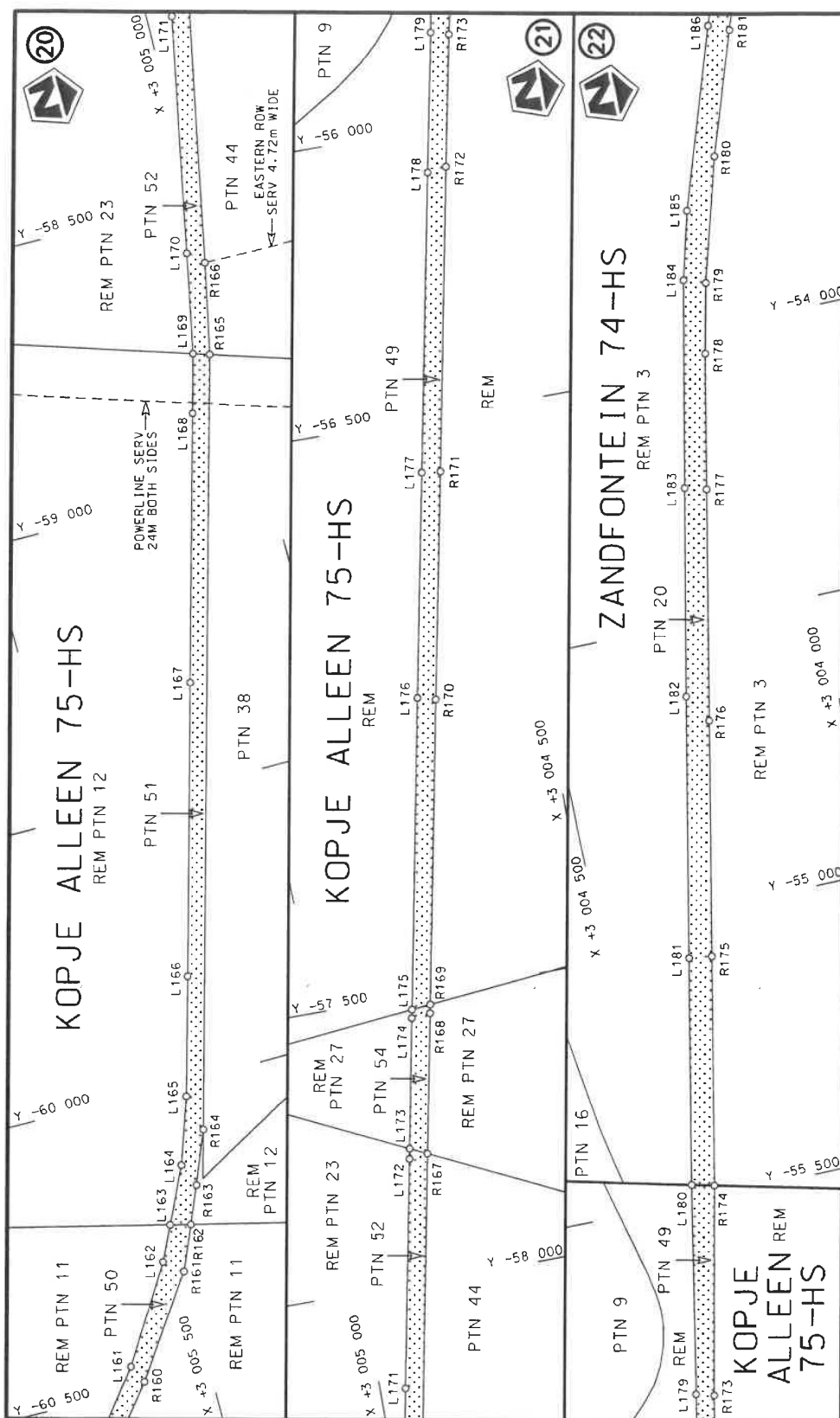


Die Suid Afrikaanse Nasionale Padagentskap MSB Bpk The South African National Roads Agency SOC Ltd	Die figuur getoon The figure shown	steldie padreserwe voor van 'n gedeelte represents the road reserve of a portion van Nasionale Roete R23 Seksie of National Route Section	Vel Sheet 5 of 23 Plan P1194/20
---	---------------------------------------	--	---------------------------------------

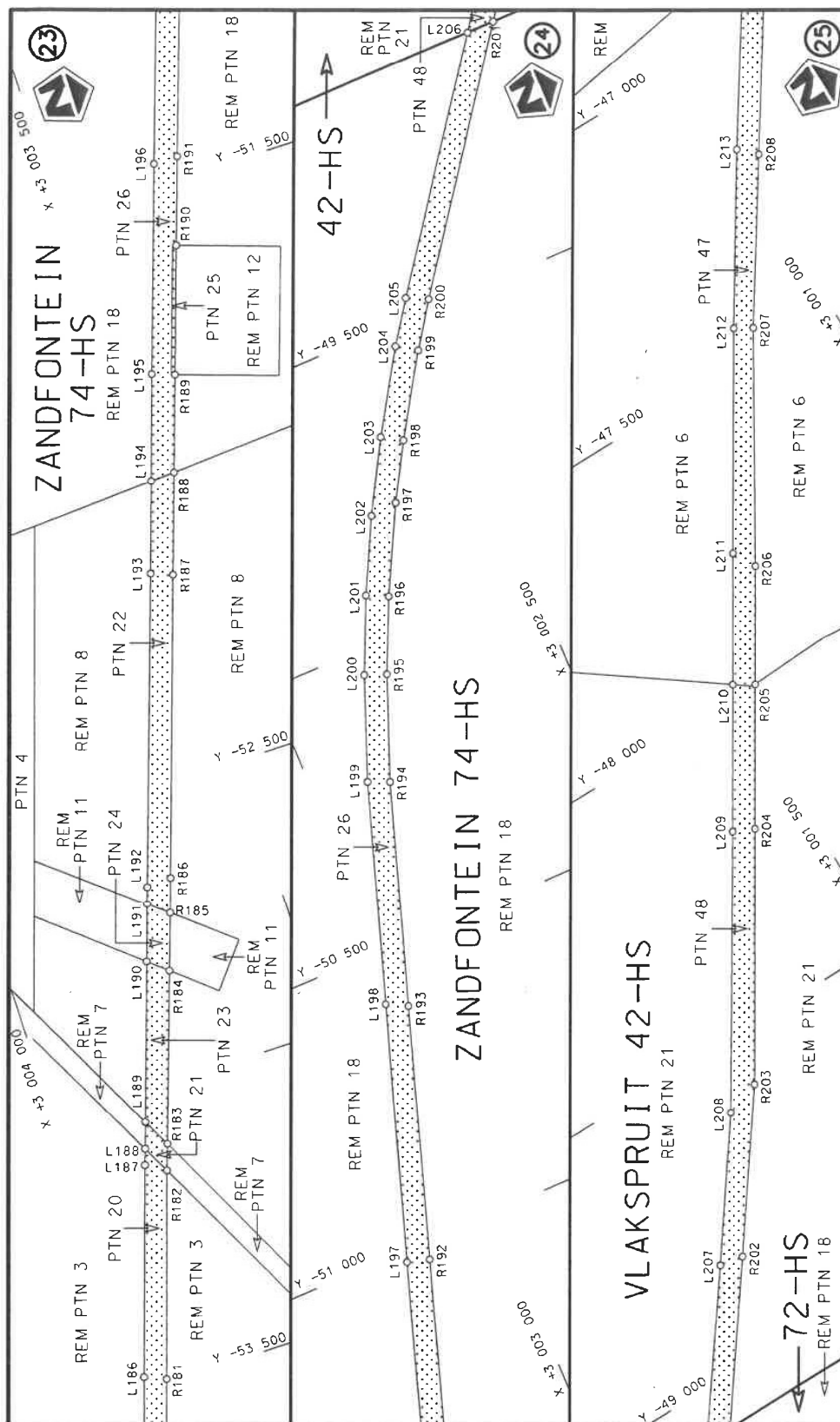



Die Suid Afrikaanse Nasionale Padagentskop MSB Bpk The South African National Roads Agency SOC Ltd	Die figuur getoon The figure shown	<div data-bbox="1220 1025 1295 1160" data-label="Image"> </div>	stel die padreserwe voor van 'n gedeelte represents the road reserve of a portion van Nasionale Roete R23 of National Route Seksie 1 Section	Vel Sheet 6 of 23 Plan P1194/20
---	---------------------------------------	---	---	---

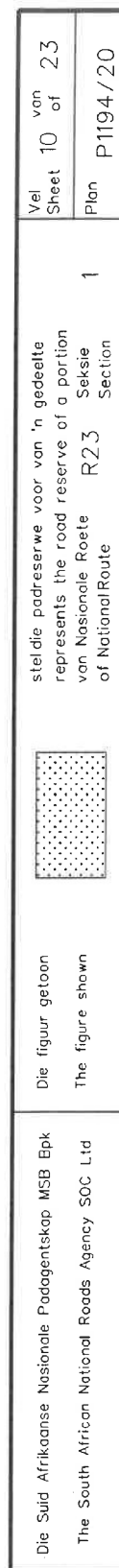


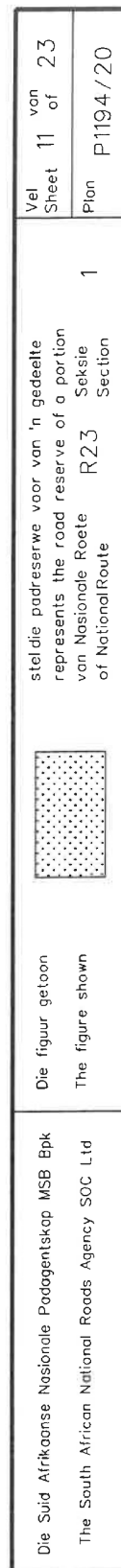


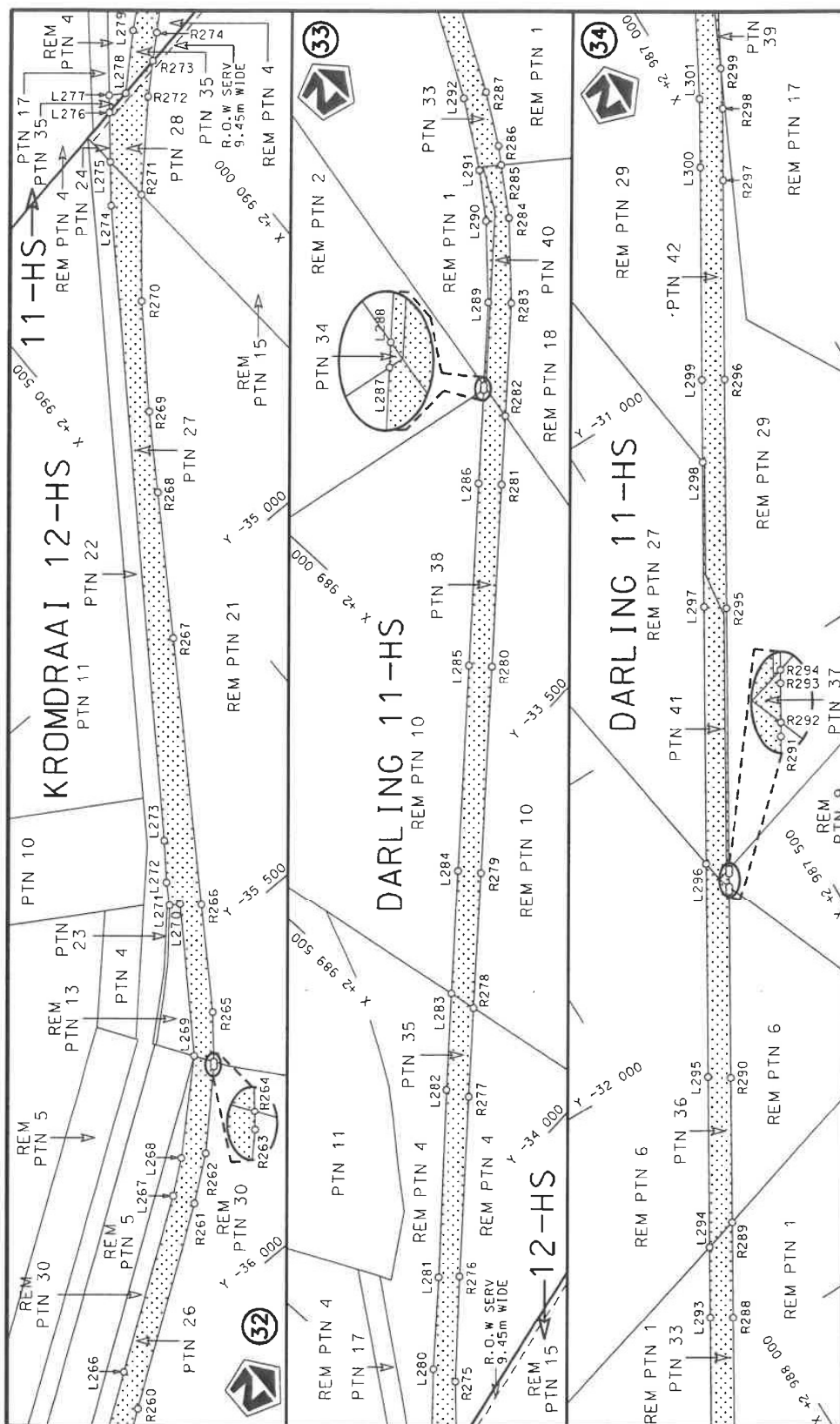
Die Suid Afrikaanse Nasionale Padagentskap MSB Bpk The South African National Roads Agency SOC Ltd	Die figuur getoon The figure shown	steldie padreserwe voor van 'n gedeelte represents the road reserve of a portion van Nasionale Roete R23 of National Route R23	Vel Sheet 8 of 23 Plan P1194/20
---	---------------------------------------	---	---------------------------------------



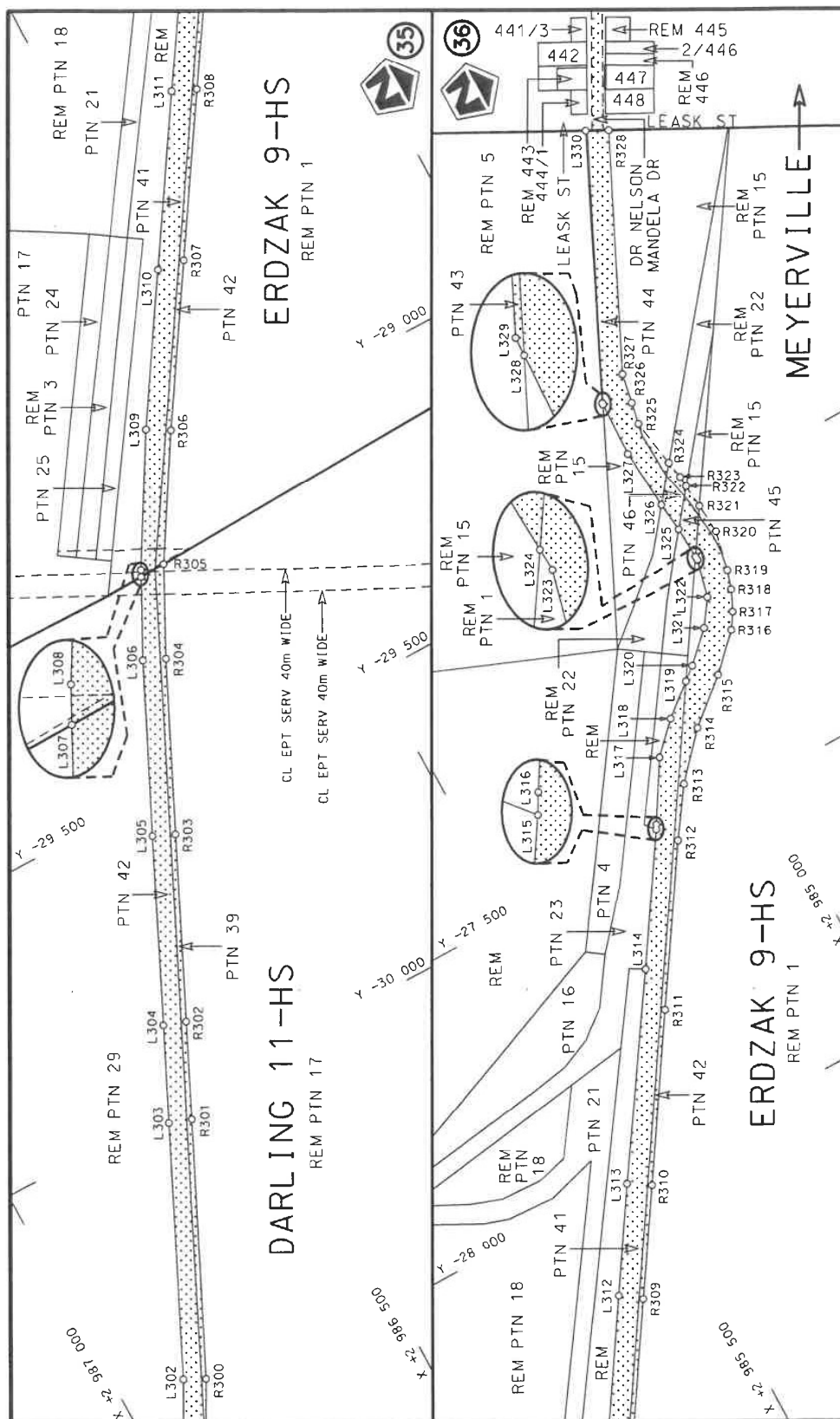
Die Suid Afrikaanse Nasionale Padagentskap MSB Bpk	Die figuur getoon		steldie padreserwe voor van 'n gedeelte represents the road reserve of a portion van Nasionale Roete R23 Seksie of National Route of National Route	Vel Sheet	9 of	23
The South African National Roads Agency SOC Ltd	The figure shown			1	Plan	P1194/20




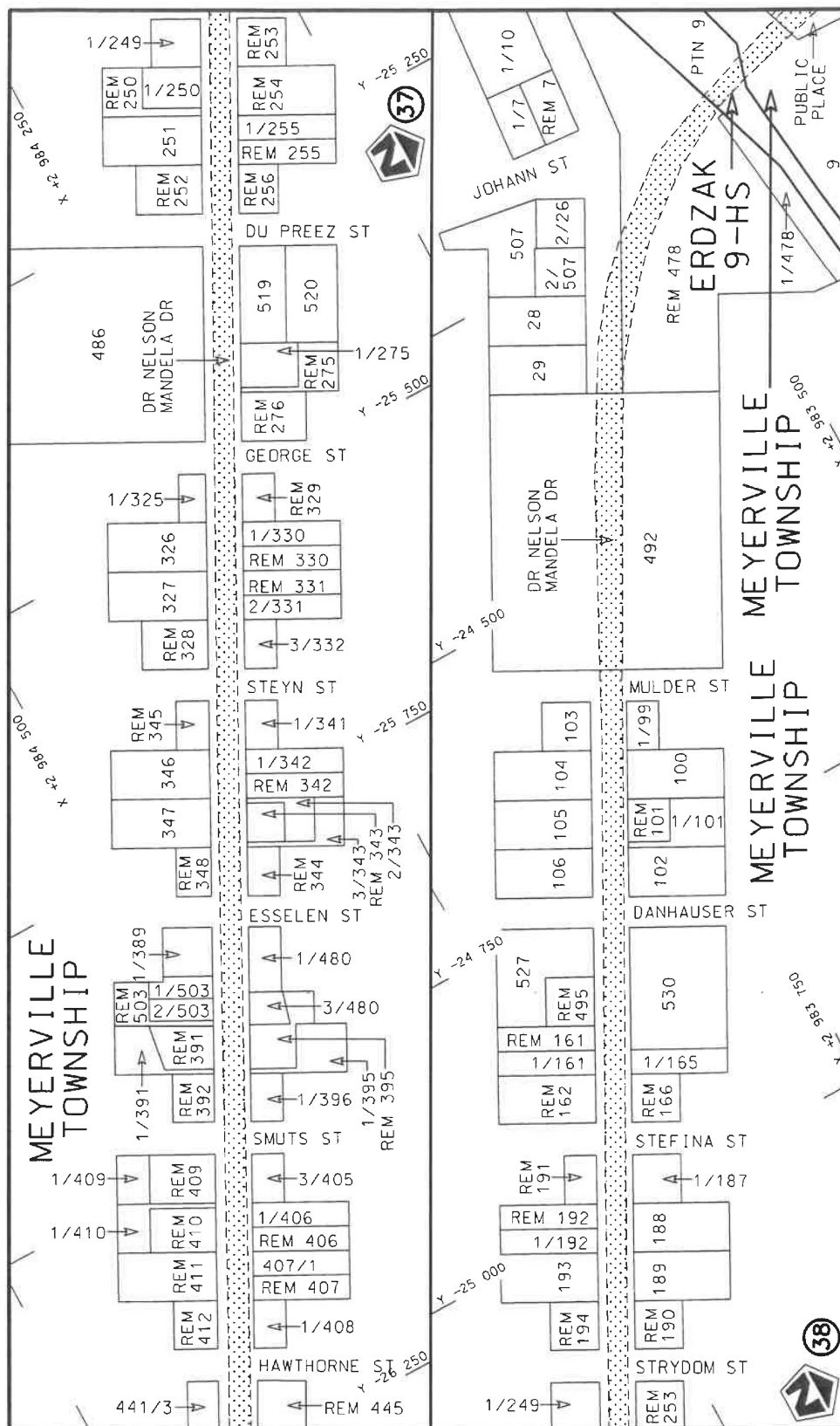





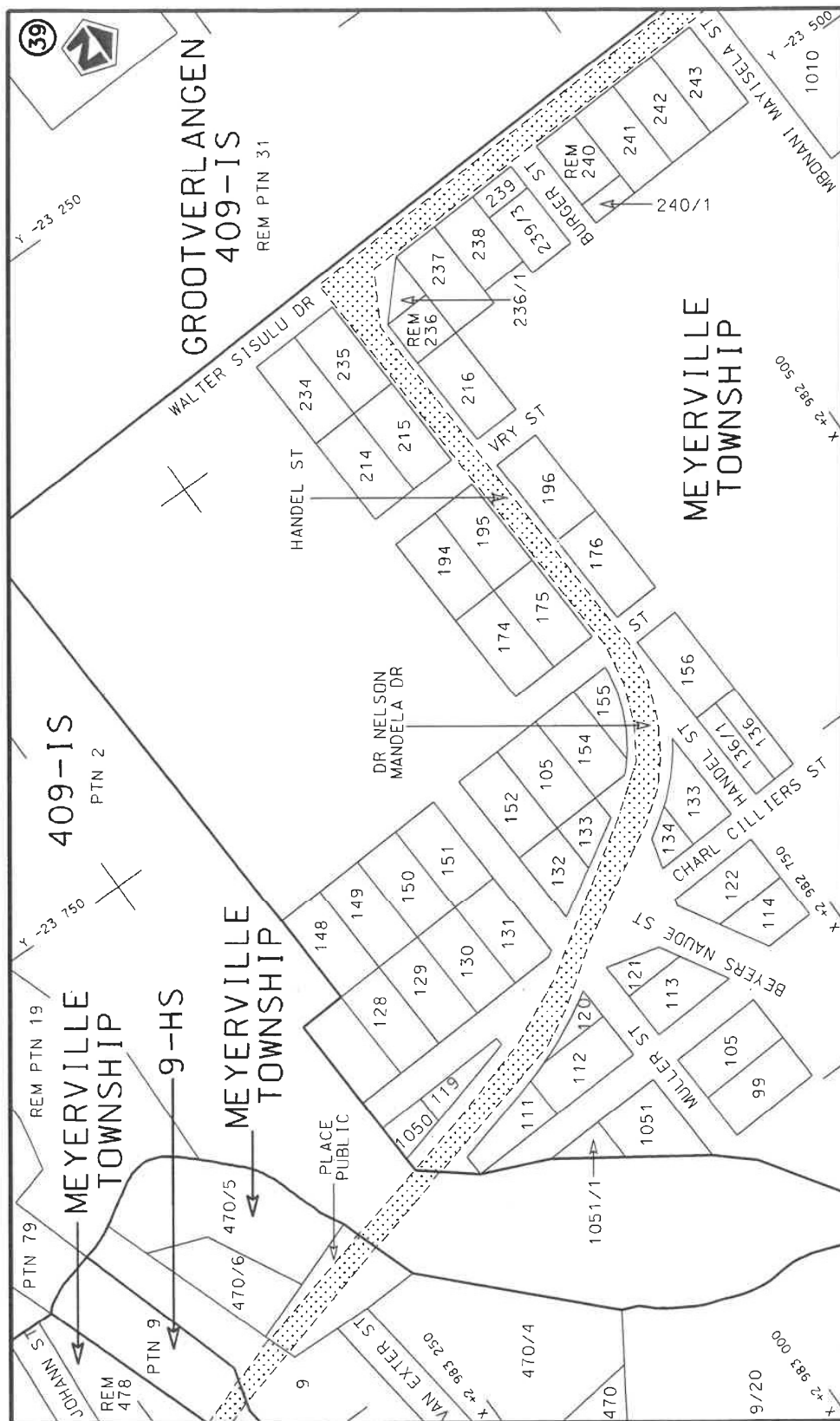
Die Suid Afrikaanse Nasionale Padagentskap MSB Bpk The South African National Roads Agency SOC Ltd	Die figuur getoon The figure shown	steldie padreserwe voor van 'n gedeelte represents the road reserve of a portion van Nasionale Roete R23 of National Route Section	Vel Sheet 12 of 23 Plan P1194/20
---	---------------------------------------	---	--




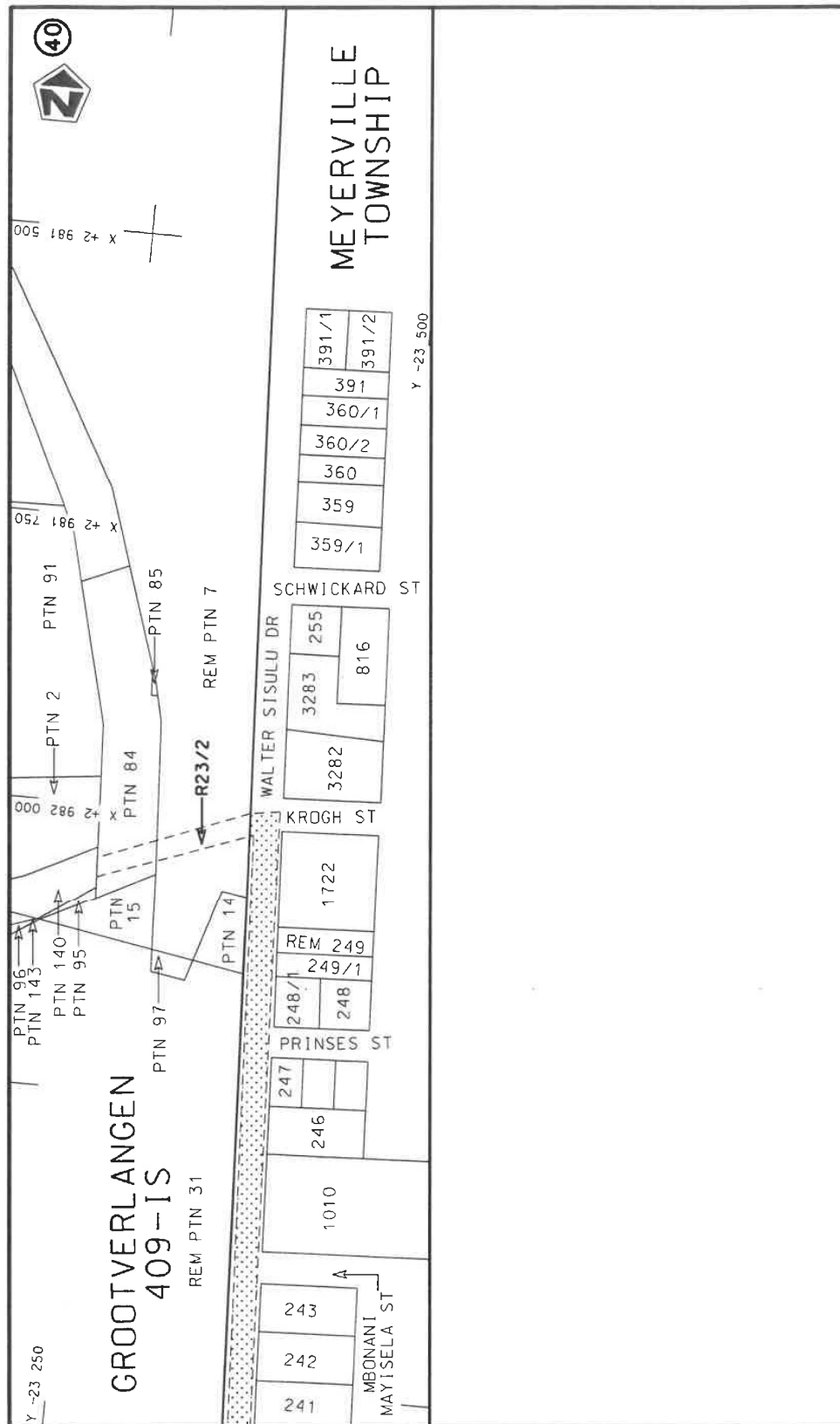
Die Suid Afrikaanse Nasionale Padagentskap MSB Bpk The South African National Roads Agency SOC Ltd	<p>Die figuur getoon</p> <p>The figure shown</p>  <p>stelt die padreserwe voor van 'n gedeelte represents the road reserve of a portion van Nasionale Roete R23 of National Route</p>	<p>Vel Sheet 13 of 23</p> <p>Plan P1194/20</p>
---	---	--




Die Suid-Afrikaanse Nasionale Padagentskap MSB Bpk	Die figuur getoon		stel die padreserwe voor van 'n gedeelte represents the road reserve of a portion	Vel Sheet	14 of	23
The South African National Roads Agency SOC Ltd	The figure shown		van Nasionale Roete of National Route	1	Plan	P1194/20



Die Suid Afrikaanse Nasionale Padagentskap WSB Bpk	Die figuur getoon		stel die padreserwe voor van 'n gedeelte represents the road reserve of a portion van Nasionale Roete R23 of National Route	Vel Sheet	15 of	23
The South African National Roads Agency SOC Ltd	The figure shown			1	Plan	P1194/20



Die Suid Afrikaanse Nasionale Padagentskap MSB Bpk The South African National Roads Agency SOC Ltd	Die figuur getoon The figure shown	 steldie padreserwe voor van 'n gedeelte represents the road reserve of a portion van Nasionale Roete R23 Seksie of National Route 1 Section	Vel Sheet 16 of 23 Plan P1194/20
---	---------------------------------------	---	--

PADRESERWE KOÖRDINATE / ROAD RESERVE CO-ORDINATES									
LINKERKANT/LEFT HAND SIDE					REGTERKANT/RIGHT HAND SIDE				
	Y	X	WG 29 ^a		Y	X			
L1	-86 618.33	3 027 767.49		R1	-86 646.26	3 027 787.28			
L2	-86 622.31	3 027 723.28		R2	-86 655.23	3 027 663.59			
L3	-86 614.93	3 027 550.64		R3	-86 625.17	3 027 479.17			
L4	-86 601.38	3 027 489.89		R4	-86 563.64	3 027 330.89			
L5	-86 527.48	3 027 350.27		R5	-86 414.23	3 027 057.81			
L6	-86 524.82	3 027 345.23		R6	-86 356.49	3 026 959.79			
L7	-86 454.42	3 027 195.28		R7	-86 299.58	3 026 863.66			
L8	-86 342.67	3 026 994.62		R8	-86 252.01	3 026 783.32			
L9	-86 328.90	3 026 969.91		R9	-86 127.31	3 026 597.72			
L10	-86 288.47	3 026 904.19		R10	-86 027.71	3 026 451.25			
L11	-86 225.11	3 026 801.22		R11	-85 860.66	3 026 212.92			
L12	-86 101.56	3 026 616.96		R12	-85 826.10	3 026 163.62			
L13	-86 001.41	3 026 467.60		R13	-85 552.12	3 025 756.50			
L14	-85 817.69	3 026 195.75		R14	-85 545.57	3 025 746.96			
L15	-85 532.62	3 025 778.11		R15	-85 422.39	3 025 567.47			
L16	-85 522.56	3 025 763.38		R16	-85 354.43	3 025 483.43			
L17	-85 414.16	3 025 609.58		R17	-85 293.40	3 025 407.15			
L18	-85 340.84	3 025 515.86		R18	-85 267.25	3 025 379.17			
L19	-85 306.75	3 025 472.27		R19	-85 161.49	3 025 265.98			
L20	-85 241.70	3 025 399.97		R20	-85 040.36	3 025 160.16			
L21	-85 196.38	3 025 349.60		R21	-84 965.12	3 025 095.99			
L22	-85 125.88	3 025 280.13		R22	-84 590.30	3 024 811.77			
L23	-85 011.12	3 025 174.45		R23	-84 198.46	3 024 516.83			
L24	-84 950.17	3 025 123.00		R24	-84 012.65	3 024 377.11			
L25	-84 590.63	3 024 851.90		R25	-83 973.86	3 024 347.94			
L26	-84 244.13	3 024 591.67		R26	-83 685.47	3 024 132.71			
L27	-84 240.16	3 024 588.68		R27	-83 459.54	3 023 962.21			
L28	-84 181.96	3 024 544.83		R28	-83 088.85	3 023 683.80			
L29	-83 984.90	3 024 398.93		R29	-82 878.40	3 023 526.13			
L30	-83 945.25	3 024 369.19		R30	-82 561.68	3 023 288.51			
L31	-83 687.11	3 024 174.80		R31	-82 091.68	3 022 932.36			
L32	-83 489.91	3 024 026.28		R32	-82 020.92	3 022 868.36			
L33	-83 063.37	3 023 704.40		R33	-81 903.71	3 022 763.93			
L34	-82 858.85	3 023 549.85		R34	-81 737.85	3 022 613.04			
L35	-82 659.45	3 023 401.30		R35	-81 596.59	3 022 484.54			
L36	-82 543.05	3 023 314.58		R36	-81 272.72	3 022 182.06			
L37	-82 081.89	3 022 967.66		R37	-81 256.86	3 022 167.28			
L38	-81 944.88	3 022 848.00		R38	-80 843.58	3 021 782.27			
L39	-81 877.03	3 022 786.69		R39	-80 437.50	3 021 403.57			
L40	-81 702.30	3 022 624.75		R40	-80 129.09	3 021 116.72			
L41	-81 572.87	3 022 504.79		R41	-80 054.92	3 021 042.85			
L42	-81 275.66	3 022 227.50		R42	-79 648.65	3 020 587.58			
L43	-80 819.73	3 021 801.81		R43	-79 235.57	3 020 132.63			
L44	-80 633.80	3 021 628.54		R44	-79 231.33	3 020 127.13			
L45	-80 412.68	3 021 422.49		R45	-78 670.61	3 019 380.31			
L46	-80 155.47	3 021 182.52		R46	-78 368.74	3 018 978.11			
L47	-80 039.06	3 021 064.47		R47	-78 207.89	3 018 750.06			
L48	-79 627.84	3 020 608.48		R48	-78 117.21	3 018 570.14			
L49	-79 217.04	3 020 155.05		R49	-78 058.48	3 018 433.45			
L50	-79 211.74	3 020 149.20		R50	-77 991.23	3 018 286.72			
L51	-78 931.02	3 019 776.93		R51	-77 935.03	3 018 166.21			
Vel 17 Sheet					Van 23 of		P1194/20		

PADRESERWE KOÖRDINATE / ROAD RESERVE CO-ORDINATES									
LINKERKANT/LEFT HAND SIDE					REGTERKANT/RIGHT HAND SIDE				
	Y		X	WG 29 ^e		Y		X	
L52	-78 638.85	3	019	390.09	R52	-77 869.97	3	018	026.69
L53	-78 182.33	3	018	782.42	R53	-77 776.18	3	017	879.25
L54	-77 898.08	3	018	163.38	R54	-77 711.40	3	017	777.42
L55	-77 860.88	3	018	082.37	R55	-77 654.98	3	017	689.61
L56	-77 809.99	3	017	984.02	R56	-77 546.87	3	017	521.35
L57	-77 744.12	3	017	891.89	R57	-77 456.18	3	017	336.93
L58	-77 724.93	3	017	851.55	R58	-77 442.44	3	017	308.99
L59	-77 627.28	3	017	714.48	R59	-77 233.60	3	016	894.47
L60	-77 536.71	3	017	567.94	R60	-77 101.05	3	016	695.66
L61	-77 424.63	3	017	339.82	R61	-76 921.96	3	016	490.14
L62	-77 422.01	3	017	334.54	R62	-76 711.79	3	016	299.85
L63	-77 257.94	3	017	002.89	R63	-76 557.71	3	016	191.81
L64	-77 216.61	3	016	926.63	R64	-76 364.40	3	016	068.58
L65	-77 073.51	3	016	711.15	R65	-76 143.04	3	015	925.26
L66	-76 900.31	3	016	513.73	R66	-75 908.24	3	015	784.58
L67	-76 648.00	3	016	293.21	R67	-75 887.98	3	015	774.04
L68	-76 548.78	3	016	221.65	R68	-75 757.95	3	015	709.87
L69	-76 381.69	3	016	115.82	R69	-75 569.90	3	015	671.42
L70	-75 906.24	3	015	818.08	R70	-75 541.08	3	015	665.70
L71	-75 736.35	3	015	753.85	R71	-75 355.43	3	015	628.89
L72	-75 597.26	3	015	724.00	R72	-75 247.50	3	015	590.89
L73	-75 572.09	3	015	717.43	R73	-75 219.59	3	015	575.44
L74	-75 374.12	3	015	665.77	R74	-75 110.26	3	015	514.92
L75	-75 238.50	3	015	622.51	R75	-75 016.18	3	015	448.61
L76	-75 225.13	3	015	615.88	R76	-74 996.55	3	015	430.10
L77	-75 119.74	3	015	563.57	R77	-74 965.58	3	015	400.89
L78	-74 989.77	3	015	467.22	R78	-74 930.30	3	015	367.63
L79	-74 983.50	3	015	461.44	R79	-74 521.67	3	014	941.22
L80	-74 915.54	3	015	398.79	R80	-74 512.66	3	014	931.82
L81	-74 908.17	3	015	391.17	R81	-74 488.90	3	014	909.02
L82	-74 504.59	3	014	973.58	R82	-74 367.86	3	014	792.94
L83	-74 417.95	3	014	883.88	R83	-74 297.37	3	014	731.63
L84	-74 283.39	3	014	760.52	R84	-73 913.05	3	014	442.62
L85	-73 855.47	3	014	438.38	R85	-73 520.65	3	014	148.01
L86	-73 489.05	3	014	163.10	R86	-73 261.69	3	013	972.00
L87	-73 246.95	3	013	999.95	R87	-73 003.77	3	013	827.97
L88	-72 991.29	3	013	856.42	R88	-72 769.13	3	013	696.93
L89	-72 755.86	3	013	724.25	R89	-72 405.87	3	013	491.81
L90	-72 430.23	3	013	541.48	R90	-72 015.45	3	013	272.02
L91	-71 899.90	3	013	244.62	R91	-71 488.36	3	012	976.35
L92	-71 516.16	3	013	028.55	R92	-71 147.37	3	012	785.45
L93	-71 108.86	3	012	800.12	R93	-71 111.29	3	012	765.26
L94	-71 101.73	3	012	796.12	R94	-70 452.08	3	012	395.56
L95	-70 903.11	3	012	684.73	R95	-70 403.10	3	012	368.09
L96	-70 444.78	3	012	426.07	R96	-69 611.80	3	011	745.93
L97	-70 345.62	3	012	362.31	R97	-69 399.34	3	011	580.61
L98	-70 218.78	3	012	263.52	R98	-69 293.15	3	011	497.98
L99	-69 645.85	3	011	812.48	R99	-69 199.95	3	011	435.23
L100	-69 393.38	3	011	614.67	R100	-68 815.93	3	011	223.15
L101	-69 298.96	3	011	542.98	R101	-68 642.72	3	011	127.49
L102	-69 201.03	3	011	473.35	R102	-68 337.78	3	010	960.30
					Vel 18 Van 23 Sheet of P1194/20				

PADRESERWE KOÖRDINATE / ROAD RESERVE CO-ORDINATES									
LINKERKANT/LEFT HAND SIDE					REGTERKANT/RIGHT HAND SIDE				
	Y	X	WG 29º			Y	X		
L103	-68 810.33	3 011 256.29			R103	-67 989.18	3 010 768.96		
L104	-68 634.45	3 011 158.72			R104	-67 841.20	3 010 687.74		
L105	-68 269.38	3 010 957.80			R105	-67 830.99	3 010 682.14		
L106	-67 979.02	3 010 797.88			R106	-67 580.59	3 010 543.06		
L107	-67 911.12	3 010 760.48			R107	-67 484.67	3 010 487.83		
L108	-67 843.61	3 010 723.30			R108	-67 427.09	3 010 444.70		
L109	-67 559.41	3 010 566.62			R109	-67 318.97	3 010 323.28		
L110	-67 513.07	3 010 541.07			R110	-67 037.61	3 009 949.53		
L111	-67 369.45	3 010 442.32			R111	-66 889.79	3 009 753.74		
L112	-67 304.73	3 010 355.36			R112	-66 847.67	3 009 700.27		
L113	-66 989.70	3 009 943.07			R113	-66 720.50	3 009 568.50		
L114	-66 839.94	3 009 741.55			R114	-66 690.00	3 009 542.61		
L115	-66 819.18	3 009 716.06			R115	-66 636.99	3 009 501.14		
L116	-66 792.59	3 009 685.35			R116	-66 592.52	3 009 469.26		
L117	-66 729.74	3 009 622.03			R117	-66 535.51	3 009 433.06		
L118	-66 692.37	3 009 585.84			R118	-66 379.56	3 009 344.13		
L119	-66 641.56	3 009 542.87			R119	-66 096.68	3 009 185.83		
L120	-66 584.21	3 009 501.46			R120	-66 018.35	3 009 142.15		
L121	-66 541.16	3 009 472.27			R121	-65 871.09	3 009 047.79		
L122	-66 360.29	3 009 370.35			R122	-65 851.31	3 009 029.13		
L123	-66 083.87	3 009 214.76			R123	-65 797.80	3 008 970.63		
L124	-65 943.90	3 009 135.27			R124	-65 440.36	3 008 518.54		
L125	-65 861.60	3 009 076.99			R125	-65 403.03	3 008 476.95		
L126	-65 788.75	3 009 009.50			R126	-65 359.68	3 008 436.79		
L127	-65 649.04	3 008 832.89			R127	-65 250.46	3 008 355.78		
L128	-65 397.88	3 008 515.40			R128	-65 155.27	3 008 285.11		
L129	-65 354.60	3 008 473.56			R129	-64 669.04	3 007 930.61		
L130	-65 308.34	3 008 435.37			R130	-64 564.29	3 007 861.44		
L131	-65 234.88	3 008 381.89			R131	-64 485.55	3 007 809.93		
L132	-65 134.18	3 008 308.28			R132	-64 289.71	3 007 722.05		
L133	-64 632.57	3 007 943.01			R133	-64 158.06	3 007 672.69		
L134	-64 539.59	3 007 880.35			R134	-63 956.69	3 007 611.30		
L135	-64 464.56	3 007 837.80			R135	-63 600.98	3 007 502.18		
L136	-64 281.36	3 007 753.24			R136	-63 218.72	3 007 382.73		
L137	-64 141.72	3 007 707.01			R137	-62 949.45	3 007 253.88		
L138	-63 946.25	3 007 646.30			R138	-62 758.01	3 007 238.73		
L139	-63 591.97	3 007 536.36			R139	-62 283.03	3 007 093.69		
L140	-63 236.84	3 007 426.34			R140	-62 178.74	3 007 059.84		
L141	-63 025.84	3 007 360.98			R141	-62 089.13	3 007 019.13		
L142	-62 748.98	3 007 275.57			R142	-62 098.06	3 006 996.86		
L143	-62 273.13	3 007 128.09			R143	-61 984.18	3 006 935.21		
L144	-62 098.82	3 007 059.18			R144	-61 835.05	3 006 840.09		
L145	-62 094.86	3 007 057.18			R145	-61 768.40	3 006 799.31		
L146	-62 077.40	3 007 048.37			R146	-61 633.38	3 006 716.70		
L147	-61 988.20	3 007 001.10			R147	-61 591.91	3 006 692.27		
L148	-61 876.80	3 006 936.97			R148	-61 522.65	3 006 651.48		
L149	-61 740.06	3 006 850.15			R149	-61 486.85	3 006 619.84		
L150	-61 661.21	3 006 799.22			R150	-61 427.39	3 006 579.30		
L151	-61 587.67	3 006 758.88			R151	-61 339.71	3 006 509.14		
L152	-61 547.23	3 006 738.02			R152	-61 298.67	3 006 470.81		
L153	-61 504.88	3 006 707.02			R153	-61 257.64	3 006 432.48		
Vel Sheet					19	Van of	23	P1194/20	

PADRESERWE KOÖRDINATE / ROAD RESERVE CO-ORDINATES									
LINKERKANT/LEFT HAND SIDE					REGTERKANT/RIGHT HAND SIDE				
	Y		X	WG 29 ^a		Y		X	
L154	-61 309.67	3 006	557.49		R154	-61 170.40	3 006	336.37	
L155	-61 211.54	3 006	463.94		R155	-61 155.71	3 006	359.47	
L156	-61 138.71	3 006	386.20		R156	-61 051.03	3 006	228.77	
L157	-61 008.31	3 006	226.10		R157	-60 760.07	3 005	866.43	
L158	-60 744.96	3 005	899.56		R158	-60 768.41	3 005	822.72	
L159	-60 651.50	3 005	796.20		R159	-60 600.92	3 005	705.15	
L160	-60 552.39	3 005	705.42		R160	-60 492.38	3 005	617.75	
L161	-60 460.72	3 005	633.97		R161	-60 321.97	3 005	499.71	
L162	-60 296.35	3 005	531.20		R162	-60 245.33	3 005	466.62	
L163	-60 236.50	3 005	502.39		R163	-60 180.97	3 005	438.83	
L164	-60 140.20	3 005	456.05		R164	-60 089.86	3 005	402.21	
L165	-60 024.52	3 005	416.50		R165	-58 772.12	3 005	041.58	
L166	-59 821.28	3 005	360.03		R166	-58 613.34	3 005	008.53	
L167	-59 320.62	3 005	222.71		R167	-57 779.06	3 004	845.57	
L168	-58 863.93	3 005	097.28		R168	-57 535.77	3 004	797.87	
L169	-58 762.99	3 005	070.00		R169	-57 520.76	3 004	794.94	
L170	-58 589.09	3 005	035.78		R170	-56 992.60	3 004	691.87	
L171	-58 179.83	3 004	955.90		R171	-56 597.86	3 004	613.79	
L172	-57 782.89	3 004	878.20		R172	-56 072.59	3 004	512.07	
L173	-57 765.03	3 004	874.73		R173	-55 843.85	3 004	467.48	
L174	-57 538.58	3 004	830.74		R174	-55 481.37	3 004	391.81	
L175	-57 523.96	3 004	827.89		R175	-55 084.72	3 004	314.86	
L176	-56 984.43	3 004	722.83		R176	-54 676.03	3 004	235.10	
L177	-56 594.07	3 004	646.24		R177	-54 276.52	3 004	157.42	
L178	-56 076.93	3 004	545.31		R178	-54 041.91	3 004	111.78	
L179	-55 835.01	3 004	498.24		R179	-53 920.72	3 004	085.86	
L180	-55 471.99	3 004	430.80		R180	-53 705.83	3 004	026.93	
L181	-55 079.81	3 004	354.53		R181	-53 493.04	3 003	956.48	
L182	-54 626.38	3 004	266.16		R182	-53 145.55	3 003	842.35	
L183	-54 266.42	3 004	194.85		R183	-53 101.36	3 003	827.40	
L184	-53 908.00	3 004	123.67		R184	-52 813.54	3 003	730.03	
L185	-53 789.10	3 004	093.10		R185	-52 717.43	3 003	697.51	
L186	-53 478.02	3 003	992.46		R186	-52 658.32	3 003	677.51	
L187	-53 125.08	3 003	875.74		R187	-52 154.92	3 003	509.40	
L188	-53 097.97	3 003	866.69		R188	-51 984.73	3 003	452.38	
L189	-53 053.37	3 003	851.80		R189	-51 823.21	3 003	398.25	
L190	-52 786.20	3 003	762.61		R190	-51 608.17	3 003	326.51	
L191	-52 690.30	3 003	730.59		R191	-51 461.33	3 003	277.53	
L192	-52 661.16	3 003	720.86		R192	-51 031.69	3 003	133.87	
L193	-52 141.32	3 003	545.60		R193	-50 609.00	3 002	992.78	
L194	-51 987.44	3 003	494.69		R194	-50 234.46	3 002	866.96	
L195	-51 809.74	3 003	435.91		R195	-50 058.01	3 002	797.66	
L196	-51 461.50	3 003	319.55		R196	-49 934.79	3 002	741.44	
L197	-51 020.67	3 003	171.85		R197	-49 789.36	3 002	666.13	
L198	-50 590.67	3 003	027.80		R198	-49 693.18	3 002	610.98	
L199	-50 218.73	3 002	903.47		R199	-49 559.47	3 002	525.97	
L200	-50 043.80	3 002	834.90		R200	-49 484.54	3 002	474.32	
L201	-49 917.58	3 002	777.72		R201	-49 081.39	3 002	182.17	
L202	-49 793.57	3 002	714.29		R202	-48 836.26	3 002	005.38	
L203	-49 672.58	3 002	645.08		R203	-48 590.17	3 001	829.08	
L204	-49 537.37	3 002	559.07		R204	-48 208.20	3 001	592.73	
Vel Sheet					20	Van of		23	P1194/20

PADRESERWE KOÖRDINATE / ROAD RESERVE CO-ORDINATES									
LINKERKANT/LEFT HAND SIDE					REGTERKANT/RIGHT HAND SIDE				
	Y		X	WG 29°		Y		X	
L205	-49 466.71	3 002	510.00		R205	-47 992.75	3 001	459.61	
L206	-49 081.32	3 002	230.53		R206	-47 817.31	3 001	351.23	
L207	-48 828.50	3 002	046.71		R207	-47 460.28	3 001	136.10	
L208	-48 610.67	3 001	890.58		R208	-47 207.20	3 000	968.98	
L209	-48 191.38	3 001	628.77		R209	-46 890.33	3 000	760.58	
L210	-47 971.94	3 001	493.36		R210	-46 877.58	3 000	752.53	
L211	-47 777.04	3 001	373.08		R211	-46 490.04	3 000	497.37	
L212	-47 442.44	3 001	165.92		R212	-46 302.55	3 000	365.48	
L213	-47 178.90	3 000	997.99		R213	-46 194.15	3 000	278.60	
L214	-46 886.38	3 000	805.44		R214	-46 101.14	3 000	197.07	
L215	-46 871.91	3 000	795.92		R215	-46 041.04	3 000	140.60	
L216	-46 469.45	3 000	531.56		R216	-45 919.47	3 000	016.25	
L217	-46 264.10	3 000	386.32		R217	-45 647.45	2 999	706.74	
L218	-46 168.58	3 000	309.08		R218	-45 539.69	2 999	582.32	
L219	-46 074.65	3 000	227.01		R219	-45 410.55	2 999	433.02	
L220	-46 017.30	3 000	173.08		R220	-45 218.78	2 999	212.65	
L221	-45 884.70	3 000	037.63		R221	-45 088.36	2 999	062.78	
L222	-45 821.12	2 999	965.01		R222	-44 958.33	2 998	904.95	
L223	-45 608.03	2 999	721.62		R223	-44 893.48	2 998	816.05	
L224	-45 339.31	2 999	412.09		R224	-44 791.11	2 998	655.98	
L225	-45 148.12	2 999	191.63		R225	-44 697.17	2 998	488.50	
L226	-45 042.89	2 999	070.05		R226	-44 474.06	2 998	089.35	
L227	-44 932.17	2 998	936.21		R227	-44 259.90	2 997	704.90	
L228	-44 859.74	2 998	837.94		R228	-44 104.78	2 997	463.79	
L229	-44 755.54	2 998	673.83		R229	-43 953.65	2 997	252.33	
L230	-44 661.50	2 998	505.87		R230	-43 693.06	2 996	886.50	
L231	-44 436.56	2 998	104.86		R231	-43 408.53	2 996	527.73	
L232	-44 223.87	2 997	724.75		R232	-43 123.02	2 996	172.93	
L233	-44 073.39	2 997	488.22		R233	-42 837.83	2 995	818.19	
L234	-43 921.33	2 997	274.78		R234	-42 744.64	2 995	712.31	
L235	-43 661.24	2 996	910.61		R235	-42 628.06	2 995	602.99	
L236	-43 376.98	2 996	552.42		R236	-42 501.98	2 995	505.43	
L237	-43 092.91	2 996	198.79		R237	-42 368.73	2 995	408.54	
L238	-42 806.36	2 995	842.98		R238	-42 276.08	2 995	341.18	
L239	-42 712.00	2 995	735.64		R239	-42 132.36	2 995	236.69	
L240	-42 601.29	2 995	632.77		R240	-41 674.82	2 994	905.54	
L241	-42 479.82	2 995	538.46		R241	-41 379.56	2 994	716.85	
L242	-42 320.32	2 995	422.77		R242	-40 872.08	2 994	464.18	
L243	-42 279.09	2 995	392.87		R243	-40 392.79	2 994	236.38	
L244	-42 108.91	2 995	269.44		R244	-39 961.74	2 994	019.96	
L245	-41 669.09	2 994	950.51		R245	-39 741.50	2 993	893.76	
L246	-41 360.81	2 994	752.52		R246	-39 347.51	2 993	668.96	
L247	-40 898.43	2 994	522.27		R247	-38 950.47	2 993	441.90	
L248	-40 855.32	2 994	500.80		R248	-38 577.77	2 993	228.97	
L249	-40 374.04	2 994	271.79		R249	-38 553.35	2 993	215.02	
L250	-39 944.36	2 994	056.61		R250	-38 155.98	2 992	987.80	
L251	-39 715.54	2 993	925.54		R251	-37 755.77	2 992	765.84	
L252	-39 327.53	2 993	703.65		R252	-37 349.92	2 992	551.63	
L253	-38 931.30	2 993	477.34		R253	-36 946.01	2 992	338.45	
L254	-38 551.59	2 993	260.07		R254	-36 736.71	2 992	227.65	
L255	-38 532.25	2 993	249.01		R255	-36 601.48	2 992	150.07	
					<div> <div>Vel</div> <div>21</div> <div>Van</div> <div>23</div> <div>Sheet</div> <div>of</div> <div>P1194/20</div> </div>				

PADRESERWE KOÖRDINATE / ROAD RESERVE CO-ORDINATES									
LINKERKANT/LEFT HAND SIDE					REGTERKANT/RIGHT HAND SIDE				
	Y	X	WG 29°			Y	X		
L256	-38 136.24	2 993 022.88		R256	-36 512.39	2 992 084.32			
L257	-37 736.42	2 992 801.05		R257	-36 418.39	2 992 002.24			
L258	-37 332.29	2 992 587.73		R258	-36 350.24	2 991 929.43			
L259	-36 927.13	2 992 373.80		R259	-36 292.02	2 991 856.35			
L260	-36 716.78	2 992 261.49		R260	-36 054.50	2 991 516.10			
L261	-36 624.09	2 992 211.12		R261	-35 840.56	2 991 210.04			
L262	-36 483.71	2 992 113.99		R262	-35 785.74	2 991 138.84			
L263	-36 394.56	2 992 035.21		R263	-35 676.97	2 991 030.04			
L264	-36 320.28	2 991 956.10		R264	-35 670.61	2 991 025.02			
L265	-36 261.02	2 991 882.19		R265	-35 602.52	2 990 971.24			
L266	-35 989.63	2 991 493.80		R266	-35 445.20	2 990 866.67			
L267	-35 806.65	2 991 230.38		R267	-35 053.12	2 990 606.30			
L268	-35 764.50	2 991 177.38		R268	-34 840.03	2 990 465.16			
L269	-35 640.77	2 991 045.33		R269	-34 721.12	2 990 386.29			
L270	-35 420.40	2 990 895.44		R270	-34 564.37	2 990 274.21			
L271	-35 410.65	2 990 910.41		R271	-34 420.14	2 990 155.67			
L272	-35 374.86	2 990 888.06		R272	-34 296.03	2 990 038.49			
L273	-35 315.91	2 990 844.59		R273	-34 253.00	2 989 992.63			
L274	-34 401.33	2 990 208.79		R274	-34 218.30	2 989 955.65			
L275	-34 341.36	2 990 161.50		R275	-34 171.53	2 989 905.76			
L276	-34 273.98	2 990 108.37		R276	-34 053.17	2 989 763.93			
L277	-34 250.50	2 990 089.85		R277	-33 853.76	2 989 519.15			
L278	-34 266.18	2 990 065.29		R278	-33 755.82	2 989 398.70			
L279	-34 189.01	2 989 985.31		R279	-33 605.41	2 989 213.69			
L280	-34 128.91	2 989 915.10		R280	-33 377.01	2 988 933.12			
L281	-34 027.14	2 989 789.27		R281	-33 176.32	2 988 686.79			
L282	-33 816.29	2 989 536.42		R282	-33 099.74	2 988 593.10			
L283	-33 709.93	2 989 405.79		R283	-32 975.24	2 988 440.79			
L284	-33 573.00	2 989 237.61		R284	-32 871.43	2 988 332.99			
L285	-33 345.87	2 988 958.56		R285	-32 799.49	2 988 273.81			
L286	-33 145.08	2 988 712.06		R286	-32 773.66	2 988 252.56			
L287	-33 041.02	2 988 584.78		R287	-32 694.35	2 988 198.13			
L288	-33 036.37	2 988 579.09		R288	-32 445.47	2 988 047.87			
L289	-32 944.53	2 988 466.75		R289	-32 302.58	2 987 961.82			
L290	-32 845.37	2 988 363.66		R290	-32 085.45	2 987 831.05			
L291	-32 777.45	2 988 306.05		R291	-31 804.51	2 987 661.48			
L292	-32 672.75	2 988 231.84		R292	-31 797.46	2 987 657.22			
L293	-32 424.49	2 988 081.85		R293	-31 777.63	2 987 645.25			
L294	-32 318.97	2 988 018.26		R294	-31 771.00	2 987 641.26			
L295	-32 063.21	2 987 864.12		R295	-31 380.01	2 987 406.03			
L296	-31 742.32	2 987 670.69		R296	-31 037.45	2 987 199.93			
L297	-31 357.65	2 987 438.45		R297	-30 739.40	2 987 020.63			
L298	-31 140.20	2 987 307.84		R298	-30 632.37	2 986 956.35			
L299	-31 017.30	2 987 234.03		R299	-30 571.16	2 986 922.83			
L300	-30 699.32	2 987 042.57		R300	-30 445.75	2 986 854.15			
L301	-30 596.68	2 986 981.75		R301	-30 033.87	2 986 656.64			
L302	-30 427.23	2 986 889.29		R302	-29 877.83	2 986 582.82			
L303	-30 020.35	2 986 694.63		R303	-29 579.18	2 986 440.63			
L304	-29 864.45	2 986 620.36		R304	-29 301.00	2 986 307.02			
L305	-29 562.69	2 986 476.78		R305	-29 153.97	2 986 231.24			
L306	-29 284.28	2 986 343.69		R306	-28 953.91	2 986 107.56			
Vel Sheet					22	Van of	23	P1194/20	

PADRESERVE KOÖRDINATE / ROAD RESERVE CO-ORDINATES									
LINKERKANT/LEFT HAND SIDE					REGTERKANT/RIGHT HAND SIDE				
	Y		X	WG 29 ^a		Y		X	
L307	-29 154.80	2	986	276.13	R307	-28 702.70	2	985	945.58
L308	-29 144.17	2	986	270.58	R308	-28 451.41	2	985	782.87
L309	-28 931.67	2	986	145.05	R309	-28 199.79	2	985	620.00
L310	-28 696.05	2	985	992.48	R310	-28 032.22	2	985	511.19
L311	-28 433.44	2	985	823.22	R311	-27 772.51	2	985	343.21
L312	-28 174.05	2	985	654.84	R312	-27 520.92	2	985	180.14
L313	-28 008.71	2	985	548.09	R313	-27 439.10	2	985	123.56
L314	-27 693.56	2	985	339.09	R314	-27 364.50	2	985	055.89
L315	-27 485.65	2	985	204.58	R315	-27 299.22	2	984	979.87
L316	-27 477.92	2	985	200.08	R316	-27 241.22	2	984	921.84
L317	-27 377.94	2	985	138.98	R317	-27 214.46	2	984	904.48
L318	-27 327.55	2	985	089.50	R318	-27 176.88	2	984	887.69
L319	-27 282.07	2	985	033.93	R319	-27 146.40	2	984	878.02
L320	-27 263.51	2	985	011.25	R320	-27 075.32	2	984	862.60
L321	-27 215.46	2	984	961.74	R321	-27 024.29	2	984	866.79
L322	-27 170.81	2	984	930.88	R322	-26 982.34	2	984	870.24
L323	-27 105.72	2	984	914.72	R323	-26 962.89	2	984	871.84
L324	-27 098.80	2	984	915.10	R324	-26 931.41	2	984	877.08
L325	-27 042.80	2	984	918.15	R325	-26 845.93	2	984	891.30
L326	-26 990.46	2	984	924.02	R326	-26 808.04	2	984	884.09
L327	-26 883.21	2	984	932.73	R327	-26 756.37	2	984	874.26
L328	-26 786.54	2	984	929.25	R328	-26 369.34	2	984	691.59
L329	-26 783.71	2	984	929.15	R1X	-86 652.23	3	027	725.44
L330	-26 350.78	2	984	726.92	R2X	-86 683.91	3	027	580.41
L1X	-86 620.40	3	027	744.46	R136X	-63 026.45	3	007	322.65
L1Y	-86 621.13	3	027	736.40	R136Y	-62 990.62	3	007	265.38
L2X	-86 625.15	3	027	648.64	R136Z	-62 981.79	3	007	243.44
L2Y	-86 622.88	3	027	610.29	R137X	-62 951.60	3	007	260.54
L146X	-62 064.78	3	007	041.69	R137Y	-62 950.13	3	007	272.71
L146Y	-62 031.41	3	007	024.00	R137Z	-62 919.87	3	007	289.33
L146Z	-62 012.48	3	007	013.97	R142X	-62 080.90	3	006	987.66
L147X	-61 959.15	3	006	984.63	R142Y	-62 049.73	3	006	971.00
L147Y	-61 923.93	3	006	964.66	R142Z	-62 016.94	3	006	952.94
L147Z	-61 890.27	3	006	945.52	R143A	-61 948.91	3	006	912.77
L148A	-61 860.59	3	006	926.68	R143X	-61 931.73	3	006	901.81
L148X	-61 841.12	3	006	914.32	R143Y	-61 899.51	3	006	881.20
L148Y	-61 807.84	3	006	893.18	R143Z	-61 868.26	3	006	861.27
L148Z	-61 773.27	3	006	871.23	R144X	-61 801.90	3	006	819.81
L149X	-61 708.25	3	006	829.60	R145A	-61 744.20	3	006	784.51
L153X	-61 481.78	3	006	689.32	R145X	-61 724.59	3	006	772.51
					R145Y	-61 701.75	3	006	758.53
					R145Z	-61 669.11	3	006	738.56
					R156X	-61 039.19	3	006	214.00
					R157X	-60 775.27	3	005	848.72
					R157Y	-60 792.08	3	005	851.66
					R157Z	-60 796.66	3	005	827.09
					R158X	-60 741.21	3	005	814.52
					R158Y	-60 711.92	3	005	812.58

DEPARTMENT OF TRANSPORT**NO. 4056****10 November 2023****DECLARATION AMENDMENT OF NATIONAL ROAD R730 SECTION 3**

AMENDMENT OF DECLARATION No. 350 OF 2016

By virtue of section 40(1)(b) of The South African National Roads Agency Limited and National Roads Act 1998 (Act No. 7 of 1998), I hereby amend Declaration No. 350 of 2016 by substituting it in its entirety with the accompanying sheets 1 to 9 of Plan No. P1233/23.

(National Road R730 Section 3: Thabong Interchange – R34 Junction (Odendaalsrus))
MINISTER OF TRANSPORT

DEPARTEMENT VAN VERVOER

NO. 4056

10 November 2023

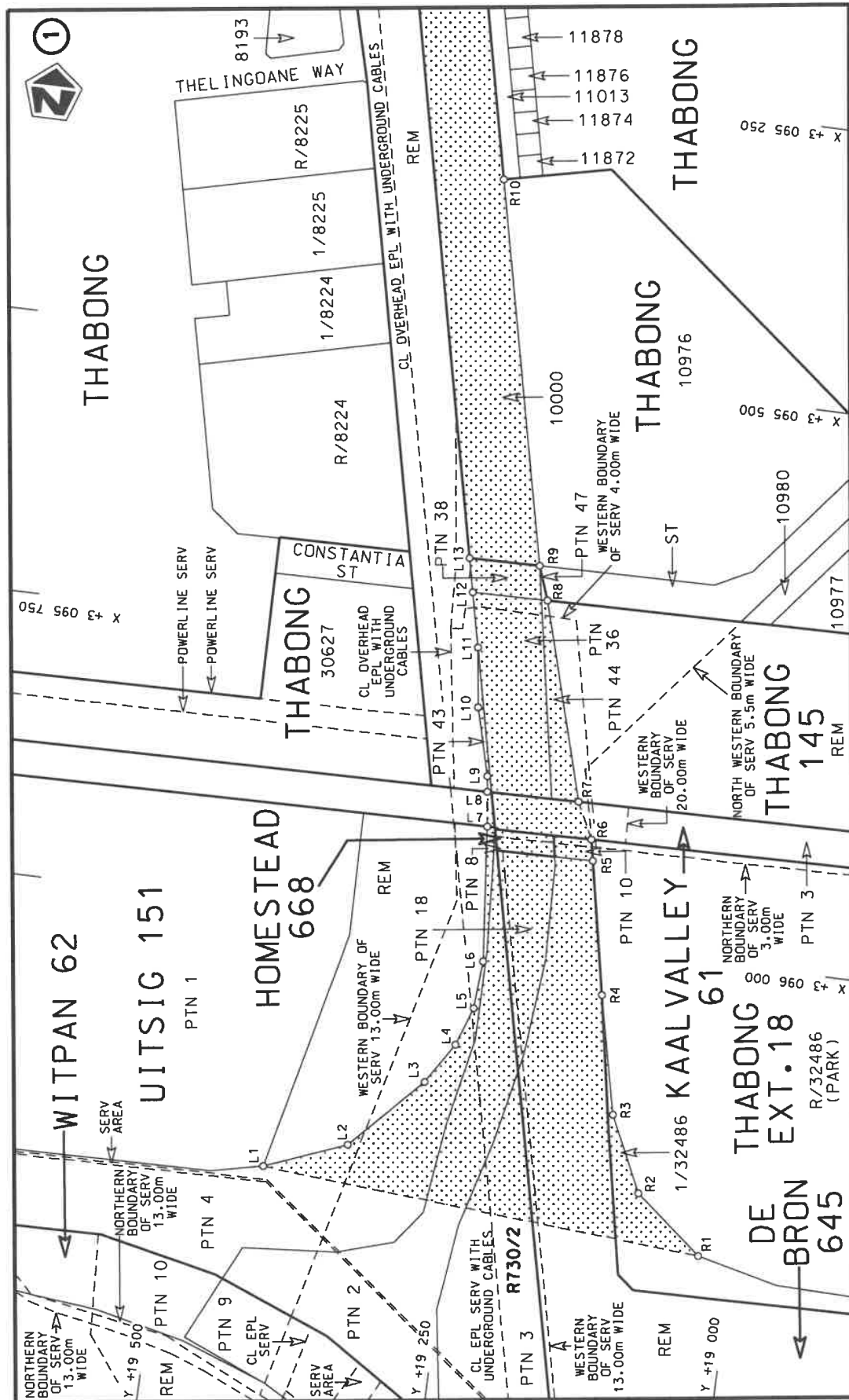
VERKLARING WYSIGING VAN NASIONALE PAD R730 SEKSIE 3

WYSIGING VAN VERKLARING No. 350 VAN 2016

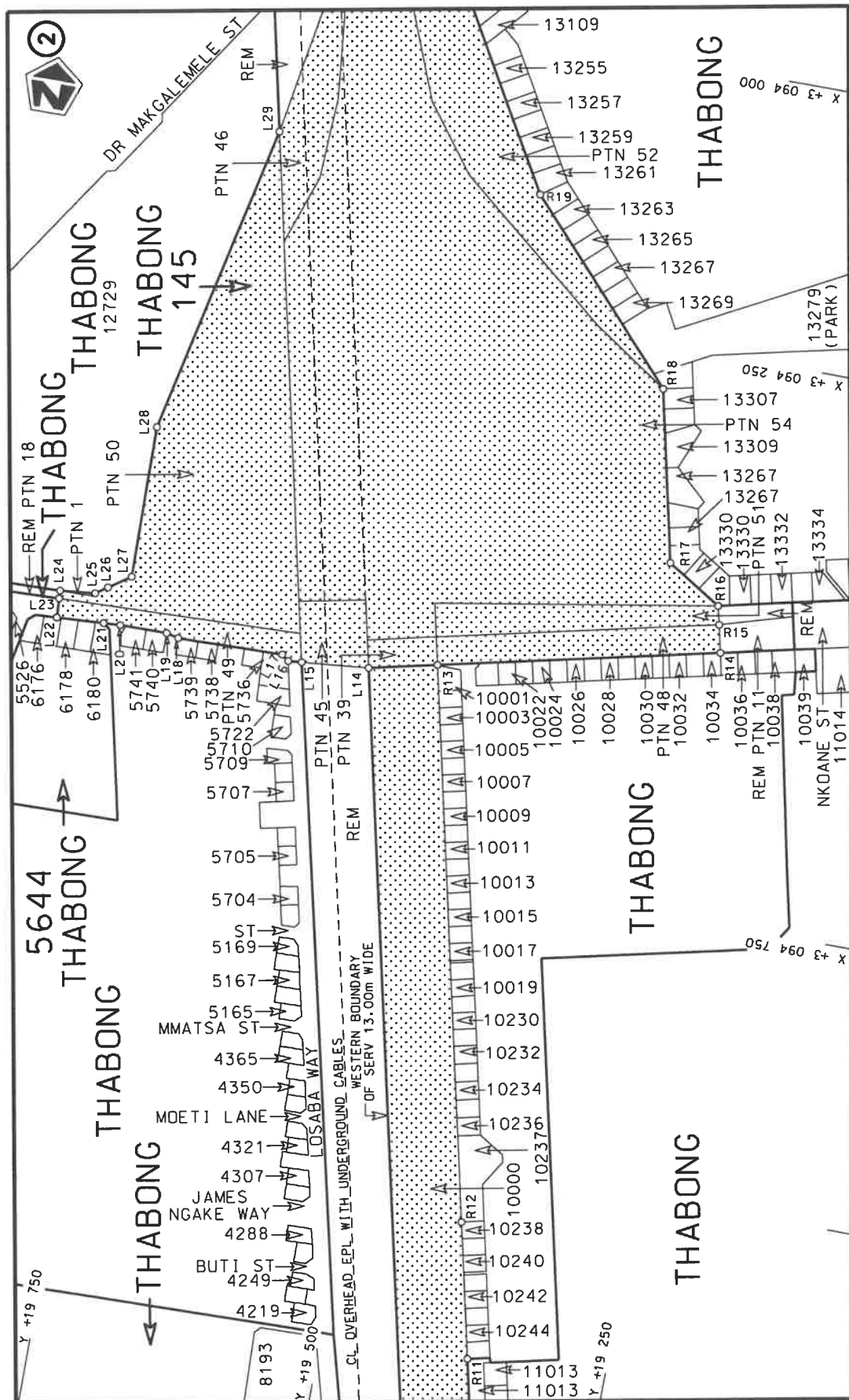
Kragtens Artikel 40(1)(b) van die Suid Afrikaanse Nasionale Padagentskap Beperk en Nasionale Paaie Wet 1998 (Wet No.7 van 1998), wysig ek hiermee Verklaring No. 350 van 2016 deur dit in sy geheel te vervang met bygaande velle 1 tot 9 van Plan No. P1233/23.


(Nasionale Pad R730 Seksie 3: Thabong Interseksie – R34 Aansluiting (Odendaalsrus))

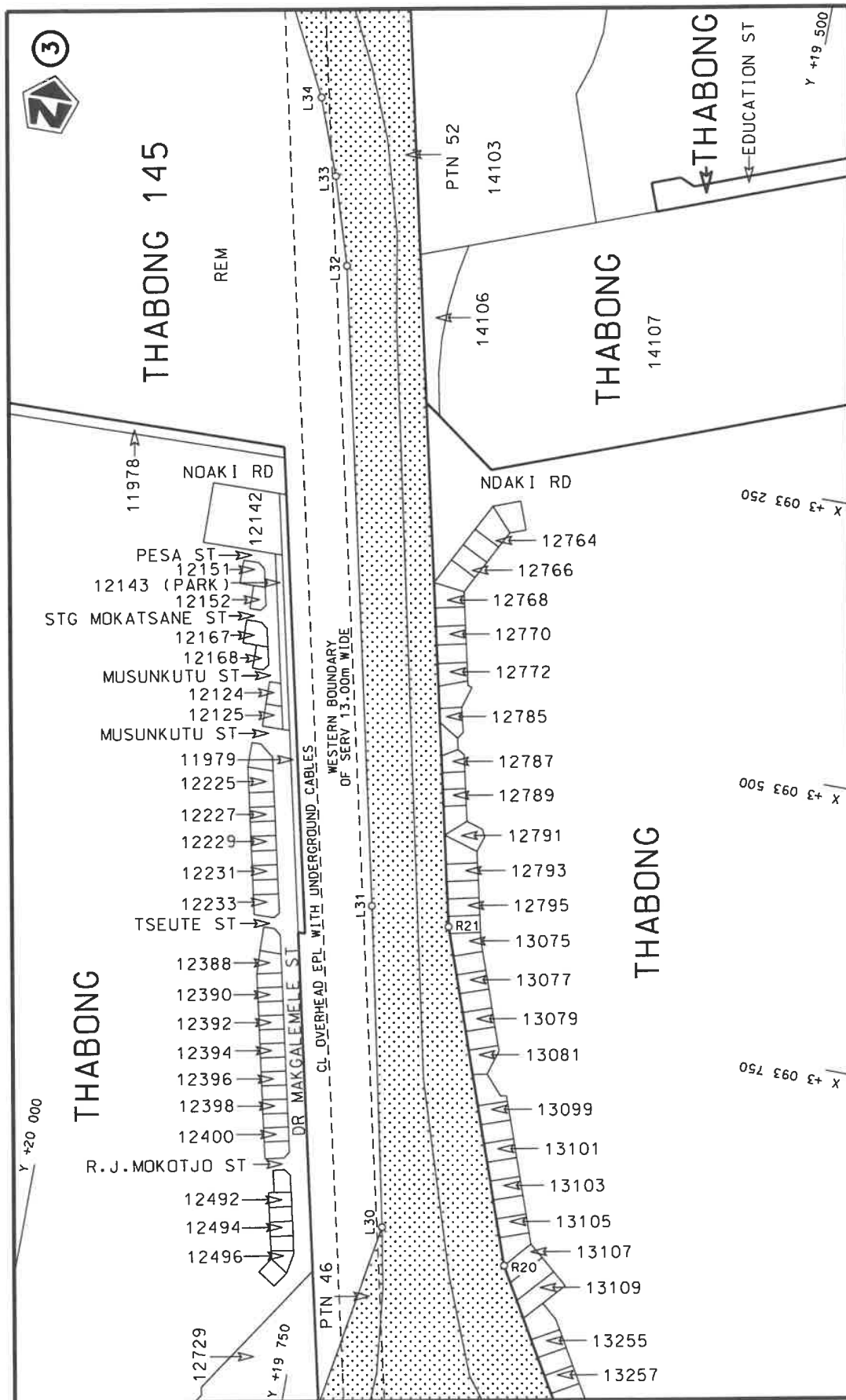

MINISTER VAN VERVOER



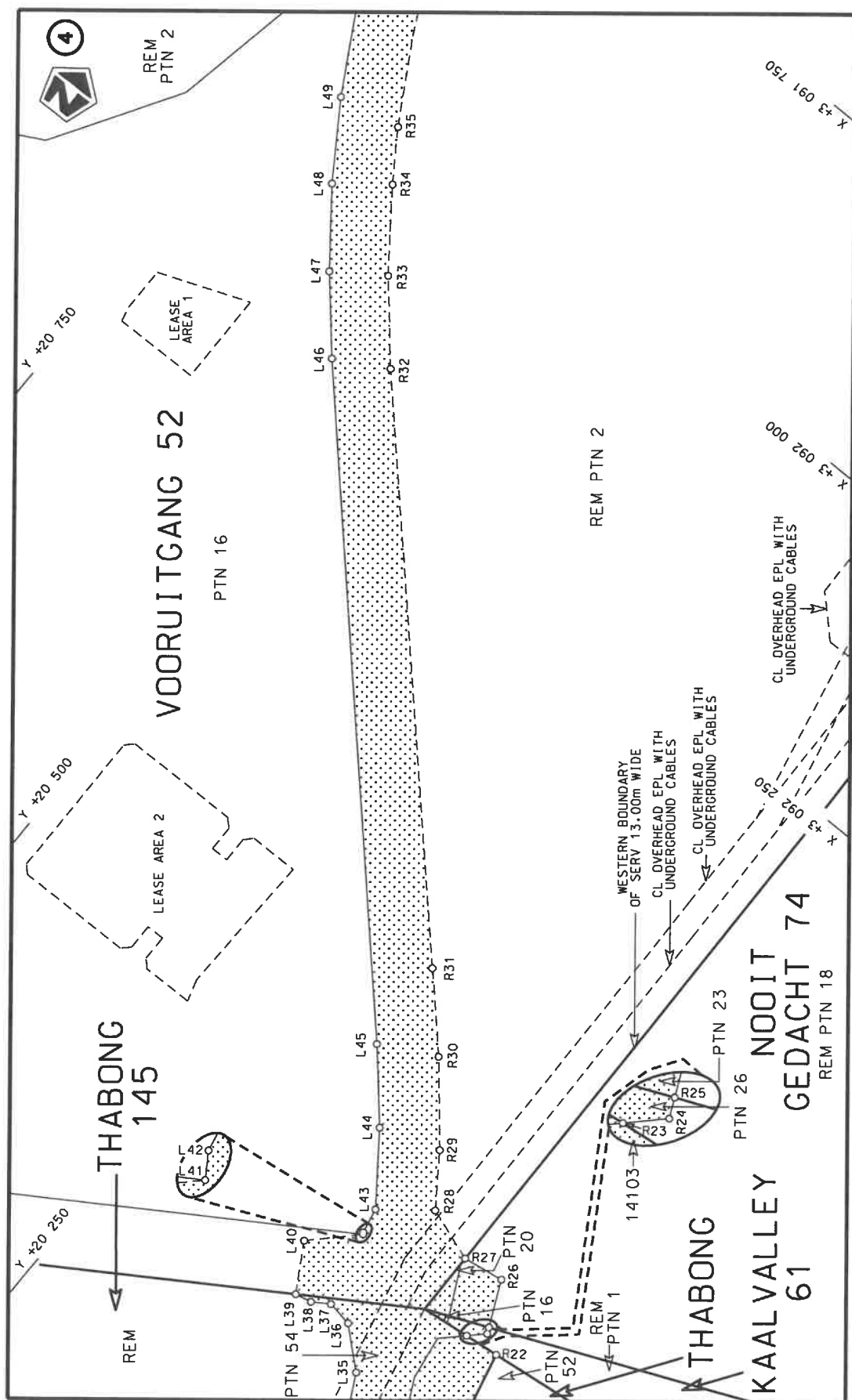
Die Suid Afrikaanse Nasionale Padagentskap MSB Bpk The South African National Roads Agency SOC Ltd	Die figuur getoon The figure shown	stel die padreserwe voor van 'n gedeelte represents the road reserve of a portion van Nasionale Roete R730 of National Route	Vel Sheet 1 of 9	Plan P1233/23
---	---------------------------------------	---	---------------------	------------------



Die Suid Afrikaanse Nasionale Padagentskap MSB Bpk The South African National Roads Agency SOC Ltd	Die figuur getoon The figure shown		steldie podreserwe voor van 'n gedeelte represents the road reserve of a portion van Nasionale Roete R730 of National Route	Vel Sheet 2 of 9
			3 Seksie Section	Plan P1233/23



Vel Sheet 3 of 9	steldie padreserwe voor van 'n gedeelte represents the road reserve of a portion van Nasionale Roete R730 Seksie of National Route Section	Die Suid Afrikaanse Nasionale Padagentskop MSB Bpk The South African National Roads Agency SOC Ltd
Plan P1233/23	Die figuur getoon The figure shown	

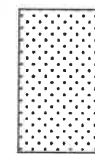


Die Suid Afrikaanse Nasionale Padagentskap MSB Bpk

The South African National Roads Agency SOC Ltd

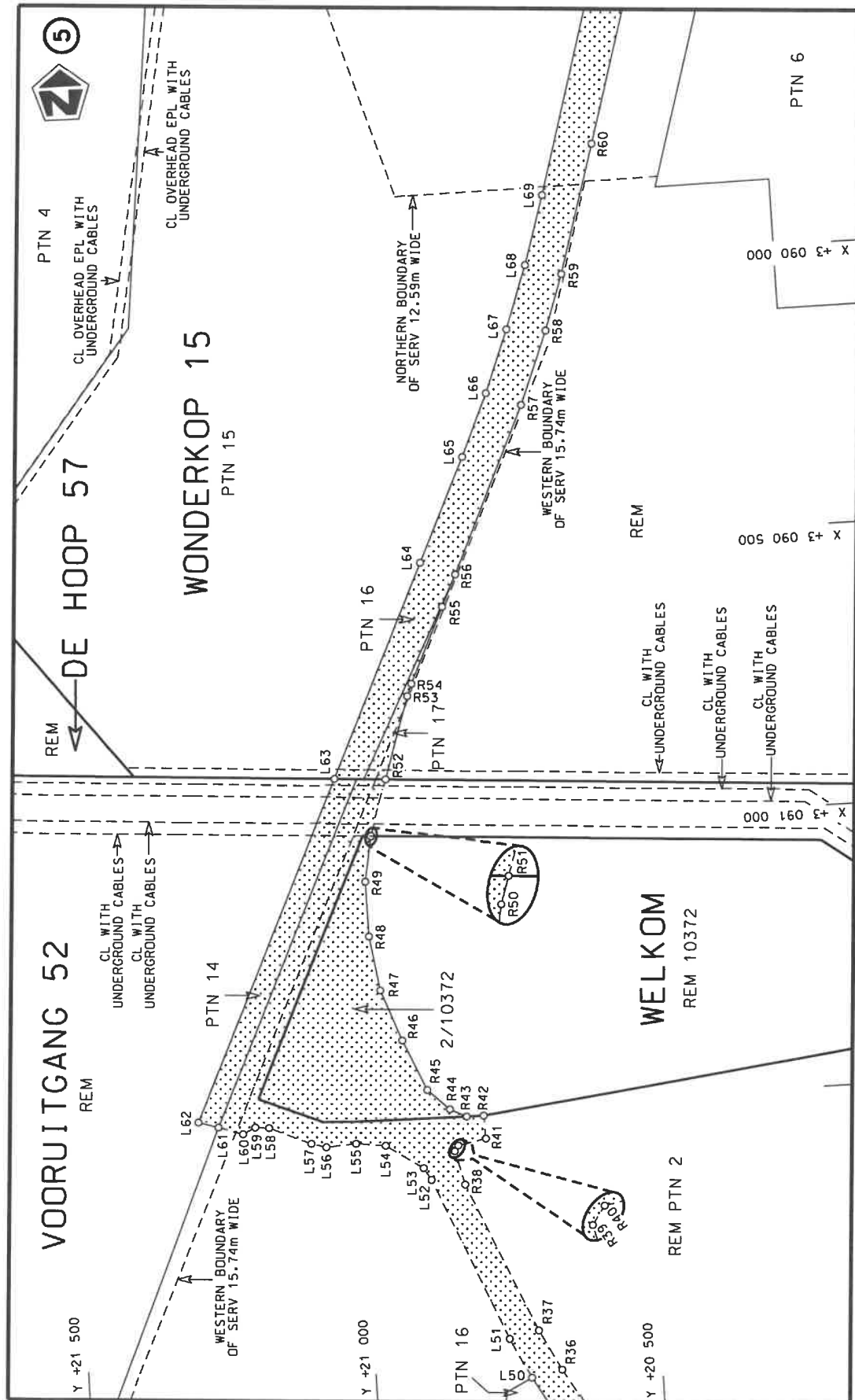
Die figuur getoon

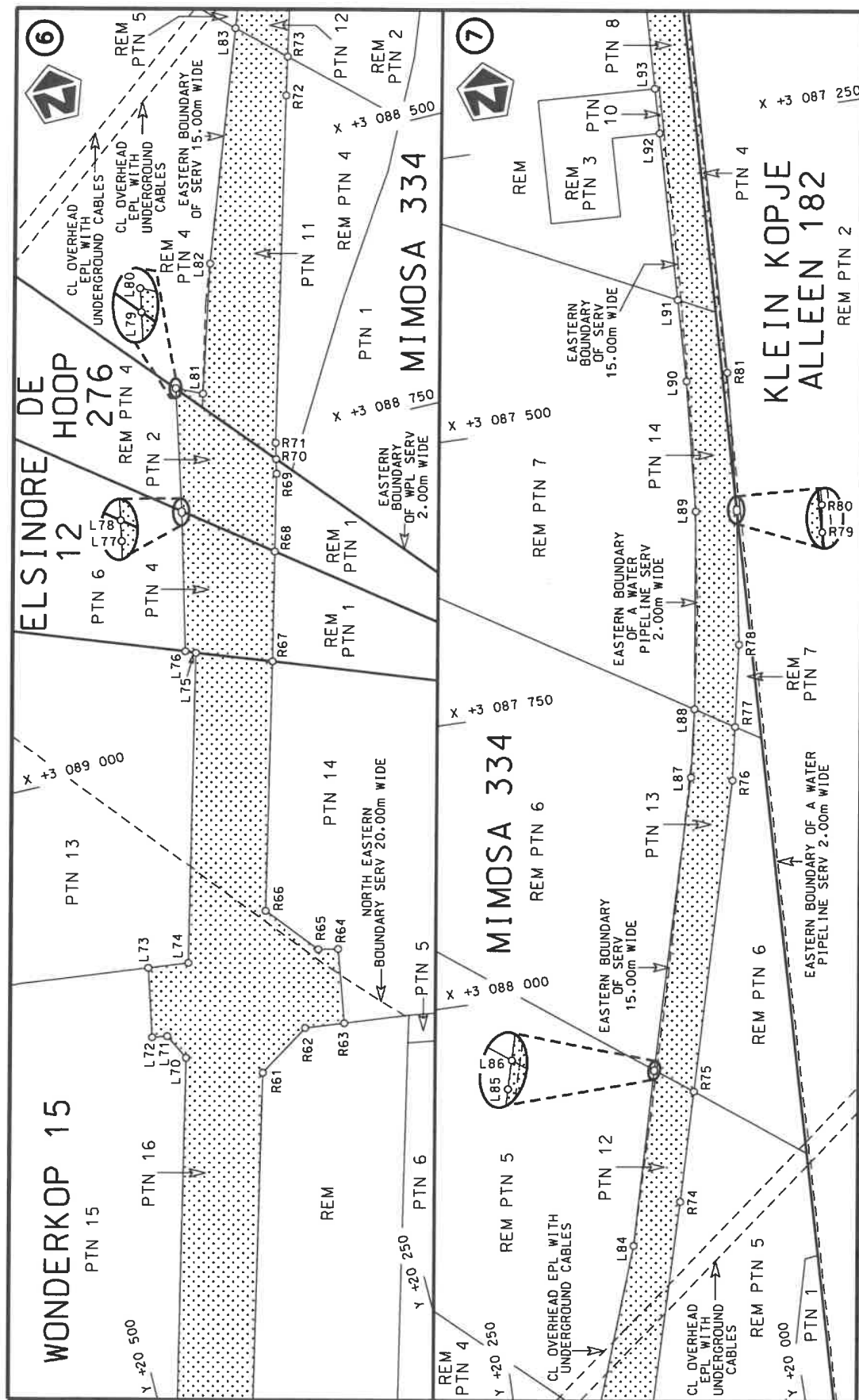
The figure shown



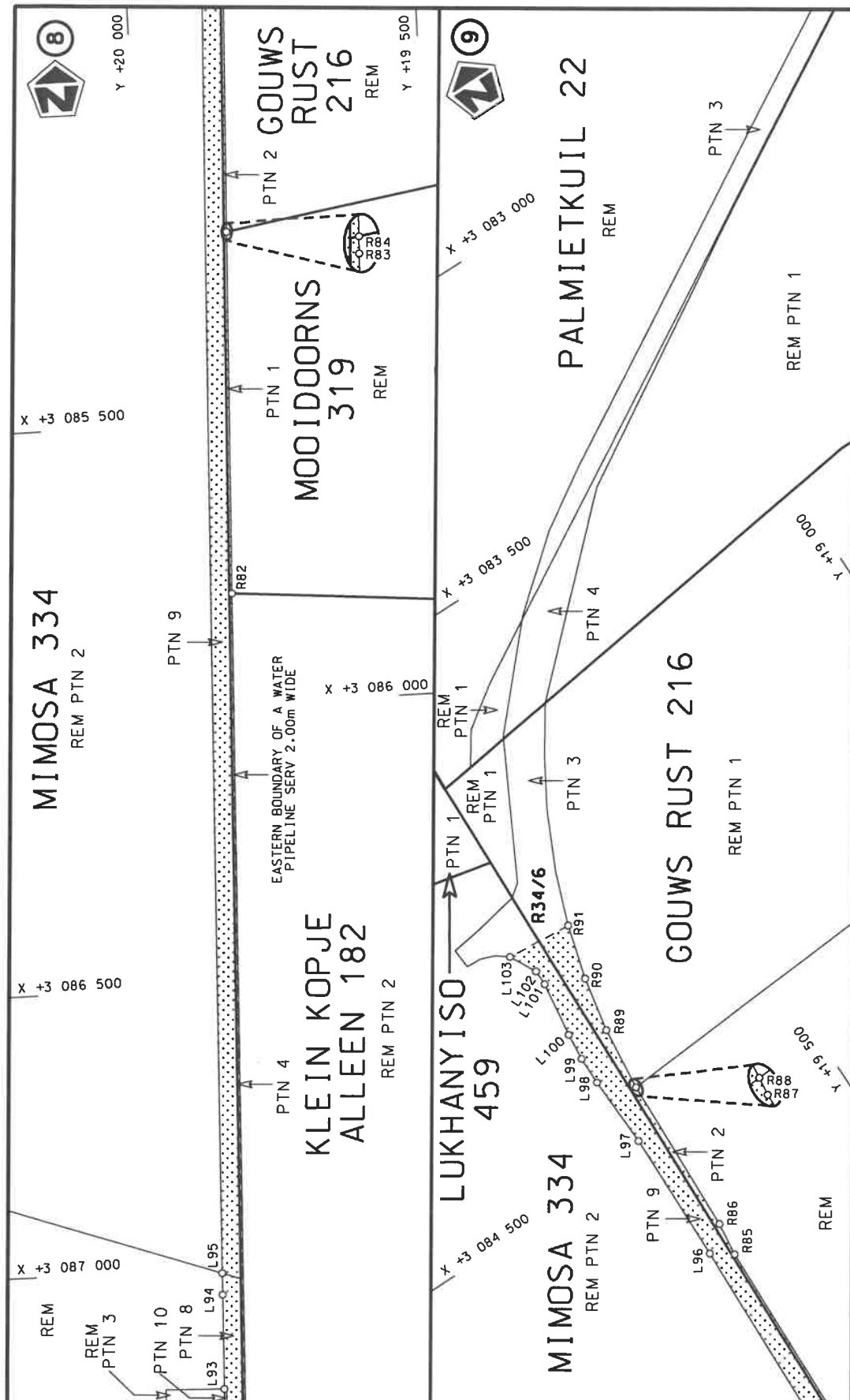
steeldie podreserwe voor van 'n gedeelte
represents the road reserve of a portion
van Nasionale Roete R730 Sektie
of National Route Section

Vel
Sheet 4 of 9Plan
P1233/23



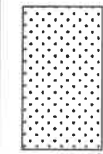


Die Suid Afrikaanse Nasionale Padagentskap MSB Bpk The South African National Roads Agency SOC Ltd	Die figuur getoon The figure shown	steldie padreserwe voor van 'n gedeelte represents the road reserve of a portion van Nasionale Roete R730 of National Route	Vel Sheet	6 of	9
			Plan	P1233/23	



Die Suid Afrikaanse Nasionale Padagentskap MSB Bpk
The South African National Roads Agency SOC Ltd

Die figuur getoon
The figure shown



stelt die padreserwe voor van 'n gedeelte
represents the road reserve of a portion
van Nasionale Roete R730 Seksie
of National Route R730 Section

Vel
Sheet 7 van 9
Plan P1233/23

PADRESERWE KOÖRDINATE / ROAD RESERVE CO-ORDINATES									
LINKERKANT/LEFT HAND SIDE					REGTERKANT/RIGHT HAND SIDE				
	Y	X	WG 27°			Y	X		
L1	19 417.54	3 096 230.23		R1	19 029.82	3 096 260.75			
L2	19 346.65	3 096 201.86		R2	19 089.27	3 096 212.15			
L3	19 287.03	3 096 137.71		R3	19 120.58	3 096 145.56			
L4	19 264.48	3 096 101.31		R4	19 144.00	3 096 041.08			
L5	19 252.78	3 096 067.00		R5	19 167.39	3 095 923.53			
L6	19 250.14	3 096 024.55		R6	19 171.11	3 095 904.84			
L7	19 262.13	3 095 904.94		R7	19 186.44	3 095 872.93			
L8	19 266.08	3 095 874.31		R8	19 236.46	3 095 698.68			
L9	19 267.87	3 095 860.48		R9	19 247.24	3 095 668.85			
L10	19 283.79	3 095 800.75		R10	19 323.24	3 095 332.05			
L11	19 290.89	3 095 747.94		R11	19 360.09	3 095 169.17			
L12	19 301.76	3 095 699.80		R12	19 387.07	3 095 050.05			
L13	19 308.52	3 095 669.91		R13	19 496.82	3 094 565.55			
L14	19 555.34	3 094 578.79		R14	19 254.74	3 094 510.82			
L15	19 613.39	3 094 584.13		R15	19 260.26	3 094 486.40			
L16	19 625.16	3 094 585.21		R16	19 264.19	3 094 470.02			
L17	19 631.25	3 094 580.44		R17	19 312.06	3 094 439.82			
L18	19 723.66	3 094 582.24		R18	19 346.25	3 094 288.63			
L19	19 734.52	3 094 579.66		R19	19 483.94	3 094 137.82			
L20	19 775.61	3 094 579.94		R20	19 579.93	3 093 971.52			
L21	19 790.19	3 094 580.80		R21	19 681.89	3 093 682.98			
L22	19 831.32	3 094 583.21		R22	19 879.69	3 092 808.56			
L23	19 832.32	3 094 566.17		R23	19 910.62	3 092 811.68			
L24	19 832.72	3 094 559.29		R24	19 897.60	3 092 798.94			
L25	19 802.31	3 094 556.02		R25	19 900.03	3 092 793.58			
L26	19 792.13	3 094 548.90		R26	19 918.24	3 092 753.41			
L27	19 773.46	3 094 535.82		R27	19 954.95	3 092 758.69			
L28	19 775.82	3 094 400.84		R28	20 002.45	3 092 741.43			
L29	19 717.78	3 094 123.18		R29	20 033.19	3 092 697.07			
L30	19 691.38	3 093 956.91		R30	20 086.33	3 092 632.68			
L31	19 751.48	3 093 676.67		R31	20 140.20	3 092 574.49			
L32	19 875.71	3 093 119.90		R32	20 504.58	3 092 181.27			
L33	19 899.92	3 093 043.11		R33	20 558.38	3 092 118.16			
L34	19 924.80	3 092 976.51		R34	20 606.68	3 092 052.50			
L35	19 965.09	3 092 897.77		R35	20 635.19	3 092 009.72			
L36	19 998.24	3 092 867.90		R36	20 676.07	3 091 938.93			
L37	20 020.65	3 092 863.99		R37	20 712.71	3 091 866.94			
L38	20 035.55	3 092 873.36		R38	20 827.25	3 091 600.39			
L39	20 050.22	3 092 876.34		R39	20 842.21	3 091 540.25			
L40	20 074.65	3 092 834.10		R40	20 835.60	3 091 530.31			
L41	20 038.00	3 092 797.82		R41	20 786.58	3 091 520.75			
L42	20 038.95	3 092 796.33		R42	20 789.18	3 091 480.63			
L43	20 043.48	3 092 773.66		R43	20 819.19	3 091 480.40			
L44	20 086.55	3 092 714.51		R44	20 847.85	3 091 465.98			
L45	20 135.25	3 092 657.79		R45	20 885.39	3 091 429.45			
L46	20 550.42	3 092 206.18		R46	20 923.98	3 091 339.00			
L47	20 601.08	3 092 147.10		R47	20 957.67	3 091 248.03			
L48	20 648.55	3 092 084.80		R48	20 972.32	3 091 151.05			
L49	20 691.10	3 092 019.96		R49	20 973.56	3 091 053.26			
L50	20 729.92	3 091 951.34		R50	20 959.63	3 090 973.36			
L51	20 764.08	3 091 879.21		R51	20 959.33	3 090 972.40			
					Vel	8	Van	9	P1233/23
					Sheet		of		

PADRESERWE KOÖRDINATE / ROAD RESERVE CO-ORDINATES									
LINKERKANT/LEFT HAND SIDE					REGTERKANT/RIGHT HAND SIDE				
	Y	X	WG 27°		Y	X			
L52	20 885.57	3 091 589.12		R52	20 928.45	3 090 873.30			
L53	20 898.09	3 091 567.21		R53	20 883.04	3 090 727.53			
L54	20 962.08	3 091 523.70		R54	20 874.52	3 090 706.01			
L55	21 013.44	3 091 517.57		R55	20 814.06	3 090 572.23			
L56	21 065.40	3 091 520.98		R56	20 788.08	3 090 516.23			
L57	21 091.11	3 091 513.35		R57	20 657.54	3 090 221.56			
L58	21 163.62	3 091 481.26		R58	20 608.37	3 090 091.84			
L59	21 188.18	3 091 478.87		R59	20 575.85	3 089 993.04			
L60	21 210.09	3 091 489.78		R60	20 511.65	3 089 764.19			
L61	21 253.23	3 091 476.37		R61	20 380.64	3 089 293.71			
L62	21 287.57	3 091 465.70		R62	20 335.38	3 089 263.92			
L63	21 017.47	3 090 867.59		R63	20 301.65	3 089 267.82			
L64	20 848.11	3 090 491.94		R64	20 290.83	3 089 202.30			
L65	20 765.07	3 090 308.12		R65	20 307.51	3 089 198.58			
L66	20 717.84	3 090 197.06		R66	20 343.66	3 089 154.09			
L67	20 676.24	3 090 085.97		R67	20 284.62	3 088 939.53			
L68	20 638.00	3 089 973.70		R68	20 259.22	3 088 844.92			
L69	20 602.19	3 089 851.03		R69	20 241.27	3 088 778.05			
L70	20 441.75	3 089 264.98		R70	20 238.48	3 088 765.32			
L71	20 453.01	3 089 242.28		R71	20 235.38	3 088 751.17			
L72	20 465.94	3 089 240.07		R72	20 153.01	3 088 452.80			
L73	20 454.22	3 089 179.20		R73	20 143.67	3 088 419.49			
L74	20 419.47	3 089 183.17		R74	20 082.17	3 088 200.25			
L75	20 346.93	3 088 916.30		R75	20 056.30	3 088 104.64			
L76	20 355.48	3 088 912.74		R76	19 983.30	3 087 834.87			
L77	20 329.02	3 088 792.32		R77	19 974.27	3 087 788.02			
L78	20 328.71	3 088 790.72		R78	19 960.39	3 087 715.98			
L79	20 307.72	3 088 683.49		R79	19 945.35	3 087 598.11			
L80	20 307.62	3 088 682.98		R80	19 945.09	3 087 596.06			
L81	20 285.84	3 088 693.55		R81	19 936.08	3 087 474.44			
L82	20 252.26	3 088 582.51		R82	19 872.93	3 085 803.77			
L83	20 181.38	3 088 384.04		R83	19 848.70	3 085 162.59			
L84	20 127.52	3 088 233.32		R84	19 848.68	3 085 162.12			
L85	20 087.78	3 088 081.52		R85	19 832.67	3 084 737.14			
L86	20 087.52	3 088 080.59		R86	19 825.32	3 084 677.21			
L87	20 018.64	3 087 827.01		R87	19 813.97	3 084 393.74			
L88	20 007.05	3 087 767.18		R88	19 813.94	3 084 393.51			
L89	19 980.87	3 087 592.92		R89	19 801.31	3 084 280.24			
L90	19 972.29	3 087 476.85		R90	19 781.95	3 084 183.39			
L91	19 969.62	3 087 403.94		R91	19 754.78	3 084 088.32			
L92	19 964.16	3 087 254.81							
L93	19 962.70	3 087 214.84							
L94	19 956.55	3 087 046.88							
L95	19 955.11	3 087 008.71							
L96	19 868.37	3 084 711.75							
L97	19 862.53	3 084 475.75							
L98	19 866.10	3 084 349.13							
L99	19 865.40	3 084 299.14							
L100	19 860.60	3 084 251.20							
L101	19 846.47	3 084 152.86							
L102	19 846.38	3 084 125.55							
					LINKERKANT/LEFT HAND SIDE				

Printed by and obtainable from the Government Printer, Bosman Street, Private Bag X85, Pretoria, 0001
Contact Centre Tel: 012-748 6200. eMail: info.egazette@gpw.gov.za
Publications: Tel: (012) 748 6053, 748 6061, 748 6065