



# Government Gazette Staatskoerant

REPUBLIC OF SOUTH AFRICA  
REPUBLIEK VAN SUID AFRIKA

Vol. 702

11

December  
Desember 2023

No. 49843



N.B. The Government Printing Works will not be held responsible for the quality of "Hard Copies" or "Electronic Files" submitted for publication purposes

ISSN 1682-5845



9 771682 584003

**AIDS HELPLINE: 0800-0123-22 Prevention is the cure**

**IMPORTANT NOTICE:**

**THE GOVERNMENT PRINTING WORKS WILL NOT BE HELD RESPONSIBLE FOR ANY ERRORS THAT MIGHT OCCUR DUE TO THE SUBMISSION OF INCOMPLETE / INCORRECT / ILLEGIBLE COPY.**

**No FUTURE QUERIES WILL BE HANDLED IN CONNECTION WITH THE ABOVE.**

**Contents**

<i>No.</i>	<i>Gazette</i>		<i>Page</i>
	<i>No.</i>		<i>No.</i>

**GOVERNMENT NOTICES • GOEWERMENTSKENNISGEWINGS****Transport, Department of/ Vervoer, Departement van**

4174	South African National Roads Agency Limited and the National Roads Act (7/1998): Declaration Amendment of National Road N12 Section 15.....	49843	3
4174	Suid-Afrikaanse Nasionale Padagentskap Beperk en Nasionale Paaie Wet (7/1998): Verklaring Wysiging van Nasionale Pad N12 Seksie 15 .....	49843	4

---

**GOVERNMENT NOTICES • GOEWERMENTSKENNISGEWINGS**

---

**DEPARTMENT OF TRANSPORT**

NO. 4174

11 December 2023

**THE SOUTH AFRICAN NATIONAL ROADS  
AGENCY SOC LIMITED**Registration No: 1998/009584/30

---

**DECLARATION AMENDMENT OF NATIONAL ROAD N12 SECTION 15**

By virtue of Section 40 (1)(b) of The South African National Roads Agency Limited and National Roads Act, 1998 (Act No. 7 of 1998), I hereby amend Declaration No. 758 of 2007 by substituting it in its entirety with the accompanying sheets 1 to 17 of Plan No. P1207/20.

**(National Road N12 Section 15: Wolmaransstad to Klerksdorp)**



---

**MINISTER OF TRANSPORT**

DEPARTEMENT VAN VERVOER

NO. 4174

11 Desember 2023

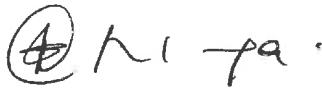
**DIE SUID-AFRIKAANSE NASIONALE  
PADAGENTSKAP MSB BEPERK**

Registrasie No: 1998/009584/30

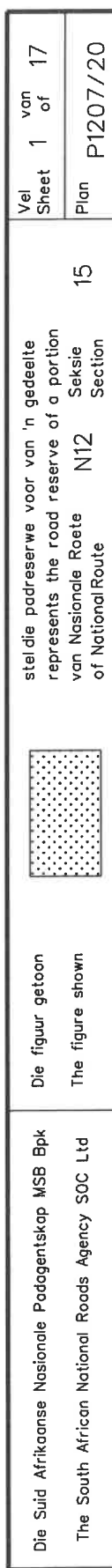
**VERKLARING WYSIGING VAN NASIONALE PAD N12 SEKSIE 15**

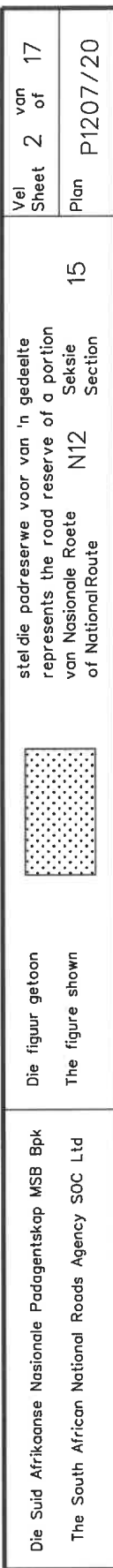
Kragtens Artikel 40(1)(b) van die Wet op die Suid-Afrikaanse Nasionale Padagentskap Beperk en op Nasionale Paaie, 1998 (Wet No. 7 van 1998), wysig ek hiermee Verklaring No. 758 van 2007 deur dit in sy geheel te vervang met bygaande velle 1 tot 17 van Plan No. P1207/20.

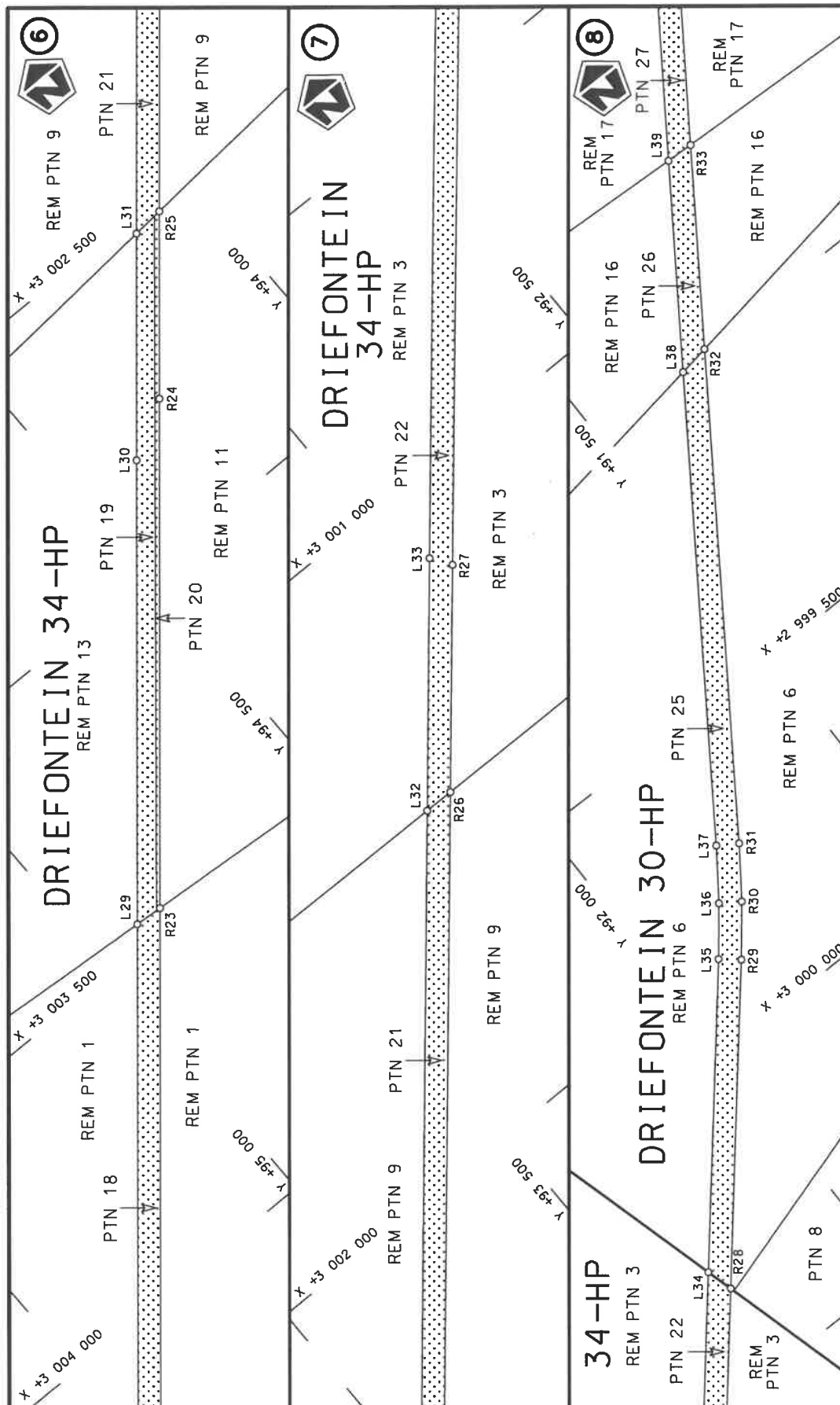
**(Nasionale Pad N12 Seksie 15: Wolmaransstad to Klerksdorp)**



**MINISTER VAN VERVOER**







steeldie padreserwe voor van 'n gedeelte  
represents the road reserve of a portion  
van Nasionale Roete N12  
of National Route



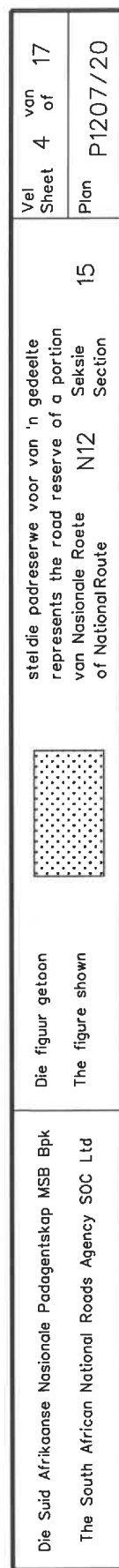
Die figuur getoon  
The figure shown

Die Suid Afrikaanse Nasionale Padagentskap MSB Bpk  
The South African National Roads Agency SOC Ltd

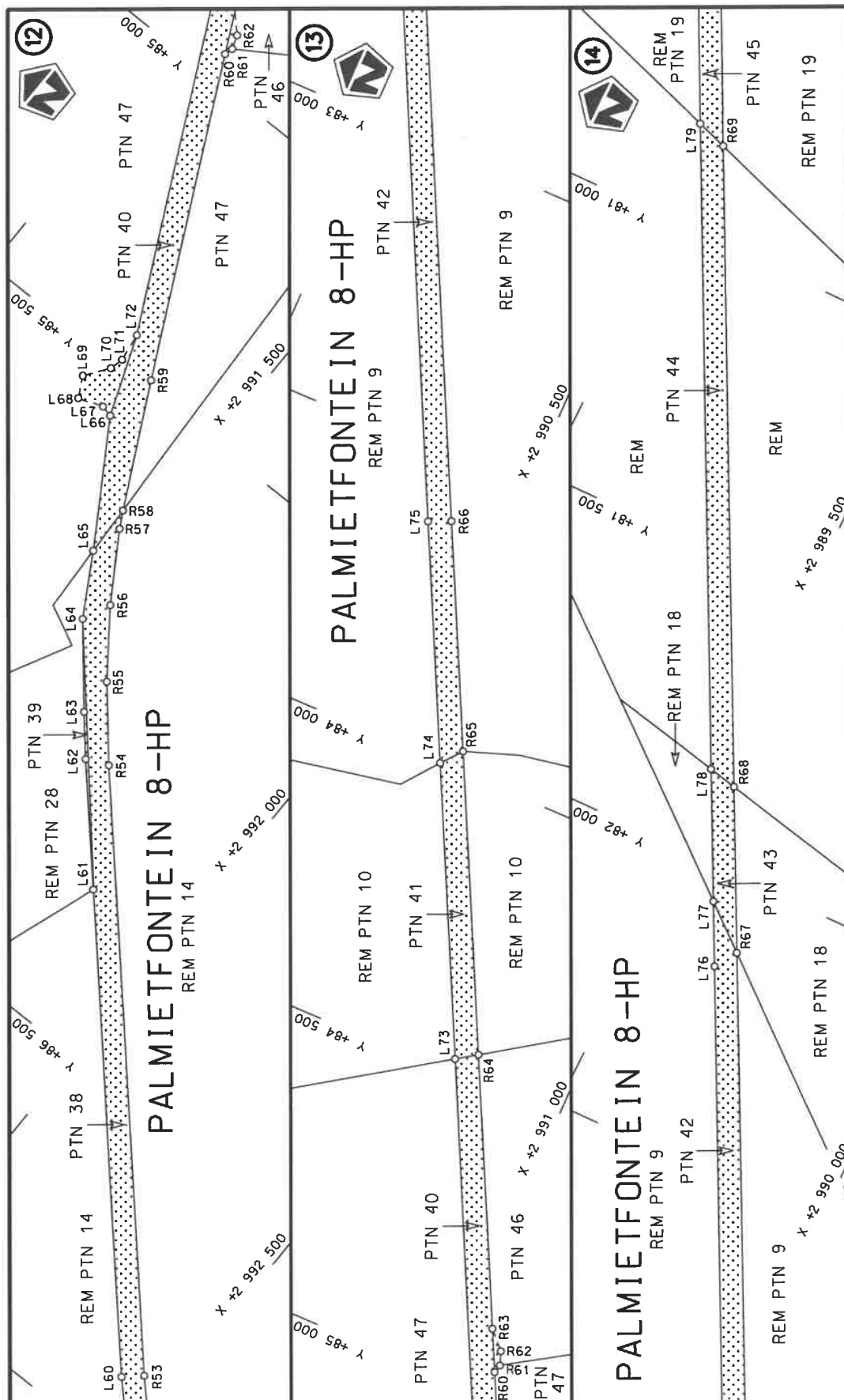
Vel  
Sheet 3 of 17

Plan  
P1207/20

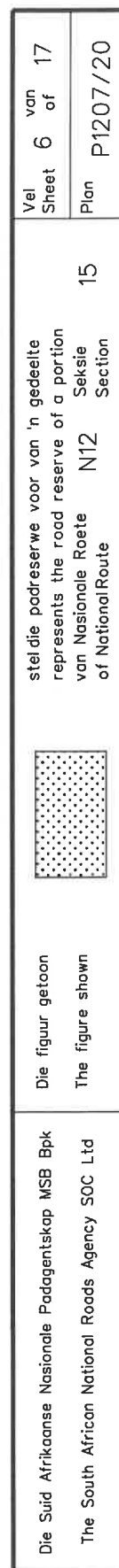


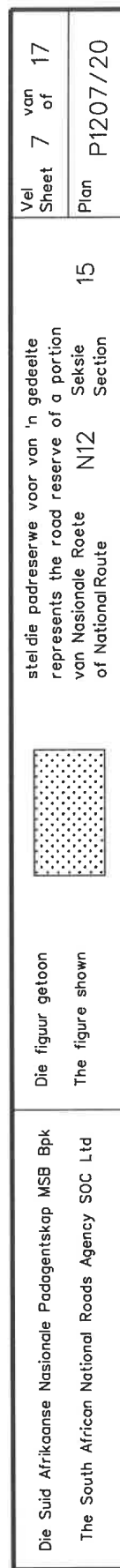


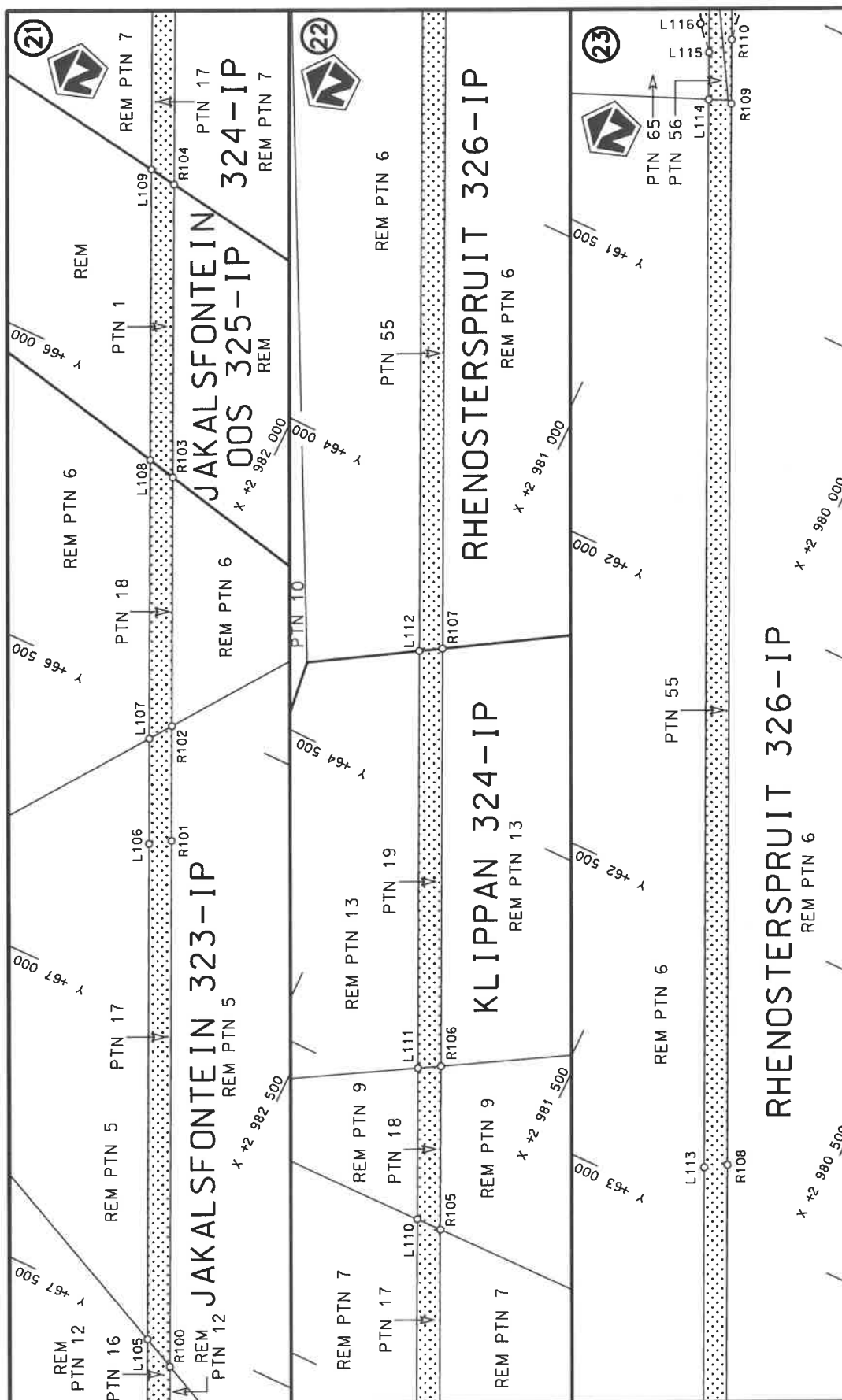





Die Suid Afrikaanse Nasionale Padagentskap MSB Bpk The South African National Roads Agency SOC Ltd	Die figuur getoon The figure shown	stel die padreserwe voor van 'n gedeelte represents the road reserve of a portion van Nasionale Roete N12 of National Route	Vel Sheet 5 of 17	15 Sektie Section	Plan P1207/20
---	---------------------------------------	--	----------------------	-------------------------	---------------

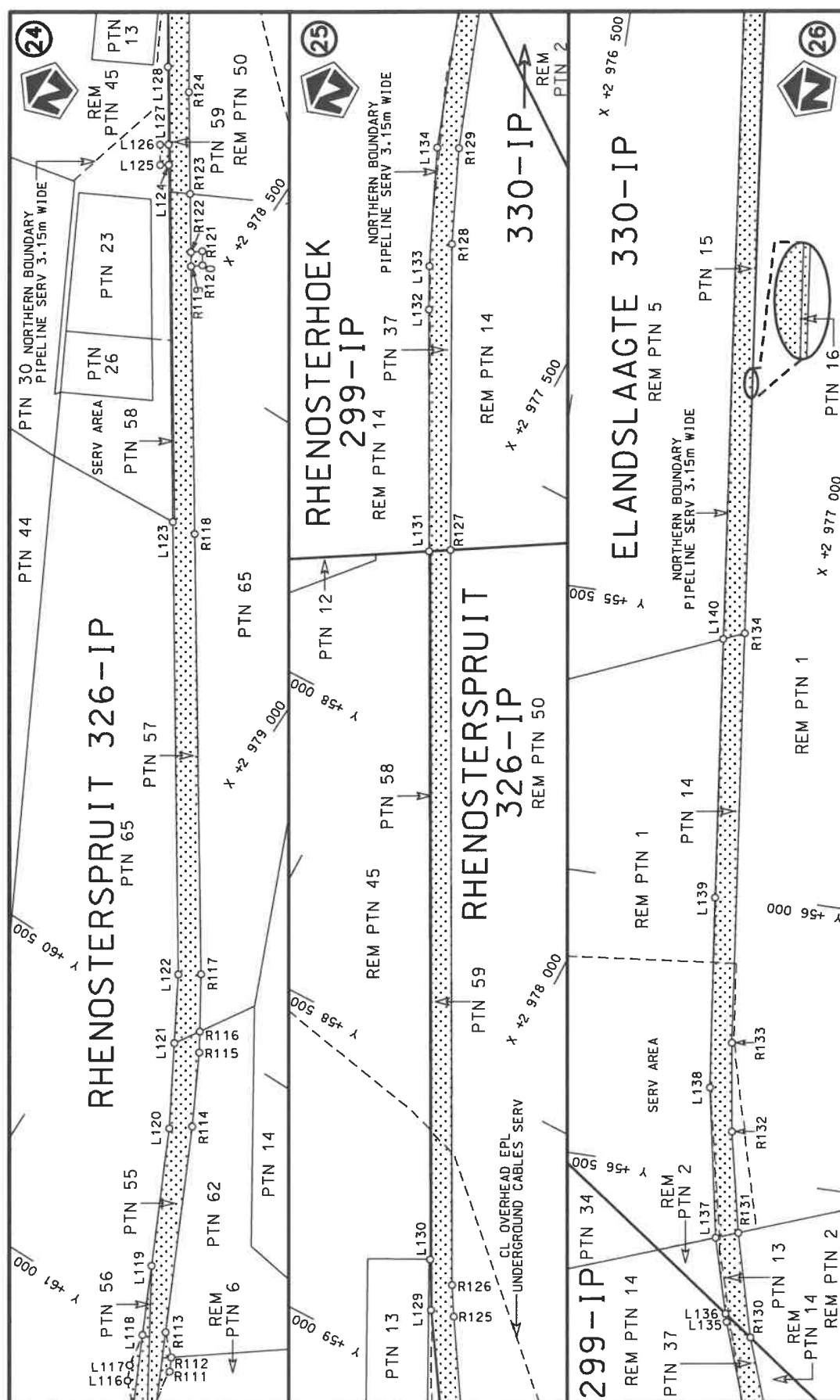





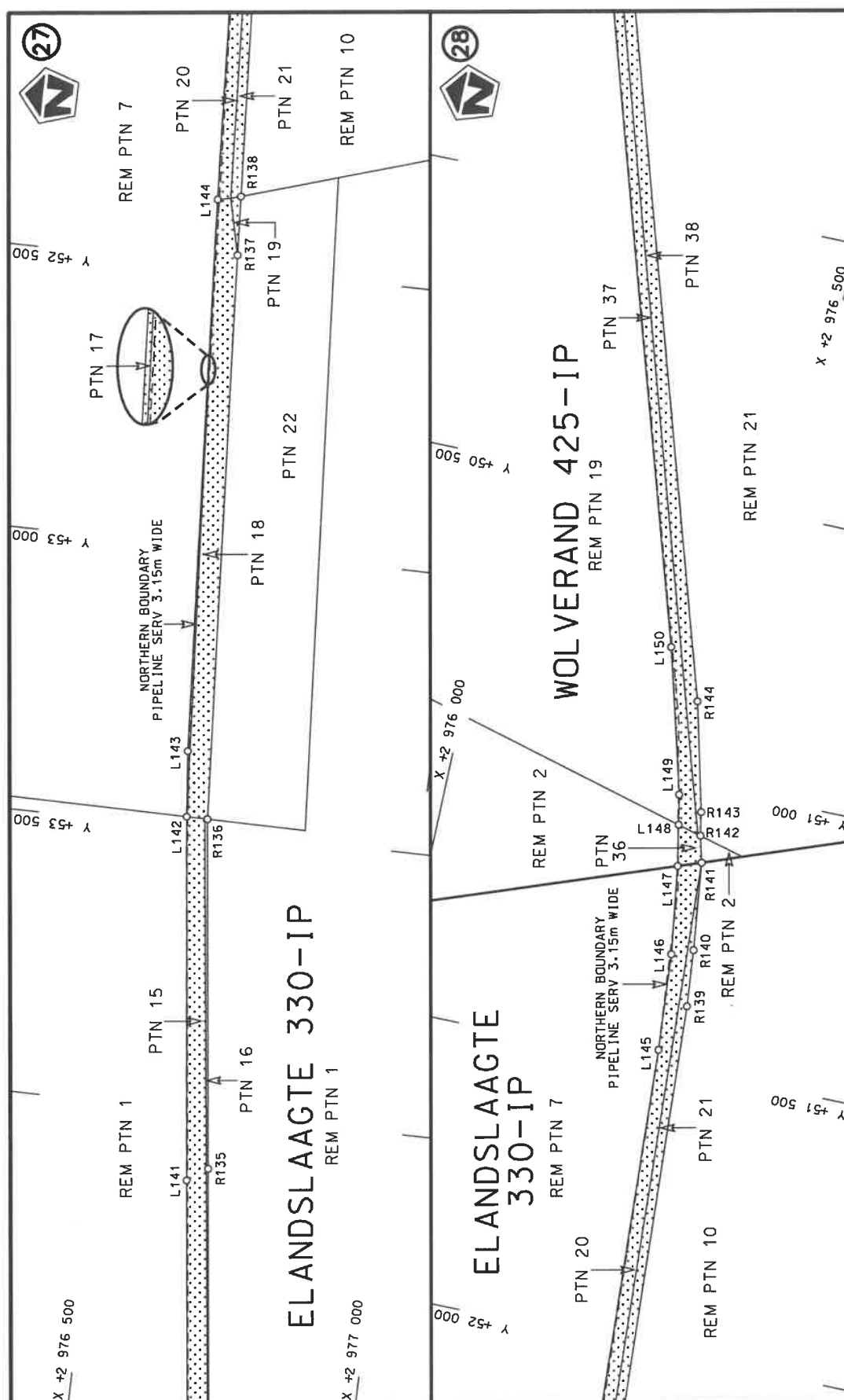



Die Suid Afrikaanse Nasionale Podagogsenskap MSB Bpk The South African National Roads Agency SOC Ltd	Die figuur getoon The figure shown		steldie padreserwe voor van 'n gedeelte represents the road reserve of a portion van Nasionale Roete N12 of National Route	Vel Sheet 8 of 17
			Seksie Section 15	Plan P1207/20

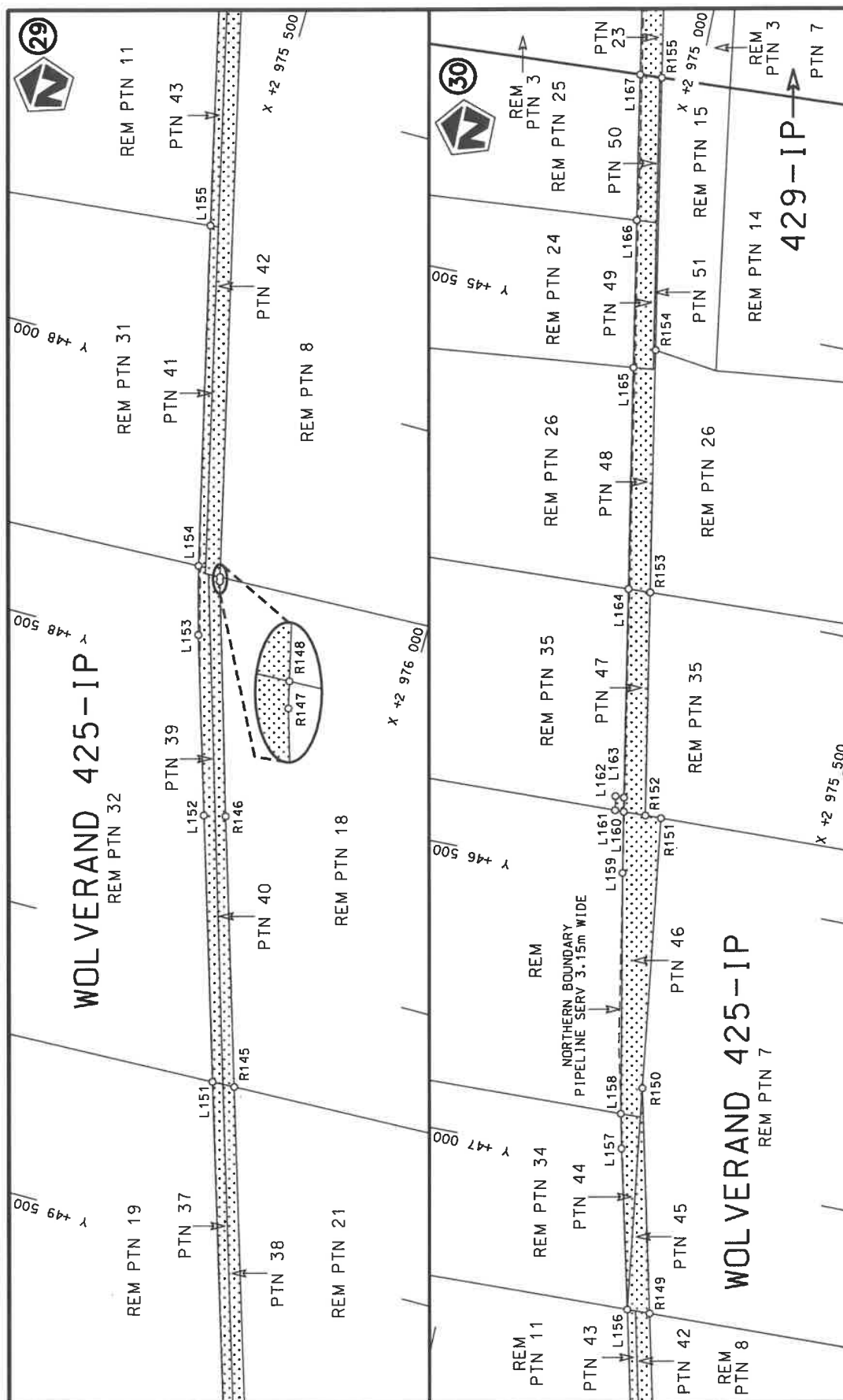





Die Suid Afrikaanse Nasionale Padagentskap MSB Bpk	Die figuur getoon		stel die padreserwe voor van 'n gedeelte represents the road reserve of a portion	Vel Sheet	9 of	17
The South African National Roads Agency SOC Ltd	The figure shown		van Nasionale Roete N12 of National Route	15	Plan	P1207/20

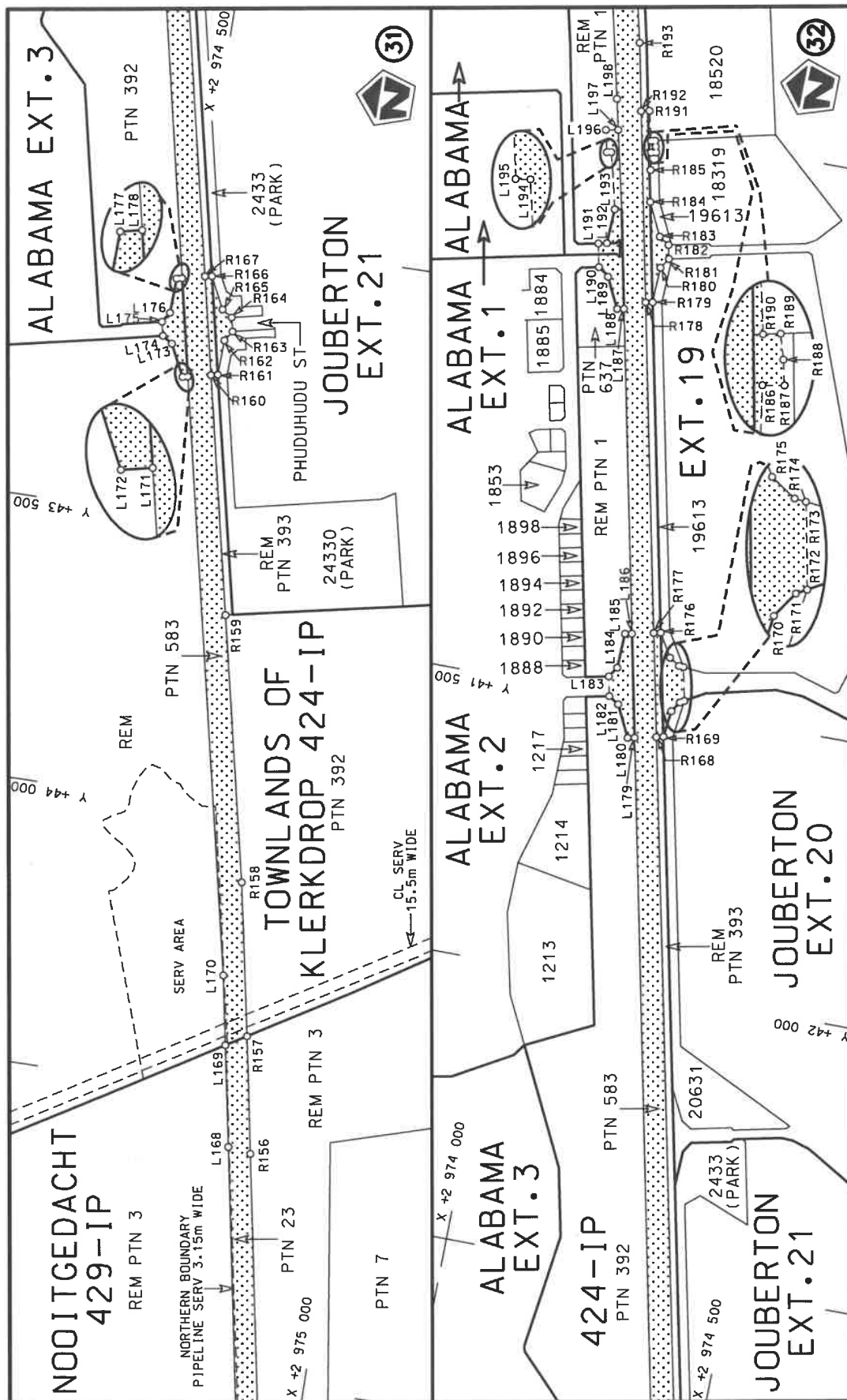


Die Suid Afrikaanse Nasionale Padagentskap MSB Bpk  The South African National Roads Agency SOC Ltd	Die figuur getoon  The figure shown		stel die padreserwe voor van 'n gedeelte represents the road reserve of a portion van Nasionale Roete N12 of National Route	15	Vel Sheet 10 of 17
				Plan	P1207/20



Die Suid Afrikaanse Nasionale Padagentskap MSB Bpk	Die figuur getoon		steldie padreserwe voor van 'n gedeelte represents the road reserve of a portion van Nasionale Roete N12 of National Route	Vel Sheet	11 of	17
The South African National Roads Agency SOC Ltd	The figure shown			15	Plan	P1207/20





Die Suid Afrikaanse Nasionale Padagentskap MSB Bpk The South African National Roads Agency SOC Ltd	Die figuur getoon The figure shown	steldie padreserwe voor van 'n gedeelte represents the road reserve of a portion van Nasionale Roete of National Route	15 N12 Seksie Section	12 van Sheet of	17 Plan P1207/20
---	---------------------------------------	---	--------------------------------	--------------------------	------------------------



PADRESERWE KOÖRDINATE / ROAD RESERVE CO-ORDINATES									
LINKERKANT/LEFT HAND SIDE					REGTERKANT/RIGHT HAND SIDE				
	Y		X	WG 27°		Y		X	
L1	100 378.88	3	009 999.18		R1	100 366.82	3	010 037.52	
L2	100 315.89	3	009 983.40		R2	100 311.93	3	010 023.76	
L3	100 225.73	3	009 948.51		R3	100 134.64	3	009 974.98	
L4	100 126.03	3	009 908.22		R4	100 037.66	3	009 923.10	
L5	100 127.33	3	009 918.28		R5	99 958.55	3	009 878.86	
L6	100 074.51	3	009 895.77		R6	99 863.70	3	009 818.41	
L7	99 979.34	3	009 844.76		R7	99 775.15	3	009 747.51	
L8	99 910.16	3	009 800.27		R8	99 694.83	3	009 670.36	
L9	99 814.39	3	009 726.53		R9	99 676.06	3	009 649.12	
L10	99 802.80	3	009 717.60		R10	99 621.14	3	009 586.93	
L11	99 723.66	3	009 642.69		R11	99 554.52	3	009 496.91	
L12	99 651.62	3	009 561.34		R12	99 347.07	3	009 188.52	
L13	99 587.66	3	009 474.64		R13	99 067.46	3	008 772.85	
L14	99 393.14	3	009 185.53		R14	98 173.58	3	007 444.01	
L15	98 649.70	3	008 080.49		R15	98 113.92	3	007 360.15	
L16	98 566.98	3	007 957.53		R16	98 049.80	3	007 279.31	
L17	98 187.61	3	007 393.65		R17	97 131.02	3	006 180.45	
L18	98 145.77	3	007 336.09		R18	96 874.52	3	005 873.68	
L19	98 080.37	3	007 253.56		R19	96 618.14	3	005 566.98	
L20	97 186.58	3	006 184.60		R20	96 367.96	3	005 267.71	
L21	96 917.16	3	005 862.37		R21	96 111.46	3	004 960.87	
L22	96 657.42	3	005 551.61		R22	95 486.74	3	004 213.56	
L23	96 382.21	3	005 222.34		R23	94 863.68	3	003 468.24	
L24	96 164.98	3	004 962.44		R24	94 286.22	3	002 777.46	
L25	95 573.63	3	004 254.94		R25	94 073.95	3	002 523.61	
L26	95 555.27	3	004 210.22		R26	93 191.02	3	001 467.71	
L27	95 539.27	3	004 190.34		R27	92 933.50	3	001 159.74	
L28	95 499.37	3	004 166.09		R28	92 247.21	3	000 339.18	
L29	94 912.74	3	003 464.62		R29	91 873.85	2	999 892.77	
L30	94 386.39	3	002 835.24		R30	91 809.74	2	999 812.08	
L31	94 129.51	3	002 527.89		R31	91 749.88	2	999 728.25	
L32	93 243.18	3	001 467.40		R32	91 259.43	2	999 002.60	
L33	92 957.05	3	001 125.06		R33	91 057.14	2	998 703.31	
L34	92 260.21	3	000 292.18		R34	90 599.00	2	998 025.46	
L35	91 904.50	2	999 867.04		R35	90 563.57	2	997 998.61	
L36	91 843.23	2	999 789.74		R36	90 548.81	2	997 977.24	
L37	91 783.81	2	999 706.49		R37	90 534.09	2	997 929.42	
L38	91 314.06	2	999 011.52		R38	90 086.44	2	997 267.10	
L39	91 104.47	2	998 701.45		R39	89 720.66	2	996 725.91	
L40	90 603.66	2	997 960.52		R40	89 233.91	2	996 006.72	
L41	90 475.85	2	997 771.43		R41	89 090.22	2	995 794.40	
L42	90 458.93	2	997 715.79		R42	88 859.62	2	995 453.69	
L43	90 441.06	2	997 693.04		R43	88 529.96	2	994 964.31	
L44	90 404.53	2	997 665.91		R44	88 419.63	2	994 794.76	
L45	90 099.83	2	997 215.12		R45	88 264.05	2	994 547.00	
L46	89 781.99	2	996 744.91		R46	87 647.48	2	993 565.06	
L47	89 747.68	2	996 694.14		R47	87 429.47	2	993 217.85	
L48	89 253.74	2	995 963.20		R48	87 206.07	2	992 861.92	
L49	89 152.41	2	995 813.26		R49	87 130.84	2	992 750.68	
L50	88 849.04	2	995 364.32		R50	87 102.65	2	992 714.55	
L51	88 565.35	2	994 944.51		R51	87 048.25	2	992 644.82	
					<div> <div>Vel Sheet</div> <div>14</div> <div>Van of</div> <div>17</div> <div>P1207/20</div> </div>				

PADRESERVE KOÖRDINATE / ROAD RESERVE CO-ORDINATES									
LINKERKANT/LEFT HAND SIDE					REGTERKANT/RIGHT HAND SIDE				
	Y		X	WG 27 <sup>o</sup>		Y		X	
L52	88 454.42	2	994 775.03		R52	86 958.62	2	992 544.76	
L53	88 294.53	2	994 520.38		R53	86 862.48	2	992 450.95	
L54	87 691.42	2	993 559.82		R54	86 059.75	2	991 719.45	
L55	87 455.04	2	993 183.35		R55	85 946.82	2	991 622.98	
L56	87 240.11	2	992 840.91		R56	85 837.48	2	991 542.15	
L57	87 150.58	2	992 703.99		R57	85 722.28	2	991 469.05	
L58	87 078.62	2	992 618.69		R58	85 693.35	2	991 453.25	
L59	86 987.32	2	992 516.99		R59	85 483.11	2	991 345.98	
L60	86 889.31	2	992 421.40		R60	84 953.44	2	991 080.63	
L61	86 248.11	2	991 837.20		R61	84 938.67	2	991 084.49	
L62	86 076.51	2	991 680.85		R62	84 914.79	2	991 075.78	
L63	86 013.11	2	991 625.85		R63	84 884.29	2	991 045.99	
L64	85 886.83	2	991 519.95		R64	84 448.52	2	990 827.68	
L65	85 781.17	2	991 457.93		R65	83 966.15	2	990 586.03	
L66	85 576.57	2	991 329.92		R66	83 600.38	2	990 402.79	
L67	85 572.18	2	991 310.02		R67	82 123.83	2	989 663.66	
L68	85 585.88	2	991 267.41		R68	81 860.09	2	989 531.81	
L69	85 549.98	2	991 248.56		R69	80 843.28	2	989 023.48	
L70	85 508.72	2	991 278.35		R70	80 404.43	2	988 804.08	
L71	85 485.09	2	991 283.77		R71	79 602.17	2	988 402.65	
L72	85 436.67	2	991 276.15		R72	79 426.97	2	988 314.99	
L73	84 471.67	2	990 793.34		R73	79 246.77	2	988 224.82	
L74	84 000.89	2	990 557.81		R74	79 060.11	2	988 131.42	
L75	83 617.06	2	990 365.77		R75	78 789.24	2	987 995.88	
L76	82 162.29	2	989 638.44		R76	78 148.75	2	987 675.40	
L77	82 059.06	2	989 586.83		R77	77 726.97	2	987 464.63	
L78	81 848.93	2	989 481.77		R78	76 742.30	2	986 972.57	
L79	80 824.86	2	988 969.74		R79	76 449.61	2	986 826.17	
L80	80 422.82	2	988 768.73		R80	75 481.54	2	986 341.95	
L81	79 591.48	2	988 352.92		R81	75 379.73	2	986 291.02	
L82	79 421.72	2	988 268.02		R82	75 179.62	2	986 190.89	
L83	79 247.37	2	988 180.81		R83	73 694.54	2	985 447.80	
L84	79 068.41	2	988 091.31		R84	73 337.87	2	985 276.23	
L85	78 802.30	2	987 958.21		R85	72 850.02	2	985 045.04	
L86	78 160.44	2	987 637.18		R86	72 570.61	2	984 912.62	
L87	77 708.15	2	987 411.04		R87	72 525.45	2	984 908.54	
L88	76 409.54	2	986 761.30		R88	72 502.00	2	984 897.25	
L89	75 452.28	2	986 282.62		R89	72 477.31	2	984 868.41	
L90	75 397.30	2	986 255.13		R90	71 750.87	2	984 524.14	
L91	75 204.45	2	986 158.69		R91	71 444.94	2	984 379.13	
L92	73 711.53	2	985 412.10		R92	70 760.50	2	984 054.68	
L93	73 570.48	2	985 342.95		R93	70 699.48	2	984 042.14	
L94	73 144.45	2	985 140.91		R94	70 656.15	2	984 021.60	
L95	71 793.15	2	984 500.07		R95	70 660.00	2	984 007.04	
L96	71 448.93	2	984 336.90		R96	70 262.67	2	983 818.69	
L97	70 772.77	2	984 016.37		R97	69 497.25	2	983 455.92	
L98	70 769.48	2	984 000.29		R98	69 291.72	2	983 358.51	
L99	70 740.65	2	983 984.14		R99	68 546.27	2	983 005.20	
L100	70 712.84	2	983 987.96		R100	67 556.18	2	982 535.67	
L101	70 282.00	2	983 783.73		R101	66 710.01	2	982 134.39	
L102	69 493.19	2	983 410.01		R102	66 525.66	2	982 046.99	
					<div> <div>Vel</div> <div>Sheet</div> <div>15</div> <div>Van</div> <div>of</div> <div>17</div> <div>P1207/20</div> </div>				



PADRESERWE KOÖRDINATE / ROAD RESERVE CO-ORDINATES					
LINKERKANT/LEFT HAND SIDE			REGTERKANT/RIGHT HAND SIDE		
	Y	X	WG 27 <sup>a</sup>	Y	X
L103	69 309.92	2 983 323.19		R103	66 125.73 2 981 857.38
L104	68 552.07	2 982 964.14		R104	65 655.44 2 981 634.41
L105	67 529.46	2 982 479.18		R105	65 190.44 2 981 413.95
L106	66 732.03	2 982 101.01		R106	64 927.56 2 981 289.31
L107	66 562.87	2 982 020.79		R107	64 255.64 2 980 970.92
L108	66 114.99	2 981 808.42		R108	62 900.86 2 980 328.95
L109	65 648.23	2 981 587.09		R109	61 195.33 2 979 519.46
L110	65 190.81	2 981 370.19		R110	61 092.15 2 979 470.54
L111	64 947.70	2 981 254.91		R111	61 037.18 2 979 461.86
L112	64 276.61	2 980 936.66		R112	61 014.29 2 979 450.57
L113	62 922.33	2 980 294.41		R113	60 981.79 2 979 418.22
L114	61 205.40	2 979 480.35		R114	60 647.44 2 979 259.69
L115	61 129.69	2 979 444.50		R115	60 529.45 2 979 198.86
L116	61 089.84	2 979 409.44		R116	60 497.48 2 979 179.43
L117	61 064.45	2 979 397.65		R117	60 409.98 2 979 126.25
L118	61 007.52	2 979 386.64		R118	59 754.83 2 978 694.37
L119	60 895.29	2 979 333.49		R119	59 356.80 2 978 431.99
L120	60 671.76	2 979 227.63		R120	59 347.61 2 978 443.89
L121	60 538.95	2 979 152.99		R121	59 326.58 2 978 430.03
L122	60 431.97	2 979 092.86		R122	59 335.69 2 978 418.07
L123	59 757.33	2 978 650.25		R123	59 249.12 2 978 361.00
L124	59 225.81	2 978 301.52		R124	59 097.93 2 978 261.34
L125	59 234.03	2 978 288.97		R125	58 880.34 2 978 122.67
L126	59 203.78	2 978 269.12		R126	58 832.01 2 978 093.65
L127	59 195.56	2 978 281.67		R127	57 676.25 2 977 475.58
L128	59 079.90	2 978 205.79		R128	57 194.30 2 977 221.40
L129	58 888.89	2 978 082.18		R129	57 037.87 2 977 152.07
L130	58 809.83	2 978 038.42		R130	56 780.10 2 977 059.08
L131	57 695.70	2 977 443.58		R131	56 598.54 2 977 010.33
L132	57 315.95	2 977 240.83		R132	56 421.46 2 976 972.62
L133	57 247.34	2 977 205.21		R133	56 264.62 2 976 949.39
L134	57 054.75	2 977 117.76		R134	55 539.21 2 976 864.54
L135	56 758.61	2 977 013.20		R135	54 098.45 2 976 695.81
L136	56 744.39	2 977 009.17		R136	53 479.59 2 976 623.64
L137	56 612.81	2 976 972.09		R137	52 476.82 2 976 560.66
L138	56 349.11	2 976 922.59		R138	52 372.27 2 976 554.47
L139	56 012.95	2 976 881.65		R139	51 388.50 2 976 495.95
L140	55 554.76	2 976 828.06		R140	51 288.25 2 976 486.19
L141	54 123.23	2 976 660.64		R141	51 132.97 2 976 467.06
L142	53 479.37	2 976 587.03		R142	51 086.58 2 976 454.90
L143	53 363.19	2 976 575.70		R143	51 045.13 2 976 447.32
L144	52 382.33	2 976 515.08		R144	50 853.72 2 976 399.60
L145	51 474.76	2 976 463.65		R145	49 214.41 2 975 890.08
L146	51 303.36	2 976 449.67		R146	48 754.28 2 975 747.07
L147	51 147.51	2 976 427.37		R147	48 354.64 2 975 626.24
L148	51 075.31	2 976 413.52		R148	48 346.81 2 975 624.36
L149	51 022.66	2 976 403.39		R149	47 247.88 2 975 361.07
L150	50 768.71	2 976 334.34		R150	46 857.80 2 975 267.61
L151	49 215.72	2 975 851.21		R151	46 380.76 2 975 201.98
L152	48 762.73	2 975 710.28		R152	46 381.54 2 975 174.15
L153	48 456.05	2 975 615.39		R153	45 991.49 2 975 101.97
			Vel Sheet	16 Van of 17	P1207/20

PADRESERWE KOÖRDINATE / ROAD RESERVE CO-ORDINATES														
LINKERKANT/LEFT HAND SIDE					REGTERKANT/RIGHT HAND SIDE									
	Y		X	WG 27°		Y		X						
L154	48 337.54	2	975 582.96		R154	45 567.89	2	975 023.58						
L155	47 749.44	2	975 441.16		R155	45 091.94	2	974 935.50						
L156	47 248.94	2	975 321.43		R156	44 597.42	2	974 843.99						
L157	46 970.35	2	975 253.32		R157	44 391.44	2	974 805.88						
L158	46 909.90	2	975 239.61		R158	44 122.48	2	974 754.28						
L159	46 489.70	2	975 155.76		R159	43 657.29	2	974 652.73						
L160	46 382.63	2	975 135.48		R160	43 240.08	2	974 561.13						
L161	46 383.06	2	975 120.31		R161	43 237.51	2	974 573.05						
L162	46 358.29	2	975 115.73		R162	43 175.61	2	974 574.85						
L163	46 357.73	2	975 130.88		R163	43 157.75	2	974 586.28						
L164	45 993.06	2	975 063.45		R164	43 133.33	2	974 580.93						
L165	45 606.10	2	974 991.91		R165	43 121.89	2	974 563.06						
L166	45 348.61	2	974 944.30		R166	43 066.44	2	974 535.52						
L167	45 094.00	2	974 897.23		R167	43 068.40	2	974 523.45						
L168	44 591.14	2	974 804.25		R168	41 554.28	2	974 191.19						
L169	44 412.97	2	974 771.13		R169	41 551.55	2	974 203.15						
L170	44 290.75	2	974 748.42		R170	41 504.31	2	974 208.17						
L171	43 248.93	2	974 521.54		R171	41 486.45	2	974 219.60						
L172	43 250.92	2	974 512.47		R172	41 482.29	2	974 226.59						
L173	43 195.52	2	974 484.96		R173	41 423.64	2	974 213.63						
L174	43 184.09	2	974 467.09		R174	41 422.95	2	974 205.66						
L175	43 159.67	2	974 461.73		R175	41 411.51	2	974 187.80						
L176	43 141.80	2	974 473.17		R176	41 370.89	2	974 163.52						
L177	43 079.98	2	974 474.96		R177	41 373.61	2	974 151.55						
L178	43 077.93	2	974 484.32		R178	40 799.57	2	974 025.65						
L179	41 562.56	2	974 154.45		R179	40 797.27	2	974 037.63						
L180	41 565.15	2	974 142.61		R180	40 734.36	2	974 039.21						
L181	41 509.75	2	974 115.10		R181	40 716.49	2	974 050.65						
L182	41 498.32	2	974 097.24		R182	40 692.07	2	974 045.29						
L183	41 463.99	2	974 089.74		R183	40 680.64	2	974 027.43						
L184	41 446.13	2	974 101.17		R184	40 623.17	2	973 999.44						
L185	41 384.30	2	974 102.96		R185	40 567.29	2	973 989.30						
L186	41 381.86	2	974 114.79		R186	40 536.77	2	973 984.02						
L187	40 817.97	2	973 991.07		R187	40 535.07	2	973 992.67						
L188	40 820.42	2	973 979.24		R188	40 524.90	2	973 990.10						
L189	40 767.35	2	973 952.89		R189	40 514.80	2	973 986.88						
L190	40 753.59	2	973 933.87		R190	40 516.46	2	973 980.03						
L191	40 712.51	2	973 924.90		R191	40 464.54	2	973 967.13						
L192	40 709.30	2	973 939.52		R192	40 467.81	2	973 952.89						
L193	40 647.53	2	973 941.31		R193	40 349.10	2	973 926.86						
L194	40 549.04	2	973 915.99		R194	39 611.74	2	973 748.05						
L195	40 550.42	2	973 908.39		R195	39 589.19	2	973 750.67						
L196	40 512.15	2	973 899.10		R196	39 566.64	2	973 753.29						
L197	40 507.97	2	973 920.21		R197	38 916.46	2	973 595.55						
L198	40 454.31	2	973 907.33		R198	38 759.79	2	973 557.54						
L199	39 972.50	2	973 791.65		LINKERKANT/LEFT HAND SIDE									
L200	39 967.72	2	973 784.05		L205	39 636.85	2	973 702.68						
L201	39 949.44	2	973 779.61		L206	38 965.25	2	973 539.73						
L202	39 941.90	2	973 784.23		L207	38 773.85	2	973 493.42						
L203	39 657.35	2	973 715.11											
L204	39 629.15	2	973 708.23											
					<table><tr><td>Vel Sheet</td><td>17</td><td>Van of</td><td>17</td><td>P1207/20</td></tr></table>					Vel Sheet	17	Van of	17	P1207/20
Vel Sheet	17	Van of	17	P1207/20										







Printed by and obtainable from the Government Printer, Bosman Street, Private Bag X85, Pretoria, 0001  
Contact Centre Tel: 012-748 6200. eMail: [info.egazette@gpw.gov.za](mailto:info.egazette@gpw.gov.za)  
Publications: Tel: (012) 748 6053, 748 6061, 748 6065