



Government Gazette Staatskoerant

REPUBLIC OF SOUTH AFRICA
REPUBLIEK VAN SUID AFRIKA

Vol. 702

11

December
Desember 2023

No. 49844



N.B. The Government Printing Works will not be held responsible for the quality of "Hard Copies" or "Electronic Files" submitted for publication purposes

ISSN 1682-5845



9 771682 584003

AIDS HELPLINE: 0800-0123-22 Prevention is the cure

IMPORTANT NOTICE:

THE GOVERNMENT PRINTING WORKS WILL NOT BE HELD RESPONSIBLE FOR ANY ERRORS THAT MIGHT OCCUR DUE TO THE SUBMISSION OF INCOMPLETE / INCORRECT / ILLEGIBLE COPY.

No FUTURE QUERIES WILL BE HANDLED IN CONNECTION WITH THE ABOVE.

Contents

<i>No.</i>	<i>Gazette</i>		<i>Page</i>
	<i>No.</i>		<i>No.</i>

GOVERNMENT NOTICES • GOEWERMENTSKENNISGEWINGS**Transport, Department of/ Vervoer, Departement van**

4175	South African National Roads Agency Limited and the National Roads Act (7/1998): Declaration Amendment of National Road N12 Section 16: Amendment of Declaration No. 252 of 2007	49844	3
4175	Suid-Afrikaanse Nasionale Padagentskap Beperk en Nasionale Paaie Wet (7/1998): Verklaring Wysiging van Nasionale Pad N12 Seksie 16: Wysiging van Verklaring No. 252 van 2007	49844	4

GOVERNMENT NOTICES • GOEWERMENTSKENNISGEWINGS

DEPARTMENT OF TRANSPORT

NO. 4175

11 December 2023

**THE SOUTH AFRICAN NATIONAL ROADS
AGENCY SOC LIMITED**

Registration No: 1998/009584/30

DECLARATION AMENDMENT OF NATIONAL ROAD N12 SECTION 16

AMENDMENT OF DECLARATION No. 252 OF 2007.

By virtue of Section 40 (1)(b) of The South African National Roads Agency Limited and National Roads Act, 1998 (Act No. 7 of 1998), I hereby amend Declaration No. 252 of 2007 by substituting it in its entirety with the accompanying sheets 1 to 12 of Plan No. P1204/20.

(National Road N12 Section 16: Klerksdorp – Potchefstroom)


MINISTER OF TRANSPORT

DEPARTEMENT VAN VERVOER

NO. 4175

11 Desember 2023

**DIE SUID-AFRIKAANSE NASIONALE
PADAGENTSKAP MSB BEPERK**

Registrasie No: 1998/009584/30

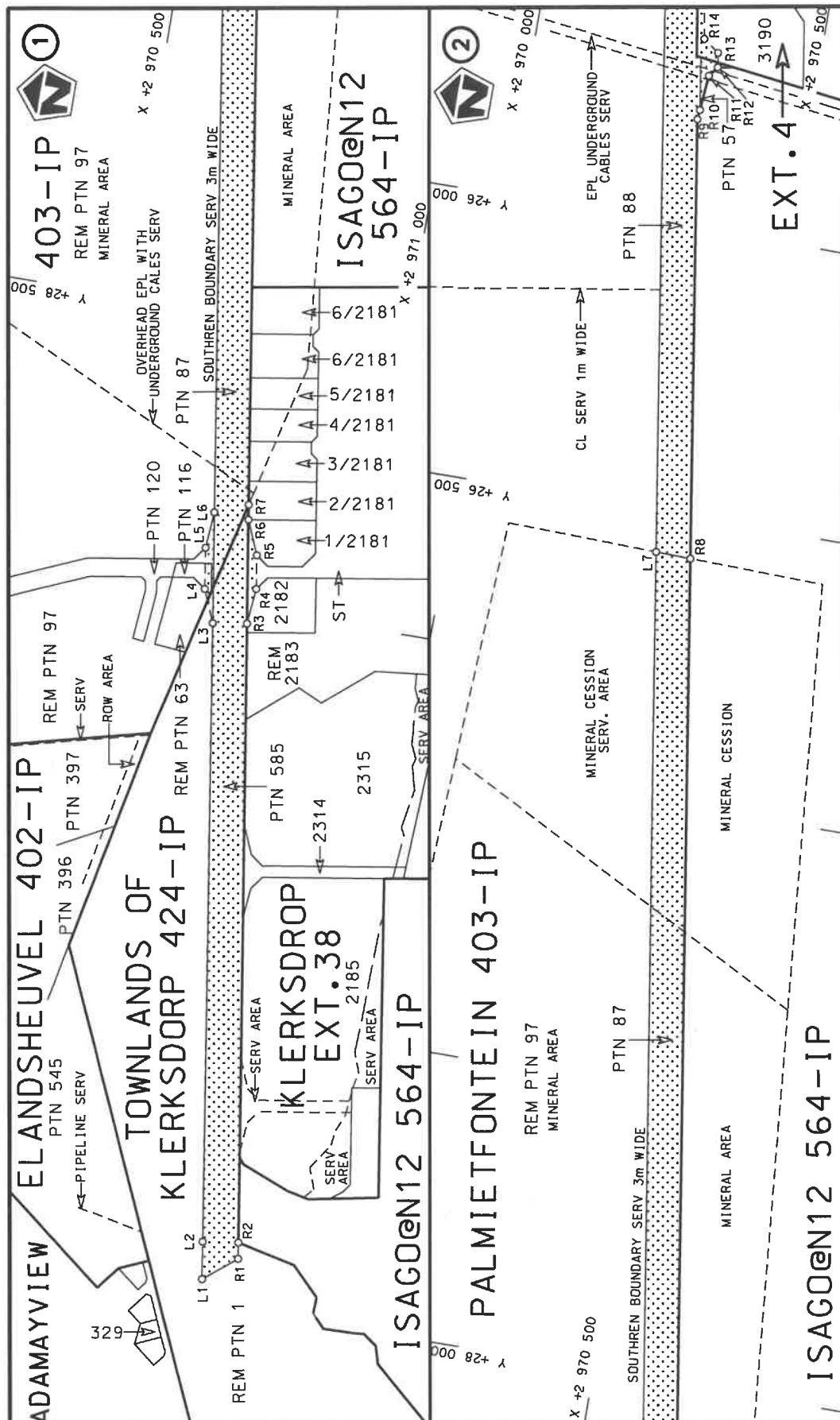
VERKLARING WYSIGING VAN NASIONALE PAD N12 SEKSIE 16

WYSIGING VAN VERKLARING No. 252 VAN 2007.

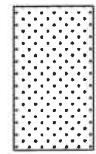
Kragtens Artikel 40(1)(b) van die Wet op die Suid-Afrikaanse Nasionale Padagentskap Beperk en op Nasionale Paaie, 1998 (Wet No. 7 van 1998), wysig ek hiermee Verklaring No. 252 van 2007 deur dit in sy geheel te vervang met bygaande velle 1 tot 12 van Plan No. P1204/20.

(Nasionale Pad N12 Seksie 16: Klerksdorp – Potchefstroom)


MINISTER VAN VERVOER



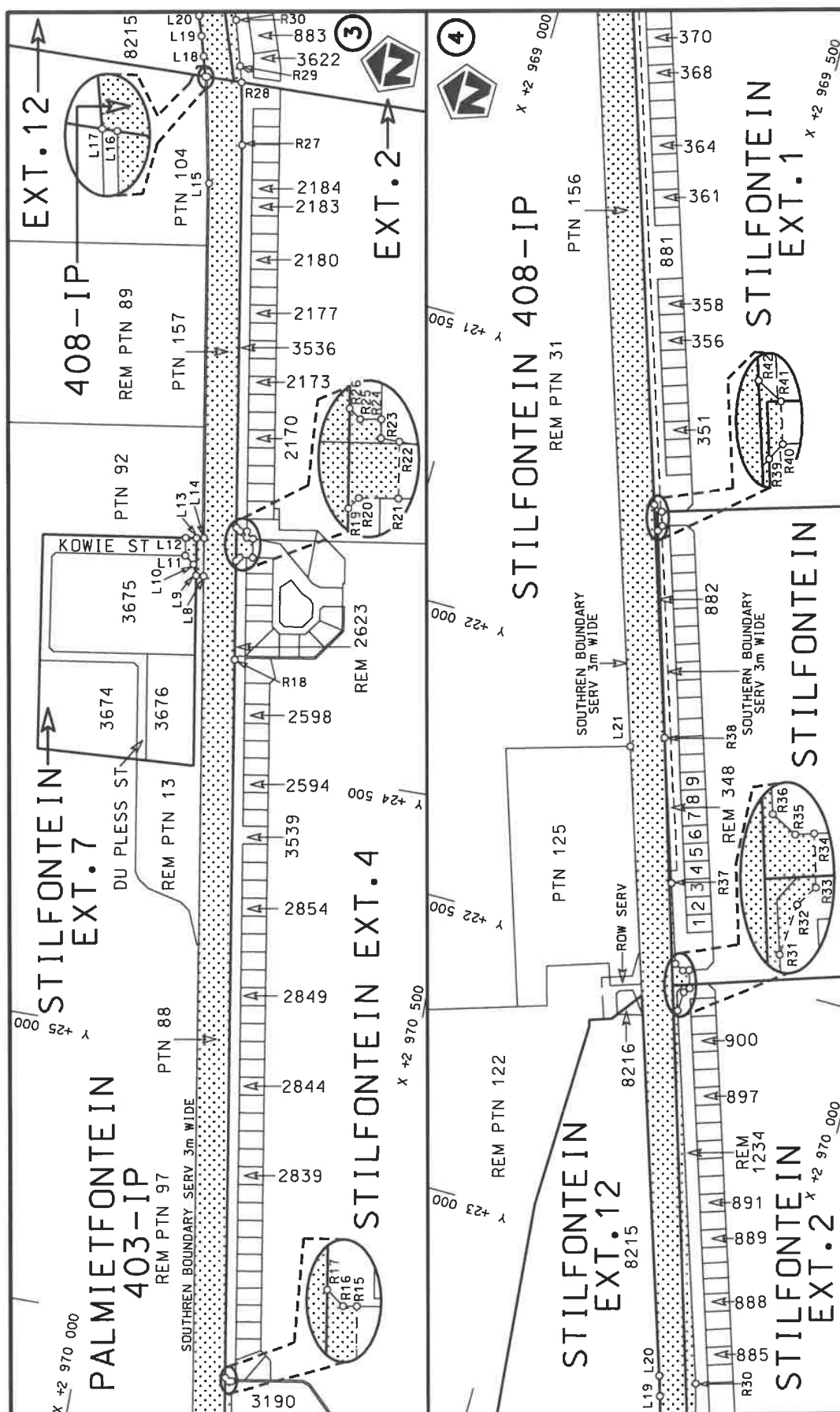
steldie padreserwe voor van 'n gedeelte
represents the road reserve of a portion
van Nasionale Roete N12 Seksie
of National Route Section




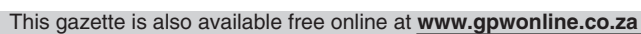
Die figuur getoon
The figure shown


Die Suid Afrikaanse Nasionale Padagentskap MSB Bpk
The South African National Roads Agency SOC Ltd

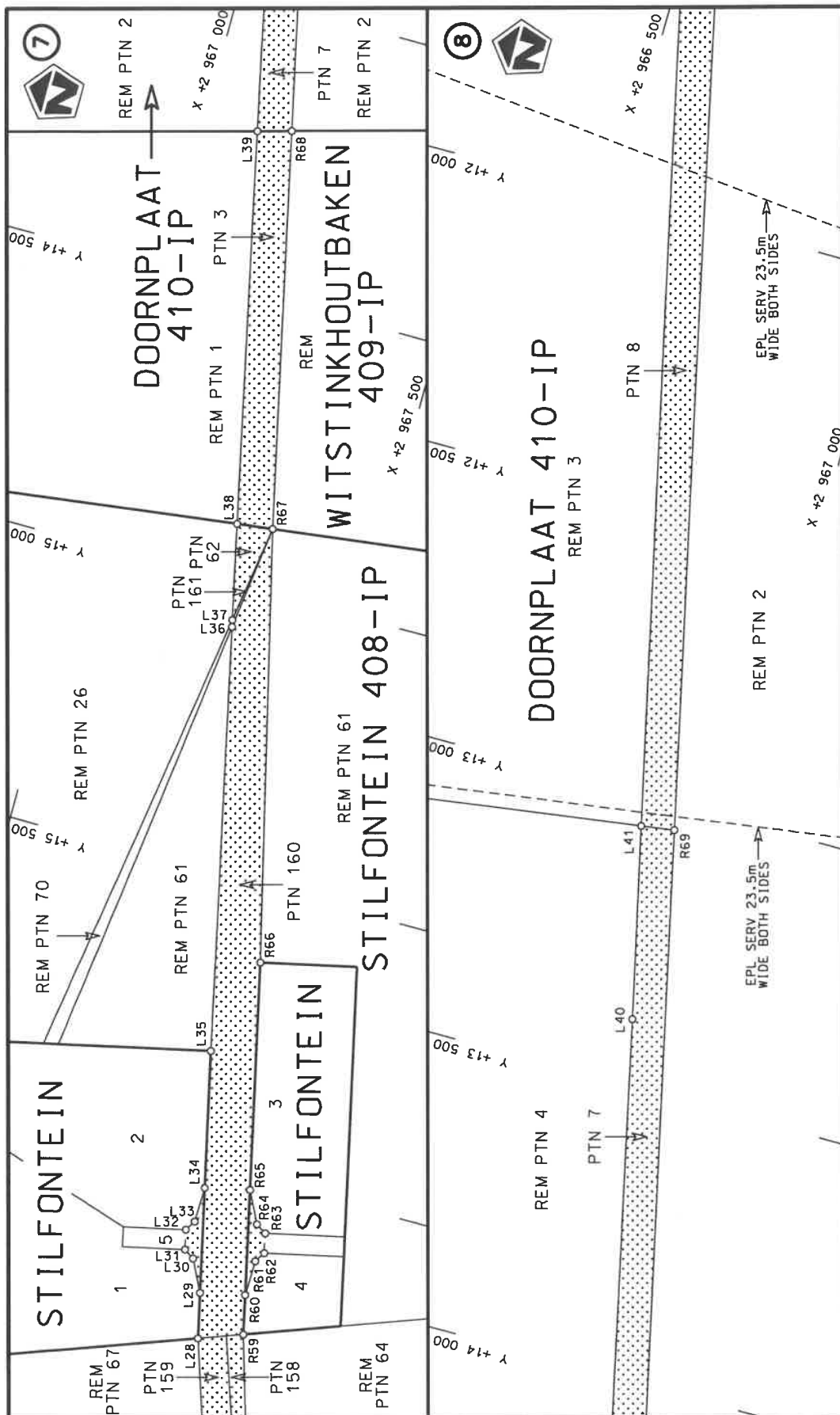
Vel
Sheet 1 of 12
Plan P1204/20



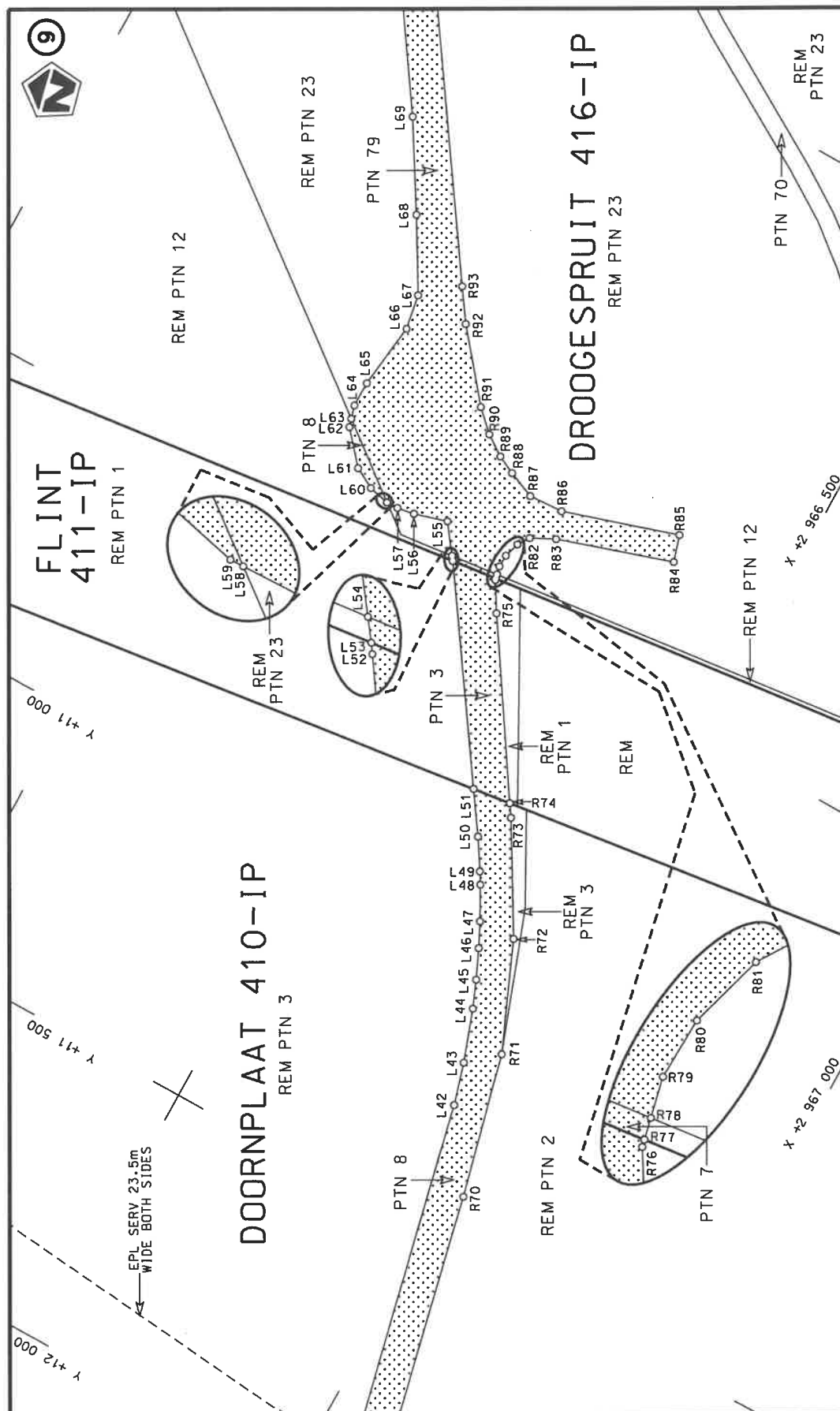
Die Suid Afrikaanse Nasionale Padagentskap MSB Bpk The South African National Roads Agency SOC Ltd	Die figuur getoon The figure shown		stel die padreserwe voor van 'n gedeelte represents the road reserve of a portion van Nasionale Roete N12 of National Route	Vel Sheet 2 of 12
			16	Plan P1204/20



Die Suid Afrikaanse Nasionale Padagentskap MSB Bpk The South African National Roads Agency SOC Ltd	Die figuur getoon The figure shown		stel die padreserwe voor van 'n gedeelte represents the road reserve of a portion van Nasionale Roete N12 of National Route	Vel Sheet 3 of 12 Plan 16 P1204/20
---	---	--	--	--



Die Suid Afrikaanse Nasionale Padagentskap MSB Bpk The South African National Roads Agency SOC Ltd	Die figuur getoon The figure shown	stel die padreserwe voor van 'n gedeelte represents the road reserve of a portion van Nasionale Roete N12 of National Route Section	Vel Sheet 4 of 12 Plan P1204/20
---	---------------------------------------	--	--



Vel
Sheet 5
of 12

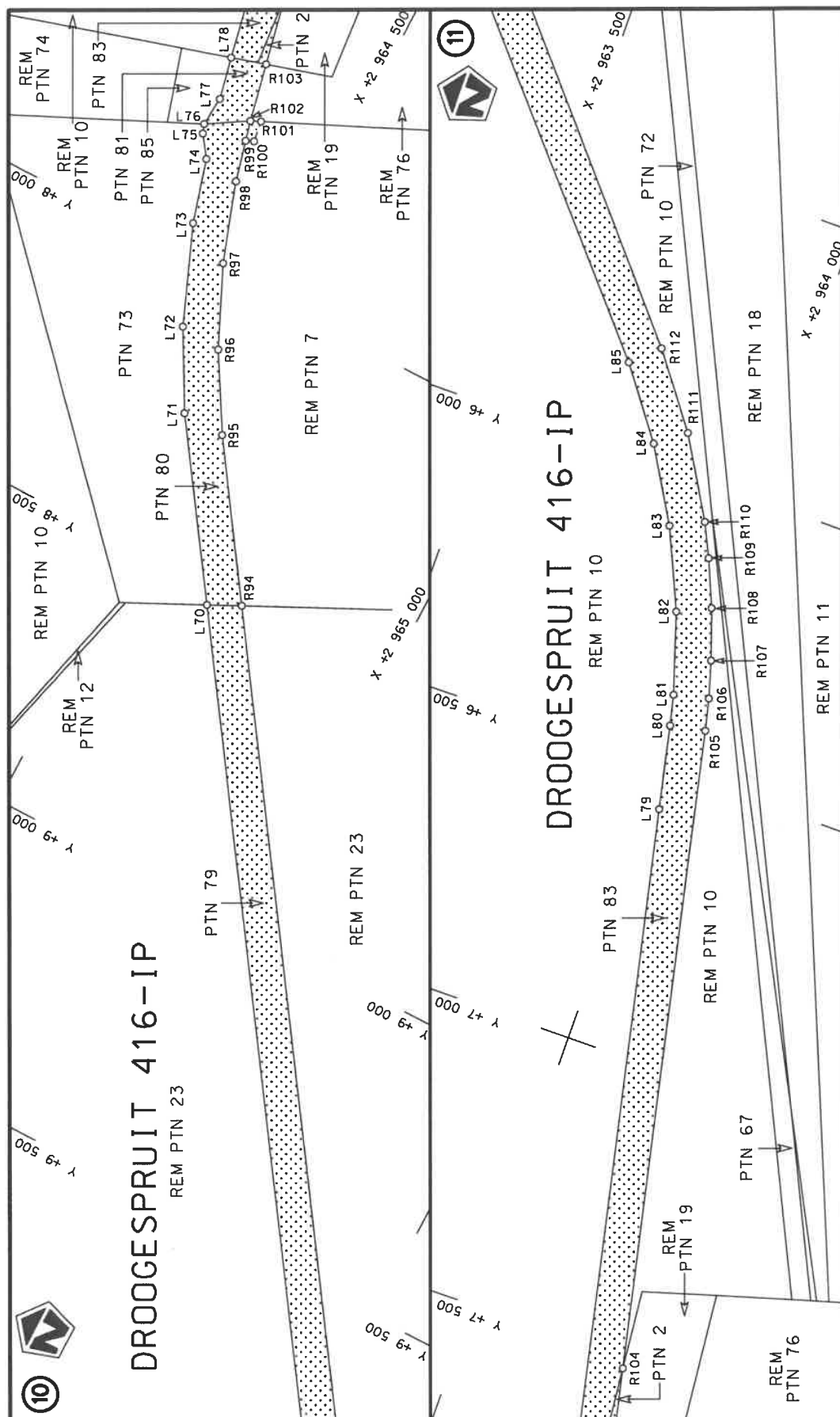
Plan
P1204/20

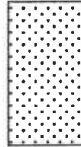
stel die padreserwe voor van 'n gedeelte
represents the road reserve of a portion
van Nasionale Roete N12 Sektie
of National Route Section

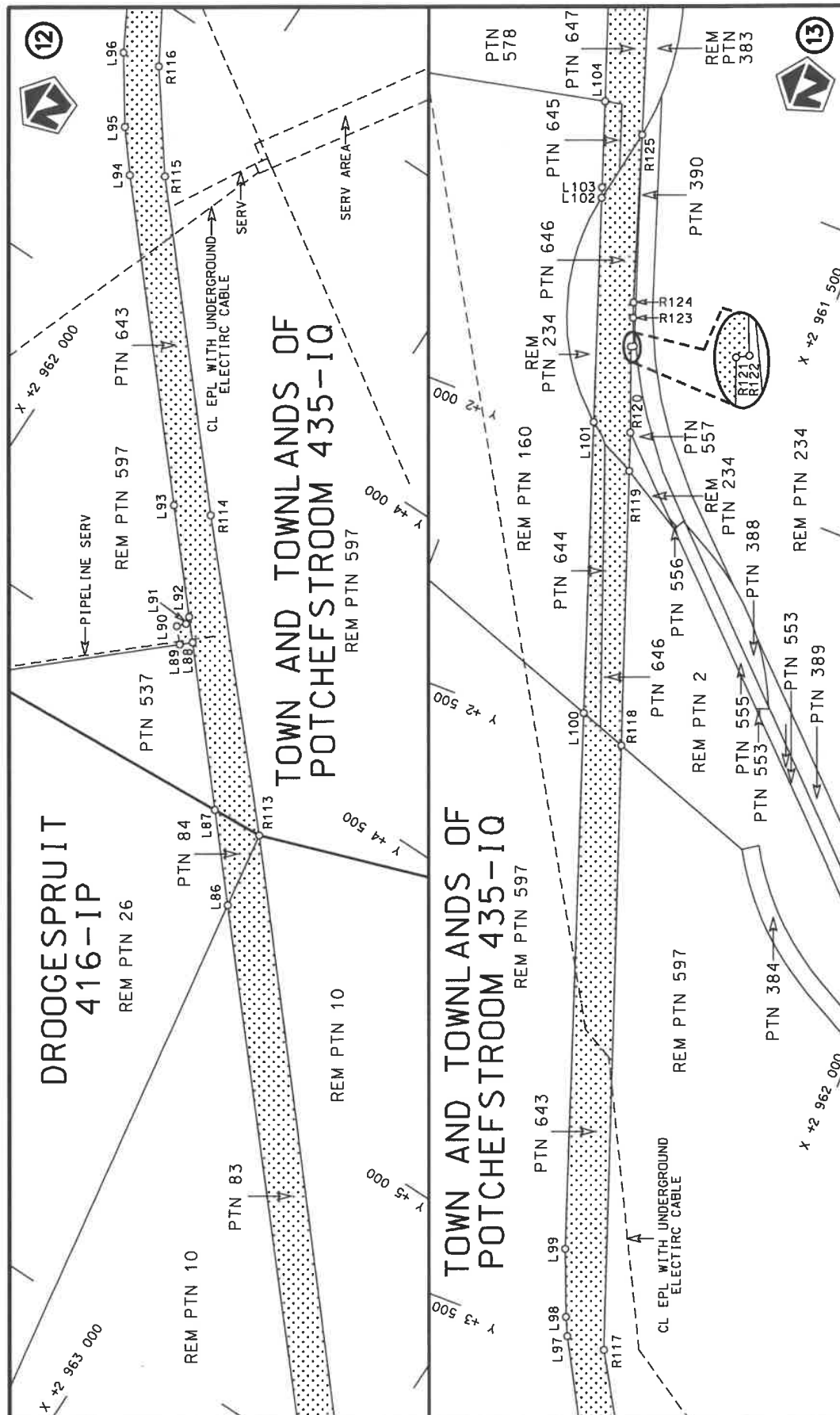


Die figuur getoon
The figure shown

Die Suid Afrikaanse Nasionale Padagentskap MSB Bpk
The South African National Roads Agency SOC Ltd



Die Suid Afrikaanse Nasionale Padagentskap MSB Bpk The South African National Roads Agency SOC Ltd	Die figuur getoon The figure shown		steldie padreserwe voor van 'n gedeelte represents the road reserve of a portion van Nasionale Roete N12 of National Route	16 16	Plan P1204/20	Vel Sheet 6 of 12	12 12
---	---------------------------------------	---	---	----------	------------------	----------------------	----------

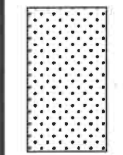


Vel
Sheet 7 of 12

Plan
P1204/20

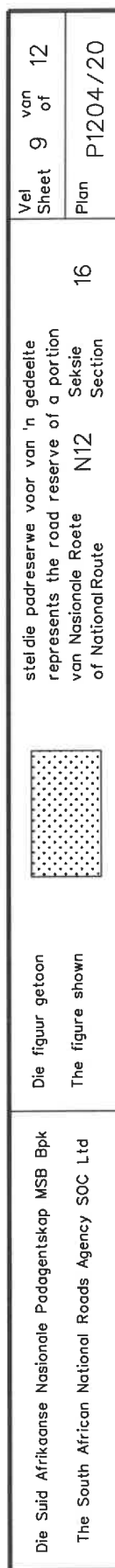
steeldie padreserwe voor van 'n gedeelte
represents the road reserve of a portion
van Nasionale Roete N12
of National Route

Seksie
Section



Die figuur getoon
The figure shown

Die Suid Afrikaanse Nasionale Padagentskap MSB Bpk
The South African National Roads Agency SOC Ltd



PADRESERWE KOÖRDINATE / ROAD RESERVE CO-ORDINATES									
LINKERKANT/LEFT HAND SIDE					REGTERKANT/RIGHT HAND SIDE				
	Y		X	WG 27°		Y		X	
L1	30	172.17	2	970	929.18	R1	30	126.46	2 970 985.15
L2	30	107.20	2	970	919.07	R2	30	098.40	2 970 980.72
L3	29	036.47	2	970	752.41	R3	29	027.23	2 970 811.36
L4	28	979.90	2	970	728.42	R4	28	964.82	2 970 816.90
L5	28	908.58	2	970	717.73	R5	28	906.50	2 970 807.94
L6	28	844.98	2	970	722.33	R6	28	847.74	2 970 782.99
L7	26	570.04	2	970	363.37	R7	28	821.77	2 970 778.89
L8	24	185.36	2	969	987.06	R8	26	571.56	2 970 424.01
L9	24	187.42	2	969	974.01	R9	25	812.15	2 970 304.21
L10	24	168.67	2	969	966.06	R10	25	795.37	2 970 305.75
L11	24	156.00	2	969	948.89	R11	25	733.84	2 970 311.17
L12	24	124.81	2	969	944.44	R12	25	716.69	2 970 323.67
L13	24	122.03	2	969	963.71	R13	25	691.85	2 970 319.82
L14	24	119.90	2	969	976.74	R14	25	672.00	2 970 291.59
L15	23	501.68	2	969	879.18	R15	25	579.95	2 970 276.38
L16	23	317.06	2	969	843.55	R16	25	580.80	2 970 270.99
L17	23	317.12	2	969	840.23	R17	25	575.56	2 970 263.79
L18	23	282.41	2	969	831.29	R18	24	322.23	2 970 066.26
L19	23	247.72	2	969	821.56	R19	24	150.20	2 970 039.14
L20	23	213.29	2	969	811.03	R20	24	143.20	2 970 044.24
L21	22	154.19	2	969	467.33	R21	24	139.58	2 970 067.21
L22	19	824.20	2	968	711.21	R22	24	106.51	2 970 062.10
L23	18	459.43	2	968	268.05	R23	24	106.37	2 970 051.16
L24	18	449.83	2	968	249.21	R24	24	095.32	2 970 049.42
L25	18	386.70	2	968	228.32	R25	24	097.35	2 970 037.16
L26	18	374.59	2	968	241.09	R26	24	092.13	2 970 029.99
L27	18	087.46	2	968	146.06	R27	23	425.22	2 969 924.88
L28	16	297.07	2	967	558.86	R28	23	316.40	2 969 905.01
L29	16	219.05	2	967	541.17	R29	23	288.54	2 969 897.58
L30	16	163.85	2	967	513.28	R30	23	209.89	2 969 876.66
L31	16	152.54	2	967	495.33	R31	22	582.32	2 969 671.44
L32	16	118.40	2	967	487.59	R32	22	548.45	2 969 673.14
L33	16	100.46	2	967	498.90	R33	22	538.67	2 969 681.62
L34	16	038.64	2	967	500.27	R34	22	508.27	2 969 672.23
L35	15	803.53	2	967	446.97	R35	22	511.72	2 969 661.60
L36	15	074.79	2	967	285.22	R36	22	503.64	2 969 645.71
L37	15	062.95	2	967	282.59	R37	22	367.95	2 969 601.34
L38	14	897.86	2	967	245.95	R38	22	123.57	2 969 521.44
L39	14	224.04	2	967	096.39	R39	21	774.57	2 969 413.17
L40	13	384.33	2	966	910.01	R40	21	764.17	2 969 418.62
L41	13	052.62	2	966	834.82	R41	21	740.19	2 969 410.88
L42	11	281.32	2	966	433.30	R42	21	731.85	2 969 394.96
L43	11	207.80	2	966	411.68	R43	20	900.76	2 969 126.63
L44	11	116.85	2	966	379.39	R44	20	867.97	2 969 123.71
L45	11	069.26	2	966	359.71	R45	20	851.08	2 969 133.64
L46	11	018.46	2	966	336.60	R46	20	813.86	2 969 121.55
L47	10	976.05	2	966	315.63	R47	20	812.67	2 969 098.18
L48	10	919.06	2	966	284.68	R48	20	673.61	2 969 053.29
L49	10	899.14	2	966	272.64	R49	19	826.56	2 968 782.94
L50	10	846.96	2	966	240.02	R50	19	808.46	2 968 776.84
L51	10	777.17	2	966	192.56	R51	18	441.44	2 968 329.08
					Vel 10 Van 12 Sheet of P1204/20				

PADRESERVE KOÖRDINATE / ROAD RESERVE CO-ORDINATES									
LINKERKANT/LEFT HAND SIDE					REGTERKANT/RIGHT HAND SIDE				
	Y		X	WG 27°		Y		X	
L52	10 443.61	2 965	965.73		R52	18 439.57	2 968	336.47	
L53	10 443.25	2 965	965.46		R53	18 434.79	2 968	355.33	
L54	10 436.13	2 965	960.19		R54	18 390.29	2 968	346.79	
L55	10 386.74	2 965	923.62		R55	18 376.66	2 968	315.22	
L56	10 403.56	2 965	865.73		R56	18 058.26	2 968	207.64	
L57	10 408.86	2 965	835.11		R57	17 711.69	2 968	090.58	
L58	10 409.38	2 965	814.62		R58	16 739.13	2 967	776.55	
L59	10 409.40	2 965	813.83		R59	16 269.18	2 967	634.57	
L60	10 400.92	2 965	776.85		R60	16 201.35	2 967	619.19	
L61	10 381.30	2 965	740.02		R61	16 139.52	2 967	620.55	
L62	10 325.51	2 965	691.38		R62	16 121.58	2 967	631.87	
L63	10 311.04	2 965	687.26		R63	16 087.45	2 967	624.13	
L64	10 287.89	2 965	680.67		R64	16 076.13	2 967	606.18	
L65	10 243.08	2 965	680.78		R65	16 020.93	2 967	578.29	
L66	10 124.97	2 965	695.81		R66	15 630.56	2 967	489.79	
L67	10 063.67	2 965	685.03		R67	14 890.34	2 967	308.34	
L68	9 941.07	2 965	613.31		R68	14 208.00	2 967	154.29	
L69	9 793.41	2 965	523.43		R69	13 044.51	2 966	892.49	
L70	8 527.16	2 964	661.27		R70	11 415.09	2 966	525.97	
L71	8 247.48	2 964	469.93		R71	11 162.76	2 966	462.51	
L72	8 114.19	2 964	396.74		R72	10 974.66	2 966	382.06	
L73	7 944.90	2 964	328.26		R73	10 790.04	2 966	274.51	
L74	7 834.59	2 964	296.44		R74	10 768.50	2 966	260.49	
L75	7 797.96	2 964	270.12		R75	10 487.03	2 966	077.44	
L76	7 782.01	2 964	264.45		R76	10 436.77	2 966	047.25	
L77	7 730.47	2 964	268.30		R77	10 434.24	2 966	046.68	
L78	7 657.10	2 964	252.24		R78	10 426.72	2 966	044.99	
L79	6 569.11	2 964	017.08		R79	10 412.53	2 966	041.79	
L80	6 424.42	2 963	985.82		R80	10 390.30	2 966	042.59	
L81	6 371.32	2 963	973.29		R81	10 363.31	2 966	050.57	
L82	6 232.28	2 963	928.90		R82	10 343.20	2 966	063.90	
L83	6 094.13	2 963	867.09		R83	10 322.14	2 966	105.54	
L84	5 967.35	2 963	792.70		R84	10 257.47	2 966	306.05	
L85	5 847.58	2 963	703.23		R85	10 211.00	2 966	291.58	
L86	4 761.82	2 962	761.12		R86	10 274.65	2 966	089.94	
L87	4 634.11	2 962	650.45		R87	10 277.93	2 966	028.94	
L88	4 409.96	2 962	456.34		R88	10 257.99	2 965	981.49	
L89	4 425.15	2 962	439.38		R89	10 242.23	2 965	949.14	
L90	4 401.02	2 962	417.43		R90	10 217.49	2 965	913.44	
L91	4 388.85	2 962	428.52		R91	10 182.61	2 965	876.97	
L92	4 375.72	2 962	426.53		R92	10 067.56	2 965	782.70	
L93	4 226.67	2 962	296.77		R93	10 012.61	2 965	745.10	
L94	3 785.28	2 961	913.91		R94	8 500.26	2 964	716.30	
L95	3 719.34	2 961	860.19		R95	8 250.85	2 964	546.63	
L96	3 611.89	2 961	786.31		R96	8 121.04	2 964	470.78	
L97	3 483.16	2 961	715.12		R97	7 983.10	2 964	407.78	
L98	3 452.47	2 961	700.73		R98	7 845.28	2 964	360.74	
L99	3 341.49	2 961	656.38		R99	7 774.53	2 964	342.50	
L100	2 451.95	2 961	346.41		R100	7 768.35	2 964	356.40	
L101	1 969.47	2 961	178.29		R101	7 733.63	2 964	347.44	
L102	1 597.90	2 961	048.81		R102	7 739.98	2 964	333.59	
					<div> <div>Vel Sheet</div> <div>11</div> <div>Van of</div> <div>12</div> <div>P1204/20</div> </div>				

PADRESERWE KOÖRDINATE / ROAD RESERVE CO-ORDINATES					
LINKERKANT/LEFT HAND SIDE			REGTERKANT/RIGHT HAND SIDE		
	Y	X	WG 27 ^a	Y	X
L103	1 580.56	2 961 042.77		R103	7 639.18 2 964 311.86
L104	1 438.08	2 960 993.11		R104	7 517.01 2 964 285.52
L105	280.99	2 960 582.90		R105	6 412.24 2 964 047.32
L106	-25.45	2 960 517.34		R106	6 356.61 2 964 034.10
L107	-32.11	2 960 500.50		R107	6 292.74 2 964 015.63
L108	-1 428.03	2 960 177.74		R108	6 205.50 2 963 985.44
L109	-1 561.35	2 960 140.41		R109	6 124.62 2 963 951.33
L110	-1 791.26	2 960 047.07		R110	6 066.86 2 963 923.52
L111	-1 817.98	2 960 033.84		R111	5 929.86 2 963 843.00
L112	-1 822.91	2 960 014.66		R112	5 805.38 2 963 749.54
L113	-1 853.17	2 959 999.67		R113	4 629.02 2 962 739.80
L114	-1 869.67	2 960 008.23		R114	4 206.07 2 962 360.30
L115	-3 073.88	2 959 411.83		R115	3 753.33 2 961 966.26
L116	-3 087.39	2 959 405.14		R116	3 598.29 2 961 851.15
L117	-3 119.46	2 959 404.77		R117	3 482.77 2 961 783.61
L118	-3 912.42	2 959 037.66		R118	2 481.29 2 961 428.65
L119	-3 947.14	2 959 005.06		R119	2 027.18 2 961 267.70
L120	-3 943.71	2 958 997.38		R120	1 963.54 2 961 245.14
L121	-3 970.65	2 958 985.34		R121	1 822.66 2 961 191.38
L122	-3 981.97	2 958 991.18		R122	1 820.22 2 961 195.99
L123	-4 023.23	2 958 986.37		R123	1 774.06 2 961 176.77
L124	-4 808.76	2 958 615.74		R124	1 748.71 2 961 167.67
L125	-5 596.86	2 958 131.54		R125	1 469.04 2 961 075.34
L126	-5 881.00	2 957 956.96		R126	1 178.96 2 960 976.83
L127	-6 269.78	2 957 717.22		R127	1 183.20 2 960 961.87
L128	-6 354.08	2 957 665.24		R128	391.03 2 960 686.73
				R129	263.69 2 960 643.75
				R130	118.39 2 960 612.66
				R131	-38.75 2 960 579.04
				R132	-127.09 2 960 557.64
				R133	-1 443.62 2 960 238.77
				R134	-1 581.75 2 960 200.09
				R135	-1 817.11 2 960 104.54
				R136	-2 877.85 2 959 580.40
				R137	-3 468.14 2 959 308.46
				R138	-3 472.51 2 959 317.33
				R139	-4 701.49 2 958 750.10
				R140	-4 747.34 2 958 726.46
				R141	-5 913.44 2 958 009.74
				R142	-6 387.08 2 957 718.93
				Vel Sheet 12 Van of 12 P1204/20	

Printed by and obtainable from the Government Printer, Bosman Street, Private Bag X85, Pretoria, 0001
Contact Centre Tel: 012-748 6200. eMail: info.egazette@gpw.gov.za
Publications: Tel: (012) 748 6053, 748 6061, 748 6065