



Government Gazette Staatskoerant

REPUBLIC OF SOUTH AFRICA
REPUBLIEK VAN SUID AFRIKA

Vol. 702

11

December
Desember 2023

No. 49846



N.B. The Government Printing Works will not be held responsible for the quality of "Hard Copies" or "Electronic Files" submitted for publication purposes

ISSN 1682-5845



9 771682 584003

AIDS HELPLINE: 0800-0123-22 Prevention is the cure

IMPORTANT NOTICE:

THE GOVERNMENT PRINTING WORKS WILL NOT BE HELD RESPONSIBLE FOR ANY ERRORS THAT MIGHT OCCUR DUE TO THE SUBMISSION OF INCOMPLETE / INCORRECT / ILLEGIBLE COPY.

No FUTURE QUERIES WILL BE HANDLED IN CONNECTION WITH THE ABOVE.

Contents

<i>No.</i>	<i>Gazette No.</i>	<i>Page No.</i>
------------	------------------------	---------------------

GOVERNMENT NOTICES • GOEWERMENTSKENNISGEWINGS**Transport, Department of/ Vervoer, Departement van**

4177	South African National Roads Agency Limited and the National Roads Act (7/1998): Declaration Amendment of National Road R67 Section 2: Amendment of Declaration No. 305 of 2012.....	49846	3
4177	Suid-Afrikaanse Nasionale Padagentskap Beperk en Nasionale Paaie Wet (7/1998): Verklaring Wysiging van Nasionale Pad R67 Seksie 2: Wysiging van Verklaring No. 305 van 2012	49846	4

GOVERNMENT NOTICES • GOEWERMENTSKENNISGEWINGS

DEPARTMENT OF TRANSPORT

NO. 4177

11 December 2023

**THE SOUTH AFRICAN NATIONAL ROADS
AGENCY SOC LIMITED**Registration No: 1998/009584/30

DECLARATION AMENDMENT OF NATIONAL ROAD R67 SECTION 2

AMENDMENT OF DECLARATION No. 305 OF 2012.

By virtue of section 40(1)(b) of the South African National Roads Agency Limited and the National Roads Act 1998 (Act No. 7 of 1998), I hereby amend Declaration No. 305 of 2012 by substituting paragraph F(I) of the Schedule, with the accompanying sheets 1 to 32 of Plan No. P1230/22.

(National Road R67 Section 2: Grahamstown - Fort Beaufort)
MINISTER OF TRANSPORT

DEPARTEMENT VAN VERVOER

NO. 4177

11 Desember 2023

**DIE SUID-AFRIKAANSE NASIONALE
PADAGENTSKAP MSB BEPERK**

Registrasie No: 1998/009584/30

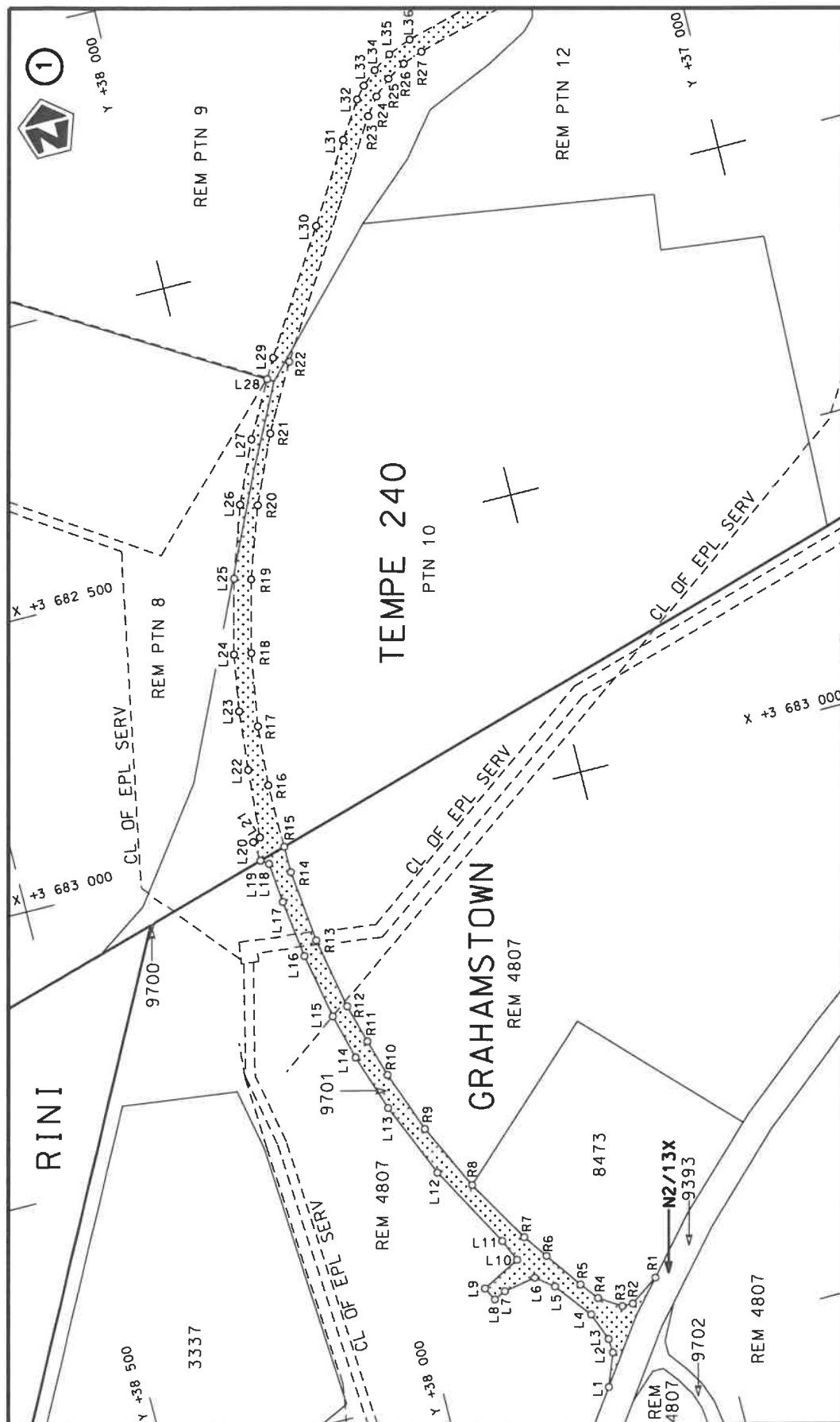
VERKLARING WYSIGING VAN NASIONALE PAD R67 SEKSIE 2

WYSIGING VAN VERKLARING No. 305 VAN 2012.

Kragtens Artikel 40(1)(b) van die Suid-Afrikaanse Nasionale Padagentskap Beperk en Nasionale Paaie Wet 1998 (Wet No. 7 van 1998), wysig ek hiermee Verklaring No. 305 van 2012 deur paragraaf F(l) van die Skedule te vervang, met bygaande velle 1 tot 32 van Plan No. P1230/22.

(Nasionale Pad R67 Seksie 2: Grahamstown - Fort Beaufort)


MINISTER VAN VERVOER



steldie padreserwe voor van 'n gedeelte
represents the road reserve of a portion
van Nasionale Roete R67 Sektie
of National Route Section

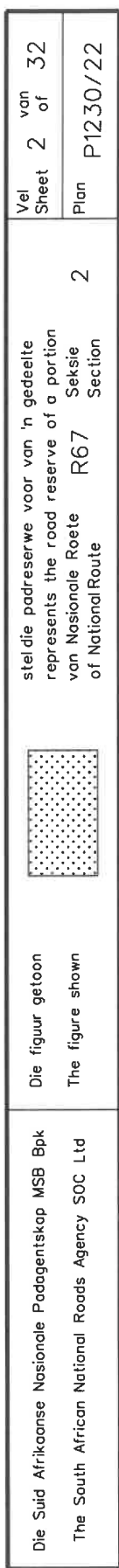


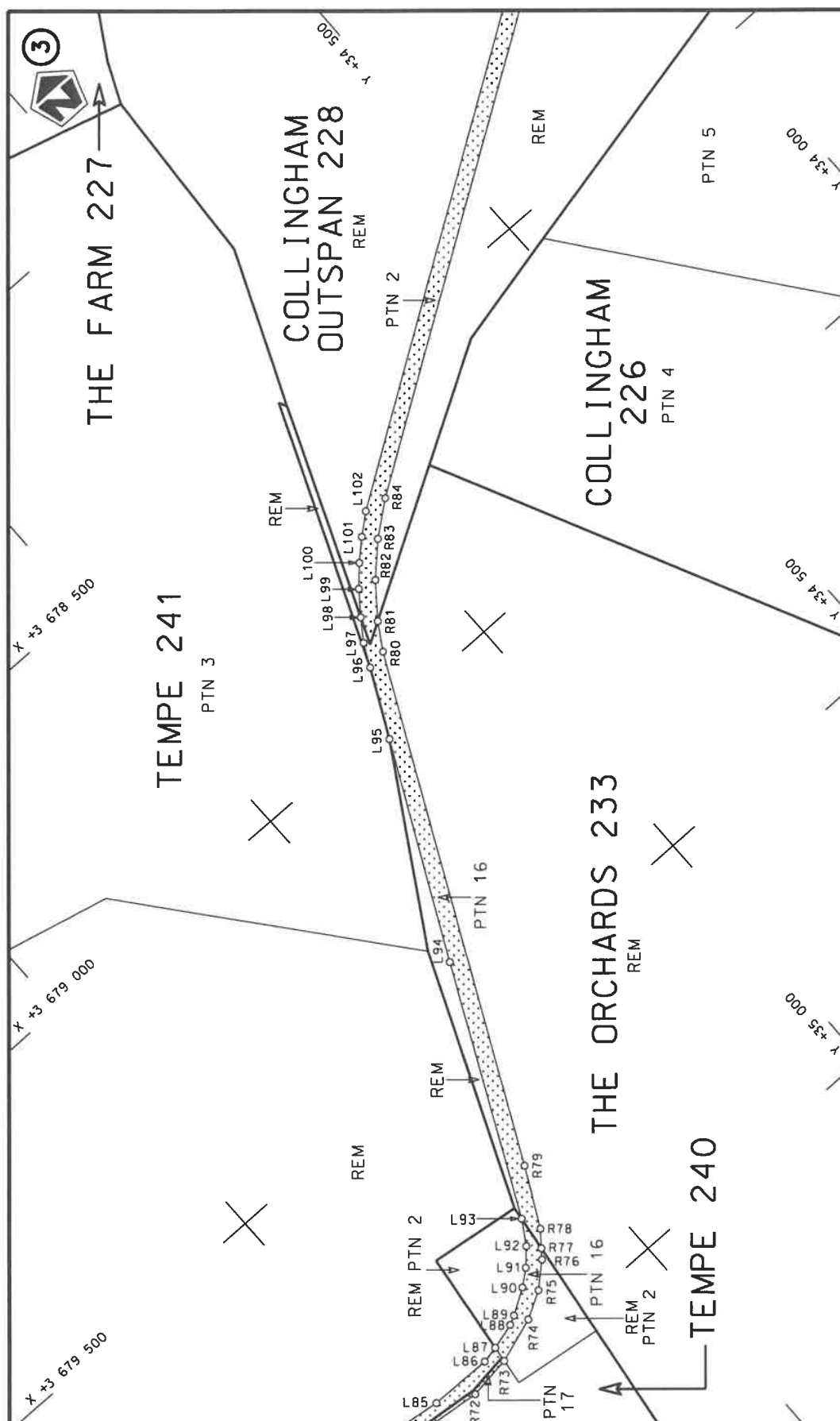
Die figuur getoon
The figure shown


Die Suid Afrikaanse Nasionale Padagentskap MSB Bpk
The South African National Roads Agency SOC Ltd

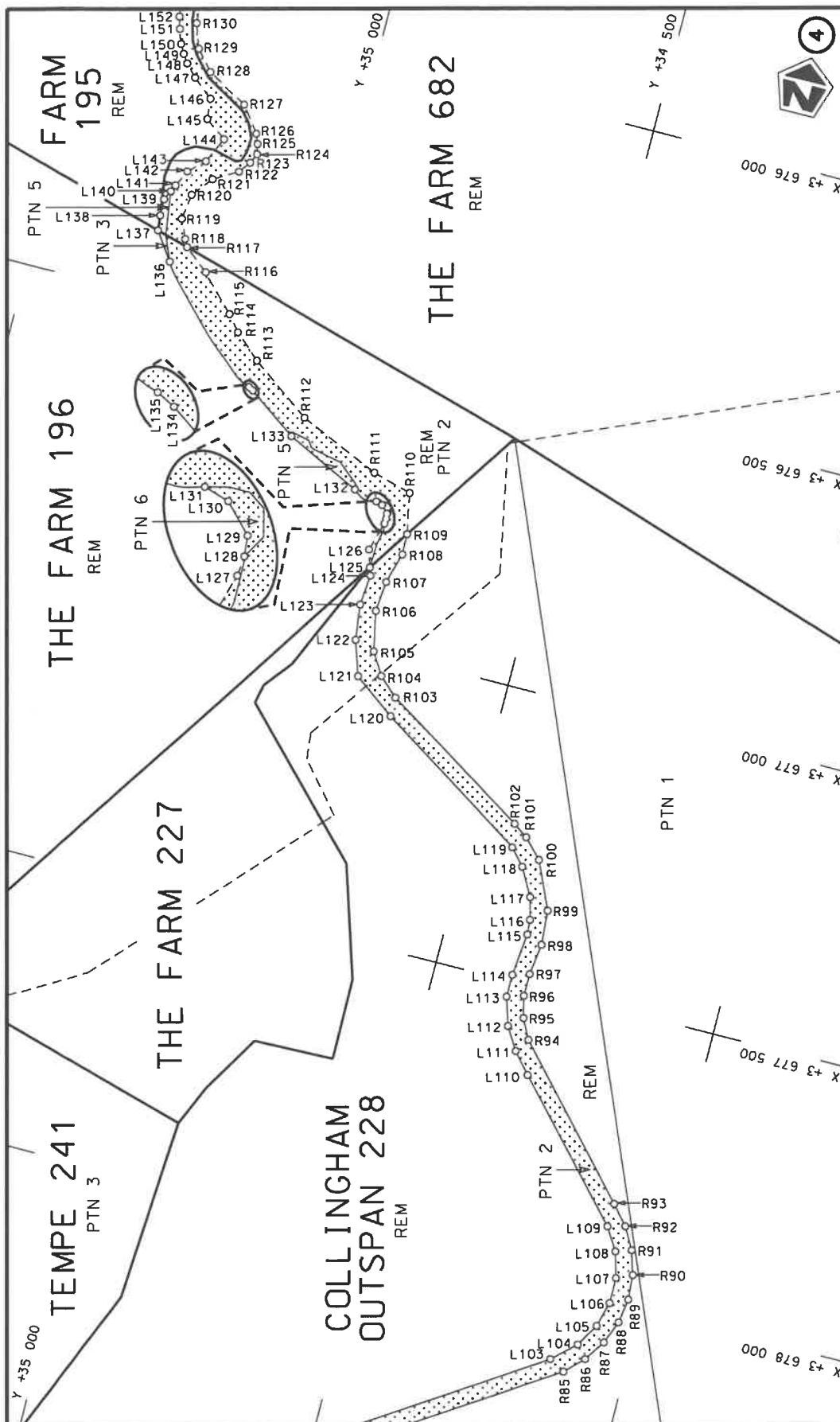
Vel
Sheet 1 of 32

Plan
P1230/22

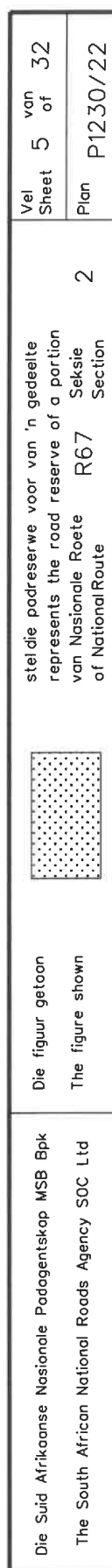


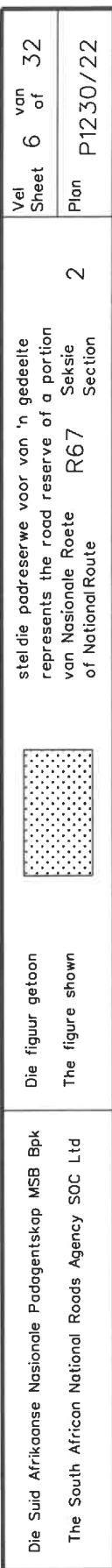


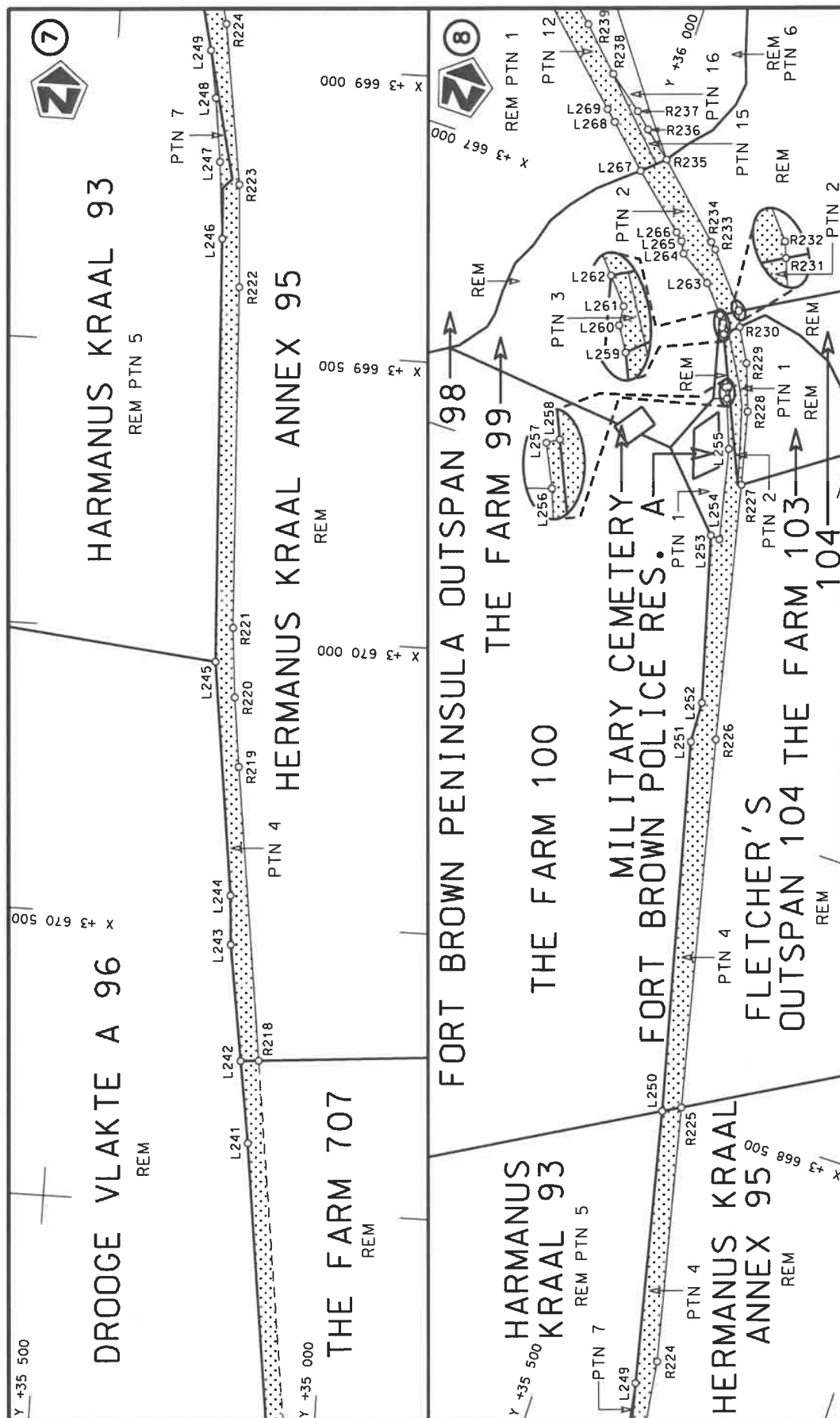
Die Suid Afrikaanse Nasionale Podagentskap MSB Bpk	Die figuur getoon		stel die padreserwe voor van 'n gedeelte represents the road reserve of a portion	Vel Sheet	3 of	32
The South African National Roads Agency SOC Ltd	The figure shown		van Nasionale Roete of National Route	Plan	2	P1230/22




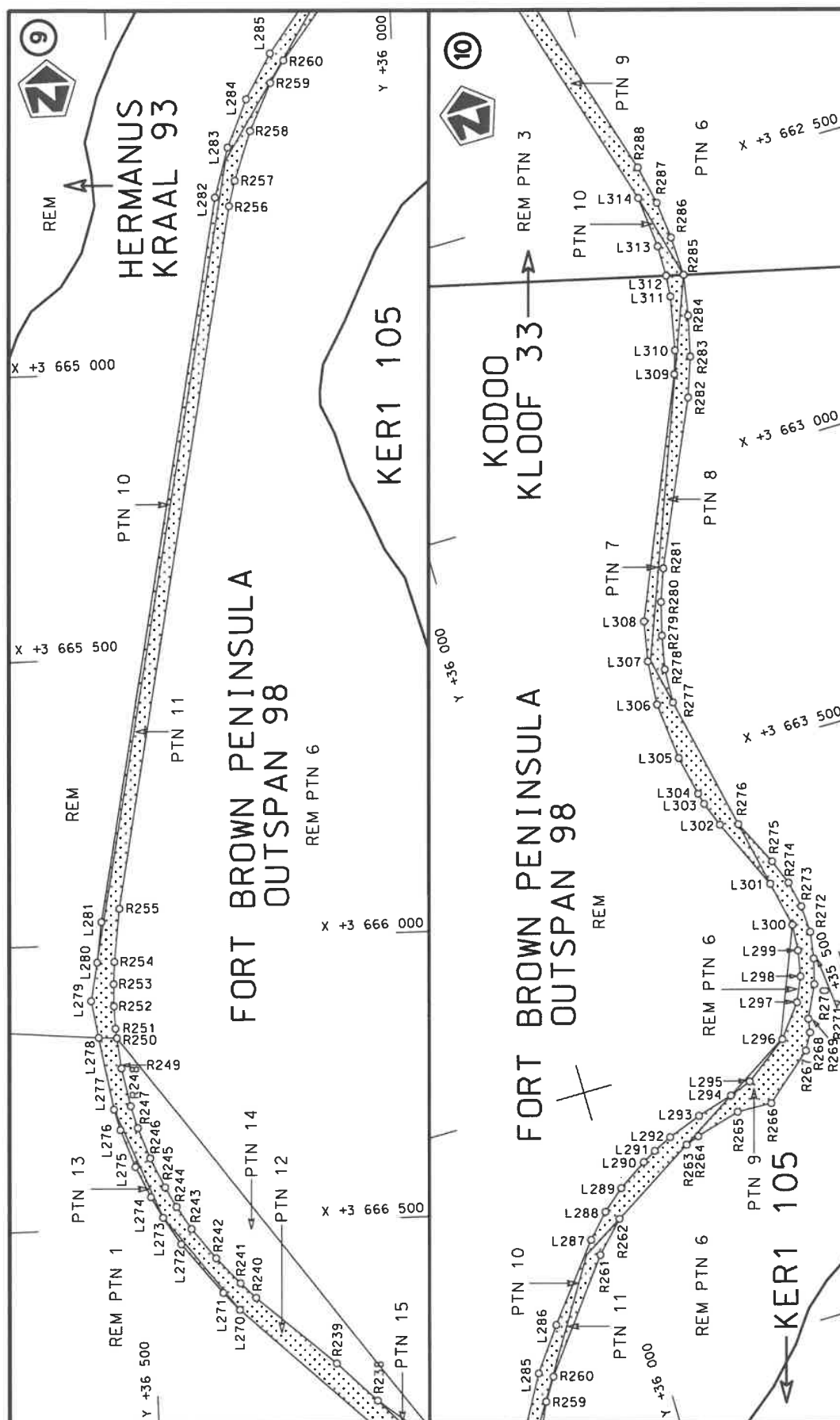
Die Suid Afrikaanse Nasionale Padagentskap MSB Bpk The South African National Roads Agency SOC Ltd	Die figuur getoon The figure shown	stel die padreserwe voor van 'n gedeelte represents the road reserve of a portion van Nasionale Roete R67 of National Route	Vel Sheet 4 of 32 Plan P1230/22
---	---------------------------------------	--	---------------------------------------



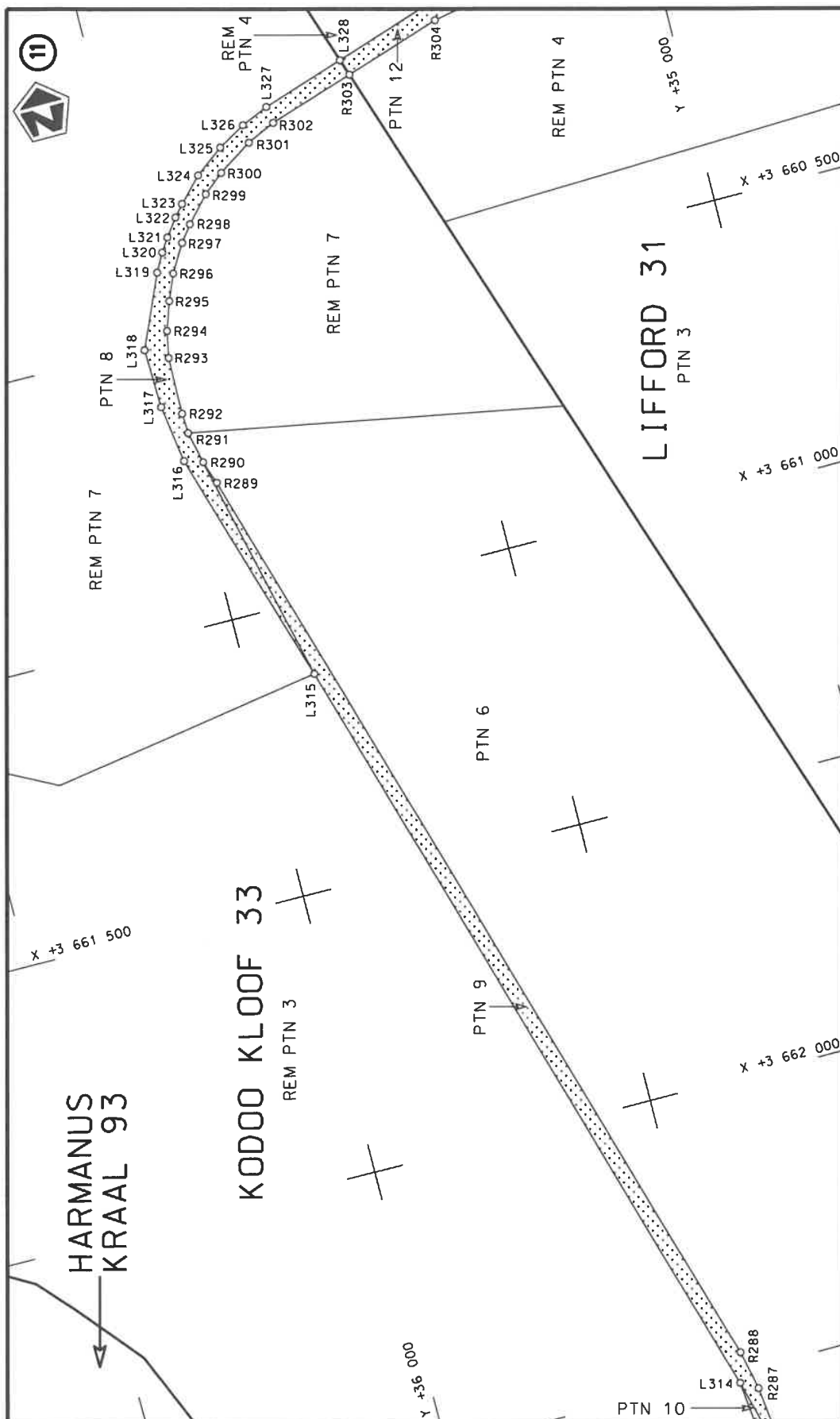




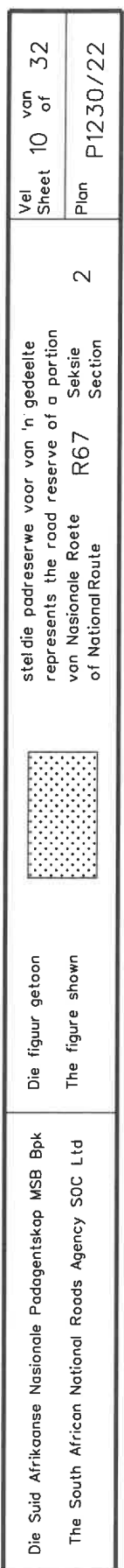
Die Suid Afrikaanse Nasionale Podagentskap MSB Bpk	Die figuur getoon		stel die podreserwe voor van 'n gedeelte represents the road reserve of a portion	Vel Sheet	7 of	32
The South African National Roads Agency SOC Ltd	The figure shown		van Nasionale Roete of National Route	R67	Seksie Section	2

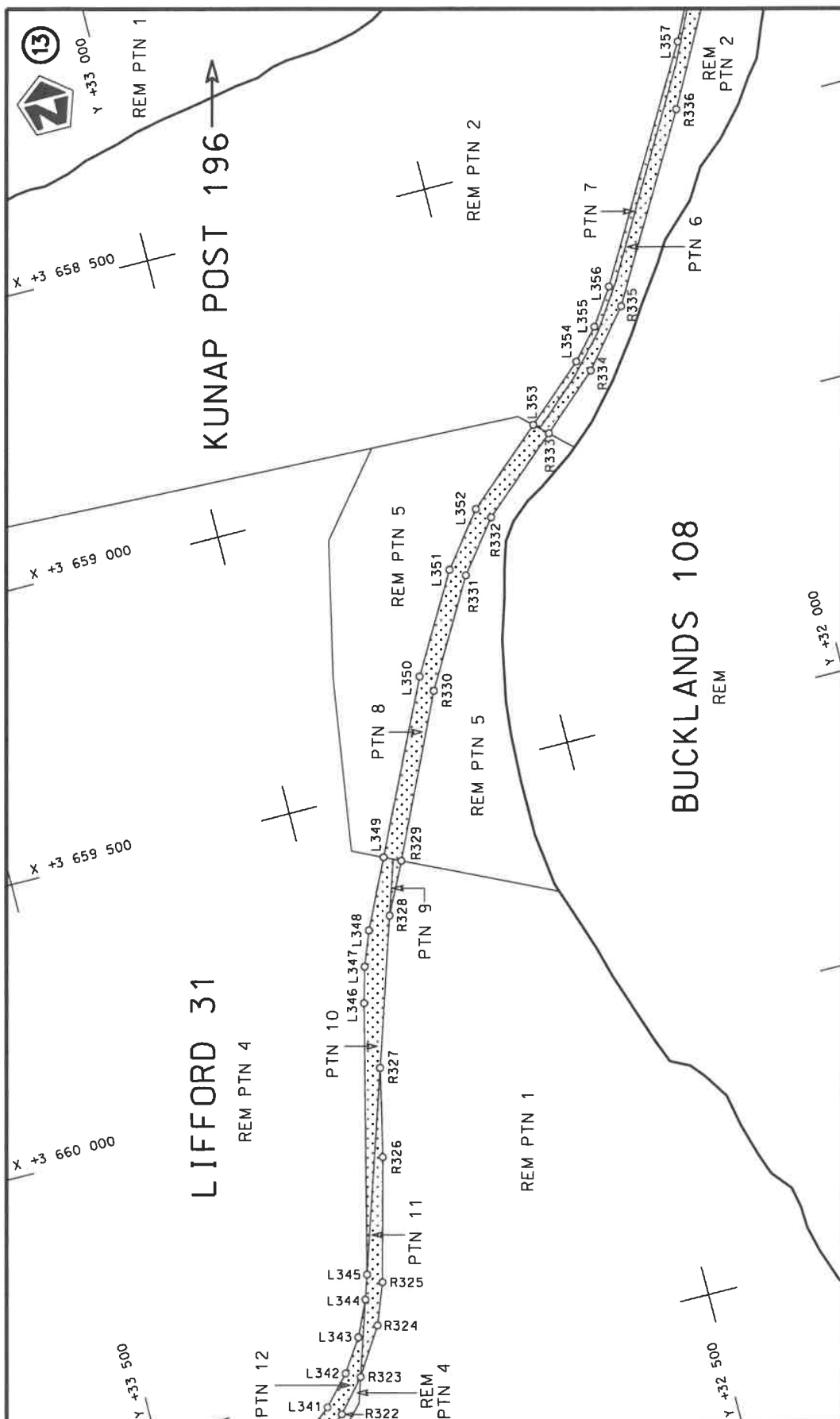


Die Suid Afrikaanse Nasionale Padagentskap MSB Bpk The South African National Roads Agency SOC Ltd	Die figuur getoon The figure shown	<div data-bbox="1284 1086 1364 1243" data-label="Image"> </div> stel die padreserwe voor van 'n gedeelte represents the road reserve of a portion van Nasionale Roete R67 of National Route	Vel Sheet 8 of 32 Plan P1230/22
---	---------------------------------------	--	---------------------------------------

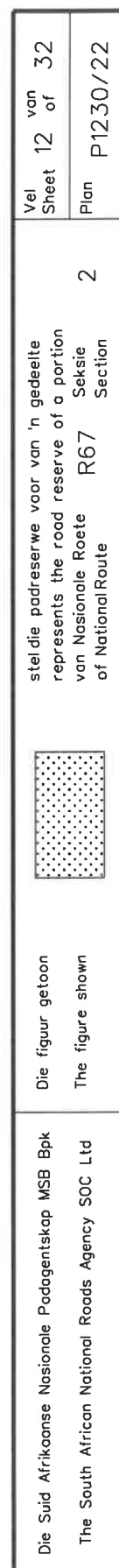


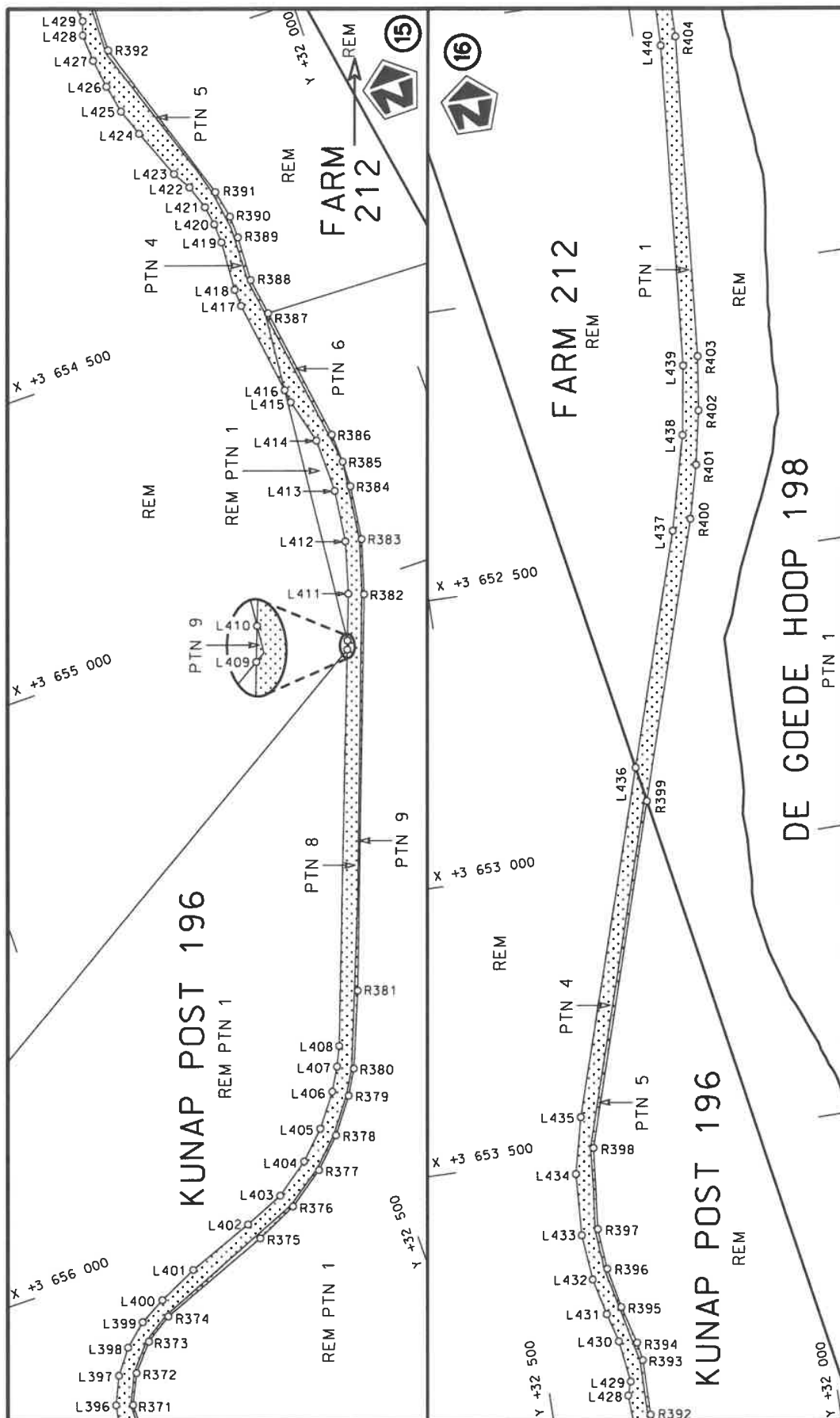
Die Suid Afrikaanse Nasionale Padagentskap MSB Bpk The South African National Roads Agency SOC Ltd	Die figuur getoon The figure shown	<div data-bbox="1284 1086 1364 1232" data-label="Image"> </div>	stel die padreserwe voor van 'n gedeelte represents the road reserve of a portion van Nasionale Roete R67 of National Route	Vel Sheet 9 of 32	Plan P1230/22
---	---------------------------------------	---	--	-------------------------	------------------





Die Suid Afrikaanse Nasionale Padagentskap MSB Bpk The South African National Roads Agency SOC Ltd	Die figuur getoon The figure shown	stel die padreserwe voor van 'n gedeelte represents the road reserve of a portion van Nasionale Roete R67 of National Route Section	2	Plan P1230/22	Vel 11 of 32	Sheet 11 of 32
---	---------------------------------------	--	---	---------------	--------------	----------------





Vel
Sheet 13 of 32

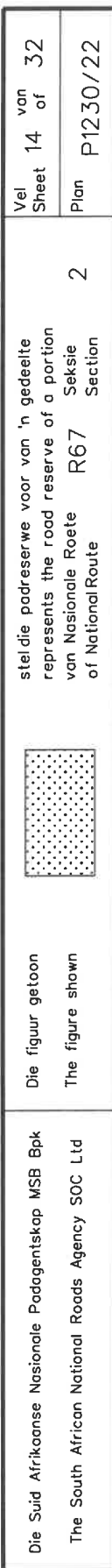
Plan
P1230/22

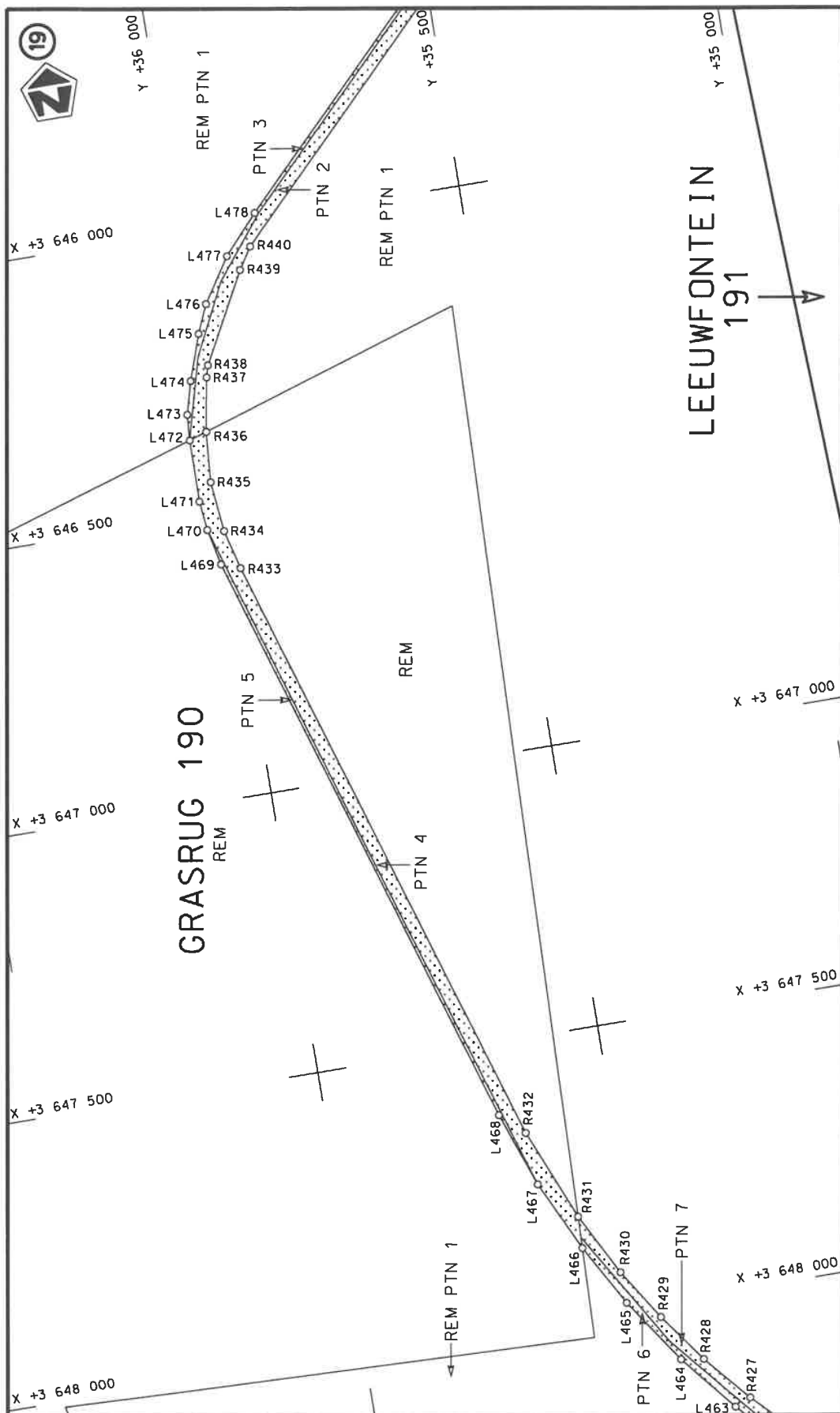
steeldie padreserwe voor van 'n gedeelte
represents the road reserve of a portion
van Nasionale Roete R67 Sektie
of National Route Section

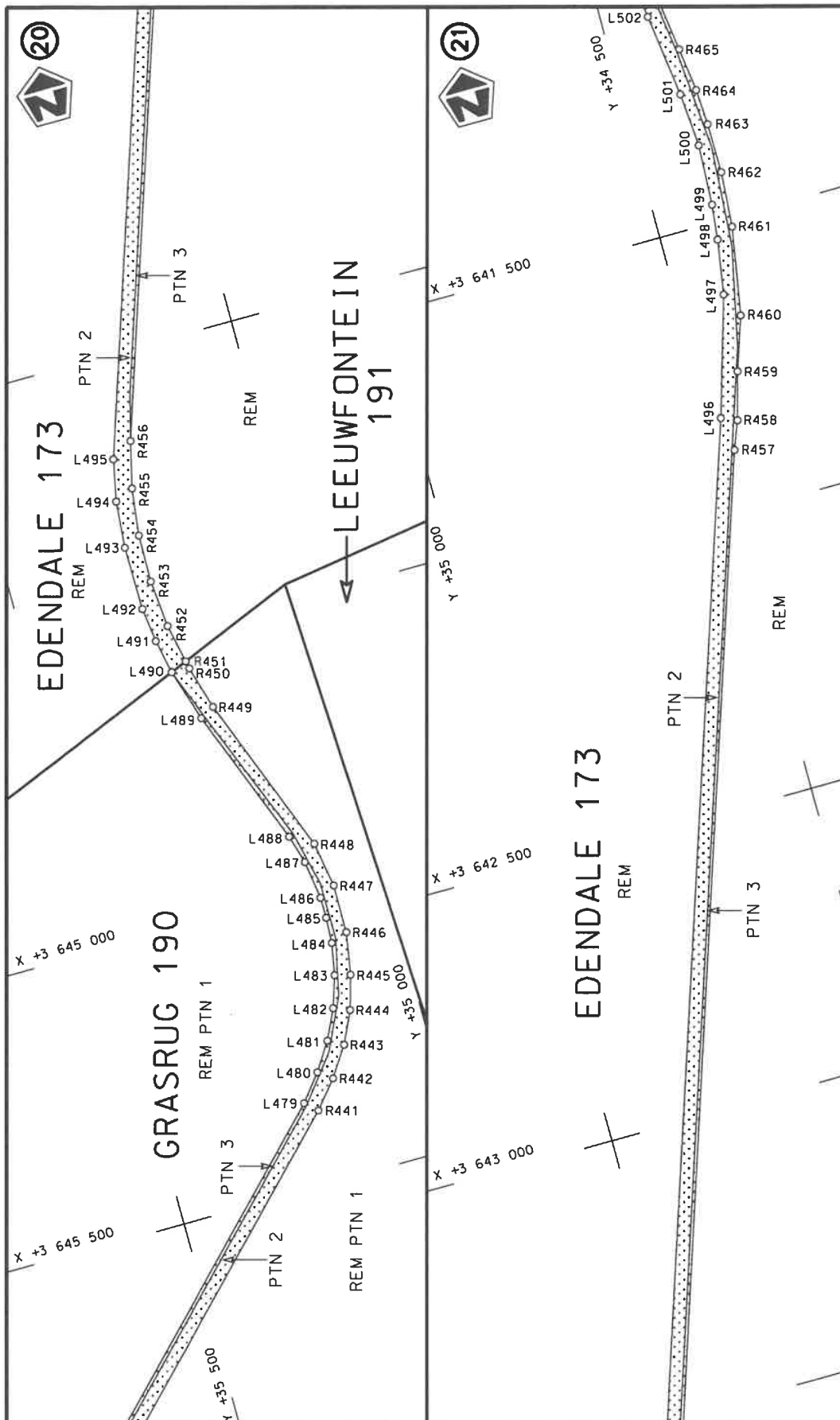


Die figuur getoon
The figure shown

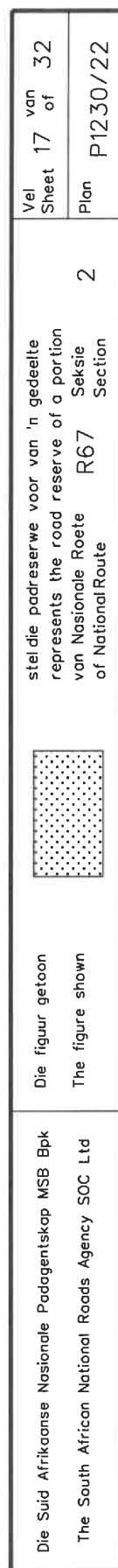
Die Suid Afrikaanse Nasionale Padagentskap MSB Bpk
The South African National Roads Agency SOC Ltd

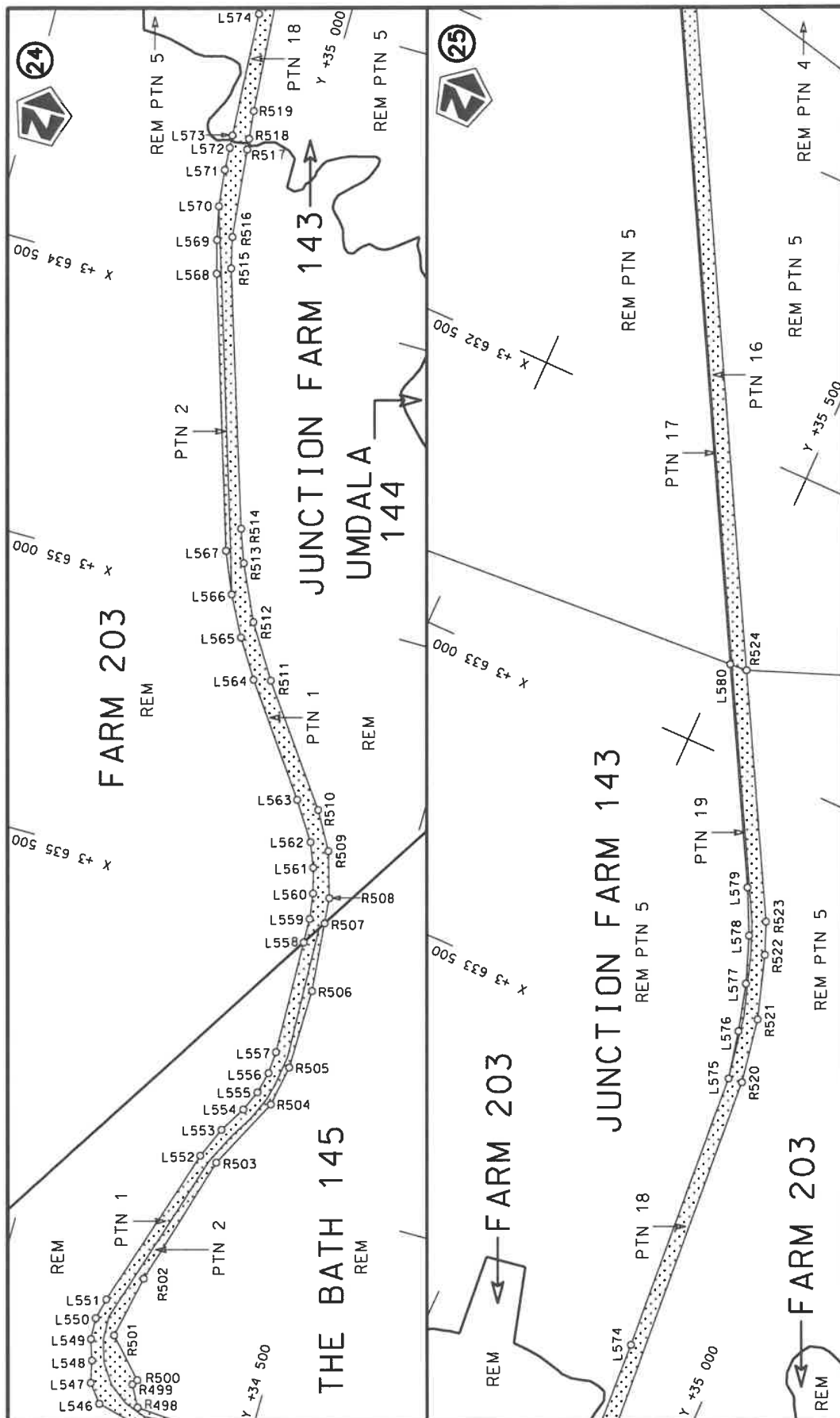




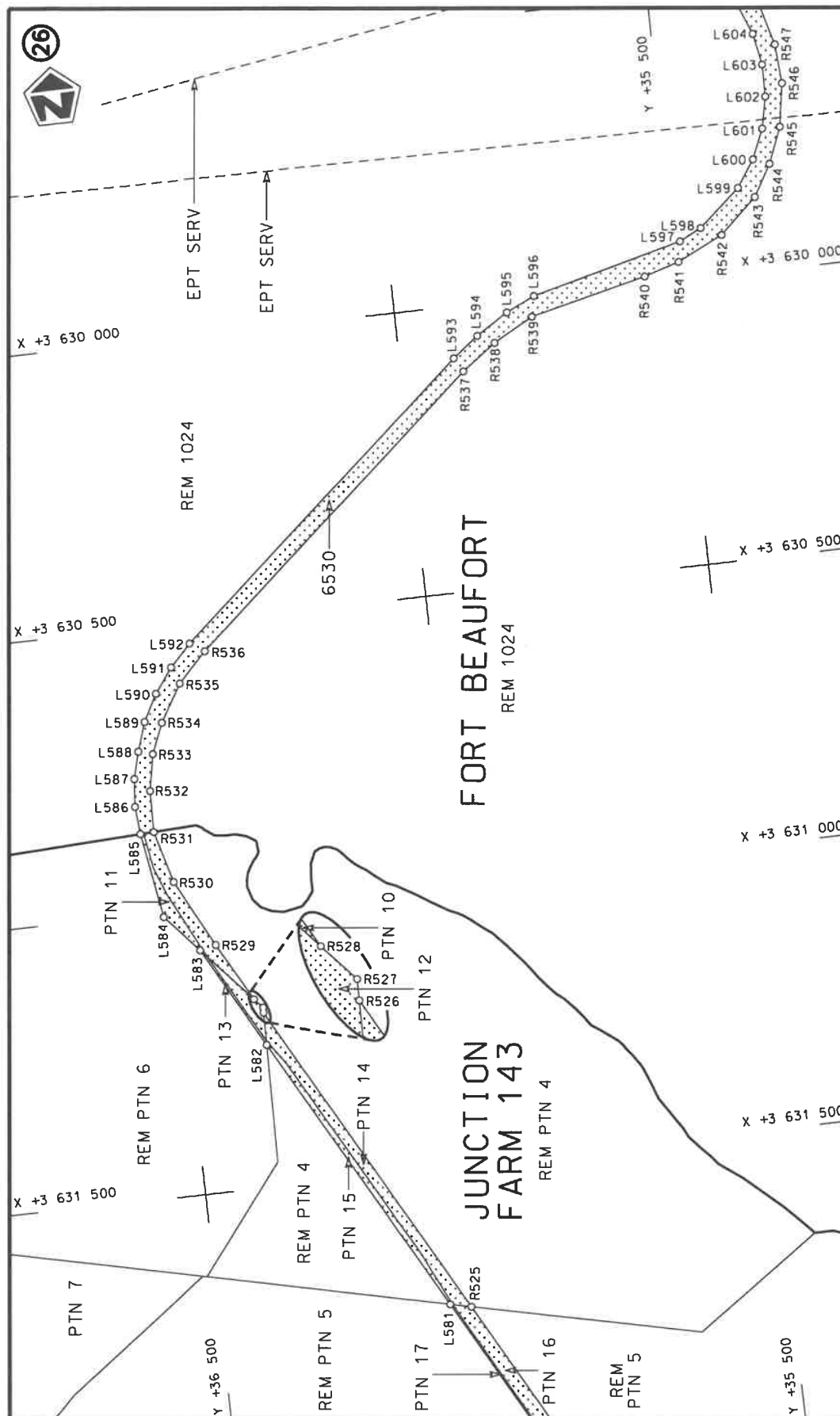


Die Suid Afrikaanse Nasionale Padagentskap MSB Bpk The South African National Roads Agency SOC Ltd	Die figuur getoon The figure shown	steldie podreserwe voor van 'n gedeelte represents the road reserve of a portion van Nasionale Roete R67 of National Route of National Route	2
Vel Sheet	16 of 32	Plan	P1230/22





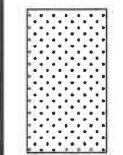
Die Suid Afrikaanse Nasionale Padagentskap MSB Bpk The South African National Roads Agency SOC Ltd	Die figuur getoon The figure shown	steldie podreserwe voor van 'n gedeelte represents the road reserve of a portion van Nasionale Roete R67 of National Route Section	2	Vel Sheet 18 of 32	Plan P1230/22
---	---------------------------------------	---	---	--------------------------	------------------



Vel
Sheet 19
of 32

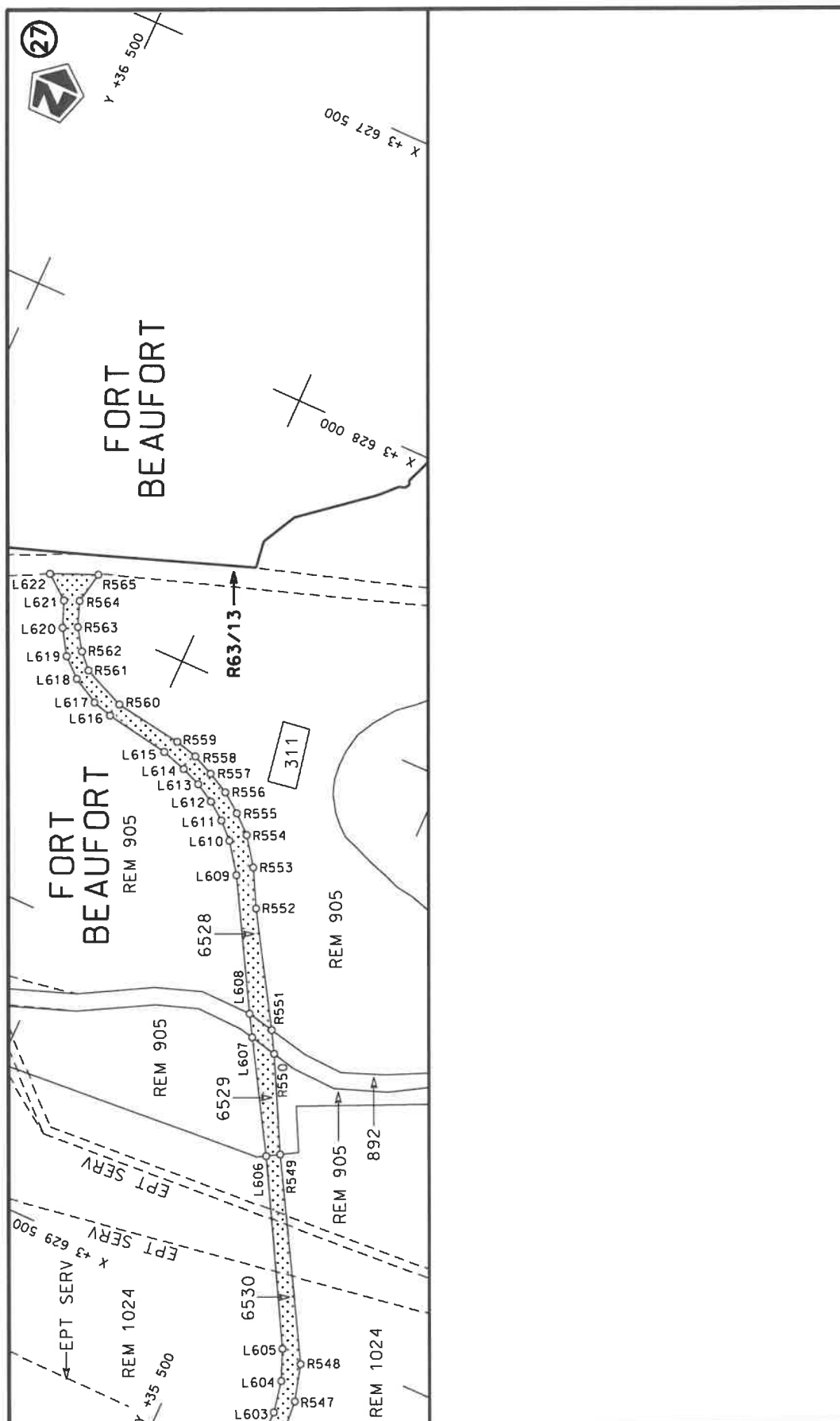
Plan
P1230/22

stel die padreserwe voor van 'n gedeelte
represents the road reserve of a portion
van Nasionale Roete R67
of National Route Section 2



Die figuur getoon
The figure shown

Die Suid Afrikaanse Nasionale Padagentskap MSB Bpk
The South African National Roads Agency SOC Ltd



Die Suid Afrikaanse Nasionale Padagentskap MSB Bpk The South African National Roads Agency SOC Ltd	Die figuur getoon The figure shown	stel die podreserwe voor van 'n gedeelte represents the road reserve of a portion van Nasionale Roete R67 of National Route	Vel Sheet 20 of 32 Plan P1230/22

PADRESERWE KOÖRDINATE / ROAD RESERVE CO-ORDINATES						
LINKERKANT/LEFT HAND SIDE				REGTERKANT/RIGHT HAND SIDE		
	Y	X	WG 27 ^o		Y	X
L1	37 716.56	3 684 058.07		R1	37 589.96	3 683 892.50
L2	37 694.69	3 684 001.12		R2	37 639.57	3 683 926.41
L3	37 696.22	3 683 976.24		R3	37 658.64	3 683 926.41
L4	37 715.39	3 683 926.98		R4	37 696.77	3 683 902.10
L5	37 764.58	3 683 863.93		R5	37 720.62	3 683 871.65
L6	37 795.18	3 683 840.32		R6	37 765.87	3 683 808.42
L7	37 851.26	3 683 850.33		R7	37 795.61	3 683 766.85
L8	37 871.84	3 683 860.19		R8	37 861.25	3 683 656.04
L9	37 884.01	3 683 837.31		R9	37 917.57	3 683 540.19
L10	37 817.10	3 683 802.22		R10	37 957.88	3 683 432.19
L11	37 834.09	3 683 763.98		R11	37 977.91	3 683 366.37
L12	37 914.89	3 683 619.83		R12	37 997.25	3 683 298.14
L13	37 971.14	3 683 488.67		R13	38 021.10	3 683 172.93
L14	38 004.89	3 683 388.67		R14	38 034.54	3 683 046.26
L15	38 025.77	3 683 309.18		R15	38 035.17	3 683 000.28
L16	38 047.52	3 683 194.73		R16	38 035.08	3 682 887.90
L17	38 061.13	3 683 093.36		R17	38 027.48	3 682 783.65
L18	38 068.18	3 683 022.66		R18	38 007.09	3 682 656.38
L19	38 081.27	3 683 013.68		R19	37 975.71	3 682 531.47
L20	38 084.83	3 682 977.83		R20	37 932.96	3 682 408.48
L21	38 071.71	3 682 972.71		R21	37 881.11	3 682 292.13
L22	38 062.46	3 682 853.38		R22	37 818.61	3 682 179.36
L23	38 052.62	3 682 750.17		R23	37 580.90	3 681 796.19
L24	38 036.97	3 682 651.44		R24	37 558.32	3 681 766.31
L25	38 005.03	3 682 523.72		R25	37 530.37	3 681 741.38
L26	37 962.35	3 682 400.02		R26	37 498.12	3 681 722.34
L27	37 915.35	3 682 294.05		R27	37 462.79	3 681 709.91
L28	37 863.60	3 682 199.42		R28	37 288.82	3 681 663.93
L29	37 844.24	3 682 165.11		R29	37 258.57	3 681 650.31
L30	37 715.36	3 681 960.14		R30	37 232.80	3 681 630.21
L31	37 633.19	3 681 825.57		R31	37 212.50	3 681 604.61
L32	37 592.68	3 681 763.11		R32	37 198.78	3 681 574.91
L33	37 575.44	3 681 742.48		R33	37 194.29	3 681 551.96
L34	37 550.31	3 681 720.85		R34	37 192.46	3 681 542.60
L35	37 518.70	3 681 700.20		R35	37 195.71	3 681 504.81
L36	37 477.92	3 681 684.24		R36	37 205.32	3 681 476.06
L37	37 309.24	3 681 640.51		R37	37 355.01	3 681 205.80
L38	37 278.02	3 681 628.87		R38	37 386.77	3 681 160.65
L39	37 258.92	3 681 616.39		R39	37 543.91	3 681 009.46
L40	37 238.52	3 681 591.21		R40	37 557.86	3 680 991.83
L41	37 226.23	3 681 560.44		R41	37 564.40	3 680 970.30
L42	37 224.18	3 681 541.77		R42	37 562.59	3 680 947.89
L43	37 223.07	3 681 531.64		R43	37 552.74	3 680 927.71
L44	37 226.14	3 681 501.32		R44	37 536.03	3 680 912.43
L45	37 231.63	3 681 487.27		R45	37 330.19	3 680 790.47
L46	37 384.94	3 681 211.29		R46	37 307.28	3 680 768.88
L47	37 412.83	3 681 170.07		R47	37 291.86	3 680 741.44
L48	37 501.29	3 681 091.69		R48	37 285.26	3 680 710.66
L49	37 574.04	3 681 020.71		R49	37 288.08	3 680 679.30
L50	37 587.87	3 680 999.95		R50	37 300.17	3 680 650.21
L51	37 596.91	3 680 976.55		R51	37 320.29	3 680 625.99
				Vel Sheet	21 Van of	32 P1230/22

PADRESERWE KOÖRDINATE / ROAD RESERVE CO-ORDINATES									
LINKERKANT/LEFT HAND SIDE					REGTERKANT/RIGHT HAND SIDE				
	Y	X	WG 27°			Y	X		
L52	37 595.52	3 680 932.32		R52	37 412.86	3 680 555.52			
L53	37 567.83	3 680 896.35		R53	37 454.06	3 680 510.55			
L54	37 543.62	3 680 880.59		R54	37 481.40	3 680 455.83			
L55	37 498.31	3 680 857.12		R55	37 491.52	3 680 414.54			
L56	37 402.34	3 680 785.68		R56	37 493.75	3 680 372.10			
L57	37 348.20	3 680 766.47		R57	37 487.97	3 680 329.98			
L58	37 328.09	3 680 746.20		R58	37 473.54	3 680 287.97			
L59	37 316.25	3 680 719.49		R59	37 456.06	3 680 255.51			
L60	37 317.26	3 680 688.73		R60	37 431.41	3 680 222.63			
L61	37 331.58	3 680 660.28		R61	37 417.09	3 680 203.54			
L62	37 346.80	3 680 644.53		R62	37 373.18	3 680 153.21			
L63	37 418.26	3 680 589.50		R63	37 305.19	3 680 093.37			
L64	37 476.91	3 680 531.43		R64	37 218.09	3 680 038.33			
L65	37 513.50	3 680 458.55		R65	37 151.89	3 680 009.92			
L66	37 524.97	3 680 387.15		R66	37 080.40	3 679 989.04			
L67	37 520.75	3 680 335.99		R67	36 808.33	3 679 935.99			
L68	37 529.18	3 680 331.67		R68	36 696.27	3 679 917.53			
L69	37 500.94	3 680 276.92		R69	36 658.31	3 679 915.10			
L70	37 471.60	3 680 224.31		R70	36 620.61	3 679 914.67			
L71	37 426.80	3 680 165.98		R71	36 565.47	3 679 917.28			
L72	37 406.97	3 680 147.36		R72	35 895.97	3 679 991.19			
L73	37 351.49	3 680 095.27		R73	35 819.38	3 679 981.06			
L74	37 308.35	3 680 057.39		R74	35 739.69	3 679 954.63			
L75	37 256.67	3 680 025.69		R75	35 692.55	3 679 928.12			
L76	37 244.18	3 680 017.97		R76	35 652.17	3 679 891.92			
L77	37 167.23	3 679 982.92		R77	35 639.82	3 679 876.33			
L78	37 088.82	3 679 959.50		R78	35 618.43	3 679 849.41			
L79	36 893.69	3 679 921.16		R79	35 566.09	3 679 748.30			
L80	36 694.24	3 679 886.73		R80	35 155.49	3 678 908.98			
L81	36 690.69	3 679 886.19		R81	35 126.94	3 678 862.76			
L82	36 659.32	3 679 881.41		R82	35 082.63	3 678 805.84			
L83	36 524.43	3 679 891.13		R83	35 031.59	3 678 754.74			
L84	36 105.64	3 679 938.72		R84	34 974.72	3 678 710.22			
L85	35 957.00	3 679 957.72		R85	34 104.11	3 678 138.93			
L86	35 845.50	3 679 959.46		R86	34 073.17	3 678 108.05			
L87	35 815.76	3 679 953.48		R87	34 048.79	3 678 071.99			
L88	35 769.75	3 679 940.65		R88	34 032.97	3 678 031.47			
L89	35 753.85	3 679 932.75		R89	34 026.49	3 677 988.46			
L90	35 710.12	3 679 905.85		R90	34 029.65	3 677 945.04			
L91	35 683.03	3 679 883.82		R91	34 042.37	3 677 903.42			
L92	35 657.17	3 679 855.94		R92	34 063.96	3 677 865.64			
L93	35 631.36	3 679 814.68		R93	34 092.52	3 677 832.57			
L94	35 427.86	3 679 394.09		R94	34 309.32	3 677 592.05			
L95	35 248.22	3 679 031.31		R95	34 327.26	3 677 557.31			
L96	35 190.69	3 678 914.85		R96	34 336.38	3 677 519.27			
L97	35 170.96	3 678 874.87		R97	34 336.13	3 677 480.17			
L98	35 145.03	3 678 837.96		R98	34 329.29	3 677 425.49			
L99	35 114.70	3 678 798.38		R99	34 333.86	3 677 365.03			
L100	35 083.80	3 678 764.83		R100	34 371.01	3 677 282.81			
L101	35 050.42	3 678 733.43		R101	34 402.25	3 677 250.04			
L102	35 015.45	3 678 704.43		R102	34 427.79	3 677 232.18			
					Vel Sheet 22 of 32		P1230/22		

PADRESERWE KOÖRDINATE / ROAD RESERVE CO-ORDINATES									
LINKERKANT/LEFT HAND SIDE					REGTERKANT/RIGHT HAND SIDE				
	Y	X	WG 27°			Y	X		
L103	34 131.78	3 678 123.40		R103	34 685.24	3 677 071.18			
L104	34 092.05	3 678 086.74		R104	34 718.55	3 677 040.71			
L105	34 068.29	3 678 046.85		R105	34 742.30	3 677 002.37			
L106	34 056.43	3 678 002.67		R106	34 756.75	3 676 932.81			
L107	34 056.80	3 677 957.44		R107	34 751.88	3 676 879.56			
L108	34 069.56	3 677 912.65		R108	34 736.76	3 676 826.02			
L109	34 093.93	3 677 873.55		R109	34 737.64	3 676 789.50			
L110	34 295.25	3 677 651.92		R110	34 751.33	3 676 717.85			
L111	34 326.09	3 677 616.55		R111	34 819.77	3 676 698.94			
L112	34 350.40	3 677 577.59		R112	34 962.26	3 676 636.74			
L113	34 365.68	3 677 528.42		R113	35 068.58	3 676 561.42			
L114	34 365.36	3 677 489.15		R114	35 113.66	3 676 521.98			
L115	34 357.65	3 677 414.22		R115	35 135.89	3 676 494.87			
L116	34 359.61	3 677 388.25		R116	35 195.37	3 676 435.13			
L117	34 369.48	3 677 349.66		R117	35 237.81	3 676 400.70			
L118	34 396.02	3 677 301.59		R118	35 244.70	3 676 387.87			
L119	34 421.66	3 677 273.23		R119	35 258.58	3 676 354.67			
L120	34 685.30	3 677 104.59		R120	35 252.60	3 676 309.70			
L121	34 757.86	3 677 051.23		R121	35 224.38	3 676 274.55			
L122	34 778.01	3 676 990.78		R122	35 183.66	3 676 250.73			
L123	34 785.86	3 676 929.10		R123	35 168.60	3 676 230.70			
L124	34 781.42	3 676 875.65		R124	35 160.49	3 676 213.37			
L125	34 786.07	3 676 862.06		R125	35 164.14	3 676 195.86			
L126	34 795.31	3 676 832.31		R126	35 171.09	3 676 178.99			
L127	34 780.81	3 676 781.67		R127	35 204.71	3 676 135.35			
L128	34 779.93	3 676 772.78		R128	35 276.22	3 676 094.88			
L129	34 780.81	3 676 763.62		R129	35 305.96	3 676 060.57			
L130	34 792.84	3 676 751.16		R130	35 321.08	3 676 018.15			
L131	34 804.30	3 676 747.62		R131	35 324.42	3 675 972.63			
L132	34 845.54	3 676 736.69		R132	35 318.76	3 675 928.08			
L133	34 976.99	3 676 674.63		R133	35 289.97	3 675 893.34			
L134	35 063.15	3 676 614.69		R134	35 247.36	3 675 877.41			
L135	35 071.44	3 676 610.39		R135	35 203.41	3 675 866.33			
L136	35 260.42	3 676 432.88		R136	35 159.12	3 675 857.76			
L137	35 293.80	3 676 385.02		R137	35 116.91	3 675 840.54			
L138	35 296.77	3 676 358.82		R138	35 082.07	3 675 812.74			
L139	35 297.47	3 676 329.85		R139	35 054.62	3 675 776.30			
L140	35 289.86	3 676 313.35		R140	35 036.33	3 675 735.84			
L141	35 284.64	3 676 301.57		R141	35 031.83	3 675 690.93			
L142	35 271.09	3 676 272.76		R142	35 039.09	3 675 645.50			
L143	35 244.11	3 676 247.61		R143	35 051.37	3 675 603.60			
L144	35 223.42	3 676 202.58		R144	35 078.00	3 675 568.16			
L145	35 259.72	3 676 175.01		R145	35 156.43	3 675 522.07			
L146	35 263.65	3 676 139.42		R146	35 223.01	3 675 494.69			
L147	35 298.62	3 676 110.60		R147	35 244.54	3 675 489.26			
L148	35 318.18	3 676 090.01		R148	35 317.09	3 675 454.34			
L149	35 328.51	3 676 075.36		R149	35 352.66	3 675 435.15			
L150	35 337.19	3 676 059.89		R150	35 430.78	3 675 386.59			
L151	35 346.83	3 676 035.36		R151	35 461.16	3 675 352.97			
L152	35 353.03	3 676 014.63		R152	35 471.70	3 675 338.09			
L153	35 356.61	3 675 988.40		R153	35 478.41	3 675 320.77			
					Vel Sheet	23	Van of	32	P1230/22

PADRESERWE KOÖRDINATE / ROAD RESERVE CO-ORDINATES									
LINKERKANT/LEFT HAND SIDE					REGTERKANT/RIGHT HAND SIDE				
	Y	X	WG	27°		Y	X		
L154	35 357.79	3 675 943.54			R154	35 481.92	3 675 304.51		
L155	35 345.72	3 675 899.52			R155	35 482.26	3 675 276.77		
L156	35 333.94	3 675 885.19			R156	35 473.93	3 675 207.66		
L157	35 314.11	3 675 868.17			R157	35 478.13	3 675 182.42		
L158	35 274.57	3 675 845.53			R158	35 476.75	3 675 150.80		
L159	35 135.90	3 675 817.33			R159	35 546.12	3 675 080.34		
L160	35 116.58	3 675 805.80			R160	35 517.44	3 675 045.32		
L161	35 083.91	3 675 776.89			R161	35 498.50	3 675 003.74		
L162	35 066.40	3 675 736.56			R162	35 487.89	3 674 973.71		
L163	35 062.74	3 675 684.75			R163	35 488.43	3 674 960.06		
L164	35 079.10	3 675 629.56			R164	35 495.65	3 674 936.91		
L165	35 089.95	3 675 605.86			R165	35 509.38	3 674 908.25		
L166	35 124.55	3 675 575.86			R166	35 530.65	3 674 890.66		
L167	35 192.29	3 675 552.61			R167	35 550.09	3 674 861.06		
L168	35 230.77	3 675 546.96			R168	35 569.15	3 674 771.65		
L169	35 349.94	3 675 500.75			R169	35 550.95	3 674 676.80		
L170	35 418.41	3 675 442.75			R170	35 565.98	3 674 657.09		
L171	35 468.02	3 675 418.83			R171	35 600.18	3 674 625.95		
L172	35 485.49	3 675 397.30			R172	35 630.81	3 674 591.46		
L173	35 507.91	3 675 380.79			R173	35 690.42	3 674 417.60		
L174	35 546.89	3 675 374.90			R174	35 700.48	3 674 372.52		
L175	35 592.67	3 675 357.97			R175	35 690.32	3 674 327.61		
L176	35 608.00	3 675 309.24			R176	35 662.33	3 674 292.06		
L177	35 614.88	3 675 262.36			R177	35 542.35	3 674 224.69		
L178	35 556.93	3 675 256.99			R178	35 474.47	3 674 184.25		
L179	35 543.12	3 675 224.01			R179	35 451.48	3 674 160.09		
L180	35 651.76	3 675 100.26			R180	35 421.85	3 674 083.04		
L181	35 644.07	3 675 097.12			R181	35 412.79	3 674 033.85		
L182	35 631.98	3 675 040.61			R182	35 413.96	3 673 982.53		
L183	35 622.35	3 675 014.07			R183	35 428.44	3 673 936.23		
L184	35 605.43	3 674 977.66			R184	35 444.24	3 673 908.24		
L185	35 608.47	3 674 911.64			R185	35 467.61	3 673 873.91		
L186	35 635.26	3 674 834.66			R186	35 493.35	3 673 846.38		
L187	35 641.68	3 674 790.76			R187	35 816.30	3 673 529.34		
L188	35 637.87	3 674 732.63			R188	35 838.08	3 673 511.23		
L189	35 646.47	3 674 699.13			R189	35 954.72	3 673 443.51		
L190	35 643.50	3 674 651.34			R190	35 984.44	3 673 422.52		
L191	35 694.57	3 674 535.68			R191	36 094.49	3 673 327.74		
L192	35 705.06	3 674 491.11			R192	36 129.34	3 673 297.53		
L193	35 719.66	3 674 468.35			R193	36 161.11	3 673 264.24		
L194	35 724.78	3 674 452.82			R194	36 185.10	3 673 225.86		
L195	35 727.43	3 674 427.03			R195	36 200.74	3 673 183.93		
L196	35 733.26	3 674 354.11			R196	36 210.34	3 673 139.73		
L197	35 729.55	3 674 290.34			R197	36 194.47	3 673 098.32		
L198	35 705.36	3 674 275.76			R198	36 169.98	3 673 072.36		
L199	35 532.94	3 674 189.66			R199	36 135.15	3 673 044.76		
L200	35 472.17	3 674 117.83			R200	36 039.41	3 673 007.70		
L201	35 450.69	3 674 077.80			R201	36 000.35	3 672 995.43		
L202	35 442.14	3 674 032.51			R202	35 959.85	3 672 989.37		
L203	35 444.12	3 673 985.97			R203	35 869.32	3 672 984.13		
L204	35 456.46	3 673 941.48			R204	35 797.80	3 672 973.19		
					<div> <div>Vel Sheet 24</div> <div>Van of 32</div> <div>P1230/22</div> </div>				

PADRESERWE KOÖRDINATE / ROAD RESERVE CO-ORDINATES									
LINKERKANT/LEFT HAND SIDE					REGTERKANT/RIGHT HAND SIDE				
	Y	X	WG 27°		Y	X			
L205	35 479.46	3 673 901.05		R205	35 714.31	3 672 949.78			
L206	35 502.50	3 673 875.08		R206	35 634.81	3 672 915.07			
L207	35 503.70	3 673 870.62		R207	35 560.83	3 672 869.77			
L208	35 516.28	3 673 855.30		R208	35 494.95	3 672 815.69			
L209	35 531.06	3 673 849.11		R209	35 434.95	3 672 751.02			
L210	35 534.81	3 673 845.97		R210	35 193.79	3 672 445.54			
L211	35 547.92	3 673 834.98		R211	35 127.15	3 672 357.69			
L212	35 546.69	3 673 830.11		R212	35 082.28	3 672 264.07			
L213	35 784.86	3 673 594.55		R213	35 043.93	3 672 168.00			
L214	35 863.78	3 673 530.87		R214	35 016.52	3 672 068.24			
L215	35 980.09	3 673 456.72		R215	35 001.24	3 671 965.97			
L216	36 108.47	3 673 355.22		R216	34 995.75	3 671 867.22			
L217	36 123.22	3 673 343.56		R217	35 001.01	3 671 774.74			
L218	36 165.86	3 673 304.61		R218	35 138.37	3 670 740.47			
L219	36 207.82	3 673 253.29		R219	35 206.37	3 670 228.57			
L220	36 245.12	3 673 191.45		R220	35 221.15	3 670 107.50			
L221	36 250.29	3 673 143.10		R221	35 231.76	3 669 985.98			
L222	36 243.08	3 673 107.73		R222	35 260.18	3 669 390.01			
L223	36 189.17	3 673 025.92		R223	35 271.75	3 669 210.55			
L224	36 070.89	3 672 982.48		R224	35 312.84	3 668 931.43			
L225	35 981.88	3 672 962.97		R225	35 416.44	3 668 495.75			
L226	35 863.64	3 672 952.48		R226	35 566.34	3 667 865.37			
L227	35 837.59	3 672 949.32		R227	35 667.04	3 667 428.54			
L228	35 786.63	3 672 939.35		R228	35 698.11	3 667 303.35			
L229	35 748.51	3 672 929.27		R229	35 727.66	3 667 224.03			
L230	35 698.97	3 672 911.70		R230	35 759.68	3 667 167.86			
L231	35 636.83	3 672 882.46		R231	35 769.97	3 667 142.49			
L232	35 545.82	3 672 818.89		R232	35 770.66	3 667 140.79			
L233	35 474.48	3 672 752.86		R233	35 844.82	3 667 053.21			
L234	35 193.74	3 672 401.26		R234	35 855.93	3 667 043.26			
L235	35 145.73	3 672 320.21		R235	35 976.94	3 666 931.66			
L236	35 063.34	3 672 136.29		R236	36 024.80	3 666 892.21			
L237	35 051.33	3 672 094.32		R237	36 052.06	3 666 867.83			
L238	35 042.04	3 672 054.68		R238	36 113.76	3 666 819.67			
L239	35 023.89	3 671 907.41		R239	36 183.02	3 666 751.36			
L240	35 022.66	3 671 850.99		R240	36 320.82	3 666 630.57			
L241	35 148.18	3 670 886.11		R241	36 347.42	3 666 604.04			
L242	35 170.05	3 670 743.03		R242	36 388.70	3 666 558.60			
L243	35 200.18	3 670 540.50		R243	36 430.00	3 666 505.57			
L244	35 206.16	3 670 454.58		R244	36 454.60	3 666 465.69			
L245	35 258.51	3 670 047.27		R245	36 473.23	3 666 430.60			
L246	35 295.07	3 669 307.24		R246	36 496.97	3 666 378.75			
L247	35 307.82	3 669 173.12		R247	36 516.46	3 666 324.89			
L248	35 322.61	3 669 061.91		R248	36 527.53	3 666 285.91			
L249	35 336.58	3 668 979.30		R249	36 541.07	3 666 218.94			
L250	35 445.97	3 668 512.64		R250	36 547.05	3 666 165.61			
L251	35 606.92	3 667 883.29		R251	36 548.91	3 666 148.95			
L252	35 610.57	3 667 812.52		R252	36 549.98	3 666 109.55			
L253	35 690.05	3 667 529.59		R253	36 548.95	3 666 070.64			
L254	35 673.57	3 667 531.48		R254	36 546.19	3 666 031.60			
L255	35 708.97	3 667 376.28		R255	36 533.85	3 665 938.77			
Vel Sheet					25	Van of	32	P1230/22	

PADRESERWE KOÖRDINATE / ROAD RESERVE CO-ORDINATES									
LINKERKANT/LEFT HAND SIDE					REGTERKANT/RIGHT HAND SIDE				
	Y	X	WG	27°		Y	X		
L256	35 740.90	3 667 294.30			R256	36 295.54	3 664 715.25		
L257	35 749.73	3 667 276.12			R257	36 283.84	3 664 671.10		
L258	35 744.58	3 667 272.87			R258	36 253.64	3 664 585.12		
L259	35 782.46	3 667 189.15			R259	36 215.28	3 664 502.14		
L260	35 788.98	3 667 178.82			R260	36 190.74	3 664 463.44		
L261	35 789.85	3 667 170.26			R261	36 051.99	3 664 281.23		
L262	35 799.39	3 667 159.28			R262	36 002.34	3 664 229.69		
L263	35 839.45	3 667 113.54			R263	35 852.56	3 664 137.89		
L264	35 895.40	3 667 077.92			R264	35 828.72	3 664 129.44		
L265	35 906.04	3 667 058.42			R265	35 749.79	3 664 107.89		
L266	35 919.20	3 667 046.57			R266	35 688.42	3 664 109.98		
L267	36 013.23	3 666 964.98			R267	35 604.18	3 664 038.69		
L268	36 083.95	3 666 898.36			R268	35 588.39	3 664 009.97		
L269	36 103.14	3 666 881.17			R269	35 584.48	3 663 986.08		
L270	36 350.46	3 666 650.56			R270	35 557.48	3 663 930.74		
L271	36 378.45	3 666 619.76			R271	35 545.91	3 663 887.01		
L272	36 448.92	3 666 531.53			R272	35 538.78	3 663 840.37		
L273	36 478.48	3 666 483.91			R273	35 541.12	3 663 793.09		
L274	36 498.22	3 666 446.97			R274	35 551.17	3 663 746.81		
L275	36 523.29	3 666 392.90			R275	35 568.57	3 663 702.81		
L276	36 547.00	3 666 327.16			R276	35 607.86	3 663 623.40		
L277	36 556.94	3 666 290.58			R277	35 659.30	3 663 385.82		
L278	36 578.63	3 666 163.54			R278	35 657.03	3 663 325.94		
L279	36 589.65	3 666 099.02			R279	35 645.39	3 663 267.72		
L280	36 576.28	3 666 031.76			R280	35 630.60	3 663 210.51		
L281	36 565.72	3 665 960.98			R281	35 610.12	3 663 155.10		
L282	36 319.72	3 664 699.16			R282	35 484.70	3 662 879.70		
L283	36 294.20	3 664 612.40			R283	35 461.11	3 662 811.69		
L284	36 258.80	3 664 529.23			R284	35 444.97	3 662 741.53		
L285	36 214.11	3 664 450.63			R285	35 432.76	3 662 670.76		
L286	36 160.65	3 664 377.72			R286	35 436.10	3 662 601.70		
L287	36 060.15	3 664 251.27			R287	35 443.54	3 662 536.18		
L288	36 022.39	3 664 211.05			R288	35 458.33	3 662 467.10		
L289	35 984.61	3 664 178.74			R289	35 966.64	3 660 760.95		
L290	35 933.71	3 664 145.87			R290	35 980.96	3 660 720.12		
L291	35 909.67	3 664 132.55			R291	35 994.13	3 660 664.14		
L292	35 876.82	3 664 116.99			R292	35 995.89	3 660 628.55		
L293	35 817.50	3 664 095.36			R293	35 994.79	3 660 528.29		
L294	35 753.20	3 664 076.99			R294	35 985.86	3 660 481.66		
L295	35 714.59	3 664 062.93			R295	35 969.03	3 660 431.84		
L296	35 638.21	3 664 007.83			R296	35 950.11	3 660 386.78		
L297	35 595.65	3 663 952.57			R297	35 921.62	3 660 338.79		
L298	35 576.71	3 663 910.77			R298	35 900.48	3 660 310.80		
L299	35 568.56	3 663 865.81			R299	35 860.13	3 660 266.69		
L300	35 565.32	3 663 819.87			R300	35 824.56	3 660 237.28		
L301	35 582.69	3 663 739.66			R301	35 764.76	3 660 198.04		
L302	35 639.39	3 663 614.89			R302	35 715.04	3 660 175.04		
L303	35 655.89	3 663 572.17			R303	35 565.98	3 660 126.63		
L304	35 661.24	3 663 552.07			R304	35 397.38	3 660 071.86		
L305	35 676.69	3 663 482.27			R305	35 363.59	3 660 065.14		
L306	35 687.35	3 663 381.55			R306	35 305.86	3 660 060.48		
					<div> <div>Vel Sheet 26</div> <div>Van of 32</div> <div>P1230/22</div> </div>				

PADRESERWE KOÖRDINATE / ROAD RESERVE CO-ORDINATES						
LINKERKANT/LEFT HAND SIDE				REGTERKANT/RIGHT HAND SIDE		
	Y	X	WG 27 ^o		Y	X
L307	35 681.98	3 663 304.09		R307	35 247.28	3 660 062.22
L308	35 668.79	3 663 235.00		R308	35 125.30	3 660 095.07
L309	35 496.87	3 662 833.64		R309	34 516.84	3 660 324.39
L310	35 484.27	3 662 793.79		R310	34 402.29	3 660 366.62
L311	35 465.71	3 662 700.66		R311	33 959.28	3 660 529.92
L312	35 462.97	3 662 663.56		R312	33 644.02	3 660 650.80
L313	35 462.98	3 662 609.91		R313	33 574.92	3 660 668.18
L314	35 472.24	3 662 519.01		R314	33 504.58	3 660 671.38
L315	35 885.06	3 661 127.97		R315	33 449.94	3 660 668.72
L316	36 013.33	3 660 709.68		R316	33 413.64	3 660 663.69
L317	36 029.08	3 660 608.33		R317	33 376.14	3 660 655.93
L318	36 032.57	3 660 504.53		R318	33 326.16	3 660 640.06
L319	35 977.11	3 660 378.33		R319	33 284.65	3 660 621.40
L320	35 959.96	3 660 346.35		R320	33 245.14	3 660 598.69
L321	35 944.81	3 660 323.05		R321	33 207.87	3 660 572.52
L322	35 922.12	3 660 292.86		R322	33 173.20	3 660 543.33
L323	35 904.93	3 660 272.85		R323	33 124.93	3 660 487.84
L324	35 865.05	3 660 231.36		R324	33 073.86	3 660 407.82
L325	35 815.36	3 660 193.87		R325	33 046.55	3 660 336.45
L326	35 767.25	3 660 165.87		R326	32 991.50	3 660 124.08
L327	35 719.78	3 660 145.13		R327	32 957.07	3 659 971.40
L328	35 575.65	3 660 097.92		R328	32 874.39	3 659 717.03
L329	35 417.62	3 660 046.15		R329	32 830.66	3 659 629.01
L330	35 352.19	3 660 033.72		R330	32 701.95	3 659 354.85
L331	35 285.66	3 660 030.62		R331	32 597.89	3 659 173.01
L332	35 219.37	3 660 037.01		R332	32 530.32	3 659 085.42
L333	35 154.65	3 660 052.60		R333	32 396.56	3 658 967.95
L334	33 633.82	3 660 622.55		R334	32 297.84	3 658 879.82
L335	33 568.67	3 660 638.41		R335	32 218.34	3 658 784.21
L336	33 501.52	3 660 644.23		R336	32 039.93	3 658 474.49
L337	33 434.31	3 660 639.84		R337	31 955.58	3 658 317.35
L338	33 368.51	3 660 625.26		R338	31 899.93	3 658 183.58
L339	33 305.69	3 660 600.87		R339	31 869.42	3 658 083.74
L340	33 247.33	3 660 567.26		R340	31 849.69	3 657 976.76
L341	33 194.71	3 660 525.14		R341	31 851.16	3 657 899.47
L342	33 149.13	3 660 475.54		R342	31 856.65	3 657 858.03
L343	33 111.57	3 660 419.60		R343	31 866.01	3 657 817.36
L344	33 082.92	3 660 358.60		R344	31 902.06	3 657 714.27
L345	33 069.33	3 660 316.78		R345	31 931.34	3 657 661.73
L346	32 955.95	3 659 854.58		R346	31 936.90	3 657 654.08
L347	32 938.94	3 659 792.87		R347	31 945.10	3 657 642.16
L348	32 915.83	3 659 733.18		R348	31 943.73	3 657 640.04
L349	32 859.28	3 659 615.34		R349	31 964.21	3 657 616.51
L350	32 719.61	3 659 324.28		R350	31 966.82	3 657 612.93
L351	32 622.91	3 659 156.32		R351	32 070.56	3 657 526.86
L352	32 552.30	3 659 064.80		R352	32 122.82	3 657 492.21
L353	32 419.12	3 658 947.07		R353	32 422.30	3 657 320.24
L354	32 318.73	3 658 858.34		R354	32 448.92	3 657 302.91
L355	32 272.90	3 658 807.09		R355	32 502.10	3 657 251.96
L356	32 230.49	3 658 745.48		R356	32 597.51	3 657 054.20
L357	32 008.46	3 658 360.20		R357	32 604.19	3 656 934.39
				Vel Sheet 27	Van of 32	P1230/22

PADRESERWE KOÖRDINATE / ROAD RESERVE CO-ORDINATES									
LINKERKANT/LEFT HAND SIDE					REGTERKANT/RIGHT HAND SIDE				
	Y	X	WG 27°			Y	X		
L358	31 962.60	3 658 266.08		R358	32 602.13	3 656 857.00			
L359	31 925.81	3 658 172.20		R359	32 606.73	3 656 749.55			
L360	31 894.41	3 658 057.76		R360	32 627.76	3 656 689.10			
L361	31 883.83	3 658 003.26		R361	32 660.12	3 656 633.11			
L362	31 880.32	3 657 919.02		R362	32 703.06	3 656 585.35			
L363	31 912.92	3 657 779.94		R363	32 754.67	3 656 545.84			
L364	31 928.73	3 657 751.14		R364	32 921.00	3 656 507.04			
L365	31 960.55	3 657 701.08		R365	32 973.72	3 656 485.01			
L366	31 970.11	3 657 687.26		R366	33 018.45	3 656 448.95			
L367	31 987.17	3 657 659.22		R367	33 052.42	3 656 401.67			
L368	31 993.25	3 657 649.65		R368	33 064.21	3 656 349.62			
L369	32 028.14	3 657 614.55		R369	33 057.91	3 656 310.10			
L370	32 076.51	3 657 560.57		R370	33 068.66	3 656 290.97			
L371	32 110.63	3 657 535.58		R371	33 068.59	3 656 233.64			
L372	32 406.06	3 657 360.88		R372	33 044.49	3 656 182.76			
L373	32 426.72	3 657 347.40		R373	33 005.85	3 656 137.24			
L374	32 463.89	3 657 323.01		R374	32 959.28	3 656 106.63			
L375	32 503.37	3 657 288.98		R375	32 762.90	3 656 029.73			
L376	32 548.46	3 657 232.93		R376	32 690.06	3 655 995.62			
L377	32 596.01	3 657 163.06		R377	32 626.18	3 655 950.25			
L378	32 612.71	3 657 106.47		R378	32 577.55	3 655 902.47			
L379	32 622.34	3 657 057.59		R379	32 533.64	3 655 844.05			
L380	32 628.43	3 656 986.80		R380	32 509.56	3 655 802.06			
L381	32 632.04	3 656 790.67		R381	32 458.04	3 655 674.89			
L382	32 638.34	3 656 739.34		R382	32 219.35	3 655 021.21			
L383	32 657.66	3 656 684.33		R383	32 191.99	3 654 928.25			
L384	32 689.30	3 656 636.56		R384	32 180.40	3 654 833.98			
L385	32 732.13	3 656 596.91		R385	32 179.06	3 654 788.77			
L386	32 782.39	3 656 568.03		R386	32 181.63	3 654 737.65			
L387	32 824.93	3 656 554.59		R387	32 217.68	3 654 499.74			
L388	32 891.30	3 656 539.86		R388	32 227.49	3 654 434.85			
L389	32 957.40	3 656 521.55		R389	32 224.04	3 654 356.77			
L390	33 013.32	3 656 487.99		R390	32 225.20	3 654 317.78			
L391	33 036.12	3 656 467.29		R391	32 235.25	3 654 268.70			
L392	33 074.84	3 656 413.27		R392	32 331.25	3 653 971.96			
L393	33 093.66	3 656 368.37		R393	32 330.25	3 653 875.22			
L394	33 103.66	3 656 320.66		R394	32 335.59	3 653 843.33			
L395	33 104.93	3 656 271.88		R395	32 353.59	3 653 777.30			
L396	33 097.02	3 656 224.53		R396	32 367.69	3 653 707.15			
L397	33 075.16	3 656 176.90		R397	32 373.41	3 653 635.81			
L398	33 043.87	3 656 135.60		R398	32 359.42	3 653 493.67			
L399	33 004.84	3 656 101.54		R399	32 175.65	3 652 905.11			
L400	32 959.64	3 656 076.21		R400	32 026.27	3 652 426.72			
L401	32 891.65	3 656 043.70		R401	32 002.19	3 652 334.52			
L402	32 775.08	3 655 999.65		R402	31 983.77	3 652 241.03			
L403	32 705.44	3 655 970.44		R403	31 971.06	3 652 146.64			
L404	32 645.89	3 655 927.38		R404	31 926.50	3 651 586.05			
L405	32 600.22	3 655 882.52		R405	31 926.41	3 651 492.30			
L406	32 558.75	3 655 827.83		R406	31 937.59	3 651 399.22			
L407	32 536.26	3 655 788.92		R407	31 959.92	3 651 308.20			
L408	32 520.86	3 655 755.88		R408	31 993.08	3 651 220.49			
					Vel Sheet	28	Van of	32	P1230/22

PADRESERWE KOÖRDINATE / ROAD RESERVE CO-ORDINATES									
LINKERKANT/LEFT HAND SIDE					REGTERKANT/RIGHT HAND SIDE				
	Y	X	WG	27°		Y	X		
L409	32 279.29	3 655 103.02			R409	32 036.50	3 651 137.41		
L410	32 273.79	3 655 088.14			R410	32 089.62	3 651 060.18		
L411	32 245.29	3 655 011.12			R411	32 151.67	3 650 989.92		
L412	32 220.35	3 654 922.52			R412	32 221.73	3 650 927.60		
L413	32 209.10	3 654 832.78			R413	32 381.37	3 650 815.39		
L414	32 210.65	3 654 738.66			R414	32 735.03	3 650 562.62		
L415	32 231.19	3 654 660.53			R415	33 111.99	3 650 293.19		
L416	32 234.60	3 654 636.84			R416	33 530.27	3 649 994.23		
L417	32 258.28	3 654 472.22			R417	33 606.03	3 649 934.47		
L418	32 259.42	3 654 441.77			R418	33 677.26	3 649 869.55		
L419	32 253.99	3 654 355.64			R419	33 761.89	3 649 781.02		
L420	32 255.53	3 654 321.51			R420	33 797.05	3 649 738.90		
L421	32 260.93	3 654 287.67			R421	33 888.81	3 649 616.83		
L422	32 275.25	3 654 245.98			R422	34 012.42	3 649 438.17		
L423	32 293.09	3 654 214.99			R423	34 079.16	3 649 360.77		
L424	32 327.50	3 654 128.18			R424	34 154.27	3 649 285.13		
L425	32 344.73	3 654 080.80			R425	34 721.08	3 648 765.39		
L426	32 354.80	3 654 031.33			R426	35 242.12	3 648 291.39		
L427	32 362.58	3 653 980.67			R427	35 342.23	3 648 191.15		
L428	32 364.89	3 653 933.00			R428	35 411.31	3 648 110.57		
L429	32 356.93	3 653 909.25			R429	35 473.81	3 648 025.00		
L430	32 366.88	3 653 836.32			R430	35 531.64	3 647 935.42		
L431	32 380.55	3 653 785.84			R431	35 589.76	3 647 826.46		
L432	32 395.55	3 653 722.09			R432	35 656.39	3 647 665.58		
L433	32 402.63	3 653 642.16			R433	35 988.84	3 646 600.58		
L434	32 396.59	3 653 534.37			R434	36 007.00	3 646 531.44		
L435	32 373.26	3 653 436.72			R435	36 016.34	3 646 442.74		
L436	32 186.40	3 652 844.13			R436	36 009.66	3 646 353.88		
L437	32 059.96	3 652 443.16			R437	35 993.57	3 646 259.32		
L438	32 017.70	3 652 279.26			R438	35 987.75	3 646 238.61		
L439	31 998.70	3 652 159.10			R439	35 904.46	3 646 082.41		
L440	31 954.42	3 651 598.03			R440	35 880.48	3 646 044.53		
L441	31 952.62	3 651 491.39			R441	35 220.71	3 645 372.11		
L442	31 966.33	3 651 388.74			R442	35 181.11	3 645 324.68		
L443	31 994.48	3 651 288.31			R443	35 146.77	3 645 273.32		
L444	32 036.65	3 651 190.90			R444	35 120.65	3 645 217.37		
L445	32 091.81	3 651 101.48			R445	35 103.54	3 645 157.92		
L446	32 158.52	3 651 020.97			R446	35 090.63	3 645 084.22		
L447	32 237.72	3 650 949.16			R447	35 090.18	3 644 999.61		
L448	32 396.90	3 650 835.79			R448	35 103.34	3 644 920.16		
L449	32 749.33	3 650 583.79			R449	35 210.00	3 644 642.16		
L450	33 121.80	3 650 321.36			R450	35 232.66	3 644 566.07		
L451	33 547.73	3 650 017.05			R451	35 235.43	3 644 552.60		
L452	33 637.91	3 649 944.30			R452	35 249.37	3 644 484.59		
L453	33 722.37	3 649 864.99			R453	35 257.10	3 644 401.75		
L454	33 800.65	3 649 779.60			R454	35 255.76	3 644 318.62		
L455	33 872.30	3 649 688.54			R455	35 245.40	3 644 236.09		
L456	34 031.67	3 649 460.97			R456	35 225.73	3 644 155.25		
L457	34 135.26	3 649 340.88			R457	34 472.65	3 641 893.15		
L458	34 167.16	3 649 306.93			R458	34 454.10	3 641 844.43		
L459	34 322.80	3 649 165.13			R459	34 431.17	3 641 761.93		
					<div> <div>Vel Sheet 29</div> <div>Van of 32</div> <div>P1230/22</div> </div>				

PADRESERWE KOÖRDINATE / ROAD RESERVE CO-ORDINATES									
LINKERKANT/LEFT HAND SIDE					REGTERKANT/RIGHT HAND SIDE				
	Y	X	WG 27 ^o		Y	X			
L460	34 590.33	3 648 925.77		R460	34 400.10	3 641 669.04			
L461	34 730.90	3 648 794.26		R461	34 373.37	3 641 515.37			
L462	35 314.99	3 648 262.56		R462	34 366.72	3 641 418.42			
L463	35 370.13	3 648 202.97		R463	34 367.46	3 641 331.29			
L464	35 451.11	3 648 104.60		R464	34 370.99	3 641 268.42			
L465	35 529.48	3 647 990.48		R465	34 380.68	3 641 191.69			
L466	35 591.28	3 647 882.39		R466	34 742.60	3 638 597.71			
L467	35 650.45	3 647 758.47		R467	34 770.04	3 638 400.93			
L468	35 697.53	3 647 626.88		R468	34 774.78	3 638 315.42			
L469	36 021.77	3 646 588.55		R469	34 770.59	3 638 287.13			
L470	36 035.78	3 646 524.70		R470	34 764.56	3 638 248.90			
L471	36 041.69	3 646 473.18		R471	34 741.39	3 638 181.14			
L472	36 040.97	3 646 363.83		R472	34 704.55	3 638 119.99			
L473	36 037.91	3 646 318.71		R473	34 652.14	3 638 061.36			
L474	36 022.40	3 646 261.08		R474	34 609.64	3 638 001.42			
L475	35 995.14	3 646 181.27		R475	34 581.14	3 637 932.38			
L476	35 973.68	3 646 131.74		R476	34 577.60	3 637 916.08			
L477	35 923.63	3 646 054.61		R477	34 572.33	3 637 891.83			
L478	35 862.98	3 645 987.43		R478	34 568.04	3 637 821.97			
L479	35 241.48	3 645 353.31		R479	34 600.56	3 637 622.25			
L480	35 204.61	3 645 307.17		R480	34 578.28	3 637 541.31			
L481	35 173.12	3 645 258.64		R481	34 531.76	3 637 454.31			
L482	35 148.28	3 645 206.41		R482	34 403.45	3 637 307.95			
L483	35 130.44	3 645 151.23		R483	34 389.28	3 637 285.13			
L484	35 120.15	3 645 095.76		R484	34 354.91	3 637 145.66			
L485	35 117.86	3 645 050.57		R485	34 319.43	3 636 967.16			
L486	35 118.01	3 645 014.12		R486	34 323.42	3 636 914.23			
L487	35 127.78	3 644 946.69		R487	34 353.03	3 636 813.58			
L488	35 142.25	3 644 896.40		R488	34 397.60	3 636 757.92			
L489	35 235.31	3 644 655.81		R489	34 386.91	3 636 714.03			
L490	35 264.01	3 644 564.30		R490	34 372.82	3 636 704.77			
L491	35 276.37	3 644 504.43		R491	34 393.20	3 636 632.63			
L492	35 283.98	3 644 444.07		R492	34 392.58	3 636 624.84			
L493	35 284.98	3 644 332.55		R493	34 390.11	3 636 593.43			
L494	35 278.31	3 644 250.79		R494	34 404.82	3 636 511.63			
L495	35 263.21	3 644 178.21		R495	34 471.22	3 636 437.73			
L496	34 481.04	3 641 832.86		R496	34 530.03	3 636 421.76			
L497	34 419.31	3 641 625.96		R497	34 626.22	3 636 426.69			
L498	34 403.99	3 641 530.48		R498	34 704.73	3 636 421.14			
L499	34 397.17	3 641 469.08		R499	34 724.73	3 636 384.53			
L500	34 392.17	3 641 362.73		R500	34 718.31	3 636 375.02			
L501	34 399.51	3 641 268.21		R501	34 778.16	3 636 310.11			
L502	34 418.86	3 641 122.48		R502	34 755.11	3 636 200.32			
L503	34 769.53	3 638 606.27		R503	34 686.71	3 635 969.85			
L504	34 801.73	3 638 374.94		R504	34 621.90	3 635 846.16			
L505	34 804.52	3 638 320.33		R505	34 608.26	3 635 775.22			
L506	34 796.72	3 638 264.31		R506	34 605.65	3 635 635.18			
L507	34 788.67	3 638 234.19		R507	34 616.05	3 635 515.02			
L508	34 782.16	3 638 209.81		R508	34 619.80	3 635 470.20			
L509	34 759.80	3 638 158.01		R509	34 643.39	3 635 391.24			
L510	34 730.17	3 638 109.99		R510	34 680.28	3 635 326.53			
Vel Sheet 30					Van of 32		P1230/22		

PADRESERWE KOÖRDINATE / ROAD RESERVE CO-ORDINATES							
LINKERKANT/LEFT HAND SIDE				REGTERKANT/RIGHT HAND SIDE			
	Y	X	WG 27 ^a		Y	X	
L511	34 693.83	3 638 066.77		R511	34 820.97	3 635 129.93	
L512	34 652.65	3 638 014.09		R512	34 877.76	3 635 039.20	
L513	34 629.67	3 637 972.46		R513	34 921.69	3 634 944.08	
L514	34 620.31	3 637 955.49		R514	34 942.37	3 634 887.18	
L515	34 604.11	3 637 899.64		R515	35 081.76	3 634 452.52	
L516	34 597.48	3 637 841.79		R516	35 094.57	3 634 398.81	
L517	34 600.77	3 637 783.73		R517	35 110.74	3 634 244.27	
L518	34 625.66	3 637 675.05		R518	35 112.72	3 634 225.37	
L519	34 628.65	3 637 621.84		R519	35 117.86	3 634 176.29	
L520	34 621.83	3 637 559.53		R520	35 166.91	3 633 510.49	
L521	34 602.22	3 637 504.84		R521	35 187.03	3 633 398.61	
L522	34 576.84	3 637 452.98		R522	35 222.13	3 633 290.35	
L523	34 546.96	3 637 419.85		R523	35 244.28	3 633 236.37	
L524	34 485.41	3 637 360.37		R524	35 456.99	3 632 848.47	
L525	34 452.74	3 637 321.00		R525	36 059.72	3 631 749.19	
L526	34 426.11	3 637 277.27		R526	36 363.51	3 631 195.13	
L527	34 406.13	3 637 230.17		R527	36 363.38	3 631 185.69	
L528	34 393.18	3 637 180.67		R528	36 377.53	3 631 169.61	
L529	34 368.33	3 637 047.83		R529	36 433.83	3 631 067.17	
L530	34 361.27	3 636 978.72		R530	36 495.38	3 630 949.01	
L531	34 372.78	3 636 921.73		R531	36 519.85	3 630 857.86	
L532	34 461.64	3 636 786.97		R532	36 518.44	3 630 785.55	
L533	34 481.52	3 636 734.76		R533	36 506.30	3 630 721.79	
L534	34 478.32	3 636 707.68		R534	36 484.55	3 630 668.80	
L535	34 469.74	3 636 697.60		R535	36 445.86	3 630 603.93	
L536	34 443.27	3 636 684.72		R536	36 395.40	3 630 552.35	
L537	34 425.16	3 636 615.40		R537	35 891.18	3 630 115.20	
L538	34 417.42	3 636 585.78		R538	35 831.38	3 630 071.67	
L539	34 419.42	3 636 557.40		R539	35 761.39	3 630 033.38	
L540	34 442.47	3 636 510.76		R540	35 557.12	3 629 985.76	
L541	34 470.80	3 636 482.54		R541	35 495.41	3 629 967.18	
L542	34 507.98	3 636 460.63		R542	35 415.30	3 629 928.57	
L543	34 560.82	3 636 449.31		R543	35 350.05	3 629 869.17	
L544	34 651.44	3 636 456.69		R544	35 317.96	3 629 814.17	
L545	34 695.51	3 636 451.84		R545	35 293.25	3 629 751.82	
L546	34 771.20	3 636 432.85		R546	35 281.26	3 629 676.19	
L547	34 795.34	3 636 401.46		R547	35 286.35	3 629 607.16	
L548	34 803.65	3 636 363.05		R548	35 303.92	3 629 543.32	
L549	34 815.48	3 636 327.20		R549	35 487.21	3 629 222.84	
L550	34 817.23	3 636 289.76		R550	35 569.34	3 629 066.26	
L551	34 808.46	3 636 253.04		R551	35 590.42	3 629 029.96	
L552	34 717.16	3 635 965.78		R552	35 702.65	3 628 847.13	
L553	34 693.16	3 635 911.93		R553	35 736.78	3 628 783.74	
L554	34 665.97	3 635 867.38		R554	35 770.56	3 628 736.66	
L555	34 650.09	3 635 831.88		R555	35 802.09	3 628 708.84	
L556	34 640.57	3 635 794.10		R556	35 835.57	3 628 683.76	
L557	34 637.70	3 635 755.23		R557	35 872.61	3 628 664.43	
L558	34 642.51	3 635 556.84		R558	35 909.59	3 628 647.90	
L559	34 643.55	3 635 514.57		R559	35 948.78	3 628 637.46	
L560	34 649.77	3 635 469.86		R560	36 066.63	3 628 619.14	
L561	34 661.64	3 635 426.25		R561	36 140.61	3 628 586.87	
				<div> <div>Vel Sheet</div> <div>31</div> <div>Van of</div> <div>32</div> </div> <div>P1230/22</div>			

PADRESERWE KOÖRDINATE / ROAD RESERVE CO-ORDINATES						
LINKERKANT/LEFT HAND SIDE				REGTERKANT/RIGHT HAND SIDE		
	Y	X	WG 27 ^o		Y	X
L562	34 678.12	3 635 384.29		R562	36 164.23	3 628 561.24
L563	34 720.57	3 635 318.98		R563	36 188.22	3 628 525.46
L564	34 850.38	3 635 136.41		R564	36 204.36	3 628 482.30
L565	34 891.54	3 635 071.03		R565	36 193.16	3 628 426.87
L566	34 927.35	3 635 002.61				
L567	34 957.55	3 634 931.54		LINKERKANT/LEFT HAND SIDE		
L568	35 103.65	3 634 468.00		L613	35 885.05	3 628 690.21
L569	35 119.00	3 634 410.89		L614	35 919.13	3 628 676.37
L570	35 131.77	3 634 353.12		L615	35 961.96	3 628 662.95
L571	35 138.82	3 634 289.03		L616	36 073.71	3 628 643.51
L572	35 141.14	3 634 249.46		L617	36 107.63	3 628 633.58
L573	35 142.42	3 634 227.55		L618	36 153.12	3 628 608.72
L574	35 155.15	3 634 010.32		L619	36 185.57	3 628 579.90
L575	35 190.93	3 633 513.88		L620	36 212.33	3 628 537.44
L576	35 209.23	3 633 431.28		L621	36 229.79	3 628 492.83
L577	35 231.62	3 633 349.86		L622	36 271.69	3 628 460.37
L578	35 261.44	3 633 270.91				
L579	35 298.53	3 633 195.08				
L580	35 487.55	3 632 850.43				
L581	36 096.10	3 631 740.88				
L582	36 364.32	3 631 251.83				
L583	36 462.18	3 631 073.41				
L584	36 519.52	3 631 008.24				
L585	36 543.48	3 630 858.96				
L586	36 547.53	3 630 810.35				
L587	36 543.22	3 630 761.66				
L588	36 530.89	3 630 714.65				
L589	36 514.32	3 630 663.96				
L590	36 489.17	3 630 617.06				
L591	36 457.70	3 630 574.10				
L592	36 420.50	3 630 536.03				
L593	35 905.42	3 630 090.60				
L594	35 860.13	3 630 056.08				
L595	35 804.12	3 630 021.06				
L596	35 753.78	3 629 997.62				
L597	35 488.79	3 629 931.56				
L598	35 450.56	3 629 912.25				
L599	35 377.92	3 629 849.96				
L600	35 346.19	3 629 803.29				
L601	35 324.13	3 629 751.33				
L602	35 312.68	3 629 696.11				
L603	35 312.21	3 629 639.65				
L604	35 322.70	3 629 584.21				
L605	35 343.80	3 629 531.89				
L606	35 508.75	3 629 235.45				
L607	35 616.46	3 629 055.81				
L608	35 637.79	3 629 019.96				
L609	35 758.30	3 628 808.04				
L610	35 794.35	3 628 758.15				
L611	35 821.57	3 628 731.65				
L612	35 851.98	3 628 708.88				

Printed by and obtainable from the Government Printer, Bosman Street, Private Bag X85, Pretoria, 0001
Contact Centre Tel: 012-748 6200. eMail: info.egazette@gpw.gov.za
Publications: Tel: (012) 748 6053, 748 6061, 748 6065