



Government Gazette Staatskoerant

REPUBLIC OF SOUTH AFRICA
REPUBLIEK VAN SUID AFRIKA

Vol. 702

11

December
Desember 2023

No. 49849



N.B. The Government Printing Works will not be held responsible for the quality of "Hard Copies" or "Electronic Files" submitted for publication purposes

ISSN 1682-5845



AIDS HELPLINE: 0800-0123-22 Prevention is the cure

IMPORTANT NOTICE:

THE GOVERNMENT PRINTING WORKS WILL NOT BE HELD RESPONSIBLE FOR ANY ERRORS THAT MIGHT OCCUR DUE TO THE SUBMISSION OF INCOMPLETE / INCORRECT / ILLEGIBLE COPY.

No FUTURE QUERIES WILL BE HANDLED IN CONNECTION WITH THE ABOVE.

Contents

<i>No.</i>		
	<i>Gazette No.</i>	<i>Page No.</i>

GOVERNMENT NOTICES • GOEWERMENTSKENNISGEWINGS**Transport, Department of/ Vervoer, Departement van**

4180	South African National Roads Agency Limited and the National Roads Act (7/1998): Declaration Amendment of National Road R410 Section 1: Amendment of Declaration No. 733 of 2016.....	49849	3
4180	Suid-Afrikaanse Nasionale Padagentskap Beperk en Nasionale Paaie Wet (7/1998): Verklaring Wysiging van Nasionale Pad R410 Seksie 1: Wysiging van Verklaring No. 733 van 2016	49849	4

GOVERNMENT NOTICES • GOEWERMENTSKENNISGEWINGS

DEPARTMENT OF TRANSPORT

NO. 4180

11 December 2023

**THE SOUTH AFRICAN NATIONAL ROADS
AGENCY SOC LIMITED**Registration No: 1998/009584/30

DECLARATION AMENDMENT OF NATIONAL ROAD R410 SECTION 1

AMENDMENT OF DECLARATION No. 733 OF 2016.

By virtue of section 40(1)(b) of the South African National Roads Agency Limited and the National Roads Act 1998 (Act No. 7 of 1998), I hereby amend Declaration No. 733 of 2016 by substituting paragraph F of the Schedule, being the descriptive declaration of the route from its junction with National Road R392 up to Lady Frere, with the accompanying sheets 1 to 13 of Plan No. P1228/22.

(National Road R410 Section 1: R392 Junction – Lady Frere)
MINISTER OF TRANSPORT

DEPARTEMENT VAN VERVOER

NO. 4180

11 Desember 2023

**DIE SUID-AFRIKAANSE NASIONALE
PADAGENTSKAP MSB BEPERK**

Registrasie No: 1998/009584/30

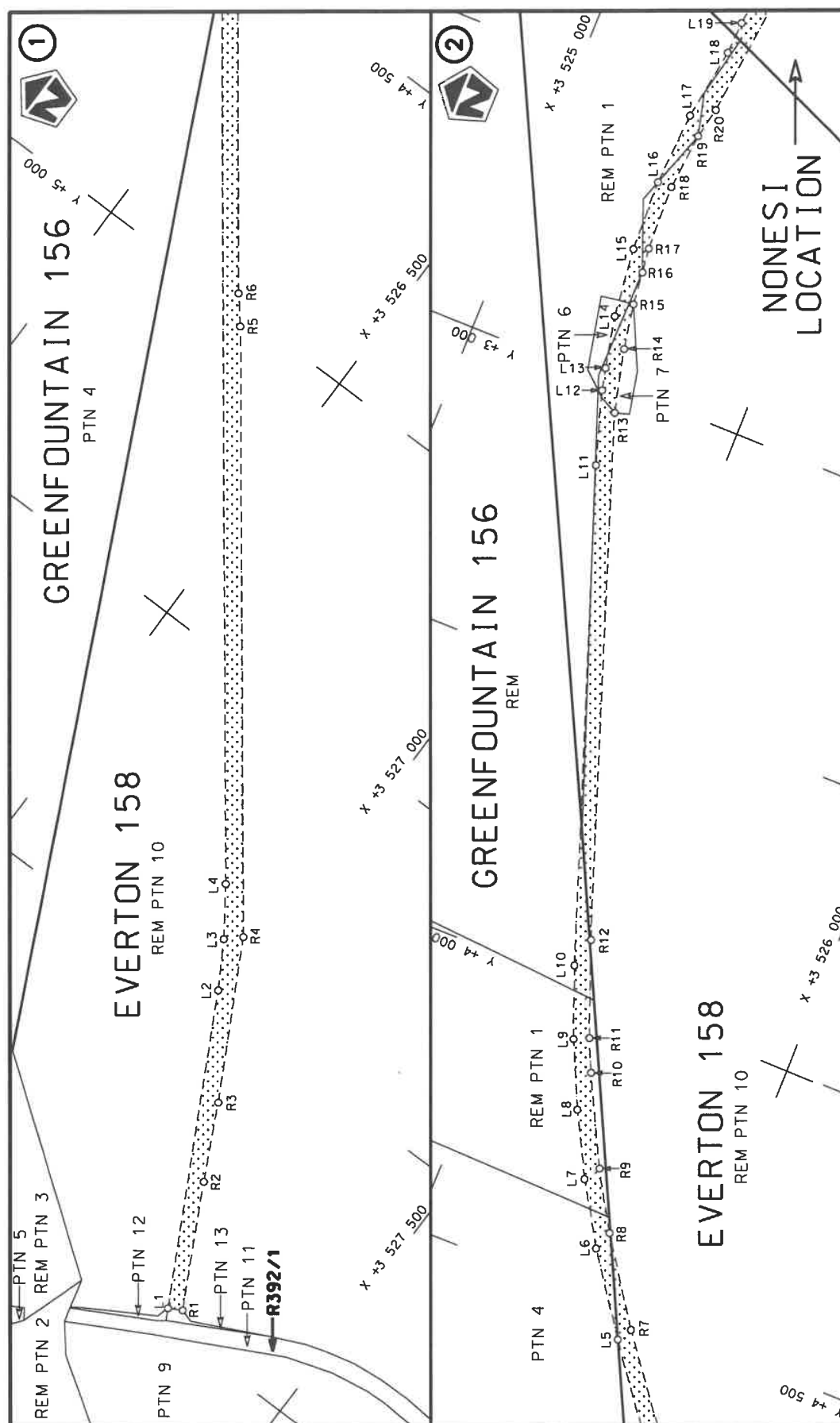
VERKLARING WYSIGING VAN NASIONALE PAD R410 SEKSIE 1


WYSIGING VAN VERKLARING No. 733 VAN 2016.

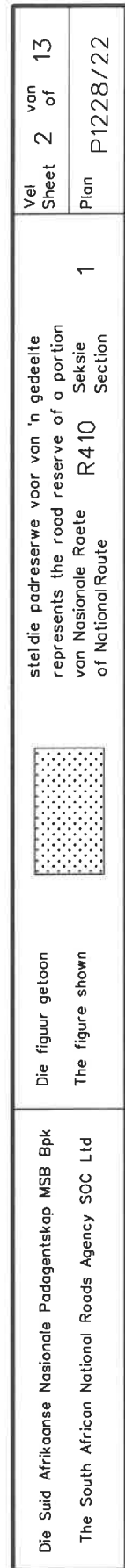
Kragtens Artikel 40(1)(b) van die Suid-Afrikaanse Nasionale Padagentskap Beperk en Nasionale Paaie Wet 1998 (Wet No. 7 van 1998), wysig ek hiermee Verklaring No. 733 van 2016 deur paragraaf F van die Skedule te vervang, synde die gedeelte van die beskrywende verklaring van die pad vanaf die aansluiting met Nasionale Pad R392 tot by Lady Frere, met bygaande velle 1 tot 13 van Plan No. P1228/22.

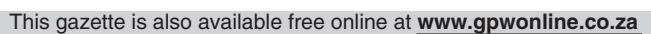
(Nasionale Pad R410 Seksie 1: R392 Aansluiting – Lady Frere)



MINISTER VAN VERVOER

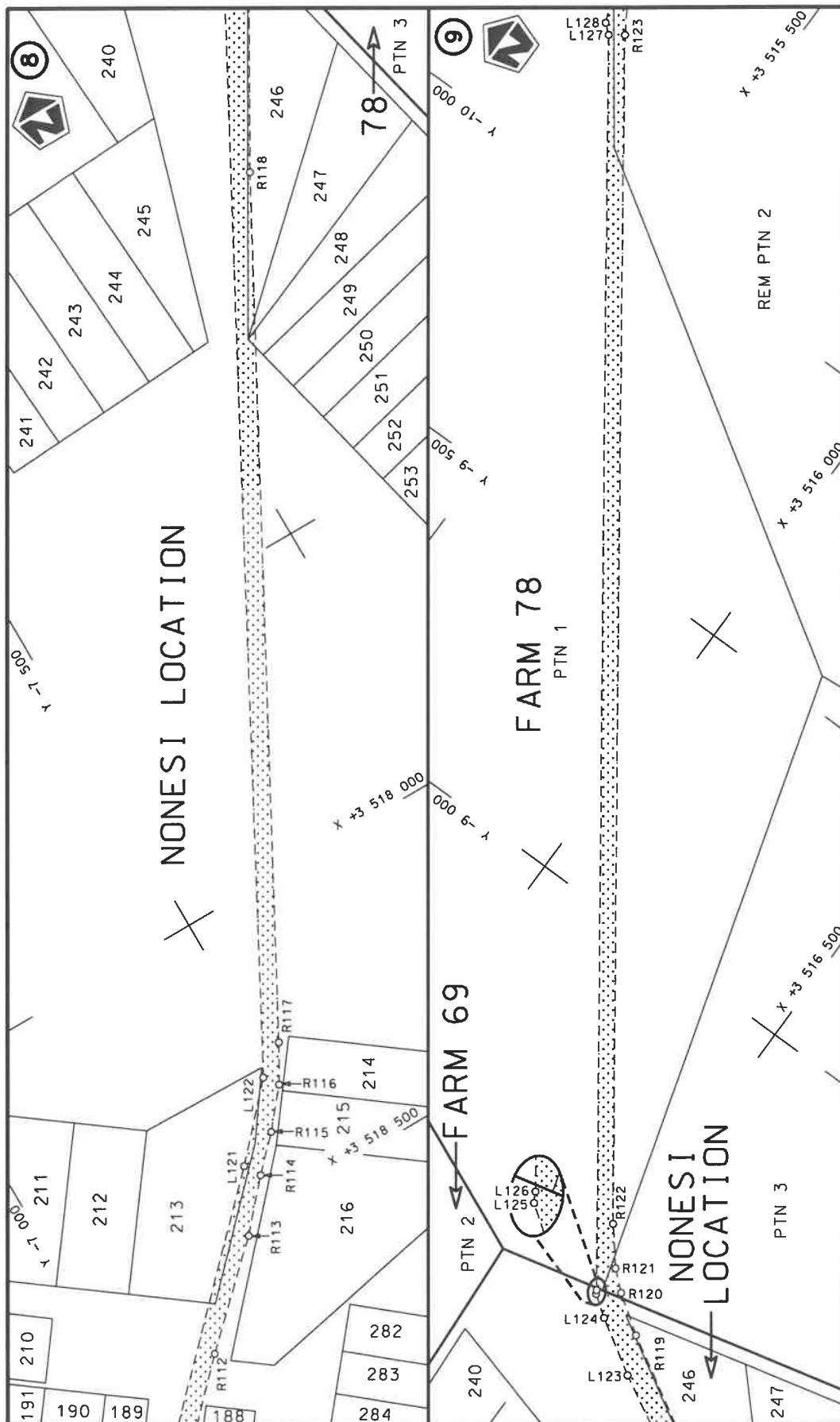


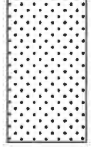
Die Suid Afrikaanse Nasionale Podagentskap MSB Bpk	Die figuur getoon		stel die padreserwe voor van 'n gedeelte represents the road reserve of a portion	Vel Sheet	1 of	13
The South African National Roads Agency SOC Ltd	The figure shown		van Nasionale Roete of National Route	R410 Seksie Section	Plan	

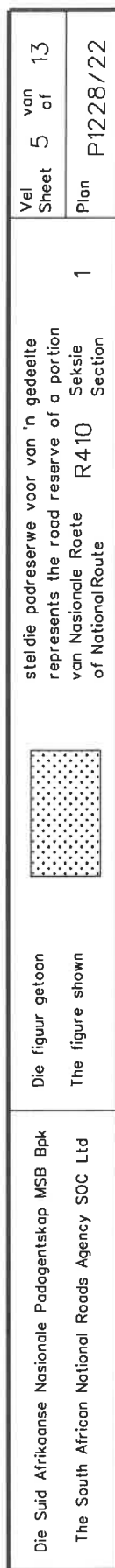


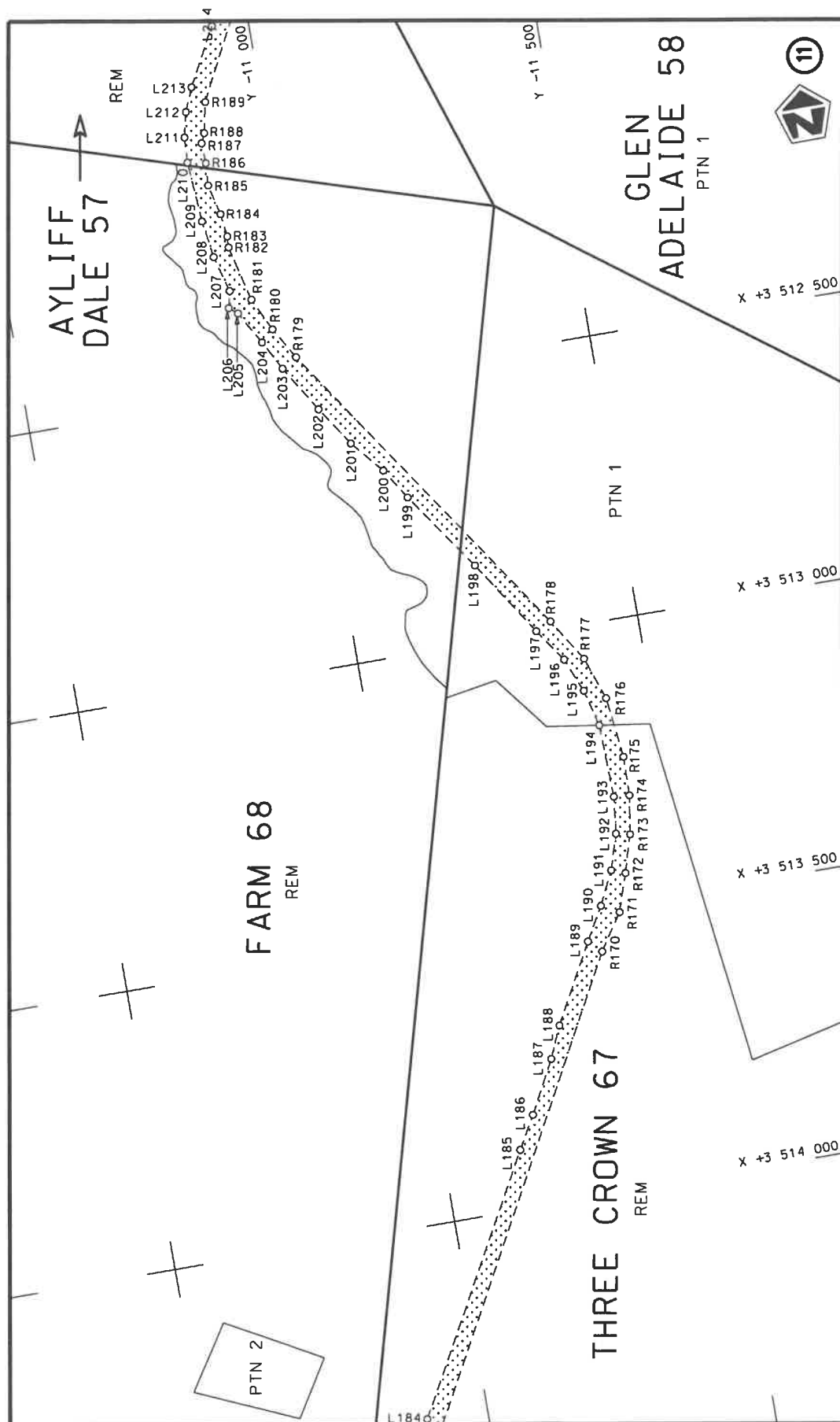


Die Suid Afrikaanse Nasionale Padagentskap MSB Bpk	Die figuur getoon		stel die padreserwe voor van 'n gedeelte represents the road reserve of a portion	Vel Sheet	3 of	13
The South African National Roads Agency SOC Ltd	The figure shown		van Nasionale Roete of National Route	Plan	P1228/22	

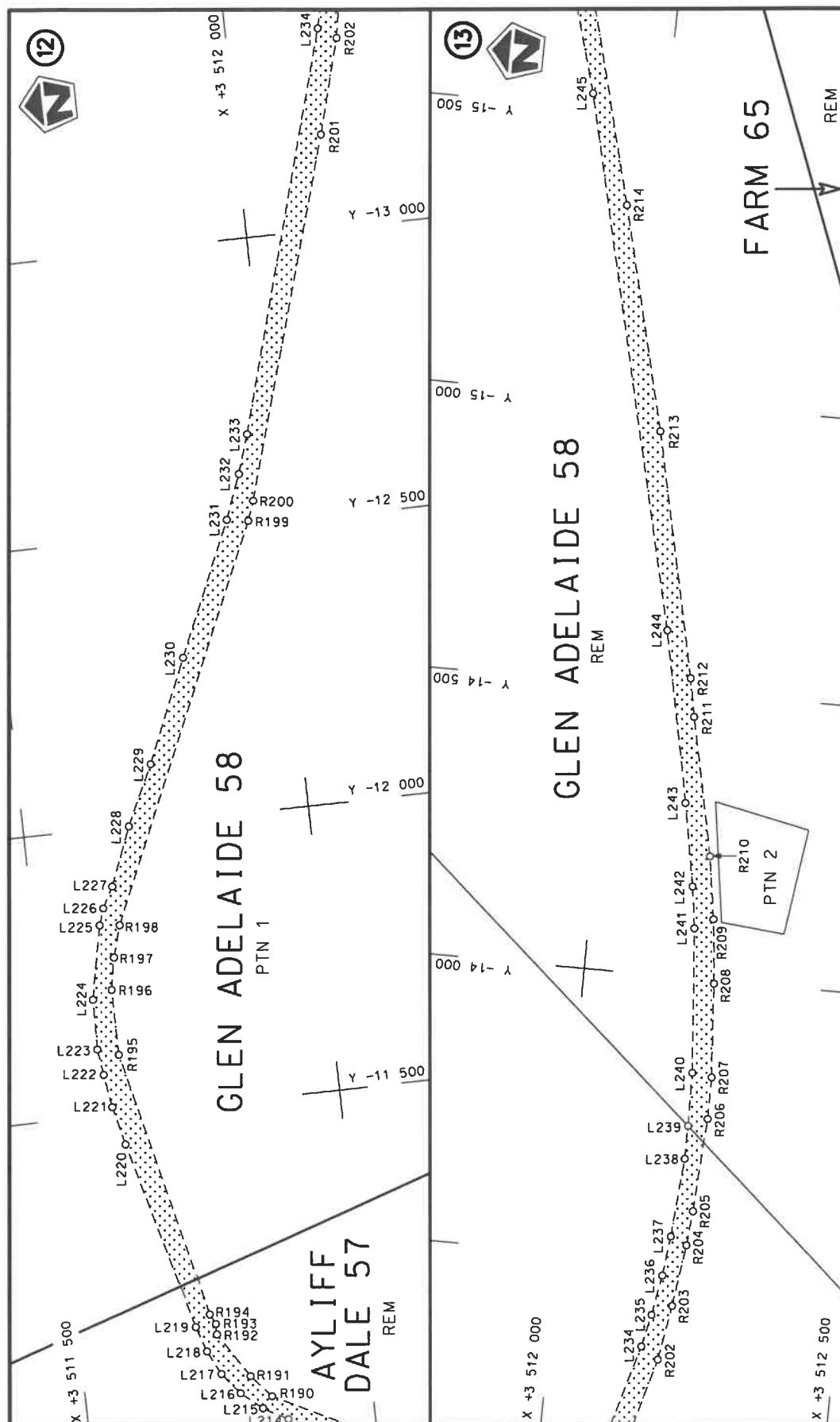


Die Suid Afrikaanse Nasionale Padagentskap MSB Bpk The South African National Roads Agency SOC Ltd	Die figuur getoon The figure shown		stel die padreserwe voor van 'n gedeelte represents the road reserve of a portion van Nasionale Roete R410 of National Route	1 Seksie Section	Vel Sheet 4 of 13 Plan P1228/22
---	---------------------------------------	---	---	------------------------	---





Die Suid Afrikaanse Nasionale Padagentskap MSB Bpk The South African National Roads Agency SOC Ltd	Die figuur getoon The figure shown	stel die padreserwe voor van 'n gedeelte represents the road reserve of a portion van Nasionale Roete R410 Sektie of National Route Section	Vel Sheet 6 van of 13 Plan P1228/22
---	---------------------------------------	--	--



steldie padreserwe voor van 'n gedeelte
represents the road reserve of a portion
van Nasionale Roete R410 Sektie
of National Route of Section

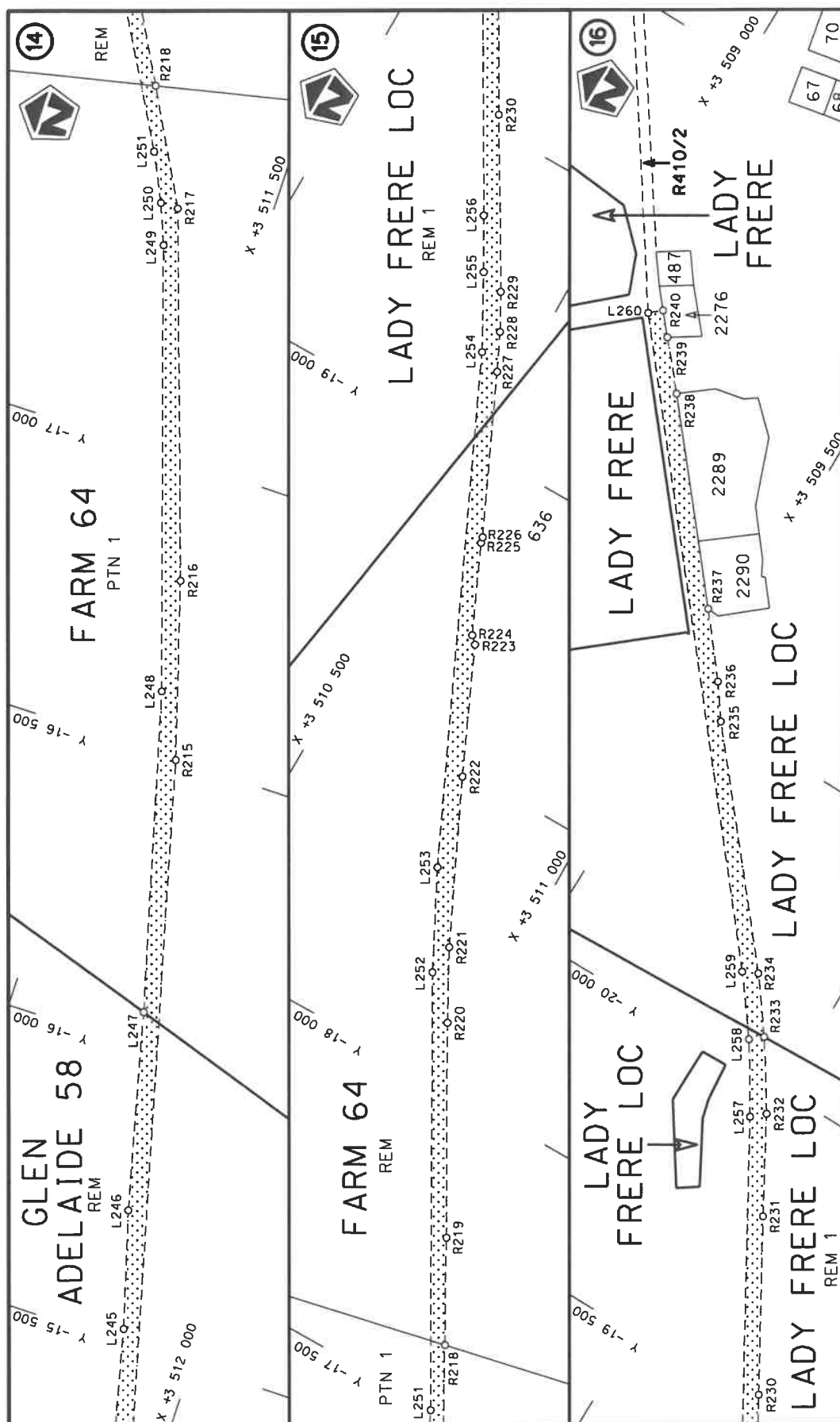



Die figuur getoon
The figure shown

Die Suid Afrikaanse Nasionale Padagentskap MSB Bpk
The South African National Roads Agency SOC Ltd

Vel
Sheet 7 of 13

Plan
P1228/22



Die Suid Afrikaanse Nasionale Padagentskap MSB Bpk The South African National Roads Agency SOC Ltd	Die figuur getoon The figure shown		steldie padreserwe voor van 'n gedeelte represents the road reserve of a portion van Nasionale Roete R410 of National Route	1	Plan P1228/22
Vel Sheet 8 of 13	Section				

PADRESERWE KOÖRDINATE / ROAD RESERVE CO-ORDINATES						
LINKERKANT/LEFT HAND SIDE				REGTERKANT/RIGHT HAND SIDE		
	Y	X	WG 27°		Y	X
L1	6 473.27	3 527 235.16		R1	6 460.81	3 527 257.85
L2	5 974.00	3 526 970.13		R2	6 256.85	3 527 151.54
L3	5 896.62	3 526 923.84		R3	6 130.90	3 527 088.45
L4	5 817.37	3 526 868.33		R4	5 873.32	3 526 948.74
L5	4 548.13	3 525 901.57		R5	5 023.54	3 526 301.60
L6	4 412.68	3 525 806.29		R6	4 979.16	3 526 264.22
L7	4 307.42	3 525 741.90		R7	4 522.14	3 525 916.45
L8	4 199.54	3 525 684.48		R8	4 380.48	3 525 818.27
L9	4 087.28	3 525 631.98		R9	4 282.28	3 525 759.47
L10	3 967.30	3 525 585.13		R10	4 132.13	3 525 682.95
L11	3 142.72	3 525 291.38		R11	4 076.74	3 525 657.42
L12	3 017.18	3 525 252.05		R12	3 916.34	3 525 595.56
L13	2 978.96	3 525 242.95		R13	3 045.42	3 525 287.29
L14	2 888.19	3 525 224.06		R14	2 936.07	3 525 260.53
L15	2 767.55	3 525 209.84		R15	2 857.27	3 525 246.31
L16	2 643.77	3 525 205.28		R16	2 800.09	3 525 239.78
L17	2 514.71	3 525 213.64		R17	2 757.29	3 525 234.27
L18	2 388.46	3 525 233.20		R18	2 642.39	3 525 230.62
L19	2 331.43	3 525 236.39		R19	2 543.13	3 525 240.03
L20	2 272.15	3 525 243.05		R20	2 488.68	3 525 251.88
L21	2 200.51	3 525 241.12		R21	2 270.15	3 525 277.44
L22	2 138.90	3 525 227.45		R22	2 170.44	3 525 266.99
L23	1 919.76	3 525 140.73		R23	2 132.42	3 525 265.15
L24	1 677.43	3 525 036.96		R24	2 110.49	3 525 251.46
L25	1 631.81	3 525 008.46		R25	2 054.62	3 525 225.17
L26	1 589.52	3 524 946.74		R26	1 984.91	3 525 196.77
L27	1 578.97	3 524 870.41		R27	1 979.52	3 525 196.57
L28	1 580.13	3 524 825.41		R28	1 712.62	3 525 087.18
L29	1 610.96	3 524 756.67		R29	1 652.08	3 525 059.40
L30	1 510.90	3 524 684.12		R30	1 630.38	3 525 046.52
L31	1 476.64	3 524 647.53		R31	1 581.11	3 525 012.36
L32	1 413.58	3 524 485.48		R32	1 531.07	3 524 887.88
L33	1 375.60	3 524 400.24		R33	1 516.30	3 524 838.63
L34	1 306.59	3 524 365.97		R34	1 529.27	3 524 793.54
L35	1 062.19	3 524 326.04		R35	1 519.23	3 524 743.40
L36	1 044.95	3 524 315.61		R36	1 459.66	3 524 699.45
L37	1 022.29	3 524 293.80		R37	1 443.88	3 524 686.50
L38	1 005.73	3 524 279.11		R38	1 426.04	3 524 666.92
L39	998.00	3 524 258.38		R39	1 414.14	3 524 643.32
L40	1 000.89	3 524 236.44		R40	1 408.99	3 524 617.39
L41	1 013.73	3 524 218.41		R41	1 406.27	3 524 586.23
L42	1 026.40	3 524 205.11		R42	1 400.98	3 524 559.95
L43	1 036.48	3 524 189.77		R43	1 391.07	3 524 534.89
L44	1 040.31	3 524 160.69		R44	1 362.12	3 524 473.92
L45	1 039.52	3 524 131.36		R45	1 352.10	3 524 455.50
L46	1 034.16	3 524 102.53		R46	1 336.58	3 524 436.13
L47	1 021.28	3 524 075.79		R47	1 316.25	3 524 421.91
L48	1 018.14	3 524 040.21		R48	1 292.74	3 524 413.97
L49	1 005.95	3 524 027.73		R49	1 176.94	3 524 392.54
L50	994.64	3 524 023.12		R50	1 107.35	3 524 376.33
L51	982.39	3 523 998.24		R51	1 054.46	3 524 354.55
				Vel Sheet 9	Van of 13	P1228/22

PADRESERWE KOÖRDINATE / ROAD RESERVE CO-ORDINATES									
LINKERKANT/LEFT HAND SIDE					REGTERKANT/RIGHT HAND SIDE				
	Y	X	WG 27 ^a			Y	X		
L52	982.35	3 523	980.08	R52	1	006.14	3 524	323.92	
L53	972.53	3 523	963.83	R53		989.51	3 524	307.45	
L54	971.58	3 523	922.85	R54		977.23	3 524	287.70	
L55	975.02	3 523	866.85	R55		969.68	3 524	264.80	
L56	932.97	3 523	641.45	R56		969.09	3 524	240.70	
L57	924.20	3 523	612.35	R57		975.51	3 524	217.45	
L58	894.41	3 523	555.28	R58		992.67	3 524	180.64	
L59	867.62	3 523	520.15	R59	1	000.36	3 524	158.60	
L60	851.08	3 523	479.38	R60	1	002.10	3 524	135.40	
L61	843.08	3 523	449.94	R61		997.16	3 524	112.65	
L62	838.78	3 523	415.07	R62		987.85	3 524	091.29	
L63	835.44	3 523	339.20	R63		974.99	3 524	067.25	
L64	828.80	3 523	316.13	R64		945.05	3 524	025.98	
L65	816.37	3 523	292.21	R65		927.26	3 523	930.17	
L66	803.90	3 523	273.54	R66		925.86	3 523	905.28	
L67	787.03	3 523	258.23	R67		940.19	3 523	822.77	
L68	770.22	3 523	247.01	R68		911.30	3 523	675.24	
L69	741.98	3 523	234.11	R69		900.38	3 523	636.24	
L70	654.58	3 523	213.37	R70		857.54	3 523	596.89	
L71	596.49	3 523	196.94	R71		847.87	3 523	568.51	
L72	564.57	3 523	178.77	R72		806.95	3 523	478.35	
L73	513.10	3 523	100.92	R73		765.18	3 523	315.95	
L74	497.92	3 523	087.90	R74		748.85	3 523	300.79	
L75	402.52	3 523	001.66	R75		726.13	3 523	290.04	
L76	301.80	3 522	896.83	R76		601.75	3 523	251.37	
L77	239.41	3 522	826.32	R77		490.71	3 523	187.75	
L78	199.50	3 522	784.21	R78		388.45	3 523	053.52	
L79	174.84	3 522	759.88	R79		320.79	3 522	969.41	
L80	119.86	3 522	721.70	R80		181.55	3 522	817.35	
L81	89.90	3 522	702.97	R81		104.84	3 522	754.12	
L82	52.70	3 522	687.07	R82		23.76	3 522	718.26	
L83	31.63	3 522	687.75	R83		-31.34	3 522	704.75	
L84	15.26	3 522	682.72	R84		-46.45	3 522	703.66	
L85	-40.89	3 522	672.07	R85		-305.92	3 522	691.88	
L86	-330.95	3 522	648.74	R86		-731.19	3 522	677.14	
L87	-792.52	3 522	643.76	R87		-813.28	3 522	671.47	
L88	-906.78	3 522	634.33	R88		-910.19	3 522	660.05	
L89	-1 020.43	3 522	614.06	R89	-3	582.11	3 522	231.85	
L90	-1 076.62	3 522	605.97	R90	-3	730.13	3 522	173.41	
L91	-2 452.77	3 522	380.87	R91	-3	805.47	3 522	133.05	
L92	-3 257.62	3 522	245.04	R92	-3	869.00	3 522	093.87	
L93	-3 530.47	3 522	206.21	R93	-4	556.36	3 521	605.61	
L94	-3 583.60	3 522	186.15	R94	-4	624.34	3 521	561.38	
L95	-3 619.76	3 522	177.91	R95	-4	699.16	3 521	495.22	
L96	-3 701.97	3 522	145.18	R96	-4	752.80	3 521	436.78	
L97	-3 781.85	3 522	111.66	R97	-4	870.75	3 521	293.57	
L98	-3 850.22	3 522	070.08	R98	-4	910.49	3 521	248.41	
L99	-3 982.61	3 521	975.43	R99	-5	027.53	3 521	129.84	
L100	-3 989.82	3 521	941.25	R100	-5	119.42	3 521	041.39	
L101	-4 030.44	3 521	942.11	R101	-5	156.15	3 520	999.92	
L102	-4 614.20	3 521	525.40	R102	-5	740.19	3 520	413.84	
					Vel Sheet 10		Van of 13		P1228/22

PADRESERWE KOÖRDINATE / ROAD RESERVE CO-ORDINATES									
LINKERKANT/LEFT HAND SIDE					REGTERKANT/RIGHT HAND SIDE				
	Y	X	WG 27°			Y	X		
L103	-4 647.78	3 521 501.15		R103	-5 793.13	3 520 354.26			
L104	-4 678.04	3 521 473.29		R104	-5 842.40	3 520 291.60			
L105	-4 736.69	3 521 402.65		R105	-6 239.48	3 519 762.52			
L106	-4 872.38	3 521 229.96		R106	-6 292.86	3 519 694.40			
L107	-4 948.01	3 521 159.36		R107	-6 343.22	3 519 627.55			
L108	-5 013.96	3 521 078.51		R108	-6 505.95	3 519 407.84			
L109	-5 070.71	3 521 023.82		R109	-6 684.82	3 519 175.57			
L110	-5 107.22	3 520 992.79		R110	-6 713.46	3 519 132.04			
L111	-5 188.07	3 520 912.28		R111	-6 763.18	3 519 070.60			
L112	-5 250.40	3 520 862.08		R112	-7 158.76	3 518 670.45			
L113	-5 721.58	3 520 388.57		R113	-7 314.76	3 518 522.55			
L114	-5 774.74	3 520 329.53		R114	-7 386.59	3 518 441.65			
L115	-6 411.84	3 519 483.64		R115	-7 441.09	3 518 385.82			
L116	-6 457.01	3 519 411.76		R116	-7 494.95	3 518 321.37			
L117	-6 650.93	3 519 166.11		R117	-7 531.98	3 518 257.25			
L118	-6 670.07	3 519 134.15		R118	-8 257.69	3 516 918.49			
L119	-6 684.96	3 519 113.20		R119	-8 431.95	3 516 615.72			
L120	-6 789.12	3 518 998.40		R120	-8 476.63	3 516 550.70			
L121	-7 369.70	3 518 413.23		R121	-8 505.31	3 516 517.22			
L122	-7 477.18	3 518 296.63		R122	-8 566.01	3 516 466.91			
L123	-8 367.39	3 516 644.35		R123	-10 253.44	3 515 252.30			
L124	-8 424.15	3 516 551.66		R124	-10 290.91	3 515 229.18			
L125	-8 449.19	3 516 516.47		R125	-10 332.56	3 515 214.69			
L126	-8 455.06	3 516 513.19		R126	-10 376.19	3 515 208.57			
L127	-10 236.78	3 515 229.18		R127	-10 454.70	3 515 205.88			
L128	-10 250.65	3 515 212.37		R128	-10 499.78	3 515 200.94			
L129	-10 279.04	3 515 200.00		R129	-10 543.51	3 515 188.86			
L130	-10 287.13	3 515 191.60		R130	-10 584.76	3 515 169.98			
L131	-10 317.38	3 515 181.38		R131	-10 640.61	3 515 134.23			
L132	-10 346.29	3 515 175.82		R132	-10 661.40	3 515 112.64			
L133	-10 386.79	3 515 183.19		R133	-10 673.98	3 515 085.78			
L134	-10 453.87	3 515 180.89		R134	-10 677.27	3 515 056.28			
L135	-10 473.14	3 515 163.66		R135	-10 670.77	3 515 026.97			
L136	-10 494.73	3 515 162.45		R136	-10 653.18	3 515 002.45			
L137	-10 527.37	3 515 155.98		R137	-10 628.31	3 514 985.42			
L138	-10 590.32	3 515 128.90		R138	-10 599.08	3 514 977.82			
L139	-10 631.24	3 515 106.57		R139	-10 568.87	3 514 980.63			
L140	-10 641.16	3 515 097.96		R140	-10 541.68	3 514 994.29			
L141	-10 649.90	3 515 079.06		R141	-10 521.64	3 515 016.94			
L142	-10 652.34	3 515 058.35		R142	-10 498.04	3 515 057.06			
L143	-10 648.08	3 515 037.59		R143	-10 483.34	3 515 071.43			
L144	-10 635.64	3 515 020.26		R144	-10 463.93	3 515 081.03			
L145	-10 618.05	3 515 008.22		R145	-10 442.46	3 515 083.89			
L146	-10 597.39	3 515 002.77		R146	-10 421.21	3 515 079.72			
L147	-10 575.96	3 515 004.62		R147	-10 402.41	3 515 068.96			
L148	-10 556.69	3 515 014.35		R148	-10 388.06	3 515 052.74			
L149	-10 538.43	3 515 037.70		R149	-10 379.67	3 515 032.78			
L150	-10 519.31	3 515 070.21		R150	-10 378.12	3 515 011.18			
L151	-10 498.34	3 515 091.46		R151	-10 383.58	3 514 990.22			
L152	-10 471.21	3 515 104.94		R152	-10 395.46	3 514 972.12			
L153	-10 441.70	3 515 108.88		R153	-10 414.23	3 514 957.88			
					<div> <div>Vel</div> <div>11</div> <div>Van</div> <div>13</div> <div>Sheet</div> <div>of</div> <div>P1228/22</div> </div>				

PADRESERWE KOÖRDINATE / ROAD RESERVE CO-ORDINATES									
LINKERKANT/LEFT HAND SIDE					REGTERKANT/RIGHT HAND SIDE				
	Y		X	WG 27 ^a		Y		X	
L154	-10 412.47	3	515	103.15	R154	-10 499.73	3	514	914.44
L155	-10 386.63	3	515	088.35	R155	-10 524.27	3	514	897.37
L156	-10 357.62	3	515	062.33	R156	-10 544.37	3	514	875.26
L157	-10 355.36	3	515	038.59	R157	-10 559.02	3	514	849.20
L158	-10 353.22	3	515	008.89	R158	-10 570.10	3	514	820.91
L159	-10 369.91	3	514	944.83	R159	-10 573.05	3	514	790.02
L160	-10 392.93	3	514	919.47	R160	-10 549.83	3	514	692.99
L161	-10 413.55	3	514	912.68	R161	-10 547.90	3	514	667.37
L162	-10 450.53	3	514	891.92	R162	-10 552.95	3	514	642.17
L163	-10 470.16	3	514	889.02	R163	-10 564.58	3	514	619.26
L164	-10 485.11	3	514	889.62	R164	-10 581.96	3	514	600.32
L165	-10 505.14	3	514	875.58	R165	-10 596.28	3	514	591.59
L166	-10 520.85	3	514	858.29	R166	-10 737.37	3	514	570.47
L167	-10 536.32	3	514	815.05	R167	-10 799.88	3	514	528.23
L168	-10 536.58	3	514	792.02	R168	-10 831.58	3	514	499.04
L169	-10 529.38	3	514	751.25	R169	-10 856.73	3	514	464.05
L170	-10 534.61	3	514	740.21	R170	-11 337.56	3	513	574.69
L171	-10 525.46	3	514	698.60	R171	-11 379.93	3	513	511.36
L172	-10 522.95	3	514	665.84	R172	-11 401.86	3	513	445.12
L173	-10 529.33	3	514	633.98	R173	-11 421.58	3	513	379.16
L174	-10 544.04	3	514	605.02	R174	-11 432.11	3	513	311.12
L175	-10 566.00	3	514	581.08	R175	-11 433.23	3	513	242.27
L176	-10 596.10	3	514	562.92	R176	-11 420.31	3	513	135.00
L177	-10 624.88	3	514	554.81	R177	-11 393.85	3	513	059.63
L178	-10 682.46	3	514	549.25	R178	-11 345.96	3	512	984.47
L179	-10 718.03	3	514	539.33	R179	-10 984.29	3	512	448.42
L180	-10 749.16	3	514	527.25	R180	-10 951.44	3	512	393.04
L181	-10 782.74	3	514	506.09	R181	-10 923.49	3	512	334.97
L182	-10 810.54	3	514	480.57	R182	-10 899.81	3	512	237.16
L183	-10 834.84	3	514	451.99	R183	-10 900.97	3	512	217.71
L184	-10 893.08	3	514	337.28	R184	-10 895.63	3	512	176.82
L185	-11 134.83	3	513	895.10	R185	-10 882.69	3	512	123.06
L186	-11 167.46	3	513	837.90	R186	-10 884.96	3	512	083.77
L187	-11 216.13	3	513	746.08	R187	-10 883.74	3	512	047.77
L188	-11 240.53	3	513	690.43	R188	-10 891.17	3	512	030.93
L189	-11 315.76	3	513	552.89	R189	-10 902.35	3	511	977.24
L190	-11 349.12	3	513	494.68	R190	-10 980.14	3	511	824.46
L191	-11 377.59	3	513	436.01	R191	-11 019.22	3	511	791.03
L192	-11 397.20	3	513	373.65	R192	-11 098.13	3	511	741.36
L193	-11 404.33	3	513	308.75	R193	-11 116.56	3	511	741.63
L194	-11 400.45	3	513	180.73	R194	-11 134.52	3	511	732.65
L195	-11 383.70	3	513	115.37	R195	-11 603.60	3	511	624.80
L196	-11 358.52	3	513	054.98	R196	-11 717.72	3	511	624.84
L197	-11 318.21	3	512	997.22	R197	-11 773.95	3	511	635.16
L198	-11 231.60	3	512	864.62	R198	-11 828.91	3	511	650.79
L199	-11 135.88	3	512	726.06	R199	-12 507.55	3	511	949.74
L200	-11 101.96	3	512	671.98	R200	-12 541.60	3	511	962.02
L201	-11 053.58	3	512	614.90	R201	-13 165.38	3	512	147.99
L202	-11 007.78	3	512	545.78	R202	-13 330.10	3	512	192.75
L203	-10 957.19	3	512	464.34	R203	-13 426.09	3	512	208.70
L204	-10 929.31	3	512	412.47	R204	-13 534.01	3	512	223.64
					<div> <div>Vel 12</div> <div>Sheet of</div> <div>Van 13</div> <div>P1228/22</div> </div>				

PADRESERWE KOÖRDINATE / ROAD RESERVE CO-ORDINATES									
LINKERKANT/LEFT HAND SIDE					REGTERKANT/RIGHT HAND SIDE				
	Y		X	WG 27 ^a		Y		X	
L205	-10 896.21	3	512	355.03	R205	-13 594.46	3	512	229.43
L206	-10 881.80	3	512	342.98	R206	-13 757.74	3	512	239.61
L207	-10 888.72	3	512	313.33	R207	-13 830.81	3	512	239.79
L208	-10 871.14	3	512	249.43	R208	-13 994.62	3	512	228.04
L209	-10 861.29	3	512	183.90	R209	-14 106.60	3	512	216.63
L210	-10 853.21	3	512	077.05	R210	-14 215.50	3	512	200.14
L211	-10 855.75	3	512	032.33	R211	-14 456.05	3	512	148.85
L212	-10 865.75	3	511	988.67	R212	-14 522.59	3	512	136.60
L213	-10 882.93	3	511	947.30	R213	-14 947.61	3	512	042.57
L214	-10 936.00	3	511	847.57	R214	-15 335.47	3	511	945.88
L215	-10 960.92	3	511	806.71	R215	-16 499.33	3	511	641.18
L216	-10 991.23	3	511	770.66	R216	-16 799.91	3	511	550.55
L217	-11 028.32	3	511	741.56	R217	-17 416.56	3	511	340.20
L218	-11 070.48	3	511	720.72	R218	-17 608.58	3	511	234.60
L219	-11 115.15	3	511	706.21	R219	-17 773.74	3	511	142.87
L220	-11 446.25	3	511	619.08	R220	-18 101.58	3	510	956.79
L221	-11 513.73	3	511	603.59	R221	-18 217.82	3	510	893.52
L222	-11 571.55	3	511	594.49	R222	-18 488.49	3	510	764.67
L223	-11 616.75	3	511	588.55	R223	-18 699.79	3	510	668.61
L224	-11 704.12	3	511	590.40	R224	-18 711.72	3	510	656.13
L225	-11 832.41	3	511	616.25	R225	-18 859.28	3	510	589.09
L226	-11 861.27	3	511	625.80	R226	-18 869.36	3	510	586.41
L227	-11 897.52	3	511	645.65	R227	-19 133.00	3	510	463.96
L228	-11 999.04	3	511	685.57	R228	-19 195.98	3	510	433.50
L229	-12 103.09	3	511	735.29	R229	-19 257.38	3	510	399.78
L230	-12 282.04	3	511	811.76	R230	-19 524.01	3	510	241.82
L231	-12 513.30	3	511	913.05	R231	-19 794.72	3	510	084.48
L232	-12 590.86	3	511	942.33	R232	-19 950.94	3	509	995.88
L233	-12 658.16	3	511	964.14	R233	-20 063.33	3	509	922.15
L234	-13 350.36	3	512	161.93	R234	-20 153.01	3	509	854.57
L235	-13 406.98	3	512	174.61	R235	-20 495.06	3	509	567.63
L236	-13 477.40	3	512	186.71	R236	-20 551.90	3	509	526.66
L237	-13 546.78	3	512	194.91	R237	-20 651.87	3	509	445.78
L238	-13 684.57	3	512	206.05	R238	-20 943.82	3	509	200.78
L239	-13 741.70	3	512	206.60	R239	-21 019.20	3	509	135.22
L240	-13 835.48	3	512	205.10	R240	-21 055.48	3	509	104.22
L241	-14 087.91	3	512	184.82	LINKERKANT/LEFT HAND SIDE				
L242	-14 160.38	3	512	174.74	L256	-19 358.45	3	510	307.10
L243	-14 304.55	3	512	148.29	L257	-19 931.33	3	509	973.69
L244	-14 602.31	3	512	087.91	L258	-20 045.81	3	509	901.57
L245	-15 524.41	3	511	867.93	L259	-20 140.86	3	509	828.82
L246	-15 724.49	3	511	810.30	L260	-21 037.55	3	509	084.30
L247	-16 061.99	3	511	726.55					
L248	-16 605.97	3	511	580.09					
L249	-17 347.86	3	511	336.98					
L250	-17 416.57	3	511	309.02					
L251	-17 498.10	3	511	269.32					
L252	-18 165.27	3	510	889.94					
L253	-18 328.78	3	510	806.08					
L254	-19 149.85	3	510	424.04					
L255	-19 272.67	3	510	356.52					
					Vel Sheet	13	Van of	13	P1228/22

Printed by and obtainable from the Government Printer, Bosman Street, Private Bag X85, Pretoria, 0001
Contact Centre Tel: 012-748 6200. eMail: info.egazette@gpw.gov.za
Publications: Tel: (012) 748 6053, 748 6061, 748 6065