



# Government Gazette Staatskoerant

REPUBLIC OF SOUTH AFRICA  
REPUBLIEK VAN SUID AFRIKA

Vol. 702

11

December  
Desember 2023

No. 49850



N.B. The Government Printing Works will not be held responsible for the quality of "Hard Copies" or "Electronic Files" submitted for publication purposes



**AIDS HELPLINE: 0800-0123-22 Prevention is the cure**

**IMPORTANT NOTICE:**

**THE GOVERNMENT PRINTING WORKS WILL NOT BE HELD RESPONSIBLE FOR ANY ERRORS THAT MIGHT OCCUR DUE TO THE SUBMISSION OF INCOMPLETE / INCORRECT / ILLEGIBLE COPY.**

**No FUTURE QUERIES WILL BE HANDLED IN CONNECTION WITH THE ABOVE.**

**Contents**

<i>No.</i>	<i>Gazette No.</i>	<i>Page No.</i>
------------	------------------------	---------------------

**GOVERNMENT NOTICES • GOEWERMENTSKENNISGEWINGS****Transport, Department of/ Vervoer, Departement van**

4181	South African National Roads Agency Limited and the National Roads Act (7/1998): Declaration Amendment of National Road R410 Section 2: Amendment of Declaration No. 733 of 2016.....	49850	3
4181	Suid-Afrikaanse Nasionale Padagentskap Beperk en Nasionale Paaie Wet (7/1998): Verklaring Wysiging van Nasionale Pad R410 Seksie 2: Wysiging van Verklaring No. 733 van 2016 .....	49850	4

---

**GOVERNMENT NOTICES • GOEWERMENTSKENNISGEWINGS**

---

**DEPARTMENT OF TRANSPORT**

NO. 4181

11 December 2023

**THE SOUTH AFRICAN NATIONAL ROADS  
AGENCY SOC LIMITED**Registration No: 1998/009584/30

---

**DECLARATION AMENDMENT OF NATIONAL ROAD R410 SECTION 2**

AMENDMENT OF DECLARATION No. 733 OF 2016.

By virtue of section 40(1)(b) of the South African National Roads Agency Limited and the National Roads Act 1998 (Act No. 7 of 1998), I hereby amend Declaration No. 733 of 2016 by substituting paragraph G of the Schedule, with the accompanying sheets 1 to 16 of Plan No. P1229/22.

In the town of Lady Frere the R410 Section 2 enters the town from the west and then follows the street known as Indwe Road, at the time of declaration.

**(National Road R410 Section 2: Lady Frere – Cala)**  
**MINISTER OF TRANSPORT**

## DEPARTEMENT VAN VERVOER

NO. 4181

11 Desember 2023

**DIE SUID-AFRIKAANSE NASIONALE  
PADAGENTSKAP MSB BEPERK**

Registrasie No: 1998/009584/30

**VERKLARING WYSIGING VAN NASIONALE PAD R410 SEKSIE 2**

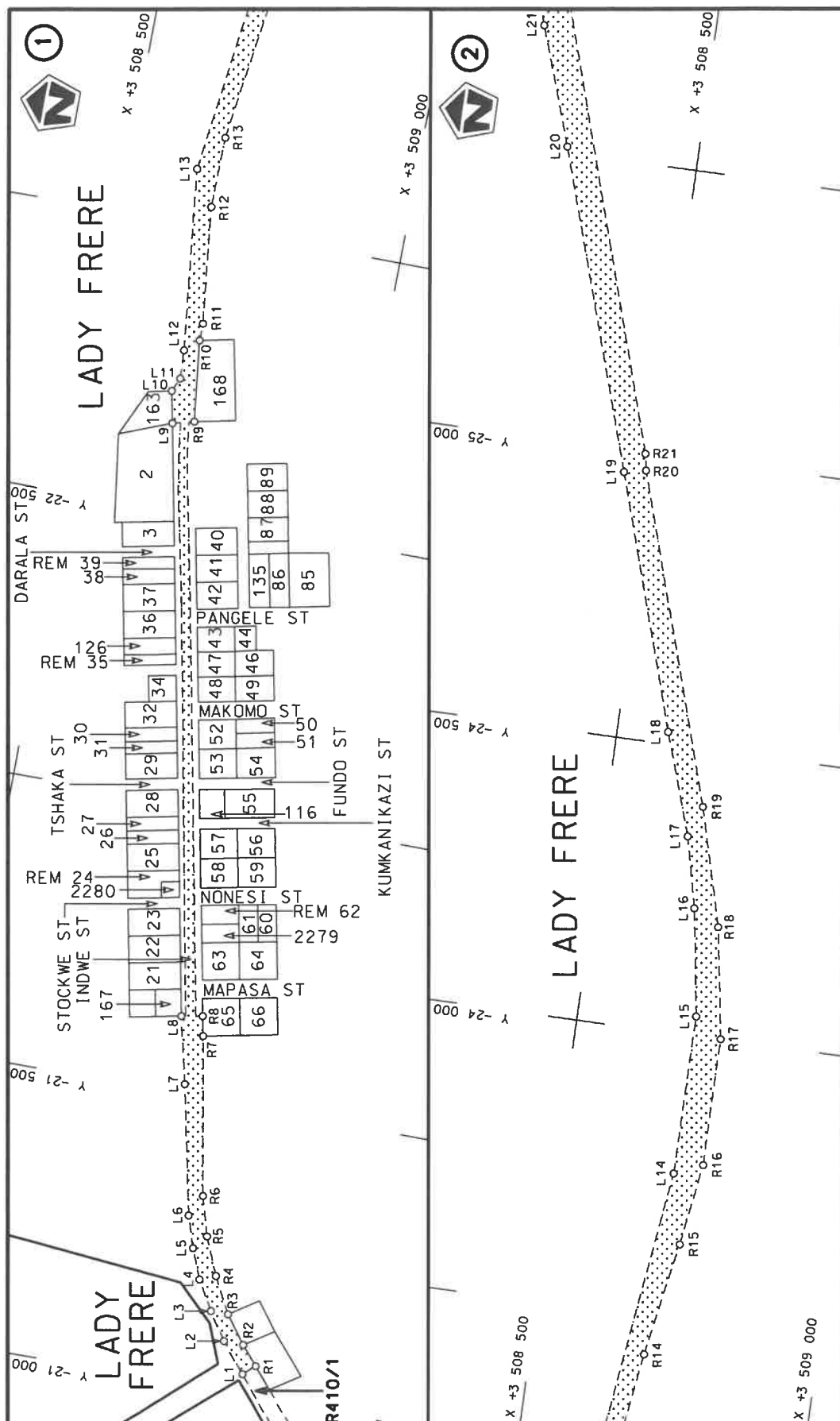
WYSIGING VAN VERKLARING No. 733 VAN 2016.

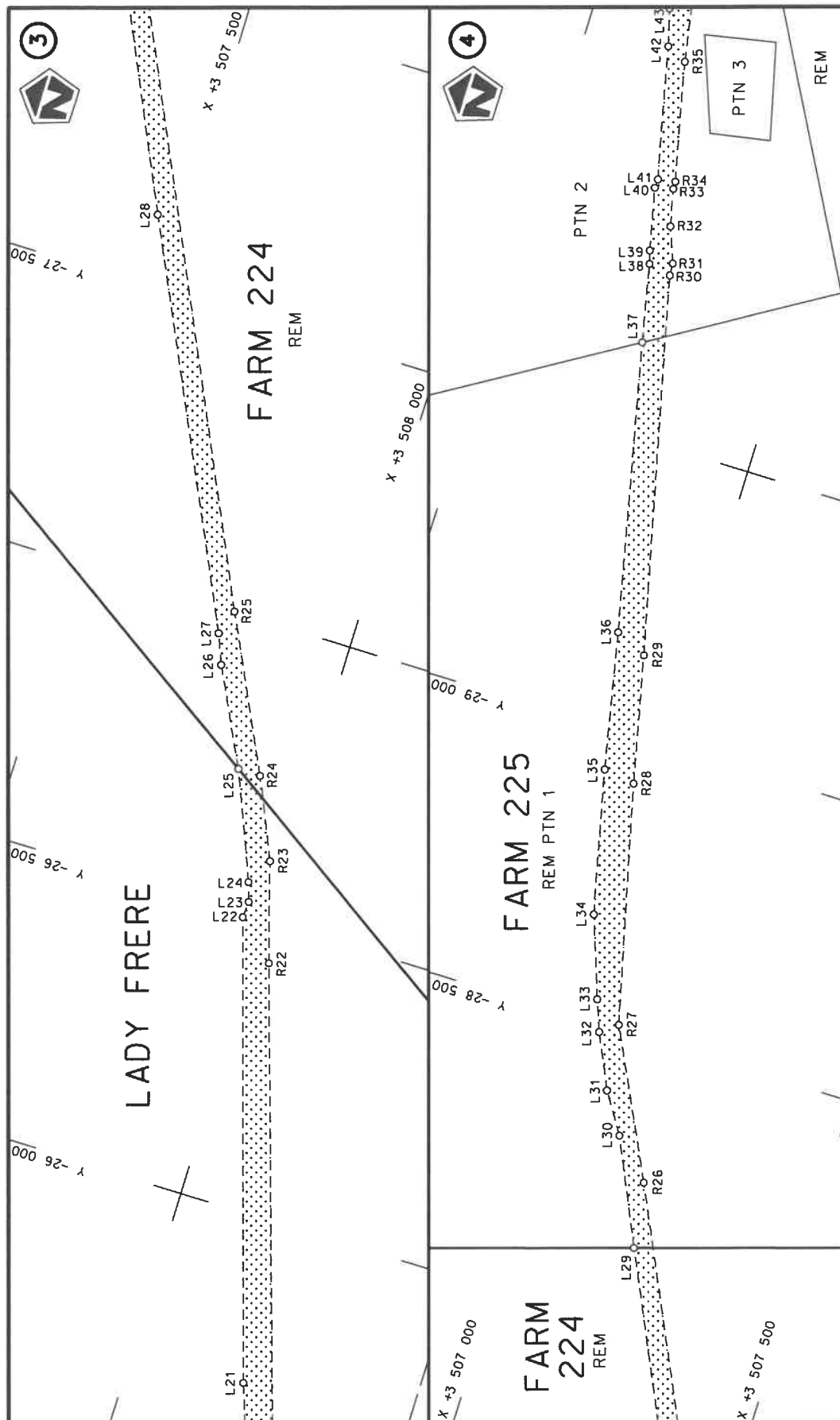
Kragtens Artikel 40(1)(b) van die Suid-Afrikaanse Nasionale Padagentskap Beperk en Nasionale Paaie Wet 1998 (Wet No. 7 van 1998), wysig ek hiermee Verklaring No. 733 van 2016 deur paragraaf G van die Skedule te vervang, met bygaande velle 1 tot 16 van Plan No. P1229/22.

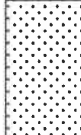
In die dorp Lady Frere kom die R410 Seksie 2 die dorp binne vanuit die weste en volg dan die straat bekend as Indwestraat, tydens datum van verklaring.

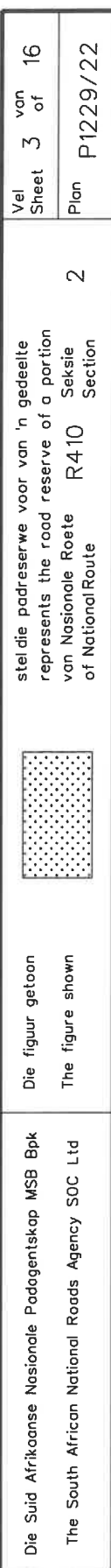
**(Nasionale Pad R410 Seksie 2: Lady Frere – Cala)**

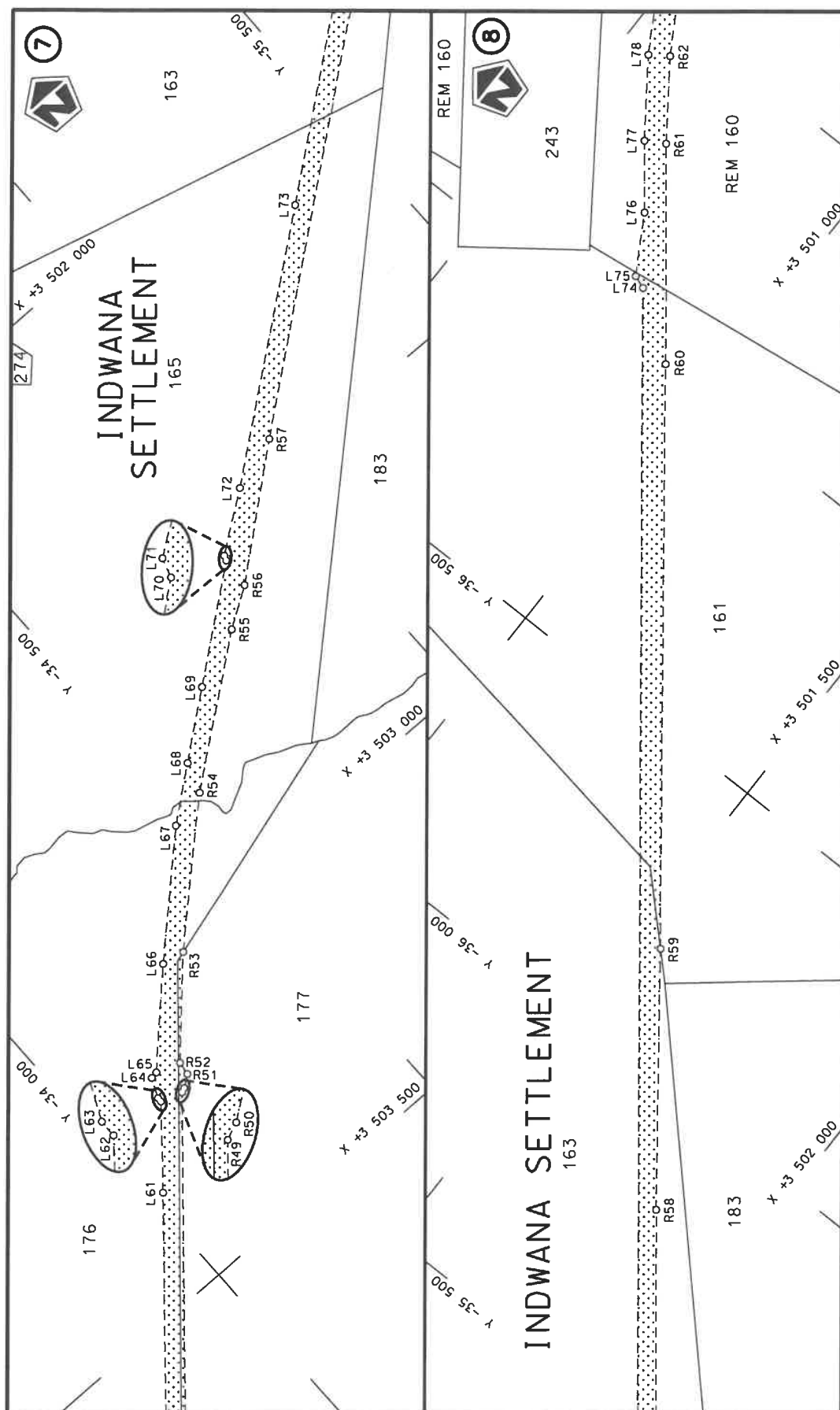
  
**MINISTER VAN VERVOER**






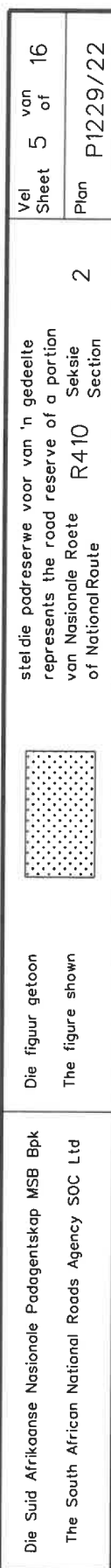
Die Suid Afrikaanse Nasionale Padagentskap MSB Bpk The South African National Roads Agency SOC Ltd	Die figuur getoon The figure shown		stel die padreserwe voor van 'n gedeelte represents the road reserve of a portion van Nasionale Roete R410 of National Route	Vel Sheet 2 of 16 Plan P1229/22
---	---------------------------------------	---	---	--

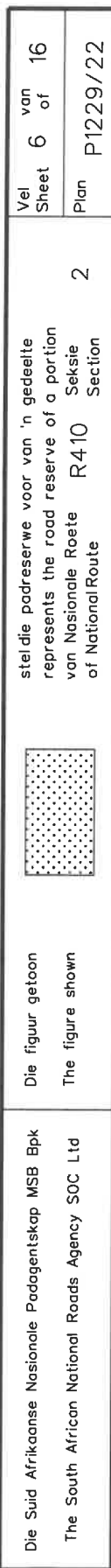


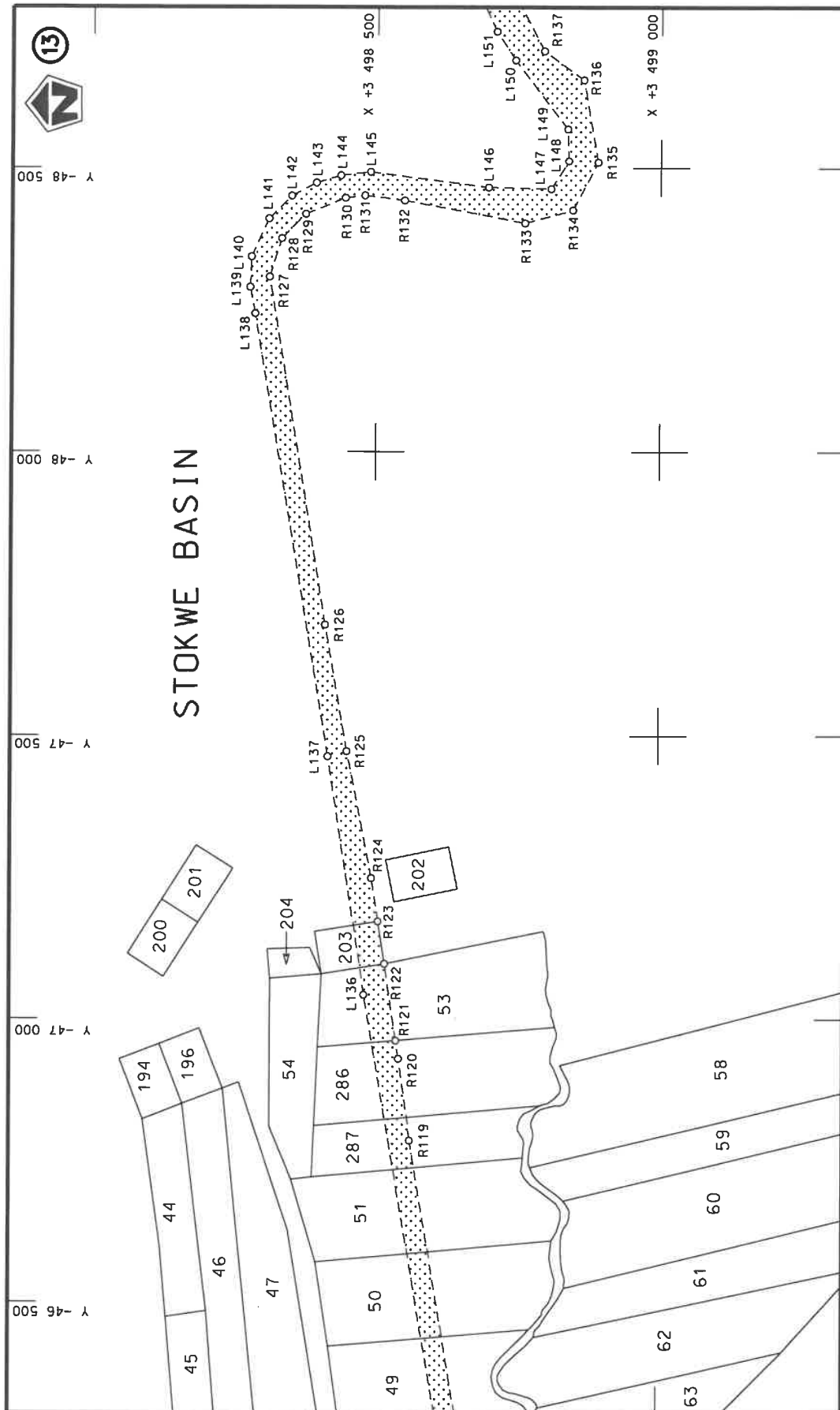


Die Suid Afrikaanse Nasionale Padagentskap MSB Bpk	Die figuur getoon		steldie padreserwe voor van 'n gedeelte represents the road reserve of a portion van Nasionale Roete R410 Seksie of National Route of National Route	Vel Sheet	4 of	16
The South African National Roads Agency SOC Ltd	The figure shown			2	Plan	P1229/22









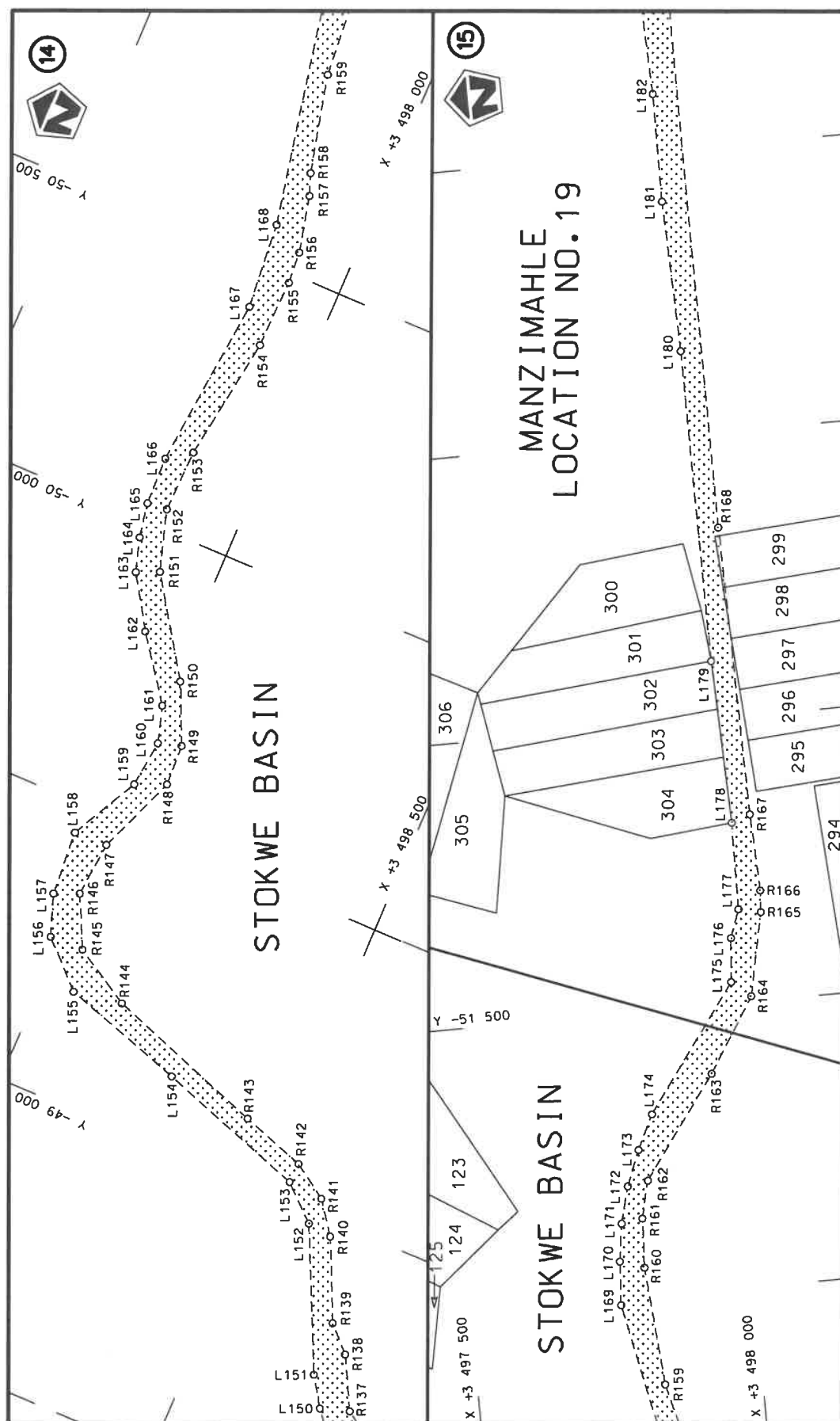
Vel  
Sheet 7 of 16  
Plan P1229/22

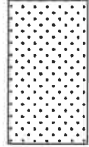
steldie padreserwe voor van 'n gedeelte  
represents the road reserve of a portion  
van Nasionale Roete R410 Seksie  
of National Route

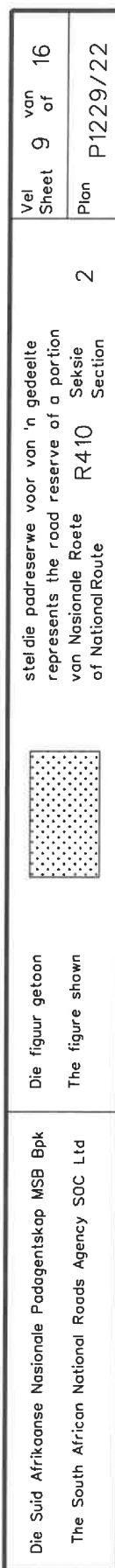


Die figuur getoon  
The figure shown

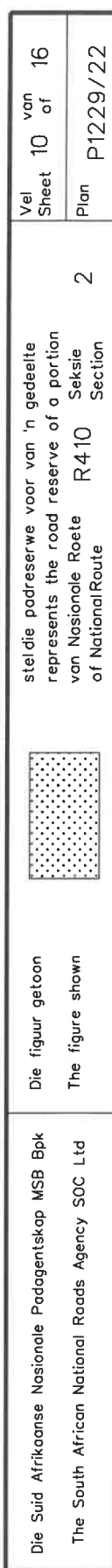
Die Suid Afrikaanse Nasionale Padagentskap MSB Bpk  
The South African National Roads Agency SOC Ltd

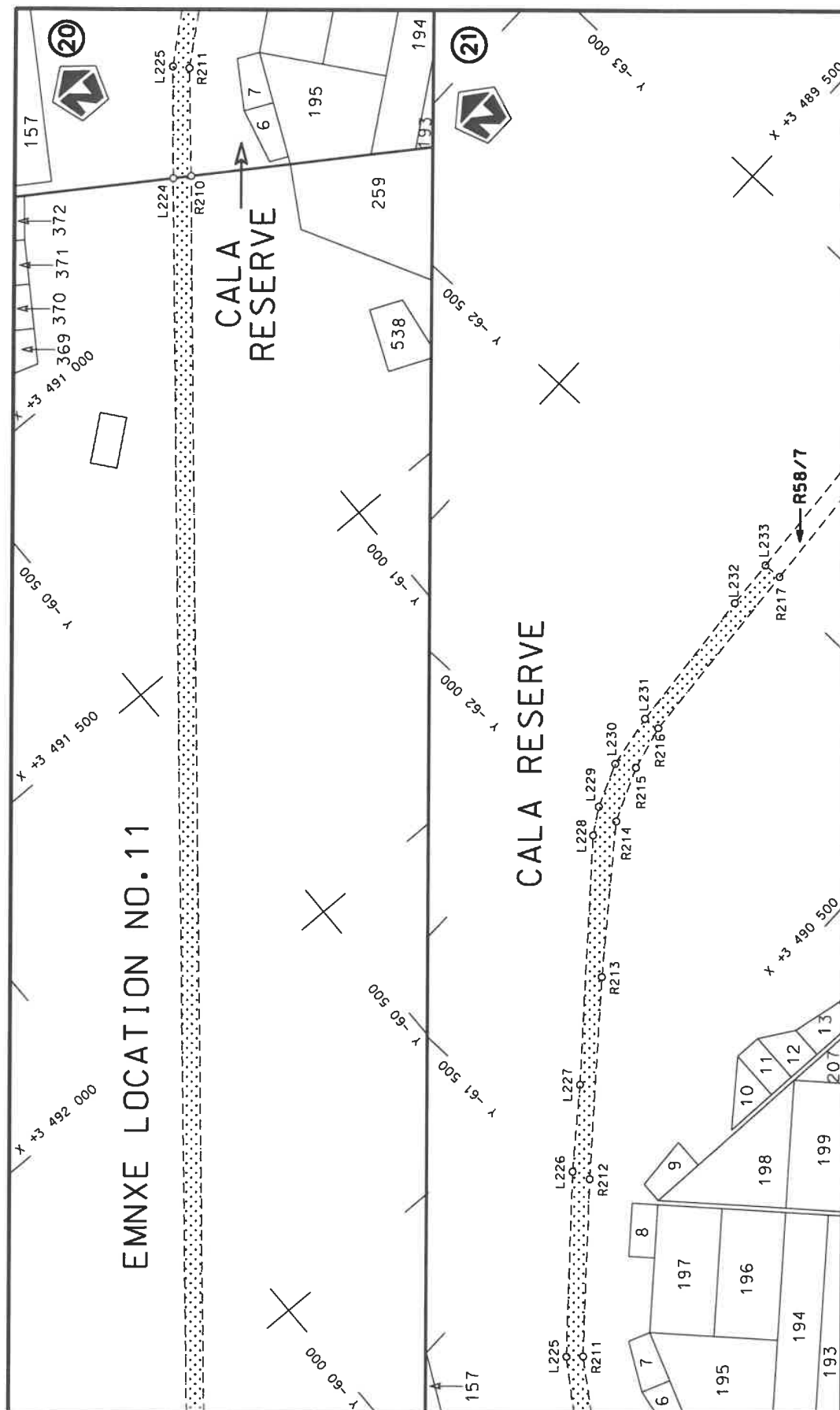



Die Suid Afrikaanse Nasionale Padagentskap MSB Bpk The South African National Roads Agency SOC Ltd	Die figuur getoon The figure shown		stel die podreserwe voor van 'n gedeelte represents the road reserve of a portion van Nasionale Roete R410 Sektie of National Route of Section	Vel Sheet 8 of 16 Plan P1229/22
---	---------------------------------------	---	---	--









Die Suid Afrikaanse Nasionale Podagentskap MSB Bpk	Die figuur getoon		steldie padreserwe voor van 'n gedeelte represents the road reserve of a portion van Nasionale Roete R410 Seksie of National Route of National Route	Vel Sheet	11 of	16
The South African National Roads Agency SOC Ltd	The figure shown			2	Plan	P1229/22

PADRESERWE KOÖRDINATE / ROAD RESERVE CO-ORDINATES						
LINKERKANT/LEFT HAND SIDE				REGTERKANT/RIGHT HAND SIDE		
	Y	X	WG 27 <sup>a</sup>		Y	X
L1	-21 037.55	3 509 084.30		R1	-21 055.48	3 509 104.22
L2	-21 088.93	3 509 041.63		R2	-21 088.18	3 509 076.28
L3	-21 136.52	3 509 009.78		R3	-21 136.23	3 509 040.06
L4	-21 188.28	3 508 980.29		R4	-21 199.53	3 509 007.17
L5	-21 240.24	3 508 958.92		R5	-21 265.02	3 508 979.46
L6	-21 295.12	3 508 940.77		R6	-21 333.30	3 508 959.61
L7	-21 520.00	3 508 892.38		R7	-21 608.64	3 508 908.76
L8	-21 635.29	3 508 864.43		R8	-21 642.81	3 508 901.91
L9	-22 652.84	3 508 660.07		R9	-22 662.50	3 508 697.34
L10	-22 708.30	3 508 648.45		R10	-22 803.69	3 508 680.43
L11	-22 732.06	3 508 659.12		R11	-22 833.90	3 508 681.16
L12	-22 782.22	3 508 656.90		R12	-23 037.20	3 508 658.13
L13	-23 097.96	3 508 621.40		R13	-23 160.27	3 508 659.89
L14	-23 757.25	3 508 705.14		R14	-23 436.50	3 508 697.67
L15	-24 034.60	3 508 705.97		R15	-23 635.61	3 508 732.82
L16	-24 221.84	3 508 676.42		R16	-23 778.63	3 508 754.25
L17	-24 344.92	3 508 647.57		R17	-24 001.08	3 508 754.07
L18	-24 521.35	3 508 588.76		R18	-24 194.78	3 508 722.52
L19	-24 961.19	3 508 449.21		R19	-24 399.63	3 508 666.94
L20	-25 510.73	3 508 271.26		R20	-24 968.91	3 508 486.98
L21	-25 715.13	3 508 201.32		R21	-24 997.91	3 508 481.77
L22	-26 493.45	3 507 960.11		R22	-26 430.19	3 508 027.42
L23	-26 522.21	3 507 962.14		R23	-26 601.34	3 507 976.79
L24	-26 555.23	3 507 951.62		R24	-26 738.64	3 507 916.05
L25	-26 738.52	3 507 876.22		R25	-26 999.81	3 507 788.42
L26	-26 904.04	3 507 793.89		R26	-28 259.16	3 507 193.84
L27	-26 955.44	3 507 773.27		R27	-28 509.89	3 507 070.40
L28	-27 623.07	3 507 455.45		R28	-28 920.59	3 506 970.43
L29	-28 143.54	3 507 211.78		R29	-29 140.26	3 506 921.31
L30	-28 325.28	3 507 128.75		R30	-29 787.80	3 506 767.47
L31	-28 394.20	3 507 084.66		R31	-29 809.10	3 506 766.30
L32	-28 488.17	3 507 041.43		R32	-29 869.94	3 506 743.06
L33	-28 541.83	3 507 021.26		R33	-29 934.09	3 506 728.37
L34	-28 681.85	3 506 971.81		R34	-29 946.69	3 506 727.92
L35	-28 929.64	3 506 915.05		R35	-30 151.46	3 506 681.27
L36	-29 165.55	3 506 866.34		R36	-30 253.27	3 506 663.11
L37	-29 662.09	3 506 756.41		R37	-30 335.42	3 506 636.38
L38	-29 796.37	3 506 727.70		R38	-31 285.85	3 506 422.44
L39	-29 818.78	3 506 721.09		R39	-31 461.17	3 506 332.28
L40	-29 926.11	3 506 696.67		R40	-31 540.44	3 506 270.19
L41	-29 941.69	3 506 697.70		R41	-31 638.87	3 506 172.87
L42	-30 168.82	3 506 645.55		R42	-31 665.84	3 506 134.45
L43	-30 233.08	3 506 627.99		R43	-31 821.70	3 505 951.93
L44	-30 898.30	3 506 478.61		R44	-31 927.30	3 505 824.68
L45	-30 965.43	3 506 456.25		R45	-32 185.30	3 505 526.02
L46	-31 026.51	3 506 449.08		R46	-32 194.14	3 505 510.34
L47	-31 150.09	3 506 416.51		R47	-32 274.36	3 505 428.33
L48	-31 303.02	3 506 355.73		R48	-32 286.50	3 505 403.16
L49	-31 335.22	3 506 337.15		R49	-34 163.46	3 503 215.10
L50	-31 367.80	3 506 335.37		R50	-34 171.38	3 503 211.86
L51	-31 463.43	3 506 271.38		R51	-34 191.82	3 503 196.94
				Vel Sheet 12	Van of 16	P1229/22



PADRESERWE KOÖRDINATE / ROAD RESERVE CO-ORDINATES									
LINKERKANT/LEFT HAND SIDE					REGTERKANT/RIGHT HAND SIDE				
	Y		X	WG 27°		Y		X	
L52	-31 618.60	3	506	135.39	R52	-34 195.17	3	503	173.32
L53	-31 680.62	3	506	056.18	R53	-34 328.47	3	503	029.95
L54	-31 760.30	3	505	945.99	R54	-34 535.90	3	502	837.31
L55	-31 884.73	3	505	824.03	R55	-34 768.27	3	502	657.80
L56	-32 254.95	3	505	378.46	R56	-34 836.83	3	502	613.84
L57	-32 323.28	3	505	309.88	R57	-35 039.31	3	502	448.73
L58	-32 673.18	3	504	890.74	R58	-35 824.37	3	501	830.72
L59	-33 350.88	3	504	098.13	R59	-36 190.21	3	501	550.22
L60	-33 558.42	3	503	867.54	R60	-37 004.66	3	500	916.39
L61	-34 022.10	3	503	326.12	R61	-37 309.41	3	500	675.20
L62	-34 125.20	3	503	202.55	R62	-37 434.42	3	500	584.54
L63	-34 125.31	3	503	194.58	R63	-37 565.27	3	500	504.97
L64	-34 140.70	3	503	160.55	R64	-37 675.22	3	500	448.23
L65	-34 153.09	3	503	158.56	R65	-37 712.21	3	500	424.28
L66	-34 288.67	3	503	022.37	R66	-37 881.72	3	500	360.02
L67	-34 466.27	3	502	853.51	R67	-37 908.60	3	500	411.80
L68	-34 554.64	3	502	784.16	R68	-37 931.33	3	500	402.32
L69	-34 661.85	3	502	699.79	R69	-37 914.61	3	500	357.27
L70	-34 840.97	3	502	559.75	R70	-37 920.70	3	500	343.17
L71	-34 843.76	3	502	550.93	R71	-38 155.67	3	500	259.03
L72	-34 943.30	3	502	479.49	R72	-38 314.26	3	500	208.61
L73	-35 344.73	3	502	168.04	R73	-38 586.25	3	500	150.49
L74	-37 085.49	3	500	800.86	R74	-38 735.95	3	500	132.52
L75	-37 093.88	3	500	777.70	R75	-38 878.66	3	500	133.93
L76	-37 191.15	3	500	720.96	R76	-39 004.56	3	500	131.11
L77	-37 290.15	3	500	641.95	R77	-39 165.09	3	500	137.09
L78	-37 412.84	3	500	553.14	R78	-39 341.18	3	500	162.47
L79	-37 544.74	3	500	472.58	R79	-39 557.55	3	500	211.08
L80	-37 622.60	3	500	425.85	R80	-39 562.57	3	500	219.12
L81	-37 865.62	3	500	319.38	R81	-39 843.34	3	500	279.05
L82	-37 853.58	3	500	271.69	R82	-41 262.75	3	500	617.77
L83	-37 877.15	3	500	263.41	R83	-41 455.48	3	500	668.36
L84	-37 922.27	3	500	304.84	R84	-41 534.56	3	500	670.56
L85	-38 238.79	3	500	197.58	R85	-41 641.75	3	500	654.78
L86	-38 304.06	3	500	178.19	R86	-41 920.80	3	500	577.56
L87	-38 475.10	3	500	137.55	R87	-42 226.03	3	500	502.13
L88	-38 579.81	3	500	119.26	R88	-42 417.28	3	500	444.24
L89	-38 725.35	3	500	103.82	R89	-43 086.92	3	500	258.54
L90	-38 838.65	3	500	088.45	R90	-43 419.65	3	500	169.49
L91	-39 006.64	3	500	091.16	R91	-43 474.43	3	500	143.78
L92	-39 196.18	3	500	105.45	R92	-43 527.48	3	500	115.84
L93	-39 271.30	3	500	115.49	R93	-43 575.55	3	500	080.03
L94	-39 295.30	3	500	124.15	R94	-43 621.64	3	500	041.12
L95	-39 364.68	3	500	136.53	R95	-43 652.30	3	499	988.39
L96	-39 378.20	3	500	121.61	R96	-43 679.13	3	499	934.78
L97	-39 489.43	3	500	158.79	R97	-43 737.28	3	499	772.65
L98	-39 721.01	3	500	211.50	R98	-43 748.58	3	499	744.37
L99	-39 944.99	3	500	269.22	R99	-43 789.21	3	499	674.24
L100	-40 757.15	3	500	464.42	R100	-43 851.43	3	499	599.29
L101	-41 118.73	3	500	546.35	R101	-43 927.11	3	499	558.87
L102	-41 409.93	3	500	622.53	R102	-43 955.55	3	499	519.31
					<div> <div>Vel Sheet</div> <div>13</div> <div>Van of</div> <div>16</div> <div>P1229/22</div> </div>				

PADRESERWE KOÖRDINATE / ROAD RESERVE CO-ORDINATES									
LINKERKANT/LEFT HAND SIDE					REGTERKANT/RIGHT HAND SIDE				
	Y		X	WG 27 <sup>a</sup>		Y		X	
L103	-41 526.00	3	500	636.52	R103	-44 160.20	3	499	348.58
L104	-41 607.28	3	500	628.51	R104	-44 229.56	3	499	309.25
L105	-41 684.29	3	500	608.58	R105	-44 329.67	3	499	237.58
L106	-41 743.51	3	500	598.18	R106	-44 515.50	3	499	111.08
L107	-42 000.49	3	500	524.73	R107	-44 616.43	3	499	021.97
L108	-42 049.09	3	500	504.55	R108	-44 636.83	3	498	983.38
L109	-42 372.52	3	500	414.30	R109	-44 748.75	3	498	928.20
L110	-42 662.27	3	500	339.86	R110	-44 947.71	3	498	888.96
L111	-42 817.83	3	500	293.45	R111	-45 168.01	3	498	839.85
L112	-42 858.07	3	500	285.58	R112	-45 187.46	3	498	840.04
L113	-43 072.12	3	500	226.31	R113	-45 889.41	3	498	719.45
L114	-43 433.56	3	500	121.56	R114	-45 967.52	3	498	712.74
L115	-43 514.89	3	500	073.48	R115	-46 093.43	3	498	688.09
L116	-43 573.55	3	500	009.03	R116	-46 185.24	3	498	667.49
L117	-43 608.38	3	499	980.64	R117	-46 217.76	3	498	668.54
L118	-43 620.82	3	499	943.10	R118	-46 242.36	3	498	657.24
L119	-43 665.39	3	499	881.70	R119	-46 786.99	3	498	564.82
L120	-43 700.77	3	499	781.92	R120	-46 931.28	3	498	545.15
L121	-43 718.76	3	499	703.88	R121	-46 962.29	3	498	539.96
L122	-43 736.15	3	499	666.61	R122	-47 097.82	3	498	519.39
L123	-43 778.59	3	499	613.29	R123	-47 172.41	3	498	507.39
L124	-43 819.09	3	499	576.60	R124	-47 249.35	3	498	495.71
L125	-43 890.94	3	499	492.93	R125	-47 472.88	3	498	450.87
L126	-43 908.35	3	499	477.22	R126	-47 695.24	3	498	411.62
L127	-43 969.31	3	499	448.29	R127	-48 307.66	3	498	311.67
L128	-44 001.58	3	499	413.81	R128	-48 375.29	3	498	332.47
L129	-44 082.39	3	499	364.52	R129	-48 418.00	3	498	373.80
L130	-44 123.12	3	499	307.07	R130	-48 446.86	3	498	443.76
L131	-44 438.28	3	499	061.99	R131	-48 451.01	3	498	478.43
L132	-44 565.55	3	498	976.15	R132	-48 442.39	3	498	548.85
L133	-44 699.17	3	498	900.54	R133	-48 402.59	3	498	760.97
L134	-44 803.62	3	498	867.23	R134	-48 425.39	3	498	844.87
L135	-45 774.32	3	498	702.31	R135	-48 510.00	3	498	889.14
L136	-47 043.87	3	498	482.99	R136	-48 654.66	3	498	862.98
L137	-47 463.42	3	498	417.26	R137	-48 705.16	3	498	793.15
L138	-48 243.03	3	498	286.61	R138	-48 794.16	3	498	746.10
L139	-48 289.58	3	498	277.64	R139	-48 835.95	3	498	704.56
L140	-48 343.31	3	498	280.05	R140	-48 974.01	3	498	640.59
L141	-48 410.18	3	498	310.32	R141	-49 028.88	3	498	599.89
L142	-48 450.39	3	498	349.50	R142	-49 069.27	3	498	538.97
L143	-48 473.24	3	498	392.45	R143	-49 107.25	3	498	424.90
L144	-48 486.16	3	498	435.58	R144	-49 206.15	3	498	142.31
L145	-48 492.49	3	498	488.40	R145	-49 265.76	3	498	042.18
L146	-48 465.34	3	498	696.43	R146	-49 354.34	3	497	999.06
L147	-48 463.00	3	498	806.44	R147	-49 451.21	3	498	007.86
L148	-48 512.02	3	498	837.28	R148	-49 590.74	3	498	063.31
L149	-48 568.16	3	498	835.02	R149	-49 662.83	3	498	060.30
L150	-48 689.15	3	498	742.69	R150	-49 765.88	3	498	013.32
L151	-48 739.48	3	498	709.56	R151	-49 928.50	3	497	904.54
L152	-48 979.98	3	498	596.84	R152	-50 034.24	3	497	872.34
L153	-49 033.83	3	498	536.67	R153	-50 144.18	3	497	875.96
					<div> <div>Vel</div> <div>14</div> <div>Van</div> <div>16</div> <div>of</div> <div>P1229/22</div> </div>				
					<div> <div>Sheet</div> <div></div> <div></div> <div></div> <div></div> <div></div> </div>				

PADRESERWE KOÖRDINATE / ROAD RESERVE CO-ORDINATES									
LINKERKANT/LEFT HAND SIDE					REGTERKANT/RIGHT HAND SIDE				
	Y		X	WG 27°		Y		X	
L154	-49 122.84	3	498 273.19		R154	-50 362.93	3	497 908.52	
L155	-49 191.75	3	498 057.10		R155	-50 483.06	3	497 911.67	
L156	-49 264.81	3	497 982.48		R156	-50 539.05	3	497 907.60	
L157	-49 336.70	3	497 957.09		R157	-50 637.19	3	497 884.38	
L158	-49 449.41	3	497 949.02		R158	-50 674.67	3	497 870.51	
L159	-49 568.15	3	498 010.31		R159	-50 844.77	3	497 829.52	
L160	-49 650.61	3	498 020.14		R160	-51 052.31	3	497 812.22	
L161	-49 714.37	3	498 001.05		R161	-51 138.79	3	497 816.31	
L162	-49 822.11	3	497 922.48		R162	-51 204.30	3	497 831.96	
L163	-49 911.37	3	497 865.73		R163	-51 380.90	3	497 960.61	
L164	-49 970.05	3	497 847.98		R164	-51 510.05	3	498 042.01	
L165	-50 030.35	3	497 836.90		R165	-51 655.62	3	498 072.66	
L166	-50 114.60	3	497 834.50		R166	-51 693.34	3	498 075.18	
L167	-50 417.19	3	497 864.74		R167	-51 827.97	3	498 068.60	
L168	-50 567.99	3	497 851.71		R168	-52 334.67	3	498 059.17	
L169	-50 990.69	3	497 765.66		R169	-53 393.37	3	498 053.58	
L170	-51 067.31	3	497 770.12		R170	-53 563.21	3	498 042.73	
L171	-51 133.24	3	497 779.40		R171	-53 691.83	3	498 043.43	
L172	-51 197.63	3	497 795.94		R172	-53 740.62	3	498 049.20	
L173	-51 259.27	3	497 820.83		R173	-53 866.79	3	498 034.66	
L174	-51 319.62	3	497 849.80		R174	-53 889.76	3	498 033.02	
L175	-51 538.02	3	498 009.41		R175	-54 176.00	3	498 035.23	
L176	-51 614.99	3	498 015.98		R176	-54 255.59	3	498 024.92	
L177	-51 664.18	3	498 033.65		R177	-54 358.24	3	497 978.76	
L178	-51 816.15	3	498 035.37		R178	-54 403.31	3	497 952.34	
L179	-52 101.79	3	498 024.99		R179	-54 495.48	3	497 871.59	
L180	-52 648.84	3	498 021.57		R180	-54 599.03	3	497 727.97	
L181	-52 913.13	3	498 012.42		R181	-54 774.53	3	497 538.47	
L182	-53 102.60	3	498 012.85		R182	-54 895.04	3	497 423.02	
L183	-53 306.80	3	498 003.69		R183	-55 026.15	3	497 274.38	
L184	-53 391.34	3	498 005.78		R184	-55 139.53	3	497 129.50	
L185	-53 519.23	3	497 996.30		R185	-55 199.65	3	497 090.15	
L186	-53 657.92	3	498 001.37		R186	-55 331.54	3	497 026.78	
L187	-53 824.33	3	497 993.53		R187	-55 516.12	3	496 932.54	
L188	-53 906.73	3	497 983.77		R188	-55 606.73	3	496 869.73	
L189	-54 165.18	3	497 981.71		R189	-55 677.90	3	496 833.92	
L190	-54 250.55	3	497 974.98		R190	-55 736.25	3	496 793.71	
L191	-54 360.05	3	497 934.65		R191	-55 931.21	3	496 736.08	
L192	-54 443.70	3	497 868.26		R192	-56 103.73	3	496 767.92	
L193	-54 525.72	3	497 766.85		R193	-56 153.80	3	496 768.02	
L194	-54 589.39	3	497 670.62		R194	-56 167.88	3	496 756.76	
L195	-54 676.04	3	497 572.49		R195	-56 317.55	3	496 727.48	
L196	-54 836.43	3	497 414.34		R196	-56 407.07	3	496 682.07	
L197	-54 934.59	3	497 314.27		R197	-56 496.75	3	496 601.88	
L198	-55 095.01	3	497 111.97		R198	-56 604.20	3	496 478.48	
L199	-55 137.20	3	497 070.05		R199	-56 884.84	3	496 178.06	
L200	-55 184.02	3	497 033.38		R200	-57 002.31	3	496 023.07	
L201	-55 418.24	3	496 931.25		R201	-57 246.44	3	495 689.74	
L202	-55 685.49	3	496 764.87		R202	-57 570.49	3	495 234.15	
L203	-55 738.45	3	496 737.28		R203	-57 917.67	3	494 751.11	
L204	-55 794.56	3	496 715.50		R204	-58 068.87	3	494 554.59	
					<div> <div>Vel 15</div> <div>Sheet of</div> <div>Van 16</div> <div>P1229/22</div> </div>				

PADRESERWE KOÖRDINATE / ROAD RESERVE CO-ORDINATES									
LINKERKANT/LEFT HAND SIDE					REGTERKANT/RIGHT HAND SIDE				
	Y		X	WG 27°		Y		X	
L205	-55 853.32	3	496	701.29	R205	-59 023.40	3	493	397.59
L206	-55 940.86	3	496	688.78	R206	-59 169.42	3	493	216.92
L207	-56 000.50	3	496	686.61	R207	-59 405.22	3	492	970.72
L208	-56 169.59	3	496	708.79	R208	-59 491.78	3	492	878.21
L209	-56 194.90	3	496	707.70	R209	-59 548.72	3	492	811.59
L210	-56 270.82	3	496	699.45	R210	-61 155.02	3	490	854.68
L211	-56 297.65	3	496	693.86	R211	-61 275.20	3	490	706.18
L212	-56 410.65	3	496	635.18	R212	-61 512.02	3	490	500.37
L213	-56 473.02	3	496	561.97	R213	-61 787.44	3	490	272.03
L214	-56 599.24	3	496	438.57	R214	-62 005.67	3	490	102.72
L215	-56 861.08	3	496	157.41	R215	-62 098.53	3	490	063.60
L216	-56 939.23	3	496	057.90	R216	-62 176.56	3	490	044.62
L217	-57 825.37	3	494	825.74	R217	-62 517.75	3	490	019.15
L218	-58 053.21	3	494	526.36					
L219	-59 125.76	3	493	224.80					
L220	-59 157.48	3	493	182.18					
L221	-59 384.99	3	492	950.08					
L222	-59 393.38	3	492	944.04					
L223	-59 490.17	3	492	834.73					
L224	-61 128.13	3	490	837.08					
L225	-61 254.66	3	490	685.12					
L226	-61 500.69	3	490	469.42					
L227	-61 622.09	3	490	373.95					
L228	-61 959.55	3	490	089.56					
L229	-62 003.45	3	490	062.34					
L230	-62 078.65	3	490	032.03					
L231	-62 172.56	3	490	016.17					
L232	-62 429.54	3	489	992.65					
L233	-62 515.13	3	489	986.81					







Printed by and obtainable from the Government Printer, Bosman Street, Private Bag X85, Pretoria, 0001  
Contact Centre Tel: 012-748 6200. eMail: [info.egazette@gpw.gov.za](mailto:info.egazette@gpw.gov.za)  
Publications: Tel: (012) 748 6053, 748 6061, 748 6065