



Government Gazette Staatskoerant

REPUBLIC OF SOUTH AFRICA
REPUBLIEK VAN SUID AFRIKA

Vol. 702

11

December
Desember 2023

No. 49852



N.B. The Government Printing Works will not be held responsible for the quality of "Hard Copies" or "Electronic Files" submitted for publication purposes



AIDS HELPLINE: 0800-0123-22 Prevention is the cure

IMPORTANT NOTICE:

THE GOVERNMENT PRINTING WORKS WILL NOT BE HELD RESPONSIBLE FOR ANY ERRORS THAT MIGHT OCCUR DUE TO THE SUBMISSION OF INCOMPLETE / INCORRECT / ILLEGIBLE COPY.

No FUTURE QUERIES WILL BE HANDLED IN CONNECTION WITH THE ABOVE.

Contents

<i>No.</i>	<i>Gazette No.</i>	<i>Page No.</i>
------------	------------------------	---------------------

GOVERNMENT NOTICES • GOEWERMENTSKENNISGEWINGS**Transport, Department of/ Vervoer, Departement van**

4183	South African National Roads Agency Limited and the National Roads Act (7/1998): Repeal of Declaration No. 936 of 2021 and Re-declaration of National Road R518 Section 1: Lephalale to Marken	49852	3
4183	Suid-Afrikaanse Nasionale Padagentskap Beperk en Nasionale Paaie Wet (7/1998): Intrekking van Verklaring No. 936 van 2021 en Herverklaring van Nasionale Pad R518 Seksie 1: Lephalale to Marken	49852	4

GOVERNMENT NOTICES • GOEWERMENTSKENNISGEWINGS

DEPARTMENT OF TRANSPORT

NO. 4183

11 December 2023

**THE SOUTH AFRICAN NATIONAL ROADS
AGENCY SOC LIMITED****Registration No: 1998/009584/30**

**REPEAL OF DECLARATION No. 936 OF 2021 AND RE-DECLARATION OF NATIONAL ROAD R518
SECTION 1: LEPHALALE TO MARKEN**

By virtue of section 40(1)(b) of the South African National Roads Agency Limited and the National Roads Act 1998 (Act No. 7 of 1998), I hereby repeal Declaration No. 936 of 2021, and by virtue of section 40(1)(a) of the said Act, I hereby declare the route, as indicated on the subjoining Plan P1044/18, sheets 1 to 17, as a National Road.

(National Road R518 Section 1: Lephalale – Marken)

**MINISTER OF TRANSPORT**

DEPARTEMENT VAN VERVOER

NO. 4183

11 Desember 2023

**DIE SUID-AFRIKAANSE NASIONALE
PADAGENTSKAP MSB BEPERK**

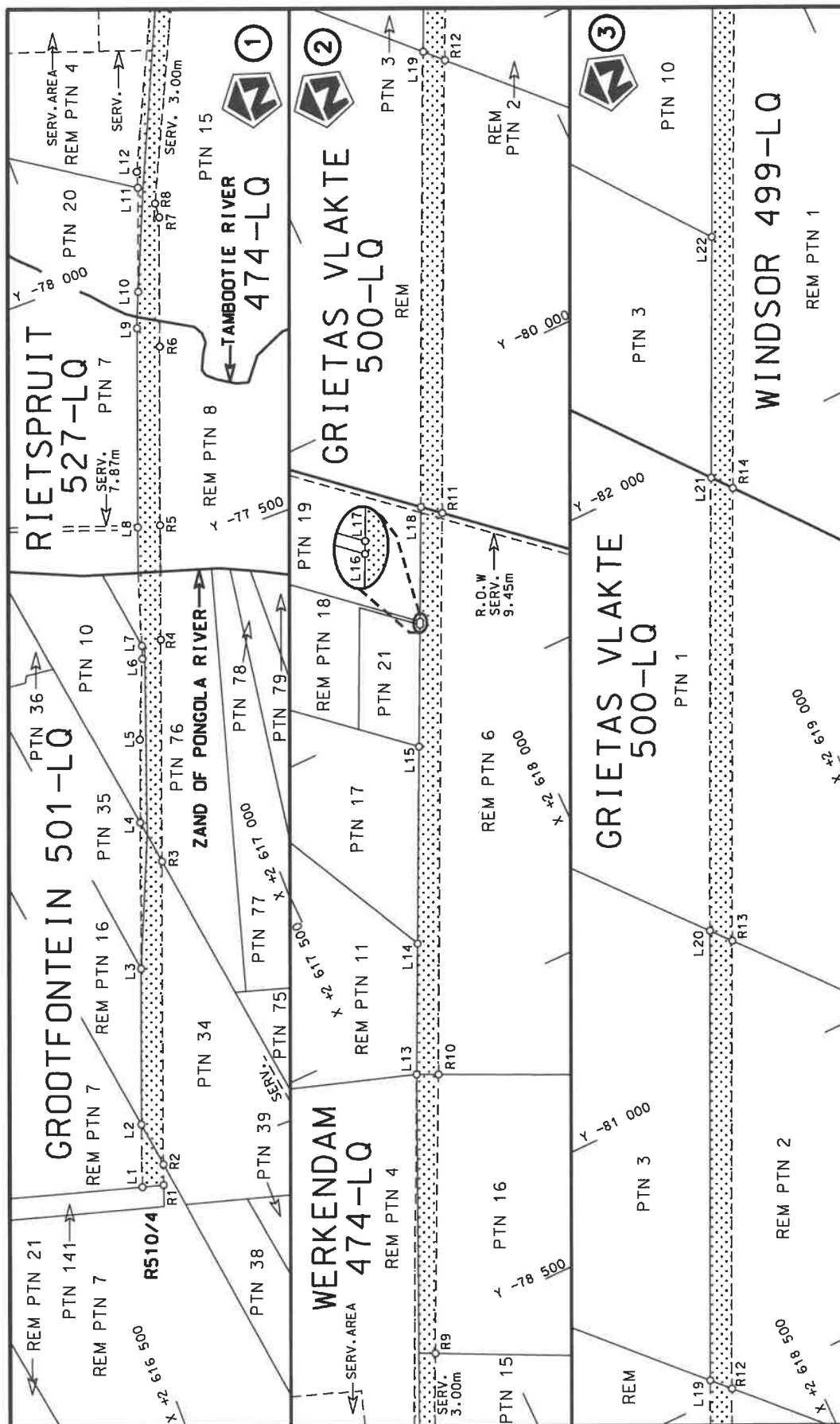
Registrasie No: 1998/009584/30

**INTREKKING VAN VERKLARING No. 936 VAN 2021 EN HERVERKLARING VAN NASIONALE PAD
R518 SEKSIE 1: LEPHALALE TOT MARKEN**

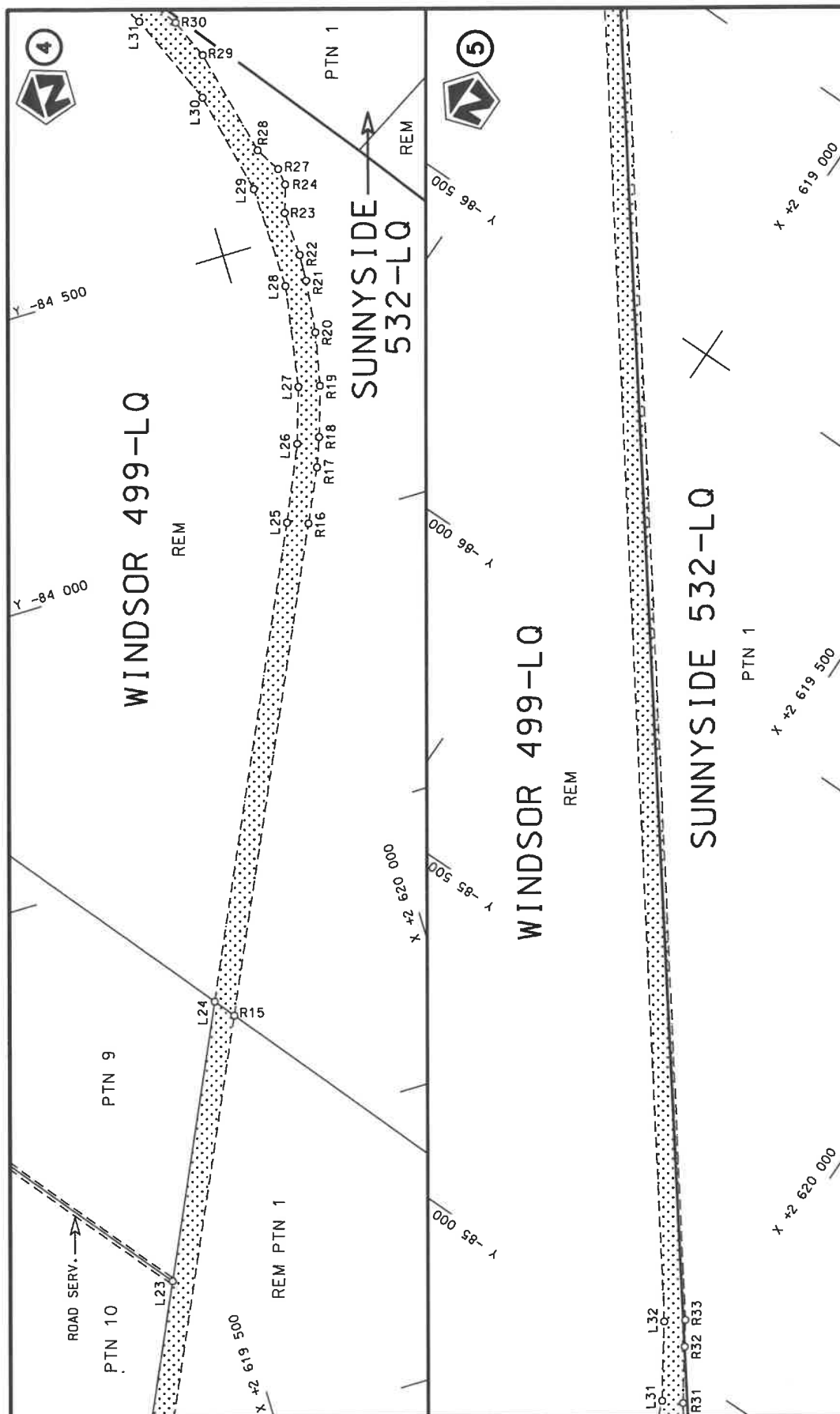
Kragtens Artikel 40(1)(b) van die Suid-Afrikaanse Nasionale Padagentskap Beperk en Nasionale Paaie Wet 1998 (Wet No. 7 van 1998), trek ek hiermee Verklaring No. 936 van 2021 in, en kragtens Artikel 40(1)(a) van genoemde Wet verklaar ek hiermee die roete soos aangetoon op meegaande Plan P1044/18, velle 1 tot 17, as 'n Nasionale Pad.

(Nasionale Pad R518 Seksie 1: Lephalale – Marken)

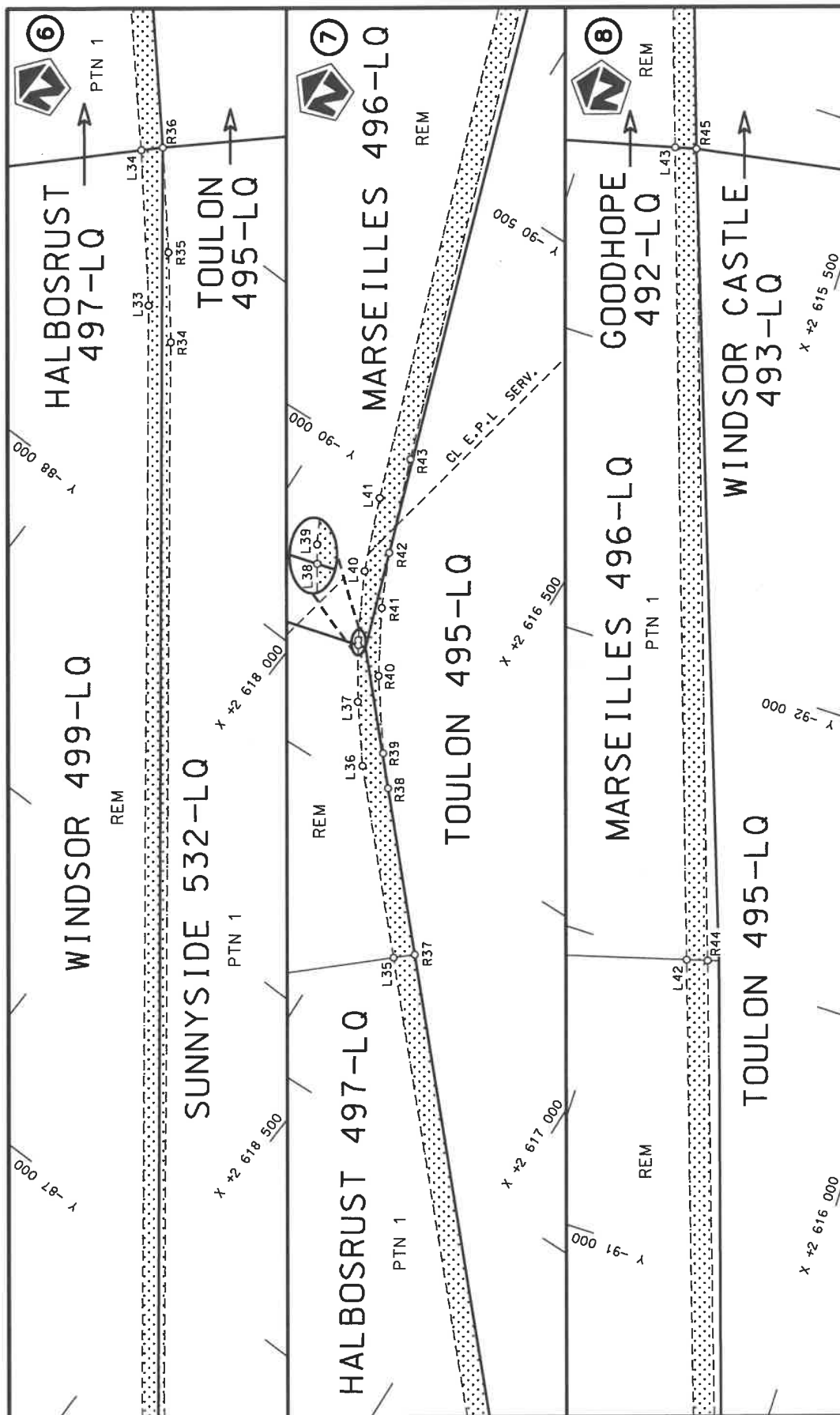

MINISTER VAN VERVOER

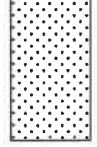


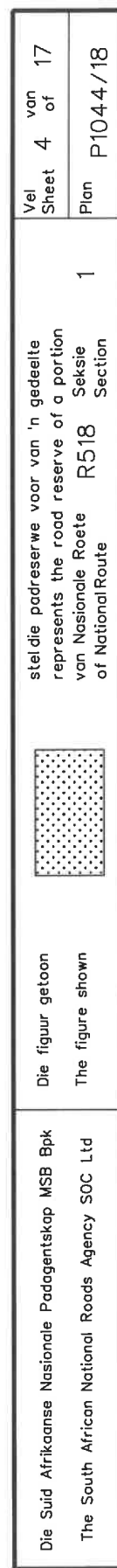
Die Suid Afrikaanse Nasionale Padagentskap MSB Bpk The South African National Roads Agency SOC Ltd	<div data-bbox="1305 1079 1391 1227" data-label="Image"> </div> <div data-bbox="1305 600 1391 1003" data-label="Text"> <p>stelt die padreserwe voor van 'n gedeelte represents the road reserve of a portion van Nasionale Roete R518 of National Route</p> </div>	<div data-bbox="1305 273 1327 474" data-label="Text"> <p>Vel Sheet 1 of 17</p> </div> <div data-bbox="1359 273 1391 474" data-label="Text"> <p>Plan P1044/18</p> </div>
---	--	---

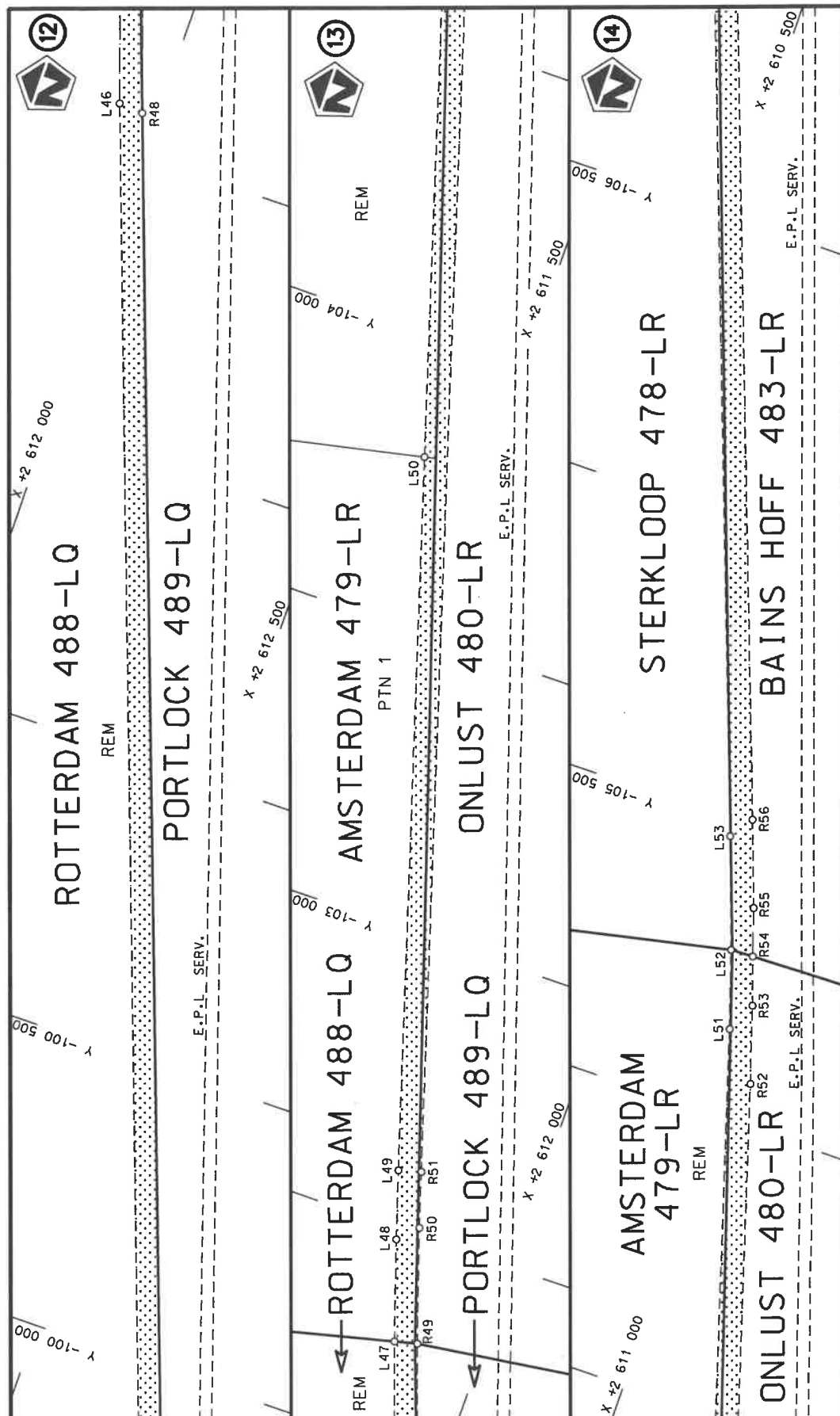


Die Suid Afrikaanse Nasionale Padogentskap MSB Bpk The South African National Roads Agency SOC Ltd	Die figuur getoon The figure shown	<div data-bbox="1305 1077 1390 1227" data-label="Image"> </div>	stel die padreserwe voor van 'n gedeelte represents the road reserve of a portion van Nasionale Roete R518 Seksie of National Route of National Route	Vel Sheet 2 of 17 Plan P1044/18
---	---------------------------------------	---	--	---------------------------------------



Die Suid Afrikaanse Nasionale Padagentskap MSB Bpk The South African National Roads Agency SOC Ltd	Die figuur getoon The figure shown		steldie padreserwe voor van 'n gedeelte represents the road reserve of a portion van Nasionale Roete R518 Sektie of National Route Section
Vel Sheet 3 of 17	1	Plan P1044/18	





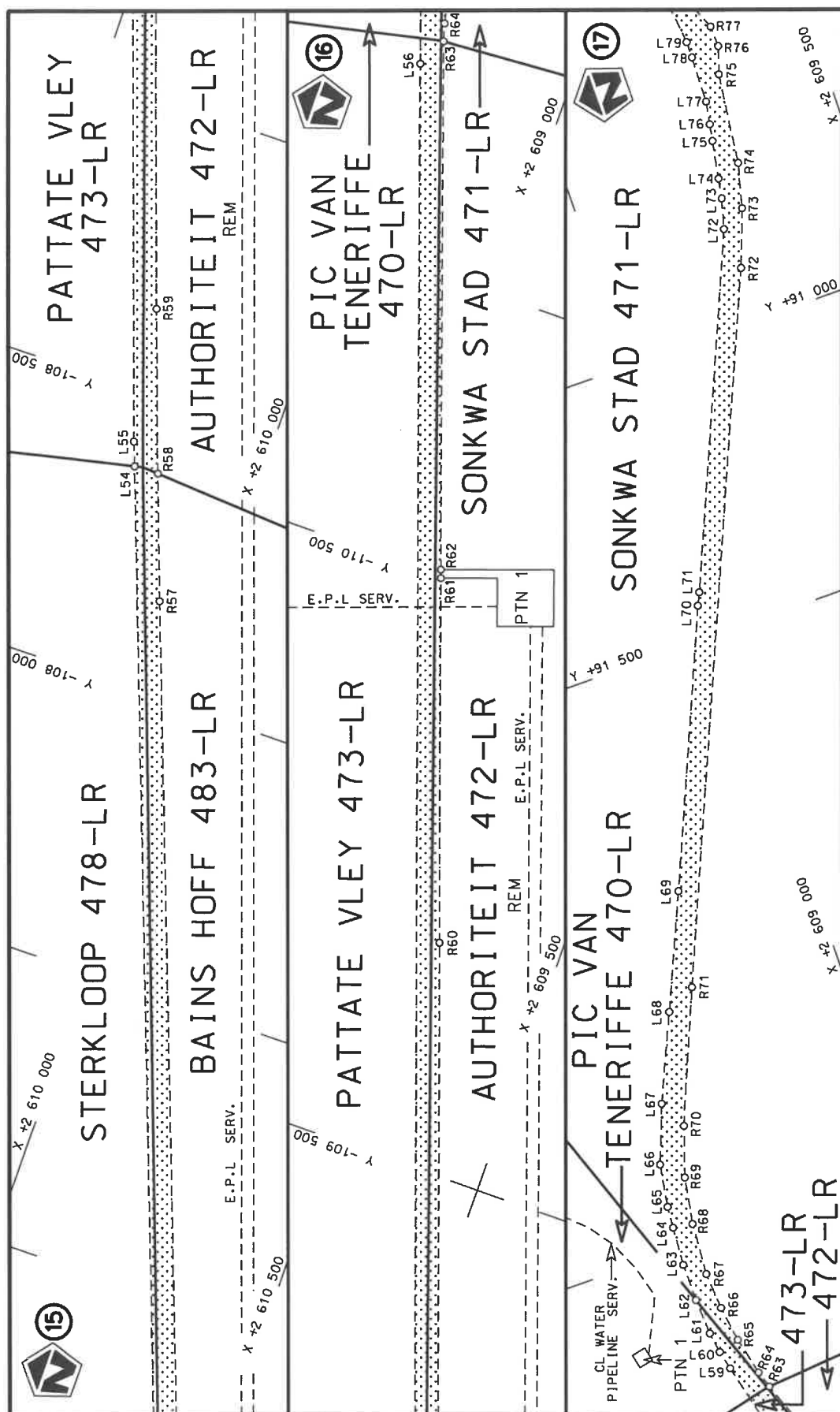
Val
Sheet 5 of 17
Plan P1044/18

steldie podreserwe voor van 'n gedeelte
represents the road reserve of a portion
von Nasionale Roete R518 Seksie
of National Route Section

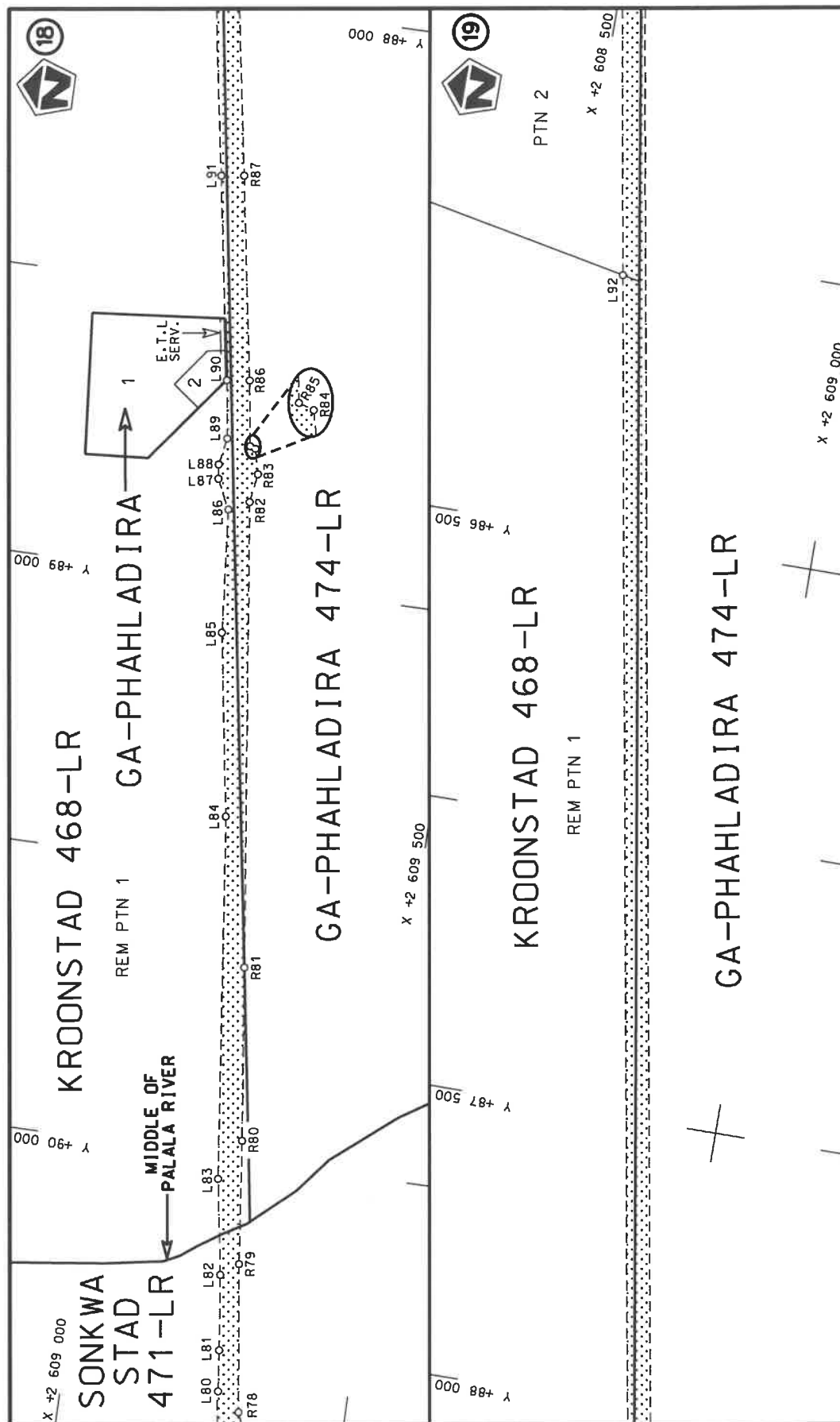



Die figuur getoon
The figure shown

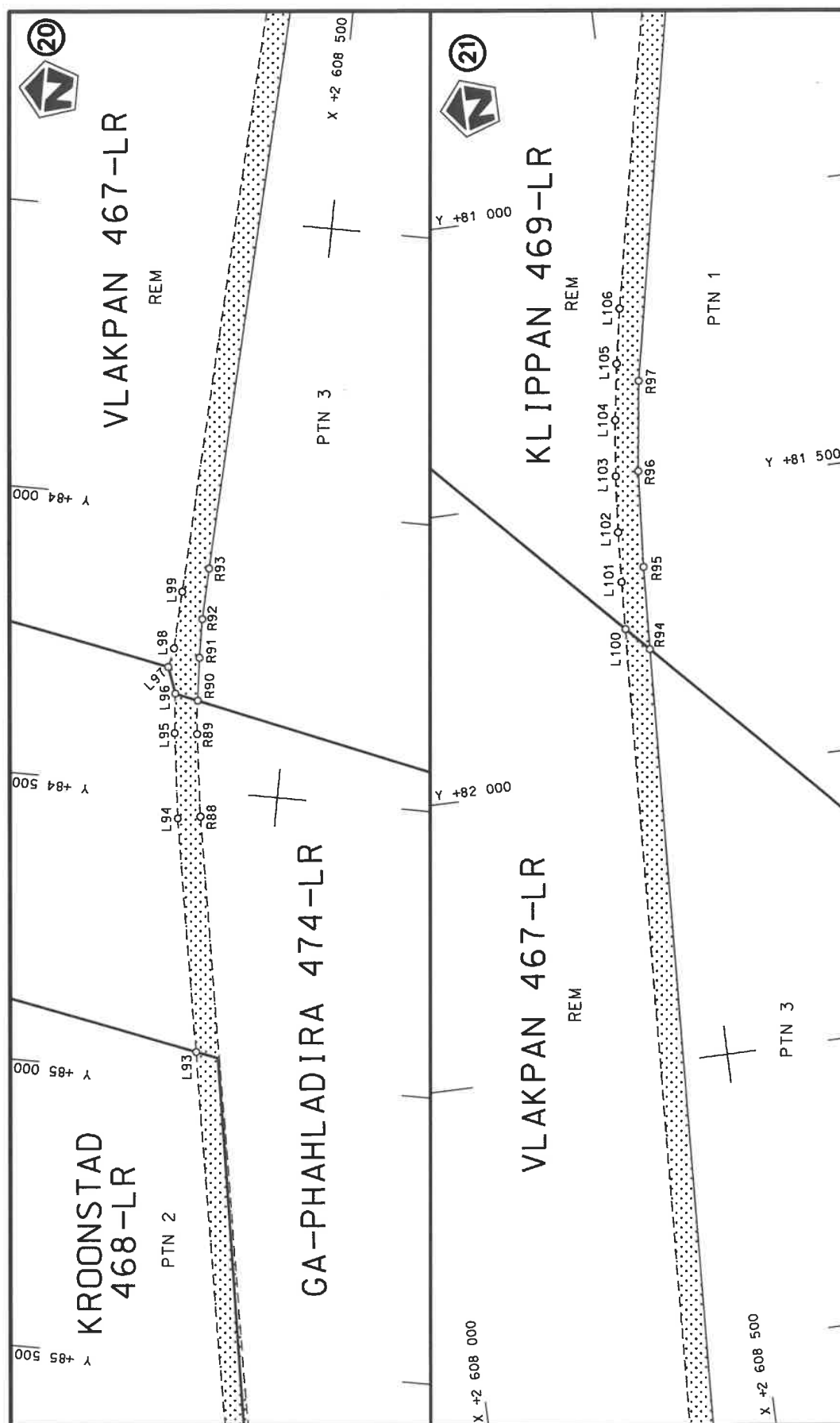
Die Suid Afrikaanse Nasionale Padagentskap MSB Bpk
The South African National Roads Agency SOC Ltd



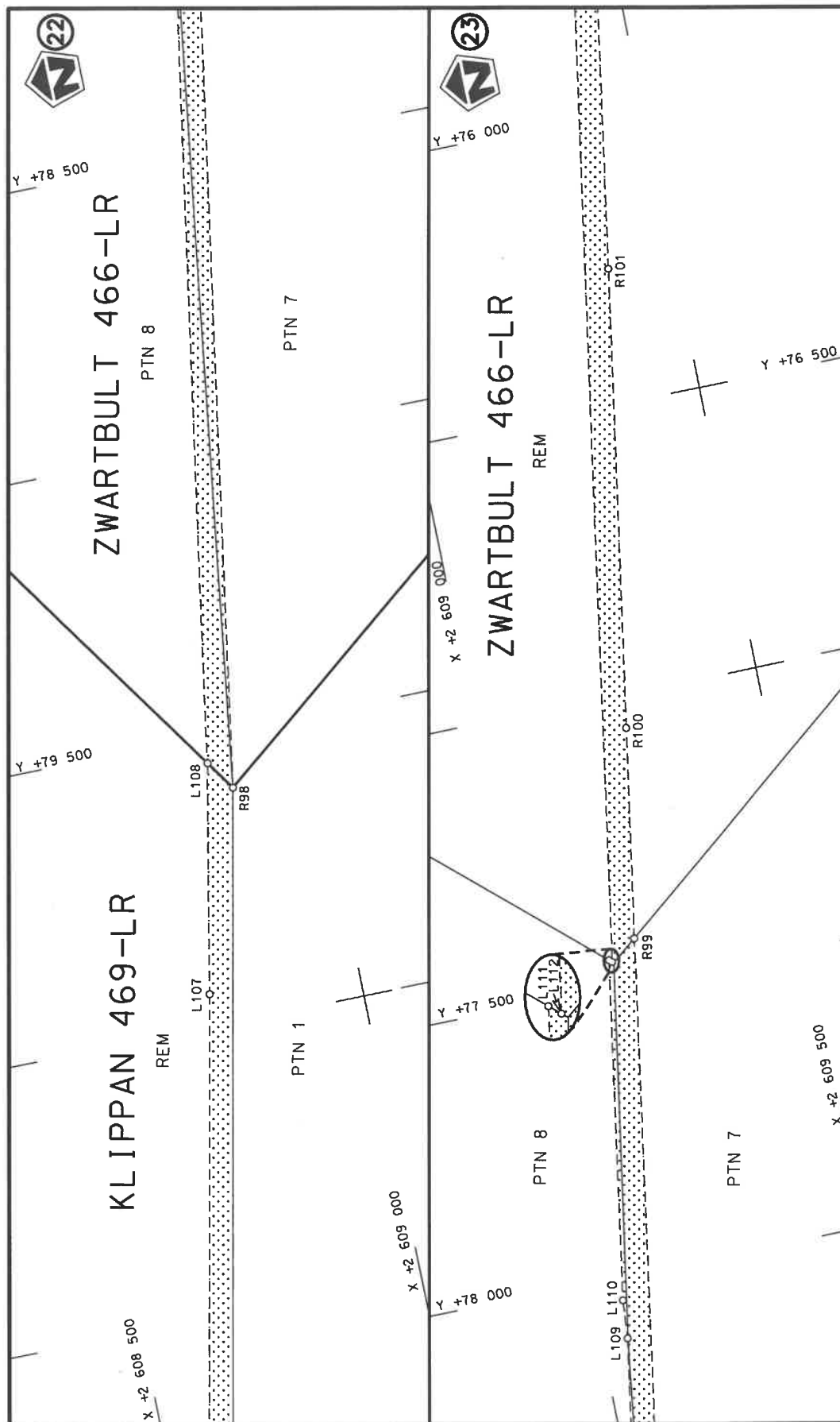
Die Suid Afrikaanse Nasionale Padagentskap MSB Bpk The South African National Roads Agency SOC Ltd	Die figuur getoon The figure shown	stel die padreserwe voor van 'n gedeelte represents the road reserve of a portion van Nasionale Roete R518 of National Route	Vel Sheet 6 of 17 Plan P1044/18
---	---------------------------------------	---	---------------------------------------



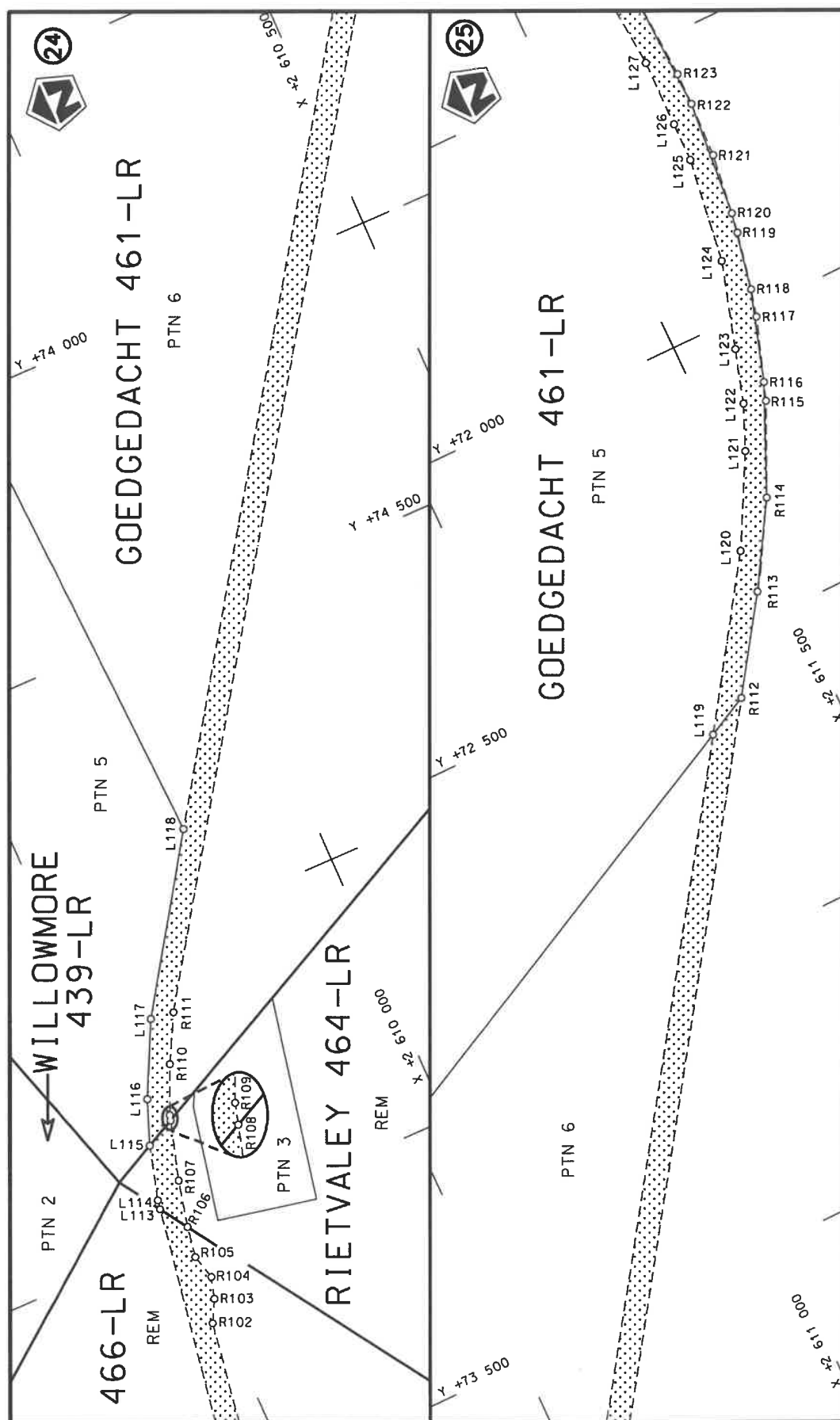
Die Suid Afrikaanse Nasionale Padagentskap MSB Bpk The South African National Roads Agency SOC Ltd	Die figuur getoon The figure shown		steldie padreserwe voor van 'n gedeelte represents the road reserve of a portion van Nasionale Roete R518 Sektie of National Route of National Route
Val Sheet 7 of 17	1	Plan P104.4/18	Section



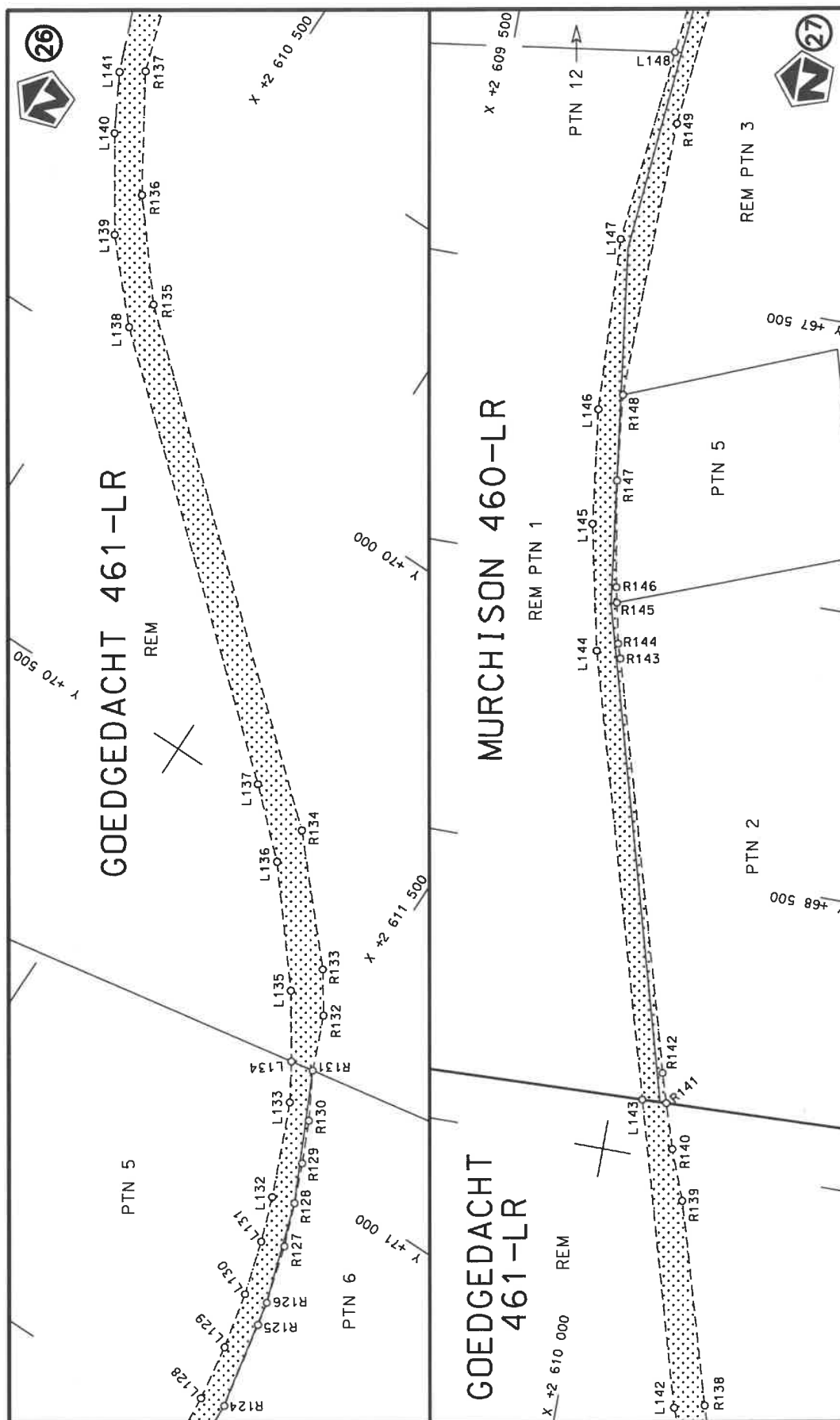
Die Suid Afrikaanse Nasionale Padagentskap MSB Bpk The South African National Roads Agency SOC Ltd	Die figuur getoon The figure shown	steldie padreserwe voor van 'n gedeelte represents the road reserve of a portion van Nasionale Roete R518 Sektie of National Route of National Route	Vel Sheet 8 of 17
		1	Plan P1044/18



Die Suid Afrikaanse Nasionale Padagentskap MSB Bpk The South African National Roads Agency SOC Ltd	Die figuur getoon The figure shown	<div data-bbox="1305 1081 1390 1227" data-label="Image"> </div> <p data-bbox="1294 600 1394 1003">steldie podreserwe voor van 'n gedeelte represents the road reserve of a portion van Nasionale Roete R518 Sektie of National Route R518 Section</p>	Vel Sheet 9 of 17 Plan P1044/18
---	---------------------------------------	---	---------------------------------------



Die Suid Afrikaanse Nasionale Padagentskap MSB Bpk The South African National Roads Agency SOC Ltd	Die figuur getoon The figure shown	stel die padreserwe voor van 'n gedeelte represents the road reserve of a portion van Nasionale Roete of National Route	Vel Sheet 10 of 17	1	Plan P1044/18
---	---------------------------------------	--	-----------------------	---	---------------



steldie padreserwe voor van 'n gedeelte
represents the road reserve of a portion
van Nasionale Roete R518 Seksie
of National Route of National Route

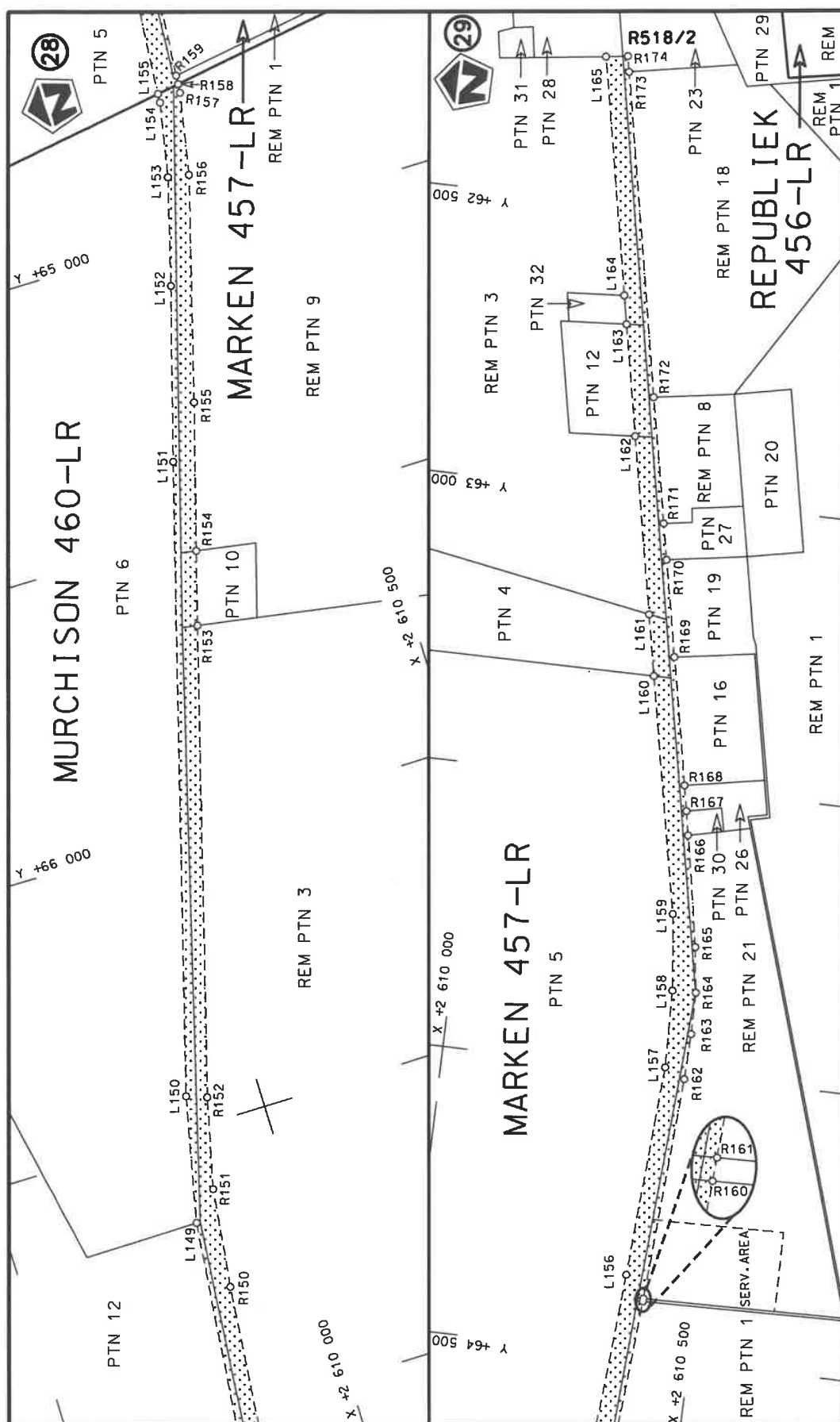


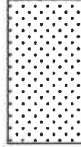
Die figuur getoon
The figure shown

Die Suid Afrikaanse Nasionale Padagentskap MSB Bpk
The South African National Roads Agency SOC Ltd

Vel
Sheet 11 of 17

Plan
P1044/18



Die Suid Afrikaanse Nasionale Padagentskap MSB Bpk The South African National Roads Agency SOC Ltd	Die figuur getoon The figure shown		steeldie padreserwe voor van 'n gedeelte represents the road reserve of a portion van Nasionale Roete of National Route
Vel Sheet 12 of 17	1	Plan P1044/18	Seksie R518

PADRESERWE KOÖRDINATE / ROAD RESERVE CO-ORDINATES									
LINKERKANT/LEFT HAND SIDE					REGTERKANT/RIGHT HAND SIDE				
	Y		X	WG 27 ^a		Y		X	
L1	-76 483.79	2	616 578.14		R1	-76 473.86	2	616 613.99	
L2	-76 586.90	2	616 615.35		R2	-76 507.81	2	616 626.75	
L3	-76 841.61	2	616 712.04		R3	-77 003.96	2	616 813.15	
L4	-77 081.00	2	616 801.60		R4	-77 367.18	2	616 949.61	
L5	-77 217.15	2	616 853.15		R5	-77 554.37	2	617 019.55	
L6	-77 347.21	2	616 907.01		R6	-77 846.10	2	617 129.88	
L7	-77 368.81	2	616 914.43		R7	-78 057.50	2	617 208.92	
L8	-77 564.86	2	616 981.29		R8	-78 082.70	2	617 210.72	
L9	-77 890.62	2	617 103.56		R9	-78 463.55	2	617 391.34	
L10	-77 949.45	2	617 128.02		R10	-78 903.59	2	617 602.61	
L11	-78 119.44	2	617 191.94		R11	-79 790.17	2	618 023.90	
L12	-78 145.77	2	617 200.40		R12	-80 505.55	2	618 361.48	
L13	-78 919.88	2	617 568.15		R13	-81 214.55	2	618 695.21	
L14	-79 126.52	2	617 666.61		R14	-81 930.58	2	619 032.26	
L15	-79 437.40	2	617 814.65		R15	-83 213.17	2	619 636.00	
L16	-79 629.70	2	617 906.23		R16	-84 005.71	2	620 009.06	
L17	-79 634.78	2	617 908.62		R17	-84 096.10	2	620 051.51	
L18	-79 815.52	2	617 994.68		R18	-84 145.94	2	620 070.45	
L19	-80 534.69	2	618 333.40		R19	-84 232.03	2	620 097.51	
L20	-81 247.08	2	618 667.31		R20	-84 324.26	2	620 116.57	
L21	-81 963.28	2	619 005.62		R21	-84 416.07	2	620 127.06	
L22	-82 343.68	2	619 184.73		R22	-84 462.73	2	620 129.05	
L23	-82 796.10	2	619 397.75		R23	-84 541.14	2	620 124.80	
L24	-83 246.75	2	619 609.93		R24	-84 588.72	2	620 139.86	
L25	-84 018.01	2	619 973.46		R27	-84 618.46	2	620 135.89	
L26	-84 145.51	2	620 030.38		R28	-84 660.30	2	620 110.53	
L27	-84 240.90	2	620 060.76		R29	-84 848.28	2	620 065.95	
L28	-84 417.45	2	620 089.40		R30	-84 916.41	2	620 036.09	
L29	-84 596.78	2	620 084.64		R31	-84 953.91	2	620 009.66	
L30	-84 776.87	2	620 044.33		R32	-85 037.47	2	619 955.82	
L31	-84 936.64	2	619 976.32		R33	-85 077.09	2	619 930.28	
L32	-85 054.21	2	619 900.46		R34	-88 295.08	2	617 507.80	
L33	-88 322.72	2	617 437.38		R35	-88 418.03	2	617 408.61	
L34	-88 530.75	2	617 261.08		R36	-88 557.47	2	617 288.55	
L35	-89 277.54	2	616 600.04		R37	-89 302.15	2	616 628.88	
L36	-89 534.24	2	616 372.82		R38	-89 524.04	2	616 432.30	
L37	-89 625.19	2	616 305.54		R39	-89 571.56	2	616 391.98	
L38	-89 708.55	2	616 252.79		R40	-89 683.15	2	616 312.07	
L39	-89 715.91	2	616 248.13		R41	-89 787.12	2	616 252.95	
L40	-89 825.60	2	616 192.52		R42	-89 875.10	2	616 212.15	
L41	-89 948.29	2	616 146.27		R43	-90 033.80	2	616 155.74	
L42	-91 507.90	2	615 614.51		R44	-91 517.89	2	615 650.10	
L43	-92 860.38	2	615 153.38		R45	-92 869.43	2	615 189.63	
L44	-95 938.05	2	614 093.96		R46	-95 946.69	2	614 130.79	
L45	-99 059.26	2	613 029.89		R47	-99 067.25	2	613 067.12	
L46	-102 074.52	2	611 931.95		R48	-102 071.02	2	611 974.69	
L47	-102 311.09	2	611 849.72		R49	-102 320.22	2	611 888.68	
L48	-102 481.99	2	611 793.75		R50	-102 513.73	2	611 825.24	
L49	-102 597.76	2	611 757.29		R51	-102 607.76	2	611 796.06	
L50	-103 794.90	2	611 388.25		R52	-105 073.26	2	611 035.82	
L51	-105 152.27	2	610 969.82		R53	-105 204.43	2	610 994.07	
					<div> <div>Vel 13 Sheet</div> <div>Van 17 of</div> <div>P1044/18</div> </div>				

PADRESERWE KOÖRDINATE / ROAD RESERVE CO-ORDINATES									
LINKERKANT/LEFT HAND SIDE					REGTERKANT/RIGHT HAND SIDE				
	Y		X	WG 27°		Y		X	
L52	-105 284.34	2	610 926.48		R54	-105 285.85	2	610 966.75	
L53	-105 472.66	2	610 859.28		R55	-105 367.22	2	610 939.44	
L54	-108 373.03	2	609 783.41		R56	-105 513.17	2	610 886.66	
L55	-108 414.06	2	609 768.20		R57	-108 163.13	2	609 903.87	
L56	-111 338.20	2	608 738.08		R58	-108 374.37	2	609 826.47	
					R59	-108 648.05	2	609 728.79	
					R60	-109 889.47	2	609 290.63	
					R61	-110 496.21	2	609 077.10	
					R62	-110 510.36	2	609 072.12	
					R63	-111 389.04	2	608 762.89	

PADRESERVE KOÖRDINATE / ROAD RESERVE CO-ORDINATES									
LINKERKANT/LEFT HAND SIDE					REGTERKANT/RIGHT HAND SIDE				
	Y		X	WG 29 ^a		Y		X	
L59	92 728.19	2	608 578.31		R64	92 752.92	2	608 623.47	
L60	92 694.78	2	608 570.40		R65	92 685.84	2	608 607.75	
L61	92 657.87	2	608 565.10		R66	92 622.15	2	608 598.69	
L62	92 594.99	2	608 561.88		R67	92 557.05	2	608 594.41	
L63	92 528.30	2	608 561.35		R68	92 465.56	2	608 600.77	
L64	92 460.33	2	608 566.41		R69	92 383.68	2	608 615.28	
L65	92 422.43	2	608 569.72		R70	92 297.04	2	608 644.16	
L66	92 347.81	2	608 581.93		R71	92 071.08	2	608 738.98	
L67	92 247.41	2	608 620.38		R72	90 903.75	2	609 243.05	
L68	92 098.78	2	608 686.80		R73	90 804.99	2	609 279.60	
L69	91 903.10	2	608 773.08		R74	90 727.17	2	609 299.52	
L70	91 439.55	2	608 972.95		R75	90 568.40	2	609 318.60	
L71	91 418.09	2	608 983.26		R76	90 521.03	2	609 334.04	
L72	90 828.69	2	609 236.97		R77	90 483.93	2	609 332.32	
L73	90 776.47	2	609 251.19		R78	90 439.11	2	609 313.96	
L74	90 741.38	2	609 257.40		R79	90 180.98	2	609 278.65	
L75	90 675.34	2	609 268.99		R80	89 966.30	2	609 253.58	
L76	90 646.01	2	609 274.11		R81	89 665.83	2	609 214.55	
L77	90 606.01	2	609 281.31		R82	88 856.92	2	609 109.48	
L78	90 524.26	2	609 283.54		R83	88 806.78	2	609 116.84	
L79	90 495.63	2	609 283.38		R84	88 763.36	2	609 106.30	
L80	90 407.00	2	609 273.66		R85	88 760.15	2	609 096.46	
L81	90 335.56	2	609 265.63		R86	88 646.29	2	609 079.48	
L82	90 204.32	2	609 248.89		R87	88 293.09	2	609 019.06	
L83	90 038.35	2	609 221.53		R88	84 545.52	2	608 369.11	
L84	89 407.70	2	609 145.53		R89	84 402.09	2	608 349.91	
L85	89 090.00	2	609 093.74		R90	84 344.00	2	608 345.07	
L86	88 876.08	2	609 074.56		R91	84 269.14	2	608 341.06	
L87	88 824.14	2	609 049.76		R92	84 201.32	2	608 339.62	
L88	88 799.30	2	609 046.68		R93	84 111.95	2	608 342.93	
L89	88 753.52	2	609 055.02		R94	81 778.86	2	608 457.22	
L90	88 652.62	2	609 039.98		R95	81 634.64	2	608 464.63	
L91	88 299.88	2	608 979.64		R96	81 467.16	2	608 477.29	
L92	86 046.41	2	608 588.81		R97	81 310.62	2	608 498.34	
L93	84 957.55	2	608 399.97		R98	79 597.35	2	608 847.40	
L94	84 552.36	2	608 329.69		R99	77 422.75	2	609 197.51	
L95	84 404.10	2	608 310.19		R100	77 057.94	2	609 257.23	
L96	84 335.46	2	608 304.29		R101	76 264.47	2	609 385.98	
L97	84 290.14	2	608 287.69		R102	75 661.52	2	609 481.70	
L98	84 256.46	2	608 295.22		R103	75 623.56	2	609 501.85	
L99	84 156.46	2	608 300.39		R104	75 586.13	2	609 512.29	
L100	81 738.53	2	608 419.59		R105	75 542.86	2	609 500.68	
L101	81 655.90	2	608 423.78		R106	75 488.95	2	609 509.43	
L102	81 568.77	2	608 429.21		R107	75 408.17	2	609 527.92	
L103	81 470.91	2	608 437.86		R108	75 306.53	2	609 556.59	
L104	81 373.44	2	608 449.47		R109	75 297.18	2	609 559.23	
L105	81 276.05	2	608 464.50		R110	75 214.56	2	609 596.01	
L106	81 180.78	2	608 481.99		R111	75 133.68	2	609 638.68	
L107	79 942.80	2	608 735.96		R112	72 607.15	2	611 345.43	
L108	79 546.66	2	608 812.62		R113	72 450.65	2	611 451.06	
L109	78 107.03	2	609 046.62		R114	72 308.64	2	611 536.25	
					<div> <div>Vel Sheet</div> <div>15</div> <div>Van of</div> <div>17</div> </div> <div>P1044/18</div>				

PADRESERWE KOÖRDINATE / ROAD RESERVE CO-ORDINATES									
LINKERKANT/LEFT HAND SIDE					REGTERKANT/RIGHT HAND SIDE				
	Y		X	WG 29 ^a		Y		X	
L110	78 040.11	2	609	051.63	R115	72 154.48	2	611	607.46
L111	77 451.22	2	609	146.46	R116	72 123.09	2	611	618.34
L112	77 455.59	2	609	151.38	R117	72 013.61	2	611	655.18
L113	75 440.97	2	609	477.59	R118	71 965.88	2	611	667.12
L114	75 425.05	2	609	480.16	R119	71 865.61	2	611	687.64
L115	75 332.14	2	609	505.32	R120	71 830.51	2	611	693.29
L116	75 255.72	2	609	534.31	R121	71 723.95	2	611	706.86
L117	75 129.02	2	609	596.88	R122	71 626.09	2	611	710.57
L118	74 846.95	2	609	784.41	R123	71 568.48	2	611	710.93
L119	72 643.77	2	611	273.15	R124	71 418.71	2	611	702.76
L120	72 372.94	2	611	454.07	R125	71 267.57	2	611	673.74
L121	72 218.26	2	611	536.45	R126	71 226.60	2	611	665.11
L122	72 141.51	2	611	569.06	R127	71 127.16	2	611	636.10
L123	72 048.83	2	611	596.83	R128	71 054.12	2	611	609.10
L124	71 898.70	2	611	640.94	R129	70 988.29	2	611	581.60
L125	71 714.57	2	611	666.55	R130	70 919.49	2	611	550.02
L126	71 645.62	2	611	667.37	R131	70 842.34	2	611	507.06
L127	71 527.51	2	611	669.05	R132	70 750.93	2	611	469.60
L128	71 429.29	2	611	661.14	R133	70 684.09	2	611	423.87
L129	71 331.62	2	611	646.26	R134	70 500.63	2	611	259.15
L130	71 234.41	2	611	624.75	R135	69 874.02	2	610	535.26
L131	71 141.77	2	611	597.56	R136	69 725.09	2	610	412.66
L132	71 065.86	2	611	570.69	R137	69 541.09	2	610	298.11
L133	70 910.42	2	611	504.46	R138	69 412.20	2	610	256.27
L134	70 849.27	2	611	467.19	R139	69 065.58	2	610	153.82
L135	70 745.88	2	611	397.97	R140	68 979.18	2	610	120.40
L136	70 570.31	2	611	253.55	R141	68 902.07	2	610	096.38
L137	70 475.08	2	611	150.43	R142	68 851.08	2	610	080.50
L138	69 930.38	2	610	521.40	R143	68 148.34	2	609	878.15
L139	69 809.19	2	610	411.38	R144	68 123.45	2	609	869.46
L140	69 660.90	2	610	313.01	R145	68 053.13	2	609	854.52
L141	69 566.78	2	610	261.15	R146	68 026.51	2	609	848.86
L142	69 425.50	2	610	204.31	R147	67 842.21	2	609	816.51
L143	68 903.45	2	610	053.79	R148	67 692.81	2	609	800.16
L144	68 142.36	2	609	834.36	R149	67 208.82	2	609	807.80
L145	67 924.91	2	609	787.51	R150	66 784.93	2	609	849.74
L146	67 725.66	2	609	761.79	R151	66 612.39	2	609	871.61
L147	67 425.09	2	609	747.13	R152	66 455.00	2	609	909.01
L148	67 085.84	2	609	782.11	R153	65 659.78	2	610	136.08
L149	66 660.81	2	609	825.93	R154	65 534.08	2	610	172.71
L150	66 442.49	2	609	874.22	R155	65 284.24	2	610	245.54
L151	65 372.83	2	610	180.06	R156	64 900.54	2	610	353.88
L152	65 077.14	2	610	266.41	R157	64 758.55	2	610	380.63
L153	64 893.52	2	610	317.13	R158	64 743.14	2	610	381.85
L154	64 764.53	2	610	342.10	R159	64 727.87	2	610	383.05
L155	64 749.17	2	610	343.29	R160	64 403.02	2	610	408.60
L156	64 359.21	2	610	373.70	R161	64 397.80	2	610	408.93
L157	63 989.79	2	610	397.31	R162	64 006.83	2	610	433.32
L158	63 854.68	2	610	393.50	R163	63 926.93	2	610	435.67
L159	63 721.15	2	610	378.09	R164	63 853.99	2	610	434.89
L160	63 311.22	2	610	295.13	R165	63 774.56	2	610	424.41
					<div> <div>Vel</div> <div>Sheet</div> </div> <div>16</div> <div>Van</div> <div>of</div> <div>17</div> <div>P1044/18</div>				

PADRESERWE KOÖRDINATE / ROAD RESERVE CO-ORDINATES														
LINKERKANT/LEFT HAND SIDE					REGTERKANT/RIGHT HAND SIDE									
	Y		X	WG 29°		Y		X						
L161	63	205.13	2	610	273.66	R166	63	581.51	2	610	388.22			
L162	62	898.02	2	610	211.51	R167	63	539.54	2	610	380.36			
L163	62	705.14	2	610	172.48	R168	63	495.23	2	610	371.34			
L164	62	655.54	2	610	162.51	R169	63	274.21	2	610	326.38			
L165	62	244.13	2	610	079.19	R170	63	106.53	2	610	292.27			
						R171	63	043.78	2	610	279.51			
						R172	62	826.48	2	610	235.31			
						R173	62	266.12	2	610	122.66			
						R174	62	238.92	2	610	117.19			

Printed by and obtainable from the Government Printer, Bosman Street, Private Bag X85, Pretoria, 0001
Contact Centre Tel: 012-748 6200. eMail: info.egazette@gpw.gov.za
Publications: Tel: (012) 748 6053, 748 6061, 748 6065