



Government Gazette Staatskoerant

REPUBLIC OF SOUTH AFRICA
REPUBLIEK VAN SUID AFRIKA

Vol. 704

23

February
Februarie

2024

No. 50168



N.B. The Government Printing Works will not be held responsible for the quality of "Hard Copies" or "Electronic Files" submitted for publication purposes



AIDS HELPLINE: 0800-0123-22 Prevention is the cure

IMPORTANT NOTICE:

THE GOVERNMENT PRINTING WORKS WILL NOT BE HELD RESPONSIBLE FOR ANY ERRORS THAT MIGHT OCCUR DUE TO THE SUBMISSION OF INCOMPLETE / INCORRECT / ILLEGIBLE COPY.

No FUTURE QUERIES WILL BE HANDLED IN CONNECTION WITH THE ABOVE.

Contents

<i>No.</i>	<i>Gazette No.</i>	<i>Page No.</i>
------------	------------------------	---------------------

GOVERNMENT NOTICES • GOEWERMENTSKENNISGEWINGS**Transport, Department of/ Vervoer, Departement van**

4423	South African National Roads Agency Limited and the National Roads Act (7/1998): Declaration amendment of National Roads N8 Section 12 and N8 Section 13 and declaration of the extention of National Road N8 Section 12 – District of Thabo Mofutsanyane, in the Province of the Free State	50168	3
4423	Suid-Afrikaanse Nasionale Padagentskap Beperk en Nasionale Paaie Wet (7/1998): Verklaring Wysiging van Nasionale Paaie N8 Seksie 12 en N8 Seksie 13 en verklaring van die verlenging van Nasionale Pad N8 Seksie 12 – district van Thabo Mofutsanyane, in die Provinsie Vrystaat	50168	4

GOVERNMENT NOTICES • GOEWERMENTSKENNISGEWINGS

DEPARTMENT OF TRANSPORT

NO. 4423

23 February 2024

**THE SOUTH AFRICAN NATIONAL ROADS
AGENCY SOC LIMITED**Registration No: 1998/009584/30

**A. DECLARATION AMENDMENT OF NATIONAL ROADS N8 SECTION 12 AND N8 SECTION 13
AND DECLARATION OF THE EXTENTION OF NATIONAL ROAD N8 SECTION 12 – DISTRICT
OF THABO MOFUTSANYANE, IN THE PROVINCE OF THE FREE STATE**

- i) By virtue of Section 40 (1)(a) of The South African National Road Agency Limited and National Roads Act 1998 (Act No. 7 of 1998), I hereby declare the section of the road, commencing from its intersection with existing National Road N8 Section 12 and Road R26 Section 5, up to its intersection with existing National Road N8 Section 13, as a National Road.
- ii) By virtue of section 40(1)(b) of The South African National Roads Agency Limited and National Roads Act, 1998 (Act No. 7 of 1998), I hereby amend (I) Declaration No. 901 of 2021 the section of the road from the common boundary between the farms Damplaats 55 and Newlands 42 up to its intersection with Road R26 Section 5, near points L243 and R239 on sheet 14 of Plan No. P1142/19, (II) Declaration No. 900 of 2021 the section of the road from points L43 and R39 on sheet 2 of Plan No. P1146/19 up to its end at the Lesotho National Border, by substituting all sheets of their respective Plans with the accompanying sheets 1 to 9 of Plan No. P1234/23.

[National Road N8 Section 12: R26 Intersection – Lesotho National Border]
MINISTER OF TRANSPORT

DEPARTEMENT VAN VERVOER

NO. 4423

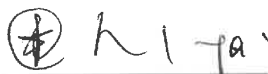
23 Februarie 2024

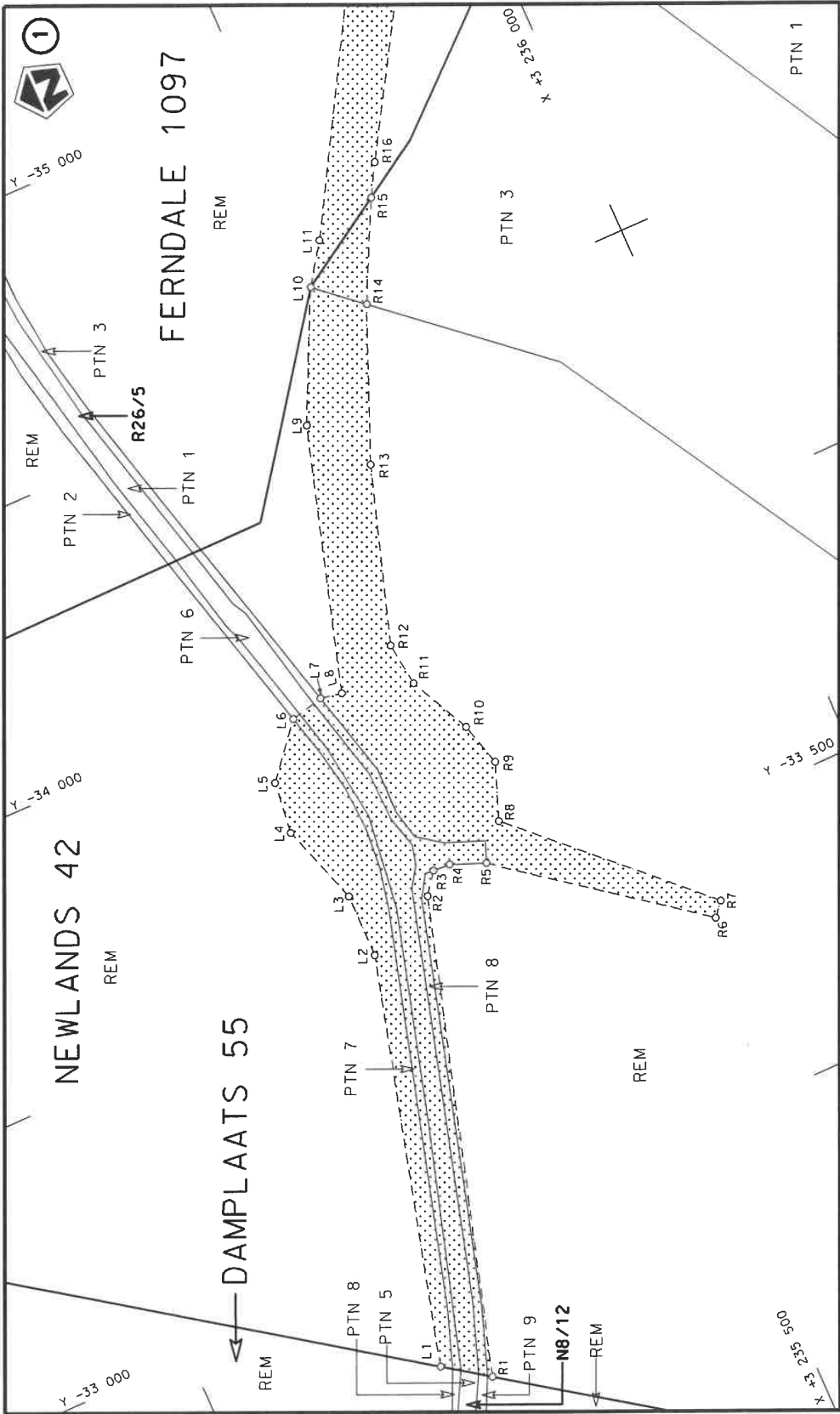
**DIE SUID-AFRIKAANSE NASIONALE
PADAGENTSKAP MSB BEPERK**

Registrasie No: 1998/009584/30

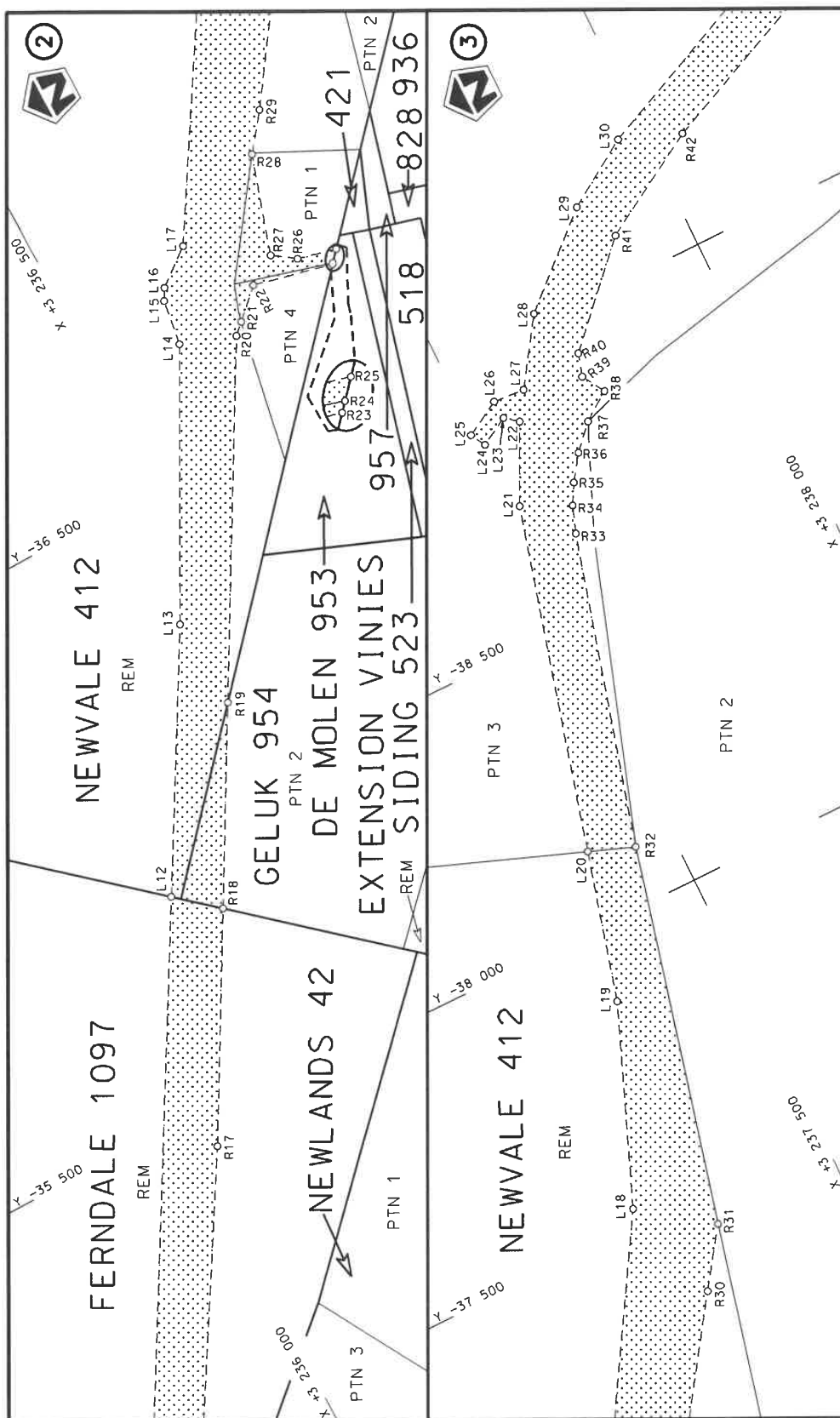
**A. VERKLARING WYSIGING VAN NASIONALE PAAIE N8 SEKSIE 12 EN N8 SEKSIE 13 EN
VERKLARING VAN DIE VERLENGING VAN NASIONALE PAD N8 SEKSIE 12 – DISTRIKT
VAN THABO MOFUTSANYANE, IN DIE PROVINSIE VAN DIE VRYSTAAT.**


- i) Kragtens Artikel 40(1)(a) van die Wet op die Suid-Afrikaanse Nasionale Padagentskap Beperk en op Nasionale Paaie, Wet 1998 (Wet No. 7 van 1998), verklaar ek hiermee die seksie van pad beginnende vanaf die interseksie met die bestaande Nasionale Pad N8 Seksie 12 en Pad R26 Seksie 5 tot by die interseksie met die bestaande Nasionale Pad N8 Seksie 13, as 'n Nasionale Pad.
- ii) Kragtens Artikel 40(1)(b) van die Wet op die Suid-Afrikaanse Nasionale Padagentskap Beperk en op Nasionale Paaie, 1998 (Wet No.7 van 1998), wysig ek hiermee (I) Verklaring No. 901 van 2021 die seksie van pad vanaf die algemene grense tussen die plase Damplaats 55 en Newlands 42 tot by die interseksie met Pad R26 Section 5, naby punte L243 en R239 op vel 14 van Plan No. P1142/19, (II) Verklaring No. 900 van 2021 die seksie van pad vanaf punte L43 en R39 op vel 2 van Plan No. P1146/19 tot op sy einde by die Lesotho Nasionale Grens, deur alle velle van hulle respektiewelike Planne te vervang met meegaande velle 1 tot 9 van Plan No. P1234/23.

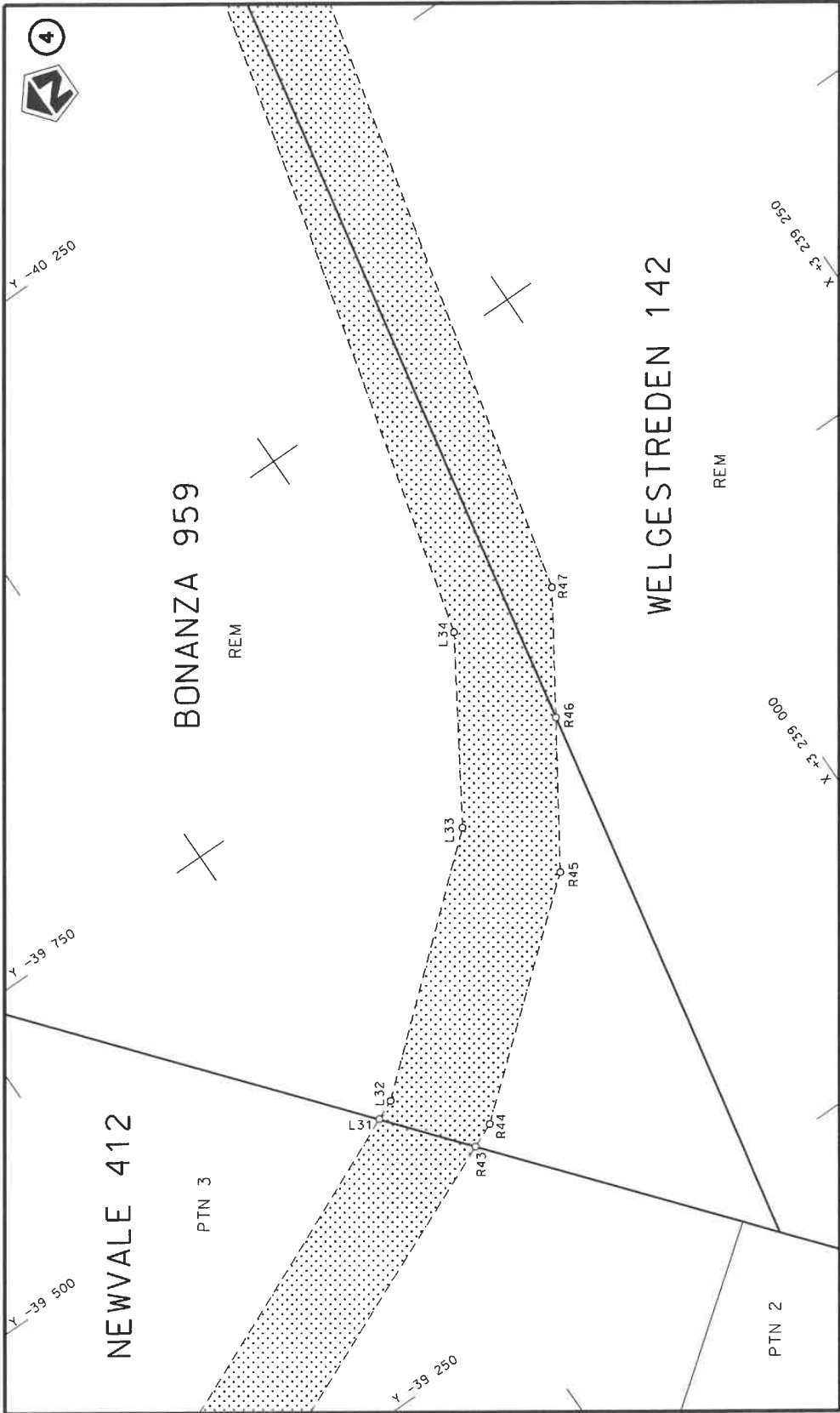
[Nasionale Pad N8 Seksie 12: R26 Interseksie – Lesotho Nasionale Grens]**MINISTER VAN VERVOER**

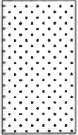


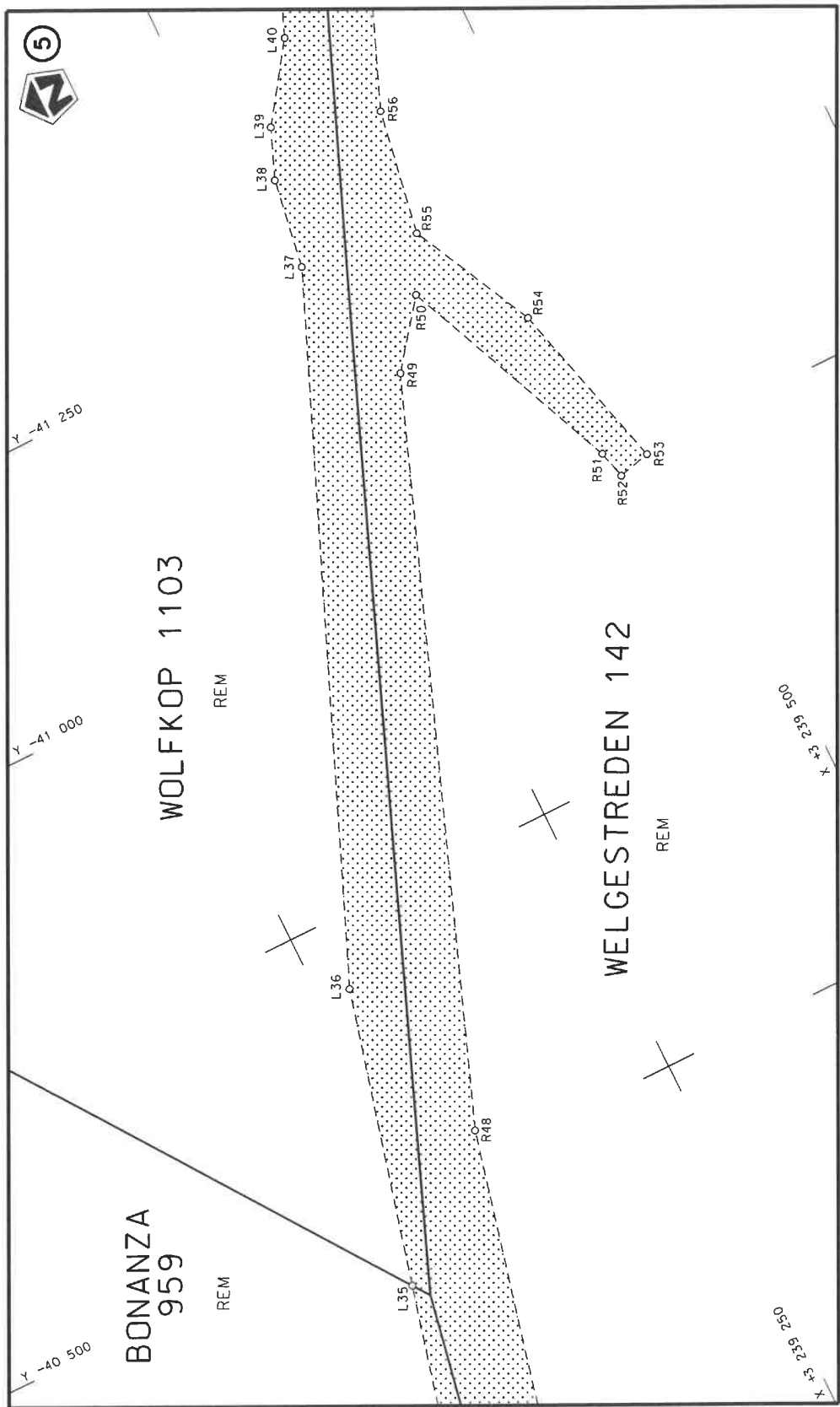
Die Suid Afrikaanse Nasionale Padagentskap MSB Bpk The South African National Roads Agency SOC Ltd		Die figuur getoon The figure shown		stel die padreserwe voor van 'n gedeelte represents the road reserve of a portion van Nasionale Roete N8 of National Route		Vel Sheet	1 of	9
						Plan	P1234/23	
							12	



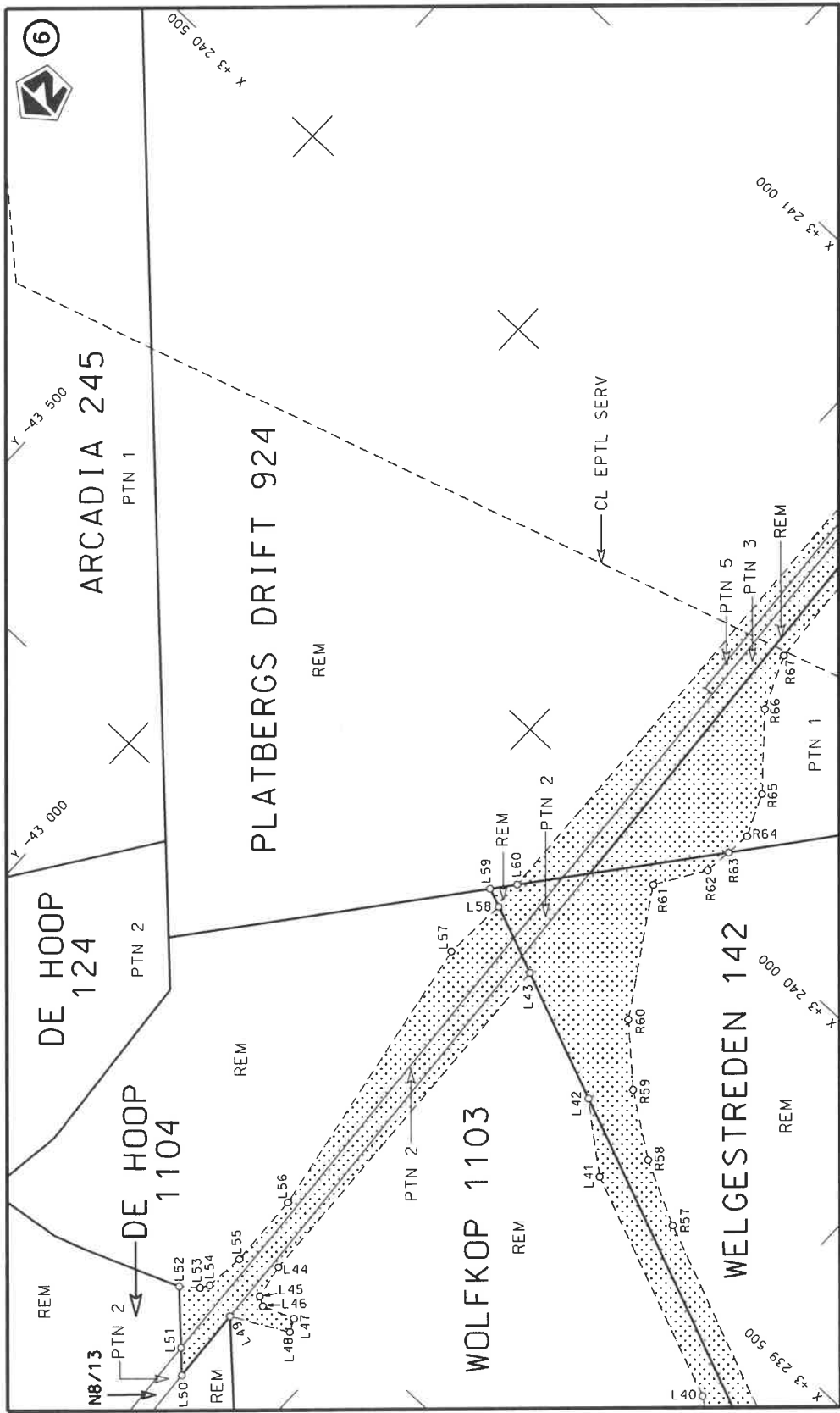
Die Suid Afrikaanse Nasionale Padagentskap MSB Bpk	Die figuur getoon		stel die padreserwe voor van 'n gedeelte represents the road reserve of a portion van Nasionale Roete N8 of National Route	Vel Sheet 2 of 9
The South African National Roads Agency SOC Ltd	The figure shown			12




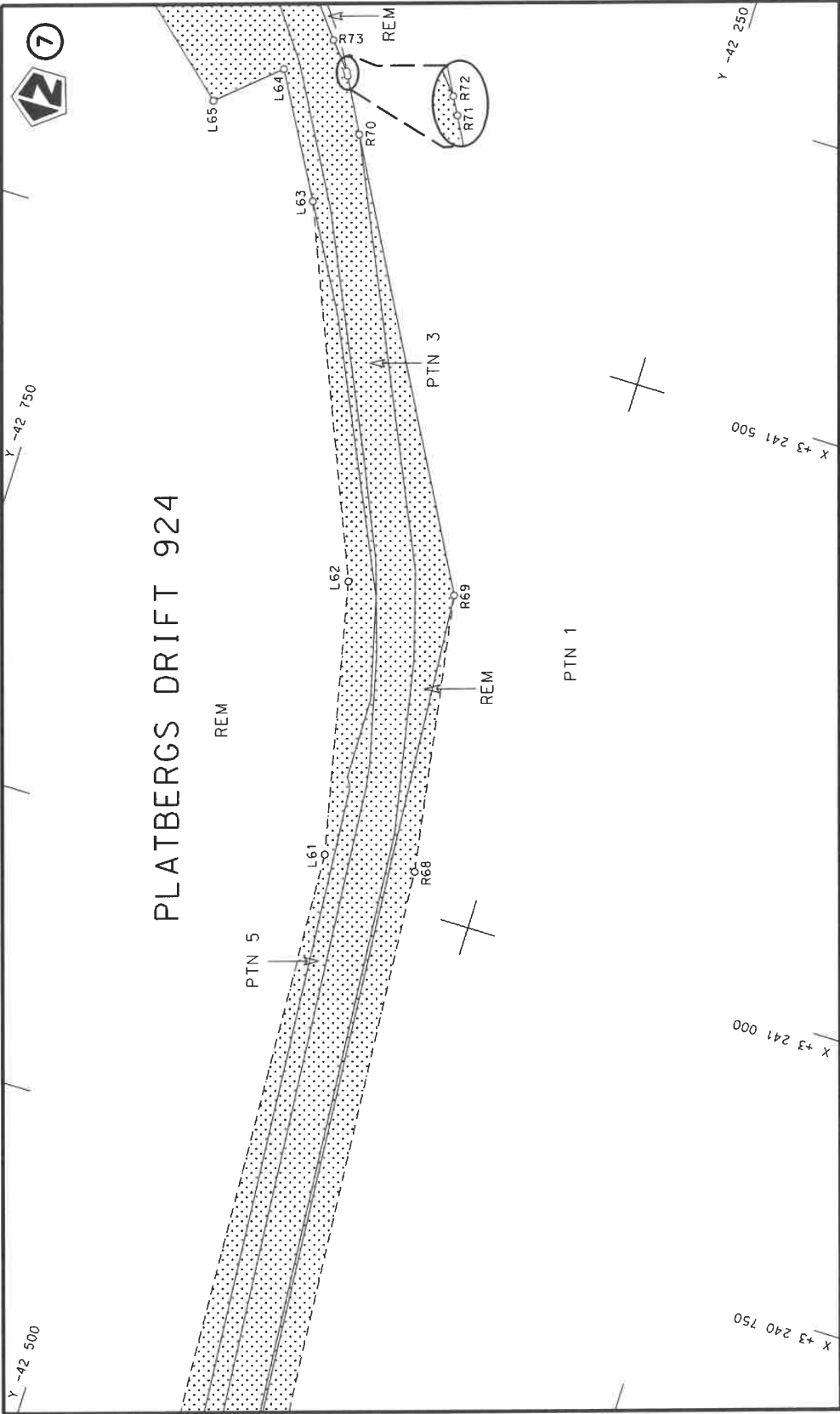
Die Suid Afrikaanse Nasionale Padagentskap MSB Bpk The South African National Roads Agency SOC Ltd		Die figuur getoon The figure shown				stel die padreserwe voor van 'n gedeelte represents the road reserve of a portion van Nasionale Roete N8 of National Route		12		Seksie Section		Plan P1234/23		Vel Sheet 3 of 9	
---	--	---------------------------------------	--	---	--	---	--	----	--	-------------------	--	---------------	--	------------------	--




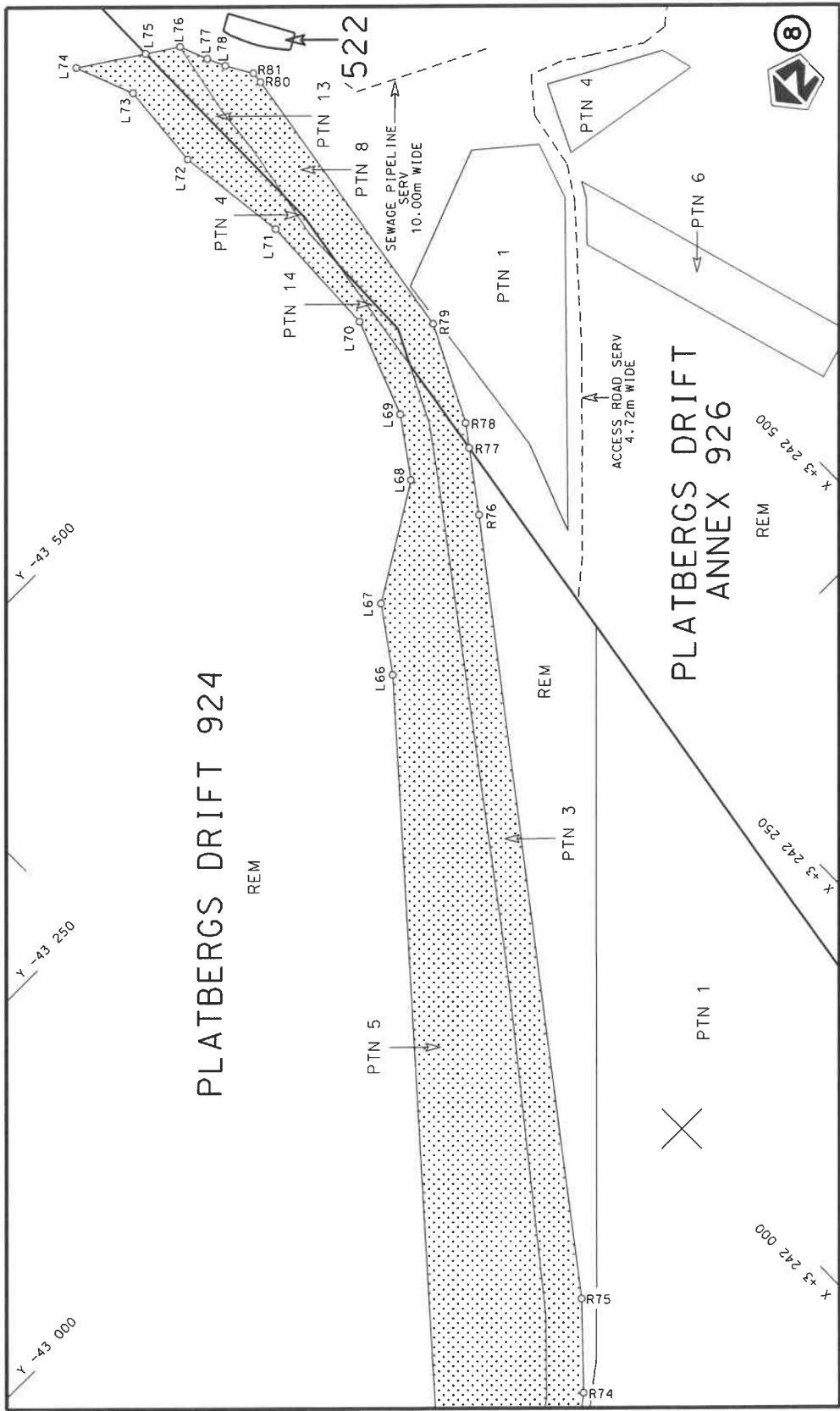
Die Suid Afrikaanse Nasionale Padagentskap MSB Bpk The South African National Roads Agency SOC Ltd	Die figuur getoon The figure shown		steil die padreserwe voor van 'n gedeelte represents the road reserve of a portion van Nasionale Roete N8 of National Route	12	Plan P1234/23	Vel Sheet 4 of 9
---	---------------------------------------	--	--	----	---------------	------------------



Die Suid Afrikaanse Nasionale Padagentskap MSB Bpk The South African National Roads Agency SOC Ltd	Die figuur getoon The figure shown		steldie padreserwe voor van 'n gedeelte represents the road reserve of a portion van Nasionale Roete of National Route	12	Vel Sheet	5 of	9
					Plan	P1234/23	



Die Suid Afrikaanse Nasionale Padagentskap MSB Bpk The South African National Roads Agency SOC Ltd		Die figuur getoon The figure shown		steeldie padreserwe voor van 'n gedeelte represents the road reserve of a portion van Nasionale Roete N8 of National Route	12	Vel Sheet 6 of 9
						Plan P1234/23



Die Suid Afrikaanse Nasionale Padagentskap MSB Bpk The South African National Roads Agency SOC Ltd	Die figuur getoon The figure shown	stel die padreserwe voor van 'n gedeelte represents the road reserve of a portion van Nasionale Roete N8 of National Route	Vel Sheet 7 of 9
		12 Seksie Section	Plan P1234/23

PADRESERVE KOÖRDINATE / ROAD RESERVE CO-ORDINATES									
LINKERKANT/LEFT HAND SIDE					REGTERKANT/RIGHT HAND SIDE				
	Y	X	WG 27°			Y	X		
L1	-32 800.69	3 234 896.61		R1	-32 747.04	3 234 972.76			
L2	-33 511.48	3 235 087.38		R2	-33 568.54	3 235 214.51			
L3	-33 624.92	3 235 088.05		R3	-33 604.93	3 235 241.01			
L4	-33 769.15	3 235 039.88		R4	-33 602.88	3 235 271.55			
L5	-33 860.62	3 235 050.35		R5	-33 578.83	3 235 331.39			
L6	-33 949.80	3 235 124.83		R6	-33 326.17	3 235 660.46			
L7	-33 963.58	3 235 183.24		R7	-33 349.88	3 235 680.83			
L8	-33 956.68	3 235 222.14		R8	-33 638.06	3 235 382.26			
L9	-34 412.50	3 235 357.00		R9	-33 735.81	3 235 418.79			
L10	-34 632.10	3 235 461.61		R10	-33 812.97	3 235 397.32			
L11	-34 701.24	3 235 509.80		R11	-33 920.85	3 235 344.58			
L12	-35 856.06	3 236 178.45		R12	-33 998.49	3 235 334.75			
L13	-36 271.60	3 236 419.06		R13	-34 303.72	3 235 431.97			
L14	-36 706.47	3 236 650.47		R14	-34 564.63	3 235 539.58			
L15	-36 786.13	3 236 662.89		R15	-34 732.87	3 235 622.80			
L16	-36 806.26	3 236 674.26		R16	-34 787.28	3 235 654.30			
L17	-36 855.47	3 236 737.47		R17	-35 431.25	3 236 042.59			
L18	-37 528.80	3 237 147.76		R18	-35 794.97	3 236 248.67			
L19	-37 868.90	3 237 284.31		R19	-36 109.99	3 236 427.16			
L20	-38 128.00	3 237 354.08		R20	-36 671.80	3 236 745.47			
L21	-38 726.96	3 237 515.39		R21	-36 689.27	3 236 763.87			
L22	-38 860.59	3 237 581.24		R22	-36 735.90	3 236 813.00			
L23	-38 878.97	3 237 558.35		R23	-36 702.03	3 236 952.78			
L24	-38 850.91	3 237 508.50		R24	-36 704.02	3 236 954.55			
L25	-38 877.06	3 237 493.79		R25	-36 722.61	3 236 971.24			
L26	-38 912.11	3 237 556.19		R26	-36 740.10	3 236 903.81			
L27	-38 907.57	3 237 612.01		R27	-36 768.09	3 236 865.25			
L28	-39 019.22	3 237 687.48		R28	-36 939.95	3 236 919.16			
L29	-39 153.23	3 237 837.98		R29	-37 003.19	3 236 968.11			
L30	-39 227.58	3 237 955.59		R30	-37 340.51	3 237 200.89			
L31	-39 469.57	3 238 498.65		R31	-37 438.12	3 237 269.03			
L32	-39 477.44	3 238 516.32		R32	-38 097.72	3 237 433.34			
L33	-39 639.57	3 238 704.73		R33	-38 639.36	3 237 583.12			
L34	-39 785.57	3 238 796.03		R34	-38 686.27	3 237 600.00			
L35	-40 426.53	3 238 960.70		R35	-38 721.60	3 237 619.85			
L36	-40 687.53	3 239 027.75		R36	-38 764.75	3 237 650.13			
L37	-41 281.09	3 239 272.73		R37	-38 806.42	3 237 689.34			
L38	-41 360.67	3 239 285.12		R38	-38 841.76	3 237 738.98			
L39	-41 404.53	3 239 302.69		R39	-38 881.88	3 237 715.22			
L40	-41 470.13	3 239 348.48		R40	-38 921.65	3 237 727.14			
L41	-41 868.25	3 239 508.00		R41	-39 077.98	3 237 876.93			
L42	-41 977.64	3 239 594.93		R42	-39 186.72	3 238 061.14			
L43	-42 205.65	3 239 686.29		R43	-39 401.18	3 238 554.76			
L44	-42 173.83	3 239 004.66		R44	-39 410.76	3 238 576.80			
L45	-42 160.99	3 238 944.07		R45	-39 558.27	3 238 753.29			
L46	-42 150.69	3 238 938.01		R46	-39 672.43	3 238 826.89			
L47	-42 091.51	3 238 956.83		R47	-39 769.05	3 238 889.19			
L48	-42 080.44	3 238 934.57		R48	-40 525.64	3 239 070.94			
L49	-42 175.87	3 238 882.58		R49	-41 157.60	3 239 309.44			
L50	-42 165.93	3 238 748.57		R50	-41 213.89	3 239 352.29			
L51	-42 200.41	3 238 783.13		R51	-41 013.86	3 239 437.60			
					Vel Sheet	8	Van of	9	P1234/23

PADRESERWE KOÖRDINATE / ROAD RESERVE CO-ORDINATES						
LINKERKANT/LEFT HAND SIDE				REGTERKANT/RIGHT HAND SIDE		
	Y	X	WG 27°		Y	X
L52	-42 277.37	3 238 860.30		R52	-40 988.91	3 239 444.16
L53	-42 248.71	3 238 884.21		R53	-40 995.90	3 239 472.96
L54	-42 239.49	3 238 899.35		R54	-41 151.59	3 239 431.59
L55	-42 233.09	3 238 968.08		R55	-41 262.66	3 239 376.94
L56	-42 239.98	3 239 099.40		R56	-41 373.92	3 239 396.11
L57	-42 332.47	3 239 619.87		R57	-41 715.36	3 239 532.95
L58	-42 326.15	3 239 733.83		R58	-41 826.44	3 239 587.92
L59	-42 359.11	3 239 746.65		R59	-41 930.95	3 239 660.02
L60	-42 329.07	3 239 784.69		R60	-42 022.30	3 239 744.93
L61	-42 388.37	3 241 024.74		R61	-42 153.71	3 239 948.24
L62	-42 439.86	3 241 260.35		R62	-42 100.93	3 240 032.74
L63	-42 569.89	3 241 570.25		R63	-42 095.60	3 240 080.50
L64	-42 628.99	3 241 673.80		R64	-42 090.72	3 240 124.27
L65	-42 679.89	3 241 629.03		R65	-42 122.82	3 240 196.65
L66	-43 215.19	3 242 100.88		R66	-42 222.09	3 240 309.23
L67	-43 267.33	3 242 137.98		R67	-42 262.51	3 240 401.01
L68	-43 326.43	3 242 233.20		R68	-42 308.79	3 241 033.39
L69	-43 374.47	3 242 267.30		R69	-42 348.51	3 241 275.52
L70	-43 457.89	3 242 299.37		R70	-42 548.55	3 241 638.09
L71	-43 568.49	3 242 304.30		R71	-42 573.54	3 241 684.34
L72	-43 666.60	3 242 293.09		R72	-42 575.64	3 241 688.14
L73	-43 742.20	3 242 300.14		R73	-42 594.94	3 241 710.67
L74	-43 793.25	3 242 280.41		R74	-42 644.79	3 241 773.41
L75	-43 759.06	3 242 332.50		R75	-42 705.20	3 241 830.72
L76	-43 742.26	3 242 358.11		R76	-43 262.10	3 242 254.09
L77	-43 717.81	3 242 367.43		R77	-43 310.41	3 242 289.61
L78	-43 702.54	3 242 374.37		R78	-43 328.28	3 242 302.75
				R79	-43 411.00	3 242 344.10
				R80	-43 670.50	3 242 386.14
				R81	-43 680.39	3 242 387.09

Printed by and obtainable from the Government Printer, Bosman Street, Private Bag X85, Pretoria, 0001
Contact Centre Tel: 012-748 6200. eMail: info.egazette@gpw.gov.za
Publications: Tel: (012) 748 6053, 748 6061, 748 6065